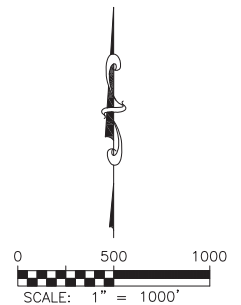
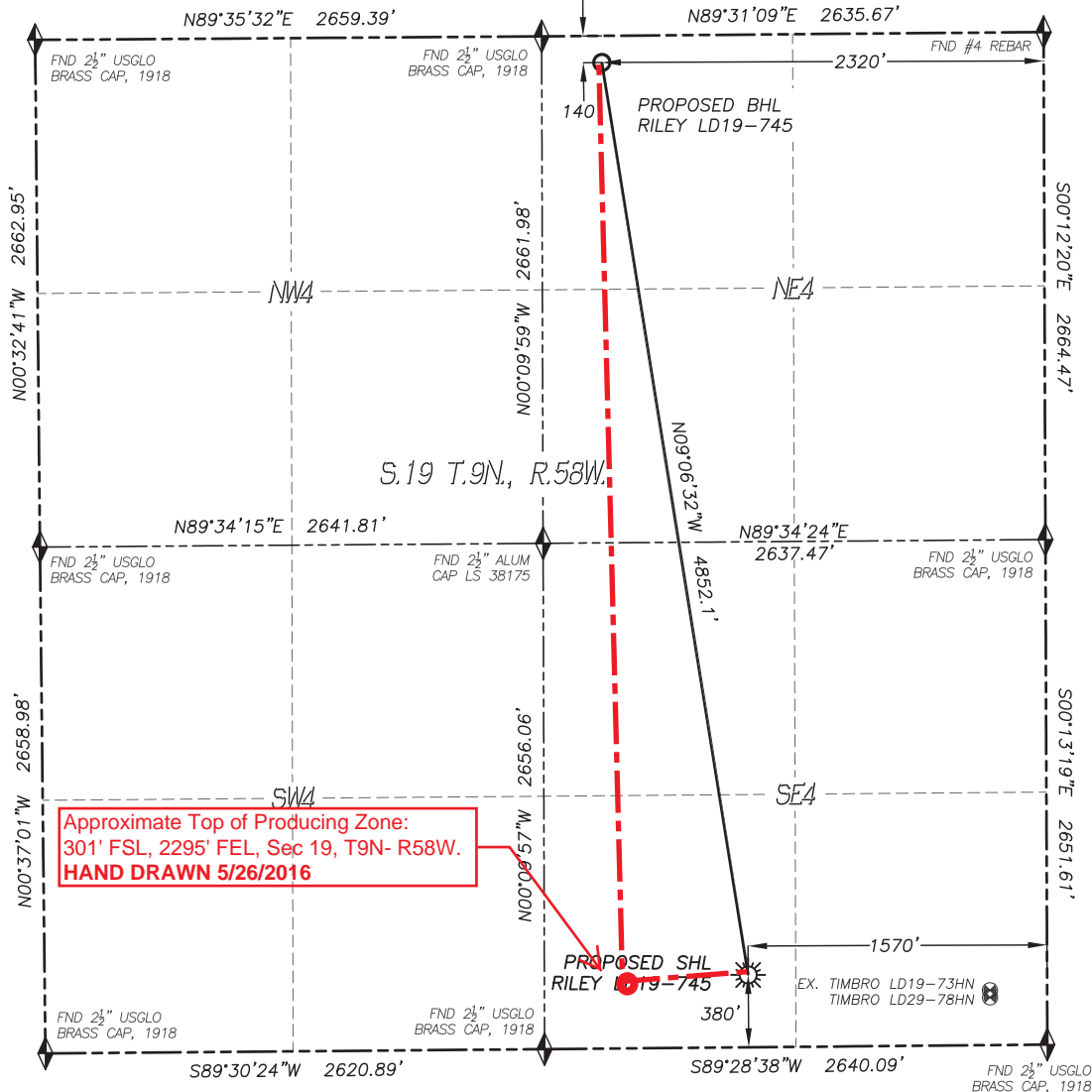


DALEY LAND SURVEYING, INC. 970.302.4159
WELL LOCATION CERTIFICATE
RILEY LD19-745

SECTION: 19
 TOWNSHIP: 9N
 RANGE: 58W



LEGEND

- ◆ FOUND MONUMENT AS DESCRIBED
- ⊙ PROPOSED WELL
- ⊙ EXISTING WELL
- BOTTOM HOLE
- ⊙ ABANDONED WELL
- ◆ CALCULATED POSITION

IN ACCORDANCE WITH A REQUEST FROM CODY BALL OF NOBLE ENERGY INC., DALEY LAND SURVEYING, INC. HAS DETERMINED THE SURFACE LOCATION OF THE RILEY LD19-745 WELL TO BE 380' FSL, 1570' FEL, AND THE BOTTOM HOLE LOCATION TO BE 140' FNL, 2320' FEL, AS MEASURED AT NINETY (90) DEGREES FROM THE SECTION LINES OF SECTION 19, TOWNSHIP 9 NORTH, RANGE 58 WEST, OF THE 6TH PRINCIPAL MERIDIAN, WELD COUNTY, COLORADO.

I HEREBY STATE THAT THIS WELL LOCATION CERTIFICATE WAS PREPARED BY ME OR UNDER MY DIRECT SUPERVISION, THAT THE WORK WAS COMPLETED ON 1/12/2016 FOR AND ON BEHALF OF NOBLE ENERGY, INC., AND THAT THIS MAP DOES NOT REPRESENT A BOUNDARY SURVEY, IT IS NOT A LAND SURVEY PLAT OR AN IMPROVEMENT SURVEY PLAT AND IT IS NOT TO BE RELIED UPON FOR THE ESTABLISHMENT OF FENCE, BUILDING OR OTHER FUTURE IMPROVEMENT LINES.

NOTES:

- 1) BEARINGS FOR THIS MAP ARE ASSUMED AND BASED UPON GPS OBSERVATIONS MADE BETWEEN MONUMENTS LOCATED AT THE SOUTHWEST CORNER AND SOUTH QUARTER CORNER OF SECTION 19, T.9N., R.58W.
- 2) HORIZONTAL DATUM IS NAD83.
- 3) VERTICAL DATUM IS NAVD88 AND ORIGINATES FROM THE LOCAL C.O.R.S. NETWORK, UTILIZING THE GEOID12A MODEL.
- 4) SEE LOCATION DRAWING FOR VISIBLE IMPROVEMENTS WITHIN 500' OF PROPOSED DISTURBED AREA.
- 5) SURFACE USE: RANGE LAND.
- 6) INST. OPERATOR: TREVOR DALEY.
- 7) NEAREST WELL: 1272'± E. - TIMBRO LD19-73HN

NEAREST CULTURAL ITEMS:

BUILDING: 5280'±
 BUILDING UNIT: 5280'±
 HIGH OCC. BLD. UNIT: 5280'±
 DES. OUTSIDE ACTIVITY AREA: 5280'±
 PUBLIC ROAD: 5280'±
 ABOVE GROUND UTILITY: 5280'±
 RAILROAD: 5280'±
 PROPERTY LINE: 380'± S

NAD 83 LATITUDE AND LONGITUDE

SURFACE LOCATION:		BOTTOM HOLE:	
LATITUDE:	N40.73025°	LATITUDE:	N40.74340°
LONGITUDE:	W103.90328°	LONGITUDE:	W103.90604°
ELEV:	4820'		
PDOP:	1.2		
QTR/QTR:	SW4/SE4		



FOR AND ON BEHALF OF
 DALEY LAND SURVEYING INC.,
 Robert Daley, PLS 35597

SHEET 1 OF 1

Drawing Date: 5/12/16