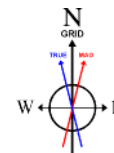


NOBLE ENERGY, INC

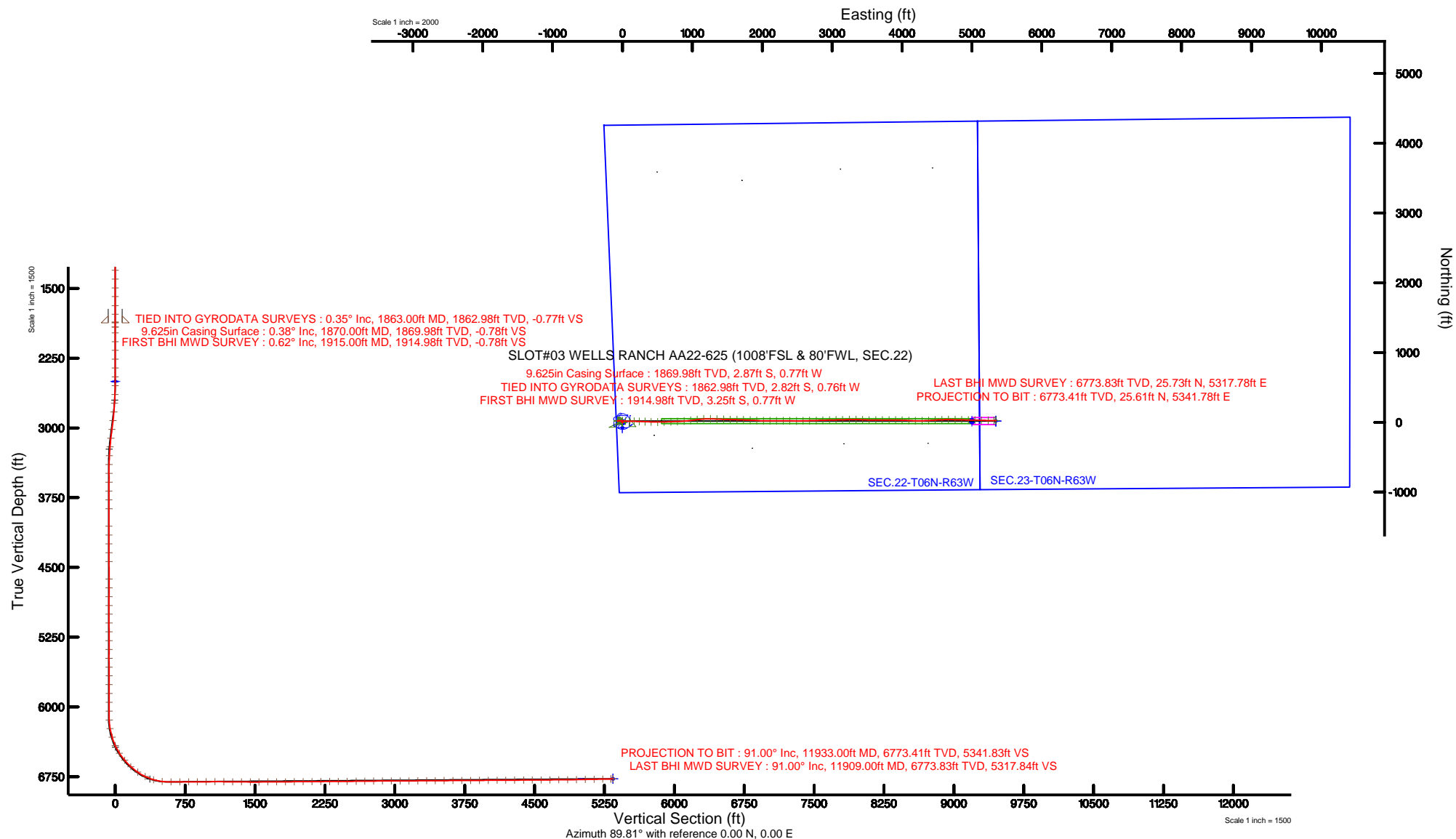
Location: COLORADO Slot: SLOT#03 WELLS RANCH AA22-625 (1008'FSL & 80'FWL, SEC.22)
Field: WELD COUNTY (NOBLE NAD 83 GRID) Well: WELLS RANCH AA22-625
Facility: SEC.22-T06N-R63W Wellbore: WELLS RANCH AA22-625 PWB



BGGM (1945.0 to 2017.0) Dip: 67.06° Field: 52616.9 nT
Magnetic North is 8.29 degrees East of True North (at 3/31/16)
Grid North is 0.69 degrees East of True North
To correct azimuth from True to Grid subtract 0.69 degrees
To correct azimuth from Magnetic to Grid add 7.60 degrees

Plot reference wellpath is WELLS RANCH AA22-625 (REV-A.D) PWP	Grid System: NAD83 / Lambert Colorado SP, Northern Zone (501), US feet
True vertical depths are referenced to H&P 321 (RKB)	* = Wellpath was transformed from a different geodetic datum
Measured depths are referenced to H&P 321 (RKB)	North Reference: Grid north
H&P 321 (RKB) to Mean Sea Level: 4775 feet	Scale: True distance
Mean Sea Level to Mud line (At Slot: SLOT#03 WELLS RANCH AA22-625 (1008'FSL & 80'FWL, SEC.22)): 0 feet	Depths are in feet
Coordinates are in feet referenced to Slot	Created by: cookdanm on 2016-05-24
	Database: WA_DEN_Server_Defn

API: 05-123-42269



REFERENCE WELLPATH IDENTIFICATION			
Operator	NOBLE ENERGY, INC	Slot	SLOT#03 WELLS RANCH AA22-625 (1008'FSL & 80'FWL, SEC.22)
Area	COLORADO	Well	WELLS RANCH AA22-625
Field	WELD COUNTY (NOBLE NAD 83 GRID)	Wellbore	WELLS RANCH AA22-625 AWB
Facility	SEC.22-T06N-R63W		

REPORT SETUP INFORMATION			
Projection System	NAD83 / Lambert Colorado SP, Northern Zone (501), US feet	Software System	WellArchitect® 5.0
North Reference	Grid	User	Cookdanm
Scale	0.999964	Report Generated	5/24/16 at 5:45:27 PM
Convergence at slot	0.70° East	Database/Source file	WA_DEN_Denver_Defn/WELLS_RANCH_AA22-625_AWP.xml

WELLPATH LOCATION						
	Local coordinates		Grid coordinates		Geographic coordinates	
	North[ft]	East[ft]	Easting[US ft]	Northing[US ft]	Latitude	Longitude
Slot Location	76.53	1.86	3297159.01	1414991.22	40°28'03.504"N	104°25'55.020"W
Facility Reference Pt			3297157.15	1414914.69	40°28'02.748"N	104°25'55.056"W
Field Reference Pt			3000000.00	4454105.15	48°46'34.315"N	105°30'00.000"W

WELLPATH DATUM			
Calculation method	Minimum curvature	H&P 321 (RKB) to Facility Vertical Datum	4775.00ft
Horizontal Reference Pt	Slot	H&P 321 (RKB) to Mean Sea Level	4775.00ft
Vertical Reference Pt	H&P 321 (RKB)	H&P 321 (RKB) to Mud Line at Slot (SLOT#03 WELLS RANCH AA22-625 (1008'FSL & 80'FWL, SEC.22))	4775.00ft
MD Reference Pt	H&P 321 (RKB)	Section Origin	N 0.00, E 0.00 ft
Field Vertical Reference	Mean Sea Level	Section Azimuth	89.81°

REFERENCE WELLPATH IDENTIFICATION

Operator	NOBLE ENERGY, INC	Slot	SLOT#03 WELLS RANCH AA22-625 (1008'FSL & 80'FWL, SEC.22)
Area	COLORADO	Well	WELLS RANCH AA22-625
Field	WELD COUNTY (NOBLE NAD 83 GRID)	Wellbore	WELLS RANCH AA22-625 AWB
Facility	SEC.22-T06N-R63W		

WELLPATH DATA (107 stations)

MD [ft]	Inclination [°]	Azimuth [°]	TVD [ft]	Vert Sect [ft]	North [ft]	East [ft]	Latitude	Longitude	DLS [°/100ft]	Comments
1863.00	0.350	203.100	1862.98	-0.77	-2.82	-0.76	40°28'03.476"N	104°25'55.030"W	0.18	TIED INTO GYRODATA SURVEYS
1915.00	0.620	169.970	1914.98	-0.78	-3.25	-0.77	40°28'03.472"N	104°25'55.030"W	0.73	FIRST BHI MWD SURVEY
1978.00	0.440	93.190	1977.98	-0.48	-3.60	-0.47	40°28'03.469"N	104°25'55.027"W	1.07	
2073.00	0.680	307.080	2072.98	-0.57	-3.28	-0.56	40°28'03.472"N	104°25'55.028"W	1.13	
2167.00	0.100	177.540	2166.98	-1.01	-3.02	-1.00	40°28'03.474"N	104°25'55.033"W	0.80	
2262.00	0.330	292.630	2261.98	-1.26	-3.00	-1.25	40°28'03.475"N	104°25'55.037"W	0.40	
2357.00	0.360	109.810	2356.97	-1.23	-3.00	-1.22	40°28'03.475"N	104°25'55.036"W	0.73	
2451.00	0.240	170.830	2450.97	-0.92	-3.29	-0.91	40°28'03.472"N	104°25'55.032"W	0.34	
2546.00	1.030	300.100	2545.97	-1.63	-3.06	-1.62	40°28'03.474"N	104°25'55.041"W	1.26	
2640.00	3.030	315.900	2639.91	-4.08	-0.85	-4.08	40°28'03.496"N	104°25'55.073"W	2.19	
2735.00	4.890	320.030	2734.68	-8.41	4.06	-8.43	40°28'03.545"N	104°25'55.128"W	1.98	
2830.00	7.410	317.810	2829.12	-15.10	11.70	-15.14	40°28'03.621"N	104°25'55.214"W	2.66	
2924.00	8.030	305.520	2922.28	-24.49	20.01	-24.56	40°28'03.705"N	104°25'55.335"W	1.87	
3019.00	7.650	276.540	3016.42	-36.16	24.58	-36.24	40°28'03.751"N	104°25'55.485"W	4.14	
3114.00	6.350	254.940	3110.73	-47.52	23.94	-47.60	40°28'03.746"N	104°25'55.632"W	3.07	
3208.00	5.020	254.150	3204.27	-56.51	21.46	-56.58	40°28'03.723"N	104°25'55.749"W	1.42	
3303.00	3.040	256.930	3299.03	-62.97	19.76	-63.03	40°28'03.707"N	104°25'55.832"W	2.09	
3398.00	2.160	239.030	3393.93	-66.96	18.27	-67.02	40°28'03.692"N	104°25'55.884"W	1.25	
3493.00	1.180	101.970	3488.91	-67.54	17.14	-67.60	40°28'03.681"N	104°25'55.892"W	3.29	
3587.00	0.990	277.730	3582.90	-67.40	17.05	-67.46	40°28'03.681"N	104°25'55.890"W	2.31	
3682.00	0.300	353.480	3677.90	-68.24	17.41	-68.30	40°28'03.684"N	104°25'55.901"W	1.01	
3777.00	0.830	140.170	3772.89	-67.83	17.13	-67.89	40°28'03.681"N	104°25'55.896"W	1.15	
3872.00	1.290	353.930	3867.89	-67.50	17.66	-67.56	40°28'03.687"N	104°25'55.891"W	2.14	
4061.00	0.890	340.910	4056.85	-68.19	21.17	-68.26	40°28'03.721"N	104°25'55.900"W	0.25	
4156.00	0.220	327.610	4151.85	-68.53	22.02	-68.60	40°28'03.730"N	104°25'55.904"W	0.71	
4250.00	0.740	47.780	4245.84	-68.17	22.58	-68.25	40°28'03.735"N	104°25'55.899"W	0.78	
4345.00	0.390	163.100	4340.84	-67.63	22.68	-67.70	40°28'03.736"N	104°25'55.892"W	1.02	
4440.00	0.190	57.330	4435.84	-67.40	22.46	-67.47	40°28'03.734"N	104°25'55.889"W	0.50	
4629.00	0.140	165.410	4624.84	-67.08	22.40	-67.15	40°28'03.733"N	104°25'55.885"W	0.14	
4724.00	0.180	341.670	4719.84	-67.10	22.43	-67.17	40°28'03.734"N	104°25'55.886"W	0.34	

REFERENCE WELLPATH IDENTIFICATION

Operator	NOBLE ENERGY, INC	Slot	SLOT#03 WELLS RANCH AA22-625 (1008'FSL & 80'FWL, SEC.22)
Area	COLORADO	Well	WELLS RANCH AA22-625
Field	WELD COUNTY (NOBLE NAD 83 GRID)	Wellbore	WELLS RANCH AA22-625 AWB
Facility	SEC.22-T06N-R63W		

WELLPATH DATA (107 stations)

MD [ft]	Inclination [°]	Azimuth [°]	TVD [ft]	Vert Sect [ft]	North [ft]	East [ft]	Latitude	Longitude	DLS [°/100ft]	Comments
4818.00	0.240	273.980	4813.84	-67.34	22.58	-67.41	40°28'03.735"N	104°25'55.889"W	0.25	
4913.00	0.090	51.410	4908.84	-67.48	22.65	-67.55	40°28'03.736"N	104°25'55.890"W	0.33	
5007.00	0.140	2.090	5002.84	-67.42	22.81	-67.49	40°28'03.737"N	104°25'55.890"W	0.11	
5102.00	0.110	41.960	5097.84	-67.35	22.99	-67.43	40°28'03.739"N	104°25'55.889"W	0.09	
5197.00	0.140	97.790	5192.84	-67.17	23.04	-67.25	40°28'03.740"N	104°25'55.886"W	0.13	
5291.00	0.030	288.380	5286.84	-67.08	23.03	-67.16	40°28'03.740"N	104°25'55.885"W	0.18	
5386.00	0.100	273.840	5381.84	-67.19	23.05	-67.27	40°28'03.740"N	104°25'55.887"W	0.08	
5481.00	0.310	186.020	5476.84	-67.30	22.80	-67.38	40°28'03.737"N	104°25'55.888"W	0.34	
5576.00	0.410	108.660	5571.84	-67.01	22.43	-67.08	40°28'03.734"N	104°25'55.884"W	0.48	
5670.00	0.230	270.470	5665.84	-66.88	22.33	-66.95	40°28'03.733"N	104°25'55.883"W	0.67	
5765.00	0.140	190.720	5760.84	-67.09	22.21	-67.16	40°28'03.731"N	104°25'55.885"W	0.26	
5860.00	0.330	125.680	5855.84	-66.89	21.94	-66.96	40°28'03.729"N	104°25'55.883"W	0.31	
5954.00	0.090	169.050	5949.83	-66.66	21.71	-66.73	40°28'03.726"N	104°25'55.880"W	0.29	
6049.00	0.160	128.470	6044.83	-66.54	21.55	-66.61	40°28'03.725"N	104°25'55.878"W	0.11	
6144.00	1.960	97.630	6139.81	-64.83	21.26	-64.90	40°28'03.722"N	104°25'55.856"W	1.92	
6238.00	9.850	84.280	6233.24	-55.21	21.85	-55.29	40°28'03.726"N	104°25'55.732"W	8.46	
6333.00	16.930	89.360	6325.61	-33.27	22.81	-33.34	40°28'03.733"N	104°25'55.448"W	7.55	
6428.00	24.110	94.660	6414.53	-0.05	21.39	-0.12	40°28'03.715"N	104°25'55.018"W	7.80	
6522.00	32.950	95.040	6497.03	44.62	17.57	44.56	40°28'03.672"N	104°25'54.441"W	9.41	
6617.00	40.340	89.690	6573.22	101.19	15.47	101.14	40°28'03.645"N	104°25'53.709"W	8.47	
6712.00	47.050	91.730	6641.87	166.76	14.58	166.72	40°28'03.628"N	104°25'52.861"W	7.22	
6807.00	55.630	91.450	6701.16	240.84	12.54	240.80	40°28'03.599"N	104°25'51.903"W	9.03	
6901.00	64.460	92.340	6748.05	322.15	9.82	322.12	40°28'03.563"N	104°25'50.851"W	9.43	
6996.00	73.820	92.440	6781.84	410.73	6.12	410.72	40°28'03.516"N	104°25'49.705"W	9.85	
7090.00	83.350	90.220	6800.43	502.73	4.01	502.72	40°28'03.484"N	104°25'48.515"W	10.40	
7185.00	90.020	88.340	6805.92	597.51	5.21	597.50	40°28'03.484"N	104°25'47.289"W	7.29	
7280.00	90.180	87.150	6805.75	692.45	8.95	692.42	40°28'03.510"N	104°25'46.060"W	1.26	
7375.00	90.210	88.520	6805.43	787.39	12.54	787.35	40°28'03.534"N	104°25'44.832"W	1.44	
7469.00	90.450	85.500	6804.89	881.26	17.44	881.21	40°28'03.571"N	104°25'43.617"W	3.22	
7564.00	90.360	83.460	6804.22	975.84	26.58	975.76	40°28'03.650"N	104°25'42.392"W	2.15	

REFERENCE WELLPATH IDENTIFICATION			
Operator	NOBLE ENERGY, INC	Slot	SLOT#03 WELLS RANCH AA22-625 (1008'FSL & 80'FWL, SEC.22)
Area	COLORADO	Well	WELLS RANCH AA22-625
Field	WELD COUNTY (NOBLE NAD 83 GRID)	Wellbore	WELLS RANCH AA22-625 AWB
Facility	SEC.22-T06N-R63W		

WELLPATH DATA (107 stations)										
MD [ft]	Inclination [°]	Azimuth [°]	TVD [ft]	Vert Sect [ft]	North [ft]	East [ft]	Latitude	Longitude	DLS [°/100ft]	Comments
7659.00	90.510	82.520	6803.50	1070.17	38.17	1070.05	40°28'03.754"N	104°25'41.170"W	1.00	
7753.00	88.820	85.990	6804.05	1163.71	47.58	1163.56	40°28'03.835"N	104°25'39.959"W	4.11	
7848.00	89.680	91.840	6805.29	1258.64	49.37	1258.49	40°28'03.842"N	104°25'38.731"W	6.22	
7943.00	89.580	92.470	6805.90	1353.56	45.80	1353.42	40°28'03.795"N	104°25'37.503"W	0.67	
8038.00	89.650	91.590	6806.54	1448.49	42.44	1448.36	40°28'03.751"N	104°25'36.275"W	0.93	
8132.00	90.450	91.780	6806.46	1542.44	39.67	1542.31	40°28'03.712"N	104°25'35.060"W	0.87	
8227.00	90.350	91.680	6805.80	1637.38	36.81	1637.27	40°28'03.672"N	104°25'33.832"W	0.15	
8322.00	90.290	91.820	6805.27	1732.32	33.90	1732.22	40°28'03.632"N	104°25'32.604"W	0.16	
8416.00	90.600	92.790	6804.54	1826.23	30.12	1826.14	40°28'03.584"N	104°25'31.390"W	1.08	
8511.00	90.350	92.990	6803.75	1921.09	25.33	1921.02	40°28'03.525"N	104°25'30.163"W	0.34	
8606.00	90.480	91.230	6803.06	2016.01	21.84	2015.95	40°28'03.479"N	104°25'28.935"W	1.86	
8701.00	90.480	89.340	6802.27	2111.00	21.36	2110.94	40°28'03.463"N	104°25'27.707"W	1.99	
8795.00	90.260	90.030	6801.66	2205.00	21.88	2204.94	40°28'03.457"N	104°25'26.490"W	0.77	
8890.00	90.290	90.200	6801.20	2299.99	21.69	2299.93	40°28'03.444"N	104°25'25.261"W	0.18	
8984.00	90.510	90.810	6800.55	2393.98	20.86	2393.93	40°28'03.424"N	104°25'24.046"W	0.69	
9079.00	90.570	90.250	6799.65	2488.97	19.98	2488.92	40°28'03.404"N	104°25'22.817"W	0.59	
9174.00	90.690	88.440	6798.61	2583.96	21.07	2583.90	40°28'03.403"N	104°25'21.588"W	1.91	
9268.00	90.780	88.360	6797.40	2677.92	23.69	2677.86	40°28'03.418"N	104°25'20.372"W	0.13	
9363.00	90.230	88.400	6796.56	2772.89	26.38	2772.82	40°28'03.433"N	104°25'19.143"W	0.58	
9458.00	90.380	88.420	6796.06	2867.86	29.02	2867.78	40°28'03.448"N	104°25'17.914"W	0.16	
9552.00	90.320	88.730	6795.48	2961.83	31.35	2961.75	40°28'03.460"N	104°25'16.698"W	0.34	
9647.00	90.290	88.760	6794.98	3056.82	33.43	3056.72	40°28'03.469"N	104°25'15.469"W	0.04	
9741.00	90.350	88.500	6794.45	3150.80	35.68	3150.69	40°28'03.480"N	104°25'14.253"W	0.28	
9836.00	90.380	89.000	6793.85	3245.78	37.75	3245.67	40°28'03.489"N	104°25'13.024"W	0.53	
9931.00	90.540	90.650	6793.08	3340.77	38.04	3340.66	40°28'03.480"N	104°25'11.795"W	1.74	
10025.00	90.320	92.070	6792.38	3434.73	35.81	3434.63	40°28'03.447"N	104°25'10.579"W	1.53	
10120.00	90.440	91.530	6791.75	3529.67	32.83	3529.58	40°28'03.406"N	104°25'09.351"W	0.58	
10215.00	90.380	90.280	6791.07	3624.65	31.33	3624.57	40°28'03.380"N	104°25'08.123"W	1.32	
10309.00	90.350	89.860	6790.47	3718.65	31.21	3718.56	40°28'03.367"N	104°25'06.907"W	0.45	
10404.00	90.320	89.470	6789.91	3813.64	31.77	3813.56	40°28'03.361"N	104°25'05.678"W	0.41	

REFERENCE WELLPATH IDENTIFICATION			
Operator	NOBLE ENERGY, INC	Slot	SLOT#03 WELLS RANCH AA22-625 (1008'FSL & 80'FWL, SEC.22)
Area	COLORADO	Well	WELLS RANCH AA22-625
Field	WELD COUNTY (NOBLE NAD 83 GRID)	Wellbore	WELLS RANCH AA22-625 AWB
Facility	SEC.22-T06N-R63W		

WELLPATH DATA (107 stations)										
MD [ft]	Inclination [°]	Azimuth [°]	TVD [ft]	Vert Sect [ft]	North [ft]	East [ft]	Latitude	Longitude	DLS [°/100ft]	Comments
10499.00	90.480	90.580	6789.25	3908.64	31.73	3908.56	40°28'03.349"N	104°25'04.449"W	1.18	
10593.00	90.230	92.130	6788.67	4002.60	29.50	4002.53	40°28'03.316"N	104°25'03.233"W	1.67	
10688.00	90.570	92.370	6788.01	4097.51	25.77	4097.45	40°28'03.268"N	104°25'02.006"W	0.44	
10782.00	90.480	91.200	6787.14	4191.45	22.85	4191.40	40°28'03.227"N	104°25'00.791"W	1.25	
10877.00	90.170	89.180	6786.61	4286.44	22.53	4286.39	40°28'03.213"N	104°24'59.562"W	2.15	
10972.00	90.350	86.620	6786.17	4381.38	26.01	4381.32	40°28'03.236"N	104°24'58.333"W	2.70	
11066.00	90.380	86.260	6785.58	4475.22	31.85	4475.14	40°28'03.282"N	104°24'57.119"W	0.38	
11161.00	90.440	88.340	6784.90	4570.12	36.32	4570.02	40°28'03.315"N	104°24'55.890"W	2.19	
11256.00	90.630	90.200	6784.01	4665.10	37.53	4665.01	40°28'03.315"N	104°24'54.661"W	1.97	
11350.00	90.380	90.930	6783.18	4759.09	36.61	4759.00	40°28'03.295"N	104°24'53.445"W	0.82	
11445.00	90.440	91.260	6782.50	4854.07	34.79	4853.98	40°28'03.265"N	104°24'52.217"W	0.35	
11540.00	91.240	91.380	6781.11	4949.02	32.60	4948.94	40°28'03.232"N	104°24'50.989"W	0.85	
11634.00	91.240	90.240	6779.07	5042.98	31.28	5042.91	40°28'03.208"N	104°24'49.773"W	1.21	
11729.00	91.090	92.470	6777.14	5137.92	29.03	5137.86	40°28'03.174"N	104°24'48.545"W	2.35	
11823.00	91.060	90.680	6775.38	5231.86	26.45	5231.80	40°28'03.137"N	104°24'47.330"W	1.90	
11909.00	91.000	90.280	6773.83	5317.84	25.73	5317.78	40°28'03.120"N	104°24'46.218"W	0.47	LAST BHI MWD SURVEY
11933.00	91.000	90.280	6773.41	5341.83	25.61	5341.78	40°28'03.116"N	104°24'45.907"W	0.00	PROJECTION TO BIT

HOLE & CASING SECTIONS - Ref Wellbore: WELLS RANCH AA22-625 AWB Ref Wellpath: WELLS RANCH AA22-625 AWP									
String/Diameter	Start MD [ft]	End MD [ft]	Interval [ft]	Start TVD [ft]	End TVD [ft]	Start N/S [ft]	Start E/W [ft]	End N/S [ft]	End E/W [ft]
9.625in Casing Surface	0.00	1870.00	1870.00	0.00	1869.98	0.00	0.00	-2.87	-0.77
8.5in Open Hole	1870.00	11933.00	10063.00	1869.98	6773.41	-2.87	-0.77	25.61	5341.78

REFERENCE WELLPATH IDENTIFICATION			
Operator	NOBLE ENERGY, INC	Slot	SLOT#03 WELLS RANCH AA22-625 (1008'FSL & 80'FWL, SEC.22)
Area	COLORADO	Well	WELLS RANCH AA22-625
Field	WELD COUNTY (NOBLE NAD 83 GRID)	Wellbore	WELLS RANCH AA22-625 AWB
Facility	SEC.22-T06N-R63W		

TARGETS								
Name	TVD [ft]	North [ft]	East [ft]	Grid East [US ft]	Grid North [US ft]	Latitude	Longitude	Shape
SEC.22-T06N-R63W	0.00	-76.53	-1.86	3297157.15	1414914.69	40°28'02.748"N	104°25'55.056"W	polygon
SEC.23-T06N-R63W	0.00	-76.53	-1.86	3297157.15	1414914.69	40°28'02.748"N	104°25'55.056"W	polygon
WELLS RANCH AA22-625 KOP (35' RADII)	2500.00	0.00	0.00	3297159.01	1414991.22	40°28'03.504"N	104°25'55.020"W	circle
WELLS RANCH AA22-625 BHL ON PLAT REV-1 (980'FSL & 235'FWL, SEC.23)	6771.70	17.56	5342.45	3302501.26	1415008.78	40°28'03.036"N	104°24'45.900"W	point
WELLS RANCH AA22-625 DRILLING CORRIDOR (35'LEFT/RIGHT & 8'UP/DOWN)	6771.70	17.56	5342.45	3302501.26	1415008.78	40°28'03.036"N	104°24'45.900"W	polygon
WELLS RANCH AA22-625 DRILLING CORRIDOR (50'LEFT/RIGHT & 8'UP/DOWN)	6771.70	17.56	5342.45	3302501.26	1415008.78	40°28'03.036"N	104°24'45.900"W	polygon
WELLS RANCH AA22-625 5000'VS	6774.09	17.57	5000.75	3302159.57	1415008.79	40°28'03.077"N	104°24'50.321"W	circle

WELLPATH COMPOSITION - Ref Wellbore: WELLS RANCH AA22-625 AWB				Ref Wellpath: WELLS RANCH AA22-625 AWP	
Start MD [ft]	End MD [ft]	Positional Uncertainty Model	Log Name/Comment		Wellbore
0.00	1863.00	Gyrodatta standard - Drop gyro or Multi-shot	GYRODATA SURFACE SURVEYS <0 - 1863>		WELLS RANCH AA22-625 AWB
1863.00	11909.00	Custom BHI AutoTrak Curve (IFR1) (Rockies 0.03Gt model)	BHI AUTOTRAK (IFR1, Rockies 0.03Gt) Surcon MSA Corrected <1915 - 11909>		WELLS RANCH AA22-625 AWB
11909.00	11933.00	Blind Drilling (std)	Projection to bit		WELLS RANCH AA22-625 AWB

REFERENCE WELLPATH IDENTIFICATION

Operator	NOBLE ENERGY, INC	Slot	SLOT#03 WELLS RANCH AA22-625 (1008'FSL & 80'FWL, SEC.22)
Area	COLORADO	Well	WELLS RANCH AA22-625
Field	WELD COUNTY (NOBLE NAD 83 GRID)	Wellbore	WELLS RANCH AA22-625 AWB
Facility	SEC.22-T06N-R63W		

WELLPATH COMMENTS

MD [ft]	Inclination [°]	Azimuth [°]	TVD [ft]	Comment
1863.00	0.350	203.100	1862.98	TIED INTO GYRODATA SURVEYS
1915.00	0.620	169.970	1914.98	FIRST BHI MWD SURVEY
11909.00	91.000	90.280	6773.83	LAST BHI MWD SURVEY
11933.00	91.000	90.280	6773.41	PROJECTION TO BIT