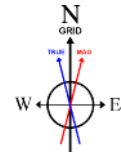


NOBLE ENERGY, INC

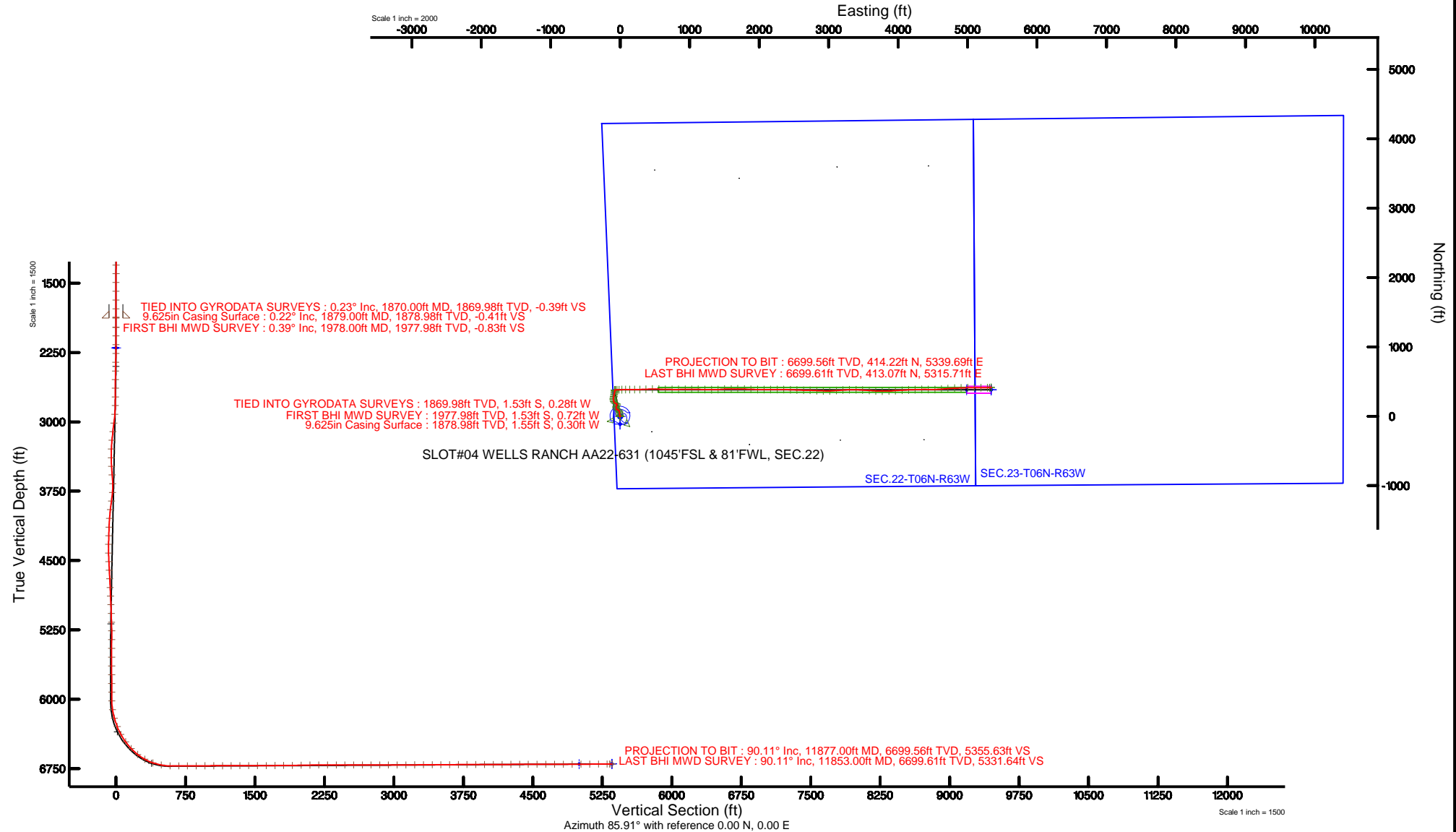
Location: COLORADO Slot: SLOT#04 WELLS RANCH AA22-631 (1045'FSL & 81'FWL, SEC.22)
 Field: WELD COUNTY (NOBLE NAD 83 GRID) Well: WELLS RANCH AA22-631
 Facility: SEC.22-T06N-R63W Wellbore: WELLS RANCH AA22-631 AWB



BGGM (1945.0 to 2017.0) Dip: 67.06° Field: 52619.1 nT
 Magnetic North is 8.30 degrees East of True North (at 3/24/16)
 Grid North is 0.69 degrees East of True North
 To correct azimuth from True to Grid subtract 0.69 degrees
 To correct azimuth from Magnetic to Grid add 7.61 degrees

Plot reference wellpath is WELLS RANCH AA22-631 (REV-A.0) PWP	Grid System: NAD83 / Lambert Colorado SP, Northern Zone (501), US feet
True vertical depths are referenced to H&P 321 (RKB)	* = Wellpath was transformed from a different geodetic datum
Measured depths are referenced to H&P 321 (RKB)	North Reference: Grid north
H&P 321 (RKB) to Mean Sea Level: 4775 feet	Scale: True distance
Mean Sea Level to Mud line (At Slot: SLOT#04 WELLS RANCH AA22-631 (1045'FSL & 81'FWL, SEC.22)): 0 feet	Depths are in feet
Coordinates are in feet referenced to Slot	Created by: cookdanm on 2016-05-25
	Database: WA_DEN_Deriver_Defn

API: 05-123-42270



REFERENCE WELLPATH IDENTIFICATION			
Operator	NOBLE ENERGY, INC	Slot	SLOT#04 WELLS RANCH AA22-631 (1045'FSL & 81'FWL, SEC.22)
Area	COLORADO	Well	WELLS RANCH AA22-631
Field	WELD COUNTY (NOBLE NAD 83 GRID)	Wellbore	WELLS RANCH AA22-631 AWB
Facility	SEC.22-T06N-R63W		

REPORT SETUP INFORMATION			
Projection System	NAD83 / Lambert Colorado SP, Northern Zone (501), US feet	Software System	WellArchitect@ 5.0
North Reference	Grid	User	Cookdanm
Scale	0.999964	Report Generated	5/25/16 at 12:58:03 PM
Convergence at slot	0.70° East	Database/Source file	WA_DEN_Denver_Defn/WELLS_RANCH_AA22-631_AWP.xml

WELLPATH LOCATION						
	Local coordinates		Grid coordinates		Geographic coordinates	
	North[ft]	East[ft]	Easting[US ft]	Northing[US ft]	Latitude	Longitude
Slot Location	112.96	1.42	3297158.57	1415027.65	40°28'03.864"N	104°25'55.020"W
Facility Reference Pt			3297157.15	1414914.69	40°28'02.748"N	104°25'55.056"W
Field Reference Pt			3000000.00	4454105.15	48°46'34.315"N	105°30'00.000"W

WELLPATH DATUM			
Calculation method	Minimum curvature	H&P 321 (RKB) to Facility Vertical Datum	4775.00ft
Horizontal Reference Pt	Slot	H&P 321 (RKB) to Mean Sea Level	4775.00ft
Vertical Reference Pt	H&P 321 (RKB)	H&P 321 (RKB) to Mud Line at Slot (SLOT#04 WELLS RANCH AA22-631 (1045'FSL & 81'FWL, SEC.22))	4775.00ft
MD Reference Pt	H&P 321 (RKB)	Section Origin	N 0.00, E 0.00 ft
Field Vertical Reference	Mean Sea Level	Section Azimuth	85.91°

REFERENCE WELLPATH IDENTIFICATION			
Operator	NOBLE ENERGY, INC	Slot	SLOT#04 WELLS RANCH AA22-631 (1045'FSL & 81'FWL, SEC.22)
Area	COLORADO	Well	WELLS RANCH AA22-631
Field	WELD COUNTY (NOBLE NAD 83 GRID)	Wellbore	WELLS RANCH AA22-631 AWB
Facility	SEC.22-T06N-R63W		

WELLPATH DATA (108 stations)										
MD [ft]	Inclination [°]	Azimuth [°]	TVD [ft]	Vert Sect [ft]	North [ft]	East [ft]	Latitude	Longitude	DLS [°/100ft]	Comments
1870.00	0.230	212.250	1869.98	-0.39	-1.53	-0.28	40°28'03.849"N	104°25'55.024"W	0.23	TIED INTO GYRODATA SURVEYS
1978.00	0.390	298.480	1977.98	-0.83	-1.53	-0.72	40°28'03.849"N	104°25'55.030"W	0.41	FIRST BHI MWD SURVEY
2072.00	0.000	7.310	2071.98	-1.10	-1.38	-1.00	40°28'03.850"N	104°25'55.033"W	0.41	
2167.00	0.060	218.050	2166.98	-1.13	-1.42	-1.03	40°28'03.850"N	104°25'55.034"W	0.06	
2262.00	2.220	339.290	2261.95	-1.69	0.26	-1.71	40°28'03.867"N	104°25'55.042"W	2.37	
2357.00	5.380	337.910	2356.73	-3.59	6.11	-4.04	40°28'03.925"N	104°25'55.071"W	3.33	
2451.00	7.640	346.410	2450.12	-5.99	16.27	-7.16	40°28'04.026"N	104°25'55.110"W	2.61	
2546.00	8.500	353.120	2544.18	-7.37	29.38	-9.49	40°28'04.155"N	104°25'55.138"W	1.34	
2640.00	8.530	356.970	2637.15	-7.58	43.24	-10.69	40°28'04.292"N	104°25'55.152"W	0.61	
2735.00	8.060	356.810	2731.15	-7.34	56.92	-11.43	40°28'04.428"N	104°25'55.159"W	0.50	
2829.00	8.190	346.820	2824.22	-8.30	70.02	-13.33	40°28'04.557"N	104°25'55.181"W	1.51	
2924.00	8.170	320.500	2918.28	-13.28	81.82	-19.17	40°28'04.675"N	104°25'55.255"W	3.91	
3019.00	7.890	297.090	3012.38	-22.77	90.00	-29.27	40°28'04.757"N	104°25'55.385"W	3.43	
3114.00	8.070	294.150	3106.46	-34.23	95.70	-41.16	40°28'04.814"N	104°25'55.538"W	0.47	
3208.00	7.850	317.360	3199.57	-44.04	103.12	-51.53	40°28'04.889"N	104°25'55.671"W	3.40	
3303.00	7.740	339.450	3293.72	-49.90	113.89	-58.17	40°28'04.996"N	104°25'55.755"W	3.14	
3398.00	8.220	359.160	3387.82	-51.33	126.67	-60.52	40°28'05.123"N	104°25'55.783"W	2.91	
3492.00	7.230	19.010	3480.98	-48.62	138.99	-58.69	40°28'05.244"N	104°25'55.758"W	3.01	
3587.00	8.610	32.730	3575.08	-42.02	150.62	-52.89	40°28'05.359"N	104°25'55.681"W	2.45	
3682.00	9.340	7.430	3668.95	-36.21	164.25	-48.05	40°28'05.493"N	104°25'55.616"W	4.19	
3777.00	9.230	324.730	3762.81	-38.62	178.13	-51.46	40°28'05.630"N	104°25'55.658"W	7.09	
3872.00	8.100	278.180	3856.84	-49.12	185.32	-62.49	40°28'05.703"N	104°25'55.800"W	7.27	
3966.00	8.100	294.900	3949.91	-61.38	189.05	-75.06	40°28'05.741"N	104°25'55.962"W	2.50	
4061.00	8.100	325.630	4044.01	-70.62	197.39	-84.91	40°28'05.825"N	104°25'56.088"W	4.50	
4156.00	9.410	345.150	4137.92	-75.44	210.43	-90.68	40°28'05.954"N	104°25'56.160"W	3.40	
4250.00	9.380	345.110	4230.66	-78.31	225.26	-94.62	40°28'06.101"N	104°25'56.209"W	0.03	
4345.00	9.470	350.640	4324.38	-80.48	240.45	-97.88	40°28'06.251"N	104°25'56.249"W	0.96	
4440.00	9.410	2.220	4418.10	-80.34	255.92	-98.85	40°28'06.404"N	104°25'56.259"W	2.00	
4534.00	9.510	12.570	4510.83	-77.27	271.18	-96.86	40°28'06.555"N	104°25'56.231"W	1.81	
4629.00	9.530	13.620	4604.52	-72.63	286.49	-93.30	40°28'06.706"N	104°25'56.182"W	0.18	

REFERENCE WELLPATH IDENTIFICATION			
Operator	NOBLE ENERGY, INC	Slot	SLOT#04 WELLS RANCH AA22-631 (1045'FSL & 81'FWL, SEC.22)
Area	COLORADO	Well	WELLS RANCH AA22-631
Field	WELD COUNTY (NOBLE NAD 83 GRID)	Wellbore	WELLS RANCH AA22-631 AWB
Facility	SEC.22-T06N-R63W		

WELLPATH DATA (108 stations)										
MD (ft)	Inclination [°]	Azimuth [°]	TVD (ft)	Vert Sect (ft)	North (ft)	East (ft)	Latitude	Longitude	DLS [°/100ft]	Comments
4723.00	9.760	12.640	4697.19	-67.97	301.82	-89.73	40°28'06.857"N	104°25'56.134"W	0.30	
4818.00	9.520	9.790	4790.85	-63.77	317.42	-86.63	40°28'07.011"N	104°25'56.091"W	0.56	
4913.00	9.340	10.990	4884.57	-59.88	332.73	-83.82	40°28'07.162"N	104°25'56.053"W	0.28	
5007.00	9.190	12.590	4977.34	-55.74	347.54	-80.73	40°28'07.308"N	104°25'56.010"W	0.32	
5102.00	6.940	12.480	5071.40	-51.92	360.55	-77.84	40°28'07.436"N	104°25'55.971"W	2.37	
5197.00	5.130	16.950	5165.87	-48.76	370.22	-75.36	40°28'07.531"N	104°25'55.937"W	1.97	
5291.00	3.200	357.020	5259.62	-47.20	376.86	-74.27	40°28'07.597"N	104°25'55.922"W	2.54	
5386.00	0.320	209.600	5354.57	-47.30	379.28	-74.54	40°28'07.620"N	104°25'55.925"W	3.66	
5481.00	0.040	242.870	5449.57	-47.48	379.03	-74.70	40°28'07.618"N	104°25'55.927"W	0.30	
5575.00	0.130	177.300	5543.57	-47.51	378.91	-74.72	40°28'07.617"N	104°25'55.928"W	0.13	
5670.00	0.070	105.730	5638.57	-47.46	378.79	-74.66	40°28'07.616"N	104°25'55.927"W	0.13	
5765.00	0.220	151.880	5733.57	-47.33	378.61	-74.52	40°28'07.614"N	104°25'55.925"W	0.19	
5860.00	0.150	118.420	5828.57	-47.15	378.39	-74.33	40°28'07.612"N	104°25'55.923"W	0.13	
5954.00	0.130	116.540	5922.57	-46.95	378.29	-74.12	40°28'07.611"N	104°25'55.920"W	0.02	
6049.00	0.440	114.050	6017.57	-46.54	378.09	-73.69	40°28'07.609"N	104°25'55.914"W	0.33	
6144.00	9.300	79.460	6112.14	-38.57	379.35	-65.80	40°28'07.620"N	104°25'55.812"W	9.41	
6238.00	16.200	87.110	6203.77	-17.89	381.40	-45.21	40°28'07.638"N	104°25'55.545"W	7.54	
6333.00	21.030	89.350	6293.77	12.39	382.26	-14.91	40°28'07.643"N	104°25'55.153"W	5.14	
6428.00	28.300	87.290	6380.05	51.97	383.52	24.68	40°28'07.651"N	104°25'54.641"W	7.70	
6522.00	37.170	88.030	6459.04	102.73	385.56	75.42	40°28'07.665"N	104°25'53.984"W	9.45	
6617.00	42.750	91.710	6531.84	163.54	385.58	136.39	40°28'07.658"N	104°25'53.195"W	6.38	
6712.00	51.380	90.230	6596.49	232.76	384.47	205.86	40°28'07.638"N	104°25'52.297"W	9.16	
6806.00	60.980	87.620	6648.76	310.65	386.03	283.84	40°28'07.645"N	104°25'51.288"W	10.47	
6901.00	71.390	88.000	6687.06	397.39	389.34	370.57	40°28'07.667"N	104°25'50.165"W	10.96	
6996.00	79.420	89.580	6710.98	489.13	391.25	462.40	40°28'07.675"N	104°25'48.977"W	8.60	
7090.00	89.430	91.310	6720.11	582.27	390.52	555.83	40°28'07.656"N	104°25'47.768"W	10.80	
7185.00	90.170	91.300	6720.44	676.85	388.35	650.81	40°28'07.624"N	104°25'46.540"W	0.78	
7280.00	90.410	90.420	6719.96	771.49	386.93	745.79	40°28'07.598"N	104°25'45.311"W	0.96	
7374.00	90.200	89.630	6719.46	865.25	386.88	839.79	40°28'07.587"N	104°25'44.095"W	0.87	
7469.00	90.230	89.150	6719.10	960.07	387.90	934.79	40°28'07.585"N	104°25'42.866"W	0.51	

REFERENCE WELLPATH IDENTIFICATION			
Operator	NOBLE ENERGY, INC	Slot	SLOT#04 WELLS RANCH AA22-631 (1045'FSL & 81'FWL, SEC.22)
Area	COLORADO	Well	WELLS RANCH AA22-631
Field	WELD COUNTY (NOBLE NAD 83 GRID)	Wellbore	WELLS RANCH AA22-631 AWB
Facility	SEC.22-T06N-R63W		

WELLPATH DATA (108 stations)										
MD (ft)	Inclination [°]	Azimuth [°]	TVD (ft)	Vert Sect (ft)	North (ft)	East (ft)	Latitude	Longitude	DLS [°/100ft]	Comments
7564.00	90.110	89.180	6718.82	1054.92	389.28	1029.78	40°28'07.588"N	104°25'41.637"W	0.13	
7658.00	89.980	92.090	6718.74	1148.59	388.24	1123.76	40°28'07.566"N	104°25'40.421"W	3.10	
7753.00	90.140	91.130	6718.64	1243.12	385.57	1218.72	40°28'07.528"N	104°25'39.193"W	1.02	
7848.00	90.230	90.900	6718.34	1337.74	383.89	1313.71	40°28'07.500"N	104°25'37.964"W	0.26	
7943.00	90.200	86.820	6717.98	1432.59	385.78	1408.67	40°28'07.508"N	104°25'36.735"W	4.29	
8037.00	90.080	87.460	6717.75	1526.57	390.47	1502.55	40°28'07.543"N	104°25'35.520"W	0.69	
8132.00	90.480	89.270	6717.29	1621.48	393.18	1597.50	40°28'07.558"N	104°25'34.291"W	1.95	
8227.00	90.540	90.430	6716.44	1716.25	393.43	1692.50	40°28'07.549"N	104°25'33.062"W	1.22	
8321.00	90.790	91.840	6715.35	1809.85	391.56	1786.47	40°28'07.520"N	104°25'31.846"W	1.52	
8416.00	90.390	91.670	6714.37	1904.35	388.65	1881.42	40°28'07.480"N	104°25'30.618"W	0.46	
8511.00	91.250	91.310	6713.01	1998.89	386.18	1976.38	40°28'07.444"N	104°25'29.390"W	0.98	
8606.00	90.630	89.870	6711.45	2093.56	385.21	2071.36	40°28'07.423"N	104°25'28.162"W	1.65	
8700.00	90.110	89.180	6710.85	2187.37	385.99	2165.35	40°28'07.419"N	104°25'26.945"W	0.92	
8795.00	90.850	90.170	6710.05	2282.16	386.53	2260.34	40°28'07.413"N	104°25'25.716"W	1.30	
8890.00	90.020	91.110	6709.33	2376.83	385.46	2355.33	40°28'07.391"N	104°25'24.488"W	1.32	
8984.00	89.680	92.070	6709.58	2470.36	382.86	2449.30	40°28'07.354"N	104°25'23.272"W	1.08	
9079.00	89.620	92.460	6710.16	2564.78	379.10	2544.22	40°28'07.306"N	104°25'22.045"W	0.42	
9174.00	89.830	90.820	6710.61	2659.30	376.38	2639.18	40°28'07.267"N	104°25'20.817"W	1.74	
9268.00	90.230	91.710	6710.56	2752.89	374.31	2733.15	40°28'07.236"N	104°25'19.601"W	1.04	
9363.00	90.140	92.500	6710.26	2847.33	370.82	2828.09	40°28'07.190"N	104°25'18.374"W	0.84	
9457.00	90.080	91.600	6710.08	2940.79	367.46	2922.03	40°28'07.145"N	104°25'17.159"W	0.96	
9552.00	90.140	89.260	6709.89	3035.49	366.74	3017.02	40°28'07.127"N	104°25'15.930"W	2.46	
9647.00	90.290	85.450	6709.54	3130.44	371.13	3111.90	40°28'07.159"N	104°25'14.702"W	4.01	
9741.00	90.320	86.110	6709.04	3224.44	378.04	3205.64	40°28'07.216"N	104°25'13.488"W	0.70	
9836.00	90.480	89.270	6708.37	3319.38	381.87	3300.55	40°28'07.242"N	104°25'12.259"W	3.33	
9930.00	90.230	91.320	6707.79	3413.10	381.39	3394.54	40°28'07.226"N	104°25'11.043"W	2.20	
10025.00	90.290	93.180	6707.36	3507.51	377.66	3489.46	40°28'07.178"N	104°25'09.816"W	1.96	
10120.00	90.380	93.780	6706.80	3601.68	371.89	3584.29	40°28'07.109"N	104°25'08.590"W	0.64	
10215.00	90.260	92.620	6706.27	3695.91	366.59	3679.13	40°28'07.046"N	104°25'07.364"W	1.23	
10309.00	90.350	90.690	6705.77	3789.43	363.87	3773.09	40°28'07.007"N	104°25'06.149"W	2.06	

REFERENCE WELLPATH IDENTIFICATION			
Operator	NOBLE ENERGY, INC	Slot	SLOT#04 WELLS RANCH AA22-631 (1045'FSL & 81'FWL, SEC.22)
Area	COLORADO	Well	WELLS RANCH AA22-631
Field	WELD COUNTY (NOBLE NAD 83 GRID)	Wellbore	WELLS RANCH AA22-631 AWB
Facility	SEC.22-T06N-R63W		

WELLPATH DATA (108 stations)										
MD [ft]	Inclination [°]	Azimuth [°]	TVD [ft]	Vert Sect [ft]	North [ft]	East [ft]	Latitude	Longitude	DLS ["/100ft]	Comments
10404.00	90.230	87.820	6705.29	3884.26	365.11	3868.07	40°28'07.008"N	104°25'04.920"W	3.02	
10498.00	90.300	85.720	6704.86	3978.24	370.41	3961.91	40°28'07.049"N	104°25'03.705"W	2.24	
10593.00	90.140	86.960	6704.49	4073.24	376.47	4056.72	40°28'07.098"N	104°25'02.477"W	1.32	
10688.00	90.110	87.850	6704.29	4168.20	380.77	4151.62	40°28'07.129"N	104°25'01.249"W	0.94	
10782.00	90.260	88.050	6703.98	4262.14	384.13	4245.56	40°28'07.151"N	104°25'00.033"W	0.27	
10877.00	90.140	88.830	6703.65	4357.05	386.72	4340.52	40°28'07.165"N	104°24'58.804"W	0.83	
10971.00	90.200	91.450	6703.37	4450.79	386.49	4434.51	40°28'07.151"N	104°24'57.588"W	2.79	
11066.00	90.170	88.550	6703.06	4545.53	386.49	4529.50	40°28'07.140"N	104°24'56.359"W	3.05	
11161.00	90.230	84.820	6702.73	4640.51	391.98	4624.33	40°28'07.182"N	104°24'55.131"W	3.93	
11255.00	90.170	85.900	6702.40	4734.50	399.59	4718.02	40°28'07.246"N	104°24'53.918"W	1.15	
11350.00	90.170	87.780	6702.12	4829.48	404.82	4812.87	40°28'07.287"N	104°24'52.690"W	1.98	
11445.00	90.110	87.780	6701.89	4924.43	408.50	4907.80	40°28'07.311"N	104°24'51.461"W	0.06	
11540.00	90.050	89.070	6701.76	5019.34	411.11	5002.76	40°28'07.326"N	104°24'50.232"W	1.36	
11634.00	90.320	89.710	6701.45	5113.16	412.11	5096.75	40°28'07.324"N	104°24'49.016"W	0.74	
11729.00	90.850	90.870	6700.48	5207.88	411.63	5191.74	40°28'07.308"N	104°24'47.787"W	1.34	
11823.00	90.140	88.670	6699.67	5301.66	412.01	5285.73	40°28'07.300"N	104°24'46.571"W	2.46	
11853.00	90.110	87.270	6699.61	5331.64	413.07	5315.71	40°28'07.307"N	104°24'46.183"W	4.67	LAST BHI MWD SURVEY
11877.00	90.110	87.270	6699.56	5355.63	414.22	5339.69	40°28'07.316"N	104°24'45.873"W	0.00	PROJECTION TO BIT

HOLE & CASING SECTIONS - Ref Wellbore: WELLS RANCH AA22-631 AWB Ref Wellpath: WELLS RANCH AA22-631 AWP										
String/Diameter	Start MD [ft]	End MD [ft]	Interval [ft]	Start TVD [ft]	End TVD [ft]	Start N/S [ft]	Start E/W [ft]	End N/S [ft]	End E/W [ft]	
9.625in Casing Surface	0.00	1879.00	1879.00	0.00	1878.98	0.00	0.00	-1.55	-0.30	
8.5in Open Hole	1879.00	11877.00	9998.00	1878.98	6699.56	-1.55	-0.30	414.22	5339.69	

REFERENCE WELLPATH IDENTIFICATION			
Operator	NOBLE ENERGY, INC	Slot	SLOT#04 WELLS RANCH AA22-631 (1045'FSL & 81'FWL, SEC.22)
Area	COLORADO	Well	WELLS RANCH AA22-631
Field	WELD COUNTY (NOBLE NAD 83 GRID)	Wellbore	WELLS RANCH AA22-631 AWB
Facility	SEC.22-T06N-R63W		

TARGETS								
Name	TVD [ft]	North [ft]	East [ft]	Grid East [US ft]	Grid North [US ft]	Latitude	Longitude	Shape
SEC.22-T06N-R63W	0.00	-112.96	-1.42	3297157.15	1414914.69	40°28'02.748"N	104°25'55.056"W	polygon
SEC.23-T06N-R63W	0.00	-112.96	-1.42	3297157.15	1414914.69	40°28'02.748"N	104°25'55.056"W	polygon
WELLS RANCH AA22-631 KOP (35' RADII)	2200.00	0.00	0.00	3297158.57	1415027.64	40°28'03.864"N	104°25'55.020"W	circle
WELLS RANCH AA22-631 BHL ON PLAT REV-1 (1383'FSL & 235'FWL, SEC.23)	6698.90	381.89	5340.76	3302499.13	1415409.52	40°28'06.996"N	104°24'45.864"W	point
WELLS RANCH AA22-631 DRILLING CORRIDOR (35'LEFT/RIGHT & 8'UP/DOWN)	6698.90	381.89	5340.76	3302499.13	1415409.52	40°28'06.996"N	104°24'45.864"W	polygon
WELLS RANCH AA22-631 DRILLING CORRIDOR (50'LEFT/RIGHT & 8'UP/DOWN)	6698.90	381.89	5340.76	3302499.13	1415409.52	40°28'06.996"N	104°24'45.864"W	polygon
WELLS RANCH AA22-631 5000'VS	6700.76	381.89	4985.71	3302144.09	1415409.52	40°28'07.039"N	104°24'50.457"W	point

WELLPATH COMPOSITION - Ref Wellbore: WELLS RANCH AA22-631 AWB Ref Wellpath: WELLS RANCH AA22-631 AWP				
Start MD [ft]	End MD [ft]	Positional Uncertainty Model	Log Name/Comment	Wellbore
0.00	1870.00	Gyrodata standard - Drop gyro or Multi-shot	GYRODATA SURFACE SURVEYS <82 - 1870>	WELLS RANCH AA22-631 AWB
1870.00	11853.00	Custom BHI AutoTrak Curve (IFR1, Short) (Rockies 0.03Gt model)	BHI MWD 8 1/2" AUTOTRAK CURVE (MSA CORRECTED BY SURCON, IFR1, SHORT) <1870 - 11853>	WELLS RANCH AA22-631 AWB
11853.00	11877.00	Blind Drilling (std)	Projection to bit	WELLS RANCH AA22-631 AWB

REFERENCE WELLPATH IDENTIFICATION			
Operator	NOBLE ENERGY, INC	Slot	SLOT#04 WELLS RANCH AA22-631 (1045'FSL & 81'FWL, SEC.22)
Area	COLORADO	Well	WELLS RANCH AA22-631
Field	WELD COUNTY (NOBLE NAD 83 GRID)	Wellbore	WELLS RANCH AA22-631 AWB
Facility	SEC.22-T06N-R63W		

WELLPATH COMMENTS				
MD [ft]	Inclination [°]	Azimuth [°]	TVD [ft]	Comment
1870.00	0.230	212.250	1869.98	TIED INTO GYRODATA SURVEYS
1978.00	0.390	298.480	1977.98	FIRST BHI MWD SURVEY
11853.00	90.110	87.270	6699.61	LAST BHI MWD SURVEY
11877.00	90.110	87.270	6699.56	PROJECTION TO BIT