

1801 Broadway
Suite 500
Denver, Colorado 80202



Callie Fiddes
Regulatory Compliance Specialist
Tel: 303.398.0550
E-mail: cfiddes@gwogco.com

12/3/2015

Colorado Oil and Gas Conservation Commission
1120 Lincoln Street, Suite 801
Denver, Colorado 80203

RE: **Proposed Wellbore Spacing Unit**
DITTMER KE 29-038HN
Niobrara New Drill

NENW Section 32
Township 1N, Range 66W, 6th P.M.
Weld County, Colorado

Dear Director:

Great Western Operating Company, LLC is planning to drill the above captioned well in accordance with the provisions of COGCC Rule 318A.e.

Great Western proposed wellbore spacing unit consists of:

- **1N-66W-29: E2**
- **320 acres**

The 30 day notification time period has passed and we have not received any objections to such well locations or proposed spacing unit, therefore Great Western hereby requests the Director to approve the above mentioned well. Great Western Operating Company, LLC respectfully requests that the COGCC review the enclosed map illustrating the proposed wellbore spacing unit.

Respectfully,

Callie Fiddes

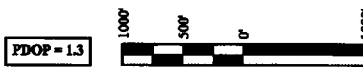
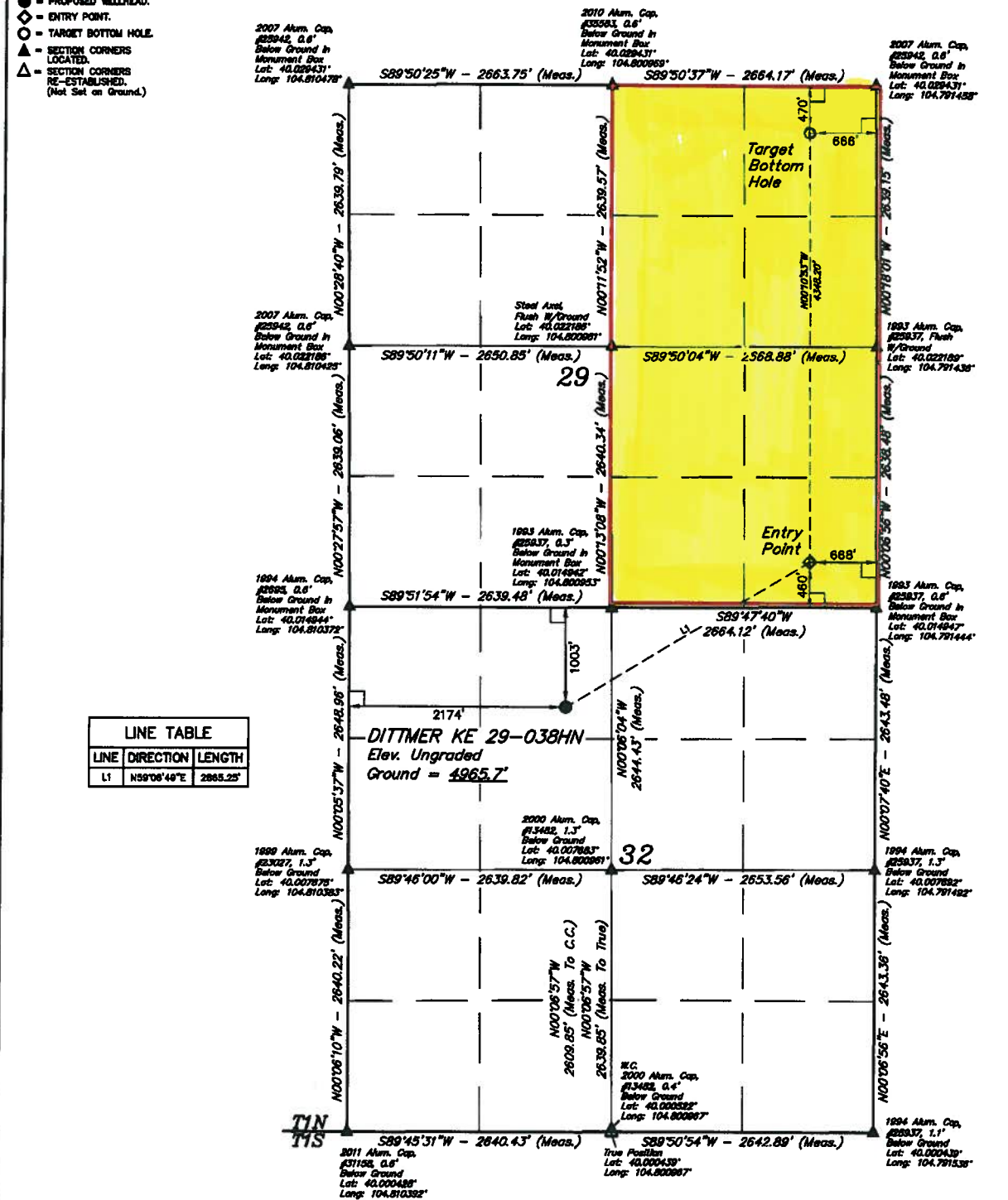
Callie Fiddes
Regulatory Compliance Specialist
Great Western Operating Company, LLC

LEGEND:

- 90° SYMBOL
- PROPOSED WELLHEAD.
- ◆ ENTRY POINT.
- TARGET BOTTOM HOLE.
- ▲ SECTION CORNERS LOCATED.
- △ SECTION CORNERS RE-ESTABLISHED. (Not Set on Ground.)

T1N, R66W, 6th P.M.

LINE TABLE		
LINE	DIRECTION	LENGTH
L1	N59°08'40"E	2885.25'



NAD 83 (TARGET BOTTOM HOLE)	NAD 83 (ENTRY POINT)	NAD 83 (SURFACE LOCATION)
LATITUDE - 40°01'41.31" (40.028142)	LATITUDE - 40°00'58.35" (40.016208)	LATITUDE - 40°00'43.88" (40.012189)
LONGITUDE - 104°47'37.77" (104.793831)	LONGITUDE - 104°47'37.77" (104.793832)	LONGITUDE - 104°48'09.43" (104.802617)
NAD 83 (TARGET BOTTOM HOLE)	NAD 83 (ENTRY POINT)	NAD 83 (SURFACE LOCATION)
LATITUDE - 40°01'41.37" (40.028138)	LATITUDE - 40°00'58.41" (40.016225)	LATITUDE - 40°00'43.94" (40.012205)
LONGITUDE - 104°47'35.90" (104.793306)	LONGITUDE - 104°47'35.88" (104.793309)	LONGITUDE - 104°48'07.53" (104.802089)

BASE OF BEARINGS
 BASE OF BEARINGS IS A CYA OBSERVATION

BASE OF ELEVATION
 HURRS TRIANGULATION STATION LOCATED IN THE NE 1/4 OF SECTION 21, T1N, R64W, 6th P.M., TAKEN FROM THE KRONZBURG QUADRANGLE, COLORADO, WELD COUNTY, 7.5 MINUTE QUAD (TOPOGRAPHIC MAP) PUBLISHED BY THE UNITED STATES DEPARTMENT OF THE INTERIOR, GEOLOGICAL SURVEY. SAID ELEVATION IS MARKED AS BEING 5168 FT.



UELS, LLC
 Corporate Office • 85 South 200 East
 Vernal, UT 84078 • (435) 789-1817



GREAT WESTERN OPERATING COMPANY

DITTMER KE 29-038HN
 NE 1/4 NW 1/4, SECTION 32, T1N, R66W, 6th P.M.
 WELD COUNTY, COLORADO

SURVEYED BY: DALLAS NELSEN, B.C.	SURVEY DATE: 04-03-15
DRAWN BY: J.W.	DATE DRAWN: 04-07-15
SCALE: 1" = 1000'	REVISED: 02-03-16 C.C.

WELL LOCATION PLAT

CERTIFICATE
 THIS IS TO CERTIFY THAT THE ABOVE IS A TRUE AND CORRECT COPY OF THE ORIGINAL SURVEY RECORD AND THAT THE SAME ARE TRUE AND CORRECT TO THE BEST OF MY KNOWLEDGE AND BELIEF.

REGISTERED LAND SURVEYOR
 RILEY W. NELSON, No. 2625
 STATE OF COLORADO, No. 18