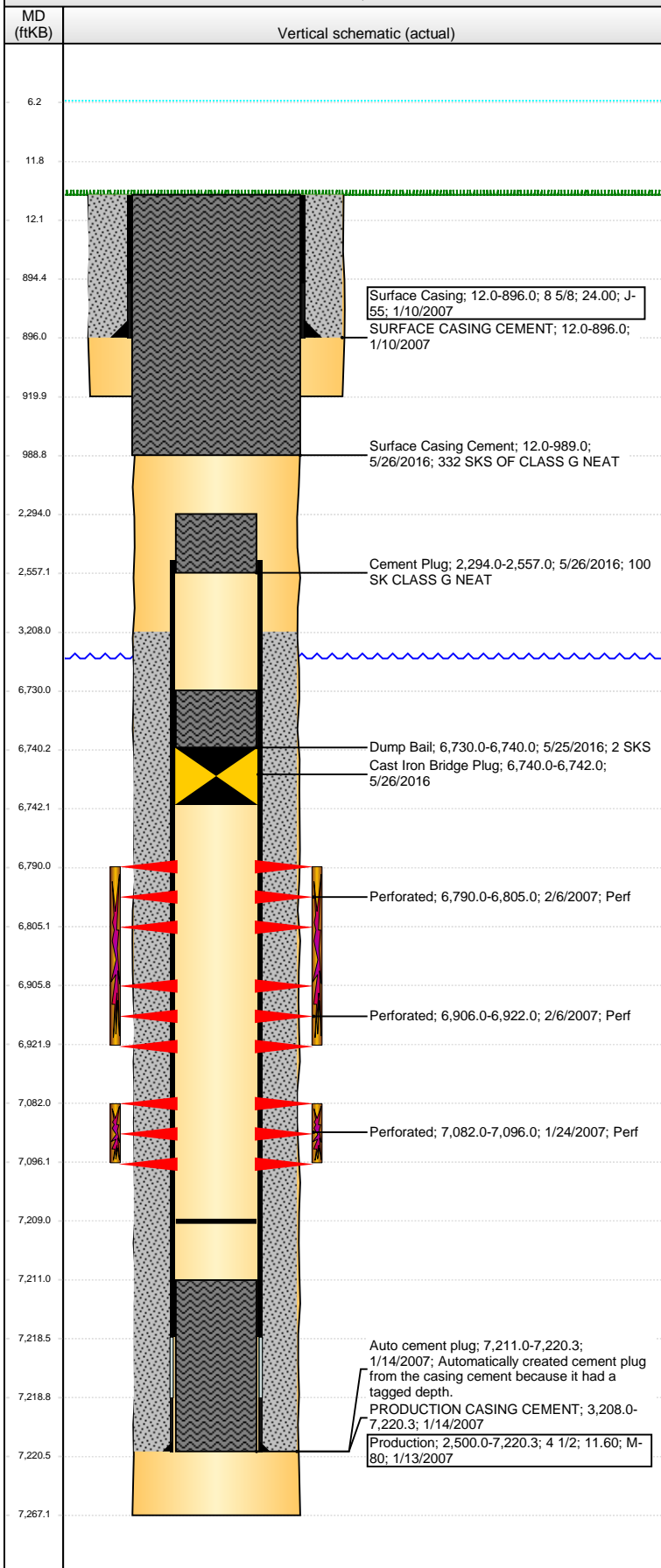


Well Name: DYER USX AB35-13

VERTICAL - ORIGINAL HOLE, 6/23/2016 1:17:36 PM



Well Header									
API 05-123-24547		Business Unit DJ BASIN		District 15		Well Config VERTICAL			
Original KB Elevation (ft) 4,836		KB - GL / MSL (ftKB) 12.00		Spud Date 1/9/2007		P & A Date 5/28/2016			
Comment PUSH FP TO 7209									
Directions To Well XRDS OF 74/57 E. 25 N.2 W INTO									
Congressional Location									
Quarter 1	Quarter 2	Quarter 3 SW	Quarter 4 SW	Section 35	Township 7 N	Twntshp N...	Range 64	Rng E/W Dir W	
Bottom Hole Location									
North-South Distance (ft)		From N or S Line		East-West Distance (ft)		From E or W Line			
Plug Back Total Depths									
Date	Depth (ftKB)	Method			Com				
1/13/2007	7,219.4	CASING TALLY			FLOAT COLLAR ON CASING TALLY				
1/22/2007	7,211.0	CASED HOLE LOG			DEPTH LOGGER ON CBL				
2/20/2007	7,209.0	TAG			PUSHED CIPF TO +/- 7209				
Wellbore Sections									
Section Des			Size (in)		Act Top, MD (ftKB)		Act Btm, MD (ftKB)		
SURFACE			12 1/4		12		920		
PRODUCTION			7 7/8		920		7,267		
Zone Statuses									
Zone Name	Status Date	Status	Fluid Type	Job	Prod Method				
CODELL	2/9/2007	PR		DRILLING/CO...					
CODELL	5/28/2016	P&A		ABANDON WE...					
NIOBRARA	2/9/2007	PR		DRILLING/CO...					
NIOBRARA	5/28/2016	P&A		ABANDON WE...					
Casing Strings									
Surface Casing, 896.0ftKB									
Casing Description Surface Casing		Run Date 1/10/2007	OD (in) 8 5/8	Wt/Len (l...) 24.00	Grade J-55	Top, MD (ft...) 12.0	MD (ftKB) 896.0		
Production, 7,220.4ftKB									
Casing Description Production		Run Date 1/13/2007	OD (in) 4 1/2	Wt/Len (l...) 11.60	Grade M-80	Top, MD (ft...) 12.0	MD (ftKB) 7,220.4		
Cement									
Description SURFACE CASING CEMENT				Top Depth (ftKB) 12.0		Bottom Depth (ftKB) 896.0			
Description PRODUCTION CASING CEMENT				Top Depth (ftKB) 3,208.0		Bottom Depth (ftKB) 7,220.4			
Description Dump Bail				Top Depth (ftKB) 6,730.0		Bottom Depth (ftKB) 6,740.0			
Description Cement Plug				Top Depth (ftKB) 2,294.0		Bottom Depth (ftKB) 2,557.0			
Description Surface Casing Cement				Top Depth (ftKB) 12.0		Bottom Depth (ftKB) 989.0			
Tubing Strings									
Tubing Description Tubing		Run Date 2/21/2007	String... 2 3/8	ID (in) 1.995	Wt (lb/ft) 4.70	Grade J-55	Len (ft) 7,056.	Set De... 34	
Perforation Data									
Zone		Bnch/St g	Entered Shot Total	Top (ftKB)		Btm (ftKB)		Date	
NIOBRARA, ORIGINAL HOLE		A	60	6,790.00		6,805.00		2/6/2007	
NIOBRARA, ORIGINAL HOLE		B	64	6,906.00		6,922.00		2/6/2007	
CODELL, ORIGINAL HOLE			56	7,082.00		7,096.00		1/24/2007	
Stimulations & Treatments									
Date 2/6/2007	Zone NIOBRARA, ORIGINAL HOLE			Primary Job Type DRILLING/COMPLETION - ORIGINAL					
Technical Result			Tech Result Details			Tech Result Note			
Comment									
Date 2/6/2007	Zone CODELL, ORIGINAL HOLE			Primary Job Type DRILLING/COMPLETION - ORIGINAL					
Technical Result			Tech Result Details			Tech Result Note			
Comment									

Well Name: DYER USX AB35-13

VERTICAL - ORIGINAL HOLE, 6/23/2016 1:17:38 PM

Other In Hole

Run Date	Des	OD (in)	Top (ftKB)	Btm (ftKB)
5/26/2016	Cast Iron Bridge Plug	4	6,740.0	6,742.0

Date	Type	Top, MD (ftKB)	Btm, MD (ftKB)
1/14/2007	COMPENSATED DENSITY	2,790.0	7,247.0
1/14/2007	INDUCTION	896.0	7,267.0
1/22/2007	CBL/CCL/GR	3,051.0	7,209.0

