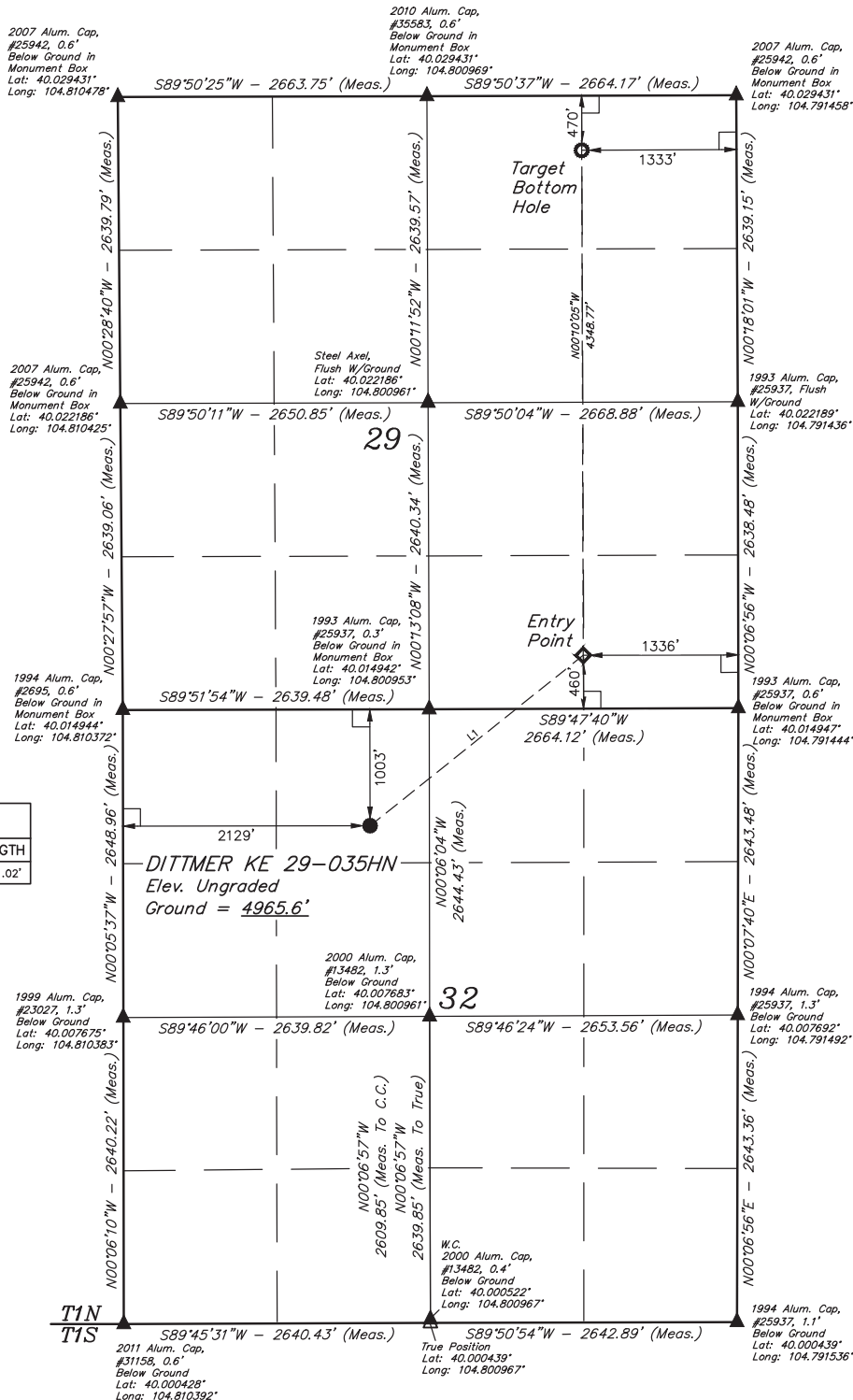


# LEGEND:

- = 90° SYMBOL
- = PROPOSED WELLHEAD.
- ◆ = ENTRY POINT.
- = TARGET BOTTOM HOLE.
- ▲ = SECTION CORNERS LOCATED.
- △ = SECTION CORNERS RE-ESTABLISHED (Not Set on Ground.)

T1N, R66W, 6th P.M.



LINE TABLE		
LINE	DIRECTION	LENGTH
L1	N51°20'35"E	2351.02'



<b>NAD 83 (TARGET BOTTOM HOLE)</b> LATITUDE = 40°01'41.31" (40.028142) LONGITUDE = 104°47'46.37" (104.796214)	<b>NAD 83 (ENTRY POINT)</b> LATITUDE = 40°00'58.34" (40.016206) LONGITUDE = 104°47'46.35" (104.796208)	<b>NAD 83 (SURFACE LOCATION)</b> LATITUDE = 40°00'43.88" (40.012189) LONGITUDE = 104°48'10.00" (104.802778)
<b>NAD 27 (TARGET BOTTOM HOLE)</b> LATITUDE = 40°01'41.37" (40.028158) LONGITUDE = 104°47'44.47" (104.795686)	<b>NAD 27 (ENTRY POINT)</b> LATITUDE = 40°00'58.40" (40.016222) LONGITUDE = 104°47'44.46" (104.795683)	<b>NAD 27 (SURFACE LOCATION)</b> LATITUDE = 40°00'43.94" (40.012206) LONGITUDE = 104°48'08.10" (104.802250)

**BASIS OF BEARINGS**  
BASIS OF BEARINGS IS A G.P.S. OBSERVATION

**BASIS OF ELEVATION**  
HUBBS TRIANGULATION STATION LOCATED IN THE NE 1/4 OF SECTION 21, T1N, R64W, 6th P.M., TAKEN FROM THE KEENESBURG, QUADRANGLE, COLORADO, WELD COUNTY, 7.5 MINUTE QUAD (TOPOGRAPHIC MAP) PUBLISHED BY THE UNITED STATES DEPARTMENT OF THE INTERIOR, GEOLOGICAL SURVEY. SAID ELEVATION IS MARKED AS BEING 5168 FEET.



**UELS, LLC**  
Corporate Office \* 85 South 200 East  
Vernal, UT 84078 \* (435) 789-1017



CERTIFICATION  
THIS IS TO CERTIFY THAT THE ABOVE PLAT WAS PREPARED IN ACCORDANCE WITH THE NOTES OF ACTUAL SURVEYS MADE BY ME, UNDER MY SUPERVISION, AND THAT THE SAME ARE TRUE AND CORRECT TO THE BEST OF MY KNOWLEDGE AND BELIEF.

REGISTERED LAND SURVEYOR  
REGISTRATION NO. 28285  
STATE OF COLORADO  
JAN 16

**GREAT WESTERN OPERATING COMPANY**

**DITTNER KE 29-035HN**  
**NE 1/4 NW 1/4, SECTION 32, T1N, R66W, 6th P.M.**  
**WELD COUNTY, COLORADO**

SURVEYED BY: DALLAS NIELSEN, B.C.	SURVEY DATE: 04-03-15
DRAWN BY: J.W.	DATE DRAWN: 04-07-15
SCALE: 1" = 1000'	REVISED: 02-03-16 C.C.

**WELL LOCATION PLAT**