

**LAMP RYNEARSON**  
 & ASSOCIATES

4715 Innovation Drive 970.226.0342 | P  
 Fort Collins, CO 80525 970.226.0879 | F  
 www.LRA-Inc.com

**DRAWN BY**  
 KJW

**DATE**  
 2/26/16

**COGCC ID**

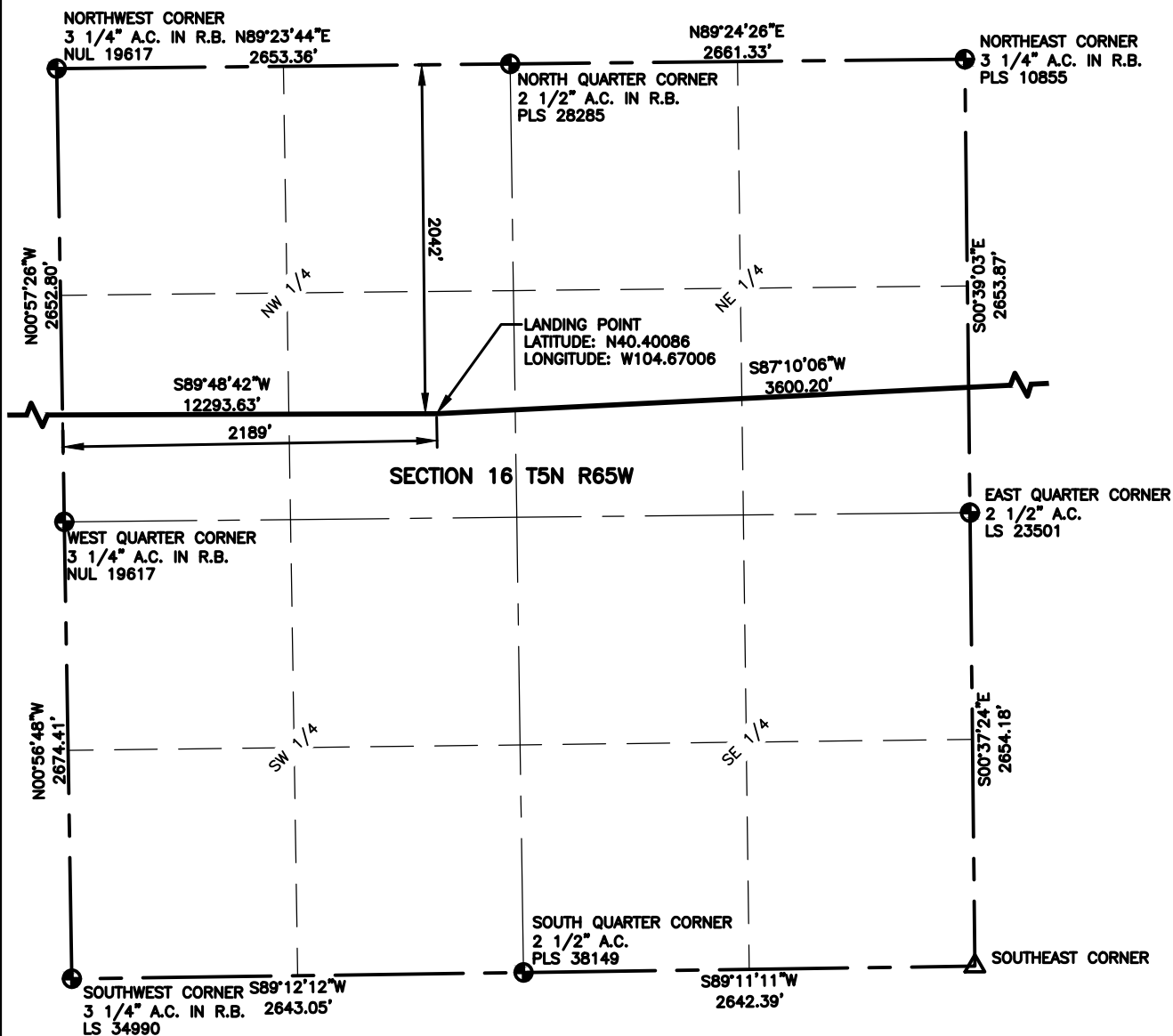
**PROJECT - TASK NUMBER**  
 0215036.00

**BOOK AND PAGE**  
 MRI-04 PG-6

**SURFACE - LOCATION**

SW /4, NW /4, SEC 15 T5N R65W

PATH\FILENAME P:\\_Engineering\0215036 Vetting 15 H\DRAWINGS\EXHIBITS\0215036EXWP-09.dwg



### LEGEND

- |   |                   |
|---|-------------------|
| △ COMPUTED ALIQUOT CORNER FROM MONUMENT RECORDS | ⊙ PROPOSED WELL   |
| ⊕ ALIQUOT CORNER                                | A.C. ALUMINUM CAP |
| ■ COMPUTED ALIQUOT CORNER FROM GLO RECORDS      | R.B. RANGE BOX    |
| ⊖ BOTTOM HOLE                                   |                   |

### NOTES:

- DISTANCES ARE MEASURED PERPENDICULAR TO NEAREST SECTION LINE AND ARE SHOWN ON THE SAME SIDE OF THE SECTION LINE WHERE THE WELL IS LOCATED.
- THIS MAP DOES NOT REPRESENT A MONUMENTED BOUNDARY SURVEY. SIXTEENTH CORNER LOCATIONS ARE COMPUTED, UNLESS OTHERWISE NOTED.
- BOTTOM HOLE LOCATIONS AND HORIZONTAL COMPLETION ZONE PROVIDED BY OTHERS.



0 1000  
 SCALE: 1"= 1000'  
 U.S. SURVEY FEET



**LAMP RYNEARSON**  
 & ASSOCIATES

4715 Innovation Drive 970.226.0342 | P  
 Fort Collins, CO 80525 970.226.0879 | F  
[www.LRA-Inc.com](http://www.LRA-Inc.com)

PROPOSED WELL LOCATION EXHIBIT  
 VT-LDS 5-16-18  
 2 OF 4

**DRAWN BY**  
 KJW  
**PATH/FILENAME**

**DATE**  
 2/26/16

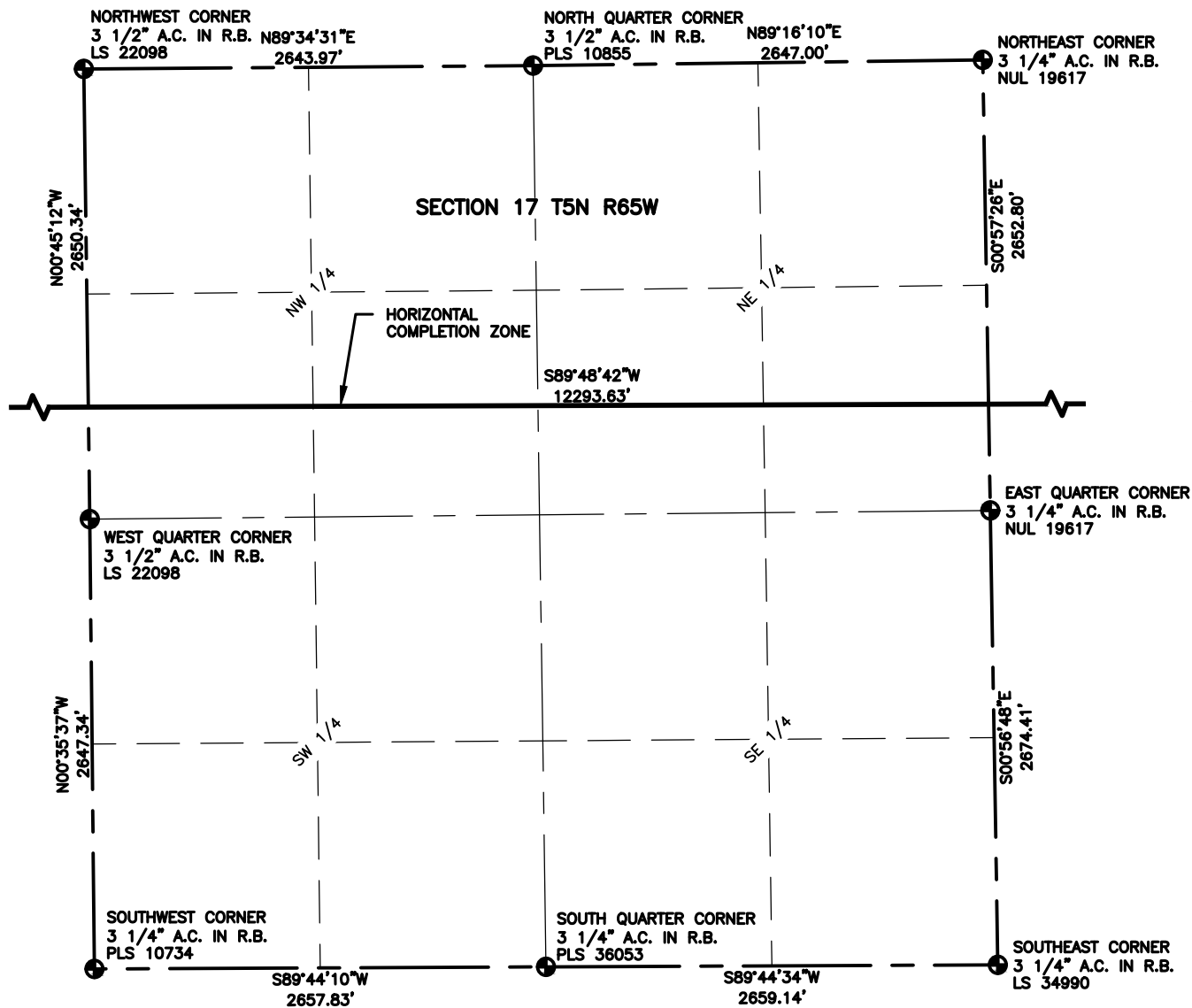
**COGCC ID**

**PROJECT - TASK NUMBER**  
 0215036.00

**BOOK AND PAGE**  
 MRI-04 PG-6

**SURFACE - LOCATION**  
 SW /4, NW /4, SEC 15 T5N  
 R65W

P:\\_Engineering\0215036 Vetting 15 H\DRAWINGS\EXHIBITS\0215036EXWP-09-A.dwg



### LEGEND

- △ COMPUTED ALIQUOT CORNER FROM MONUMENT RECORDS
- ⊙ PROPOSED WELL
- ⊕ ALIQUOT CORNER
- A.C. ALUMINUM CAP
- COMPUTED ALIQUOT CORNER FROM GLO RECORDS
- R.B. RANGE BOX
- ⊖ BOTTOM HOLE

### NOTES:

- DISTANCES ARE MEASURED PERPENDICULAR TO NEAREST SECTION LINE AND ARE SHOWN ON THE SAME SIDE OF THE SECTION LINE WHERE THE WELL IS LOCATED.
- THIS MAP DOES NOT REPRESENT A MONUMENTED BOUNDARY SURVEY. SIXTEENTH CORNER LOCATIONS ARE COMPUTED, UNLESS OTHERWISE NOTED.
- BOTTOM HOLE LOCATIONS AND HORIZONTAL COMPLETION ZONE PROVIDED BY OTHERS.



SCALE: 1"= 1000'  
U.S. SURVEY FEET



**LAMP RYNEARSON**  
& ASSOCIATES

4715 Innovation Drive 970.226.0342 | P  
Fort Collins, CO 80525 970.226.0879 | F  
www.LRA-Inc.com

PROPOSED WELL LOCATION EXHIBIT  
VT-LDS 5-16-18  
3 OF 4

**DRAWN BY**  
KJW  
**PATH/FILENAME**

**DATE**  
2/26/16

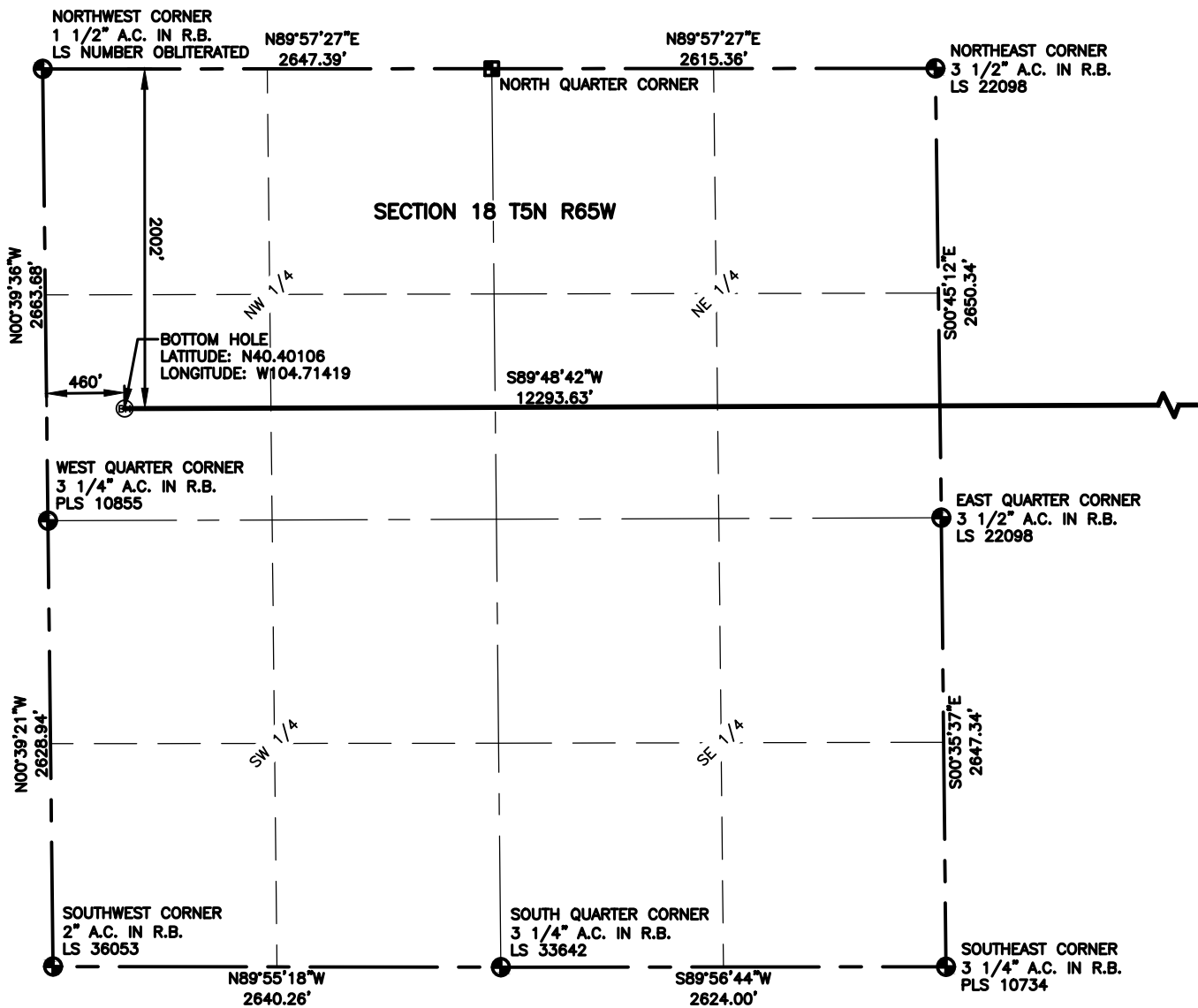
**COGCC ID**

**PROJECT - TASK NUMBER**  
0215036.00

**BOOK AND PAGE**  
MRI-04 PG-6

**SURFACE - LOCATION**  
SW /4, NW /4, SEC 15 T5N  
R65W

P:\\_Engineering\0215036 Vetting 15 H\DRAWINGS\EXHIBITS\0215036EXWP-09-B.dwg



### LEGEND

- |   |                   |
|---|-------------------|
| △ COMPUTED ALIQUOT CORNER FROM MONUMENT RECORDS | ⊙ PROPOSED WELL   |
| ⊕ ALIQUOT CORNER                                | A.C. ALUMINUM CAP |
| ■ COMPUTED ALIQUOT CORNER FROM GLO RECORDS      | R.B. RANGE BOX    |
| ⊖ BOTTOM HOLE                                   |                   |

### NOTES:

- DISTANCES ARE MEASURED PERPENDICULAR TO NEAREST SECTION LINE AND ARE SHOWN ON THE SAME SIDE OF THE SECTION LINE WHERE THE WELL IS LOCATED.
- THIS MAP DOES NOT REPRESENT A MONUMENTED BOUNDARY SURVEY. SIXTEENTH CORNER LOCATIONS ARE COMPUTED, UNLESS OTHERWISE NOTED.
- BOTTOM HOLE LOCATIONS AND HORIZONTAL COMPLETION ZONE PROVIDED BY OTHERS.



SCALE: 1"= 1000'  
U.S. SURVEY FEET



**LAMP RYNEARSON**  
& ASSOCIATES

4715 Innovation Drive 970.226.0342 | P  
Fort Collins, CO 80525 970.226.0879 | F  
www.LRA-Inc.com

PROPOSED WELL LOCATION EXHIBIT  
VT-LDS 5-16-18  
4 OF 4

**DRAWN BY**  
KJW  
**PATH\FILENAME**

**DATE**  
2/26/16

**COGCC ID**

**PROJECT - TASK NUMBER**  
0215036.00

**BOOK AND PAGE**  
MRI-04 PG-6

**SURFACE - LOCATION**  
SW /4, NW /4, SEC 15 T5N  
R65W

P:\\_Engineering\0215036 Vetting 15 H\DRAWINGS\EXHIBITS\0215036EXWP-09-C.dwg