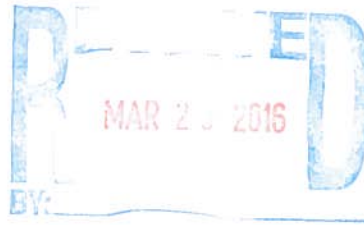




March 25, 2016

Bayswater Exploration and Production LLC
730 17TH ST STE 610
DENVER, CO 80202



RE: Rule 317.s. Statewide Fracture Stimulation Setback

VT-LDS C4-16-18

SHL: 1904' FNL, 483' FWL, SWNW Sec. 15-T5N-R65W,

Top of Producing Zone Location: 2207' FNL, 2189' FWL, Sec. 16-T5N-R65W

BHL: 2167' FNL, 460' FWL, Sec. 18-T5N-R65W

Dear Operator,

Extraction Oil & Gas, LLC (Extraction) is applying to the Colorado Oil and Gas Conversation Commission (COGCC) to drill the above referenced well at the described surface and bottom hole locations. Per COGCC Rule 317.s., no horizontal wellbore lateral shall be located less than one hundred fifty (150) feet from any existing or permitted oil or gas wellbore unless waived in writing by the operator of the encroached upon well. As currently planned, the horizontal wellbore lateral of the above well will lie within 150 feet of the wellbore of the captioned well:

State #16-6B, API # 05-123-17828, Operated by BAYSWATER EXPLORATION AND PRODUCTION LLC,
Closest distance: 124 feet


Per COGCC Rules, Extraction is required to get the offset well operator's approval in writing and a waiver of said Rule 317.s. The well is planned as above to maximize mineral recovery. Also enclosed is a Well Location Plat that shows the planned wellbore.

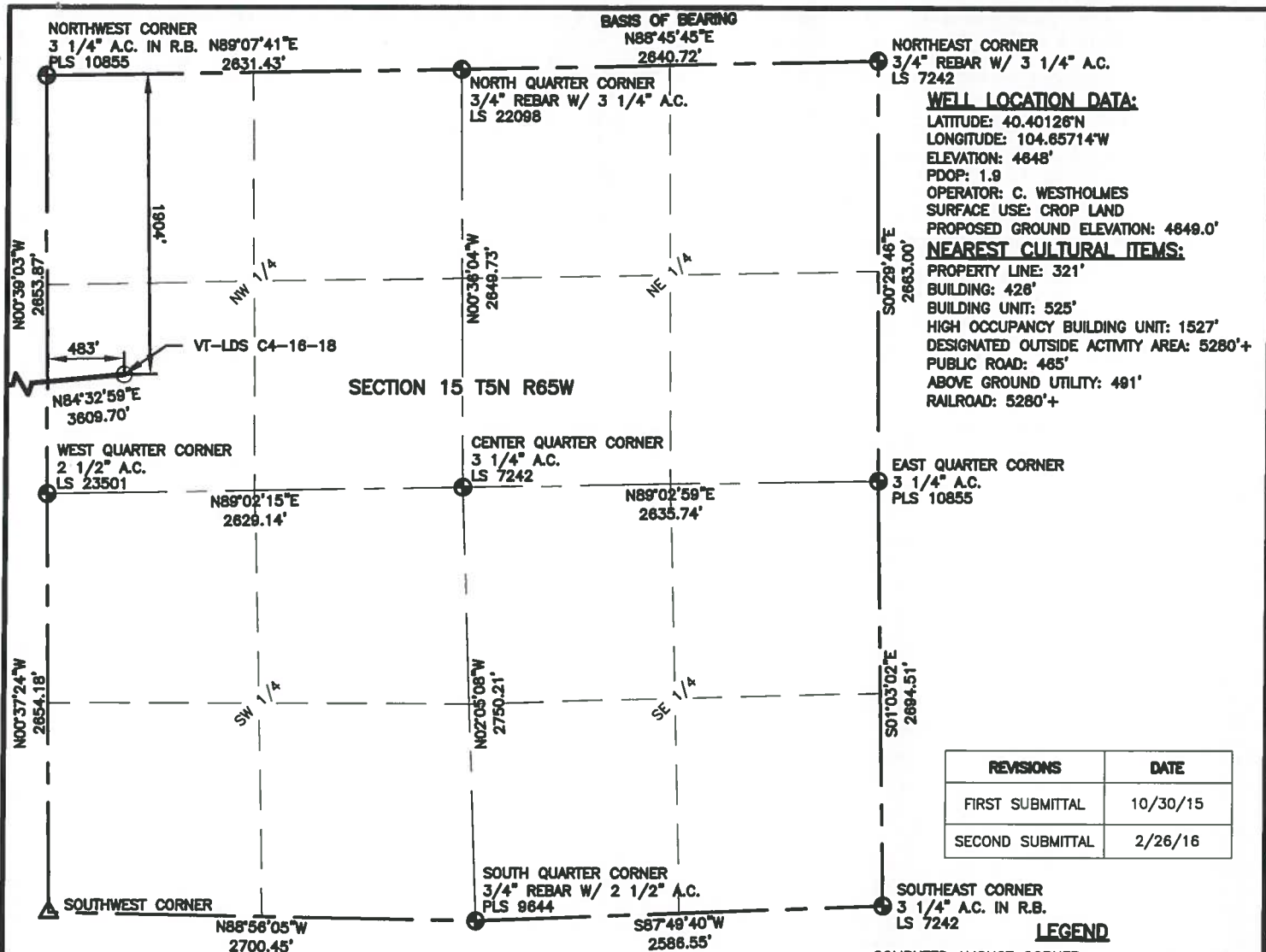
Should you find this acceptable please indicate so by signing the below section and returning the signed letter either via email to alyssa.andrews@iptenergyservices.com or by fax. Please contact the undersigned at 720-420-5749 with any questions.

Sincerely,

Alyssa Andrews
Operations Engineer
Integrated Petroleum Technologies
Consultant for Extraction Oil & Gas, LLC

I, Mark E. Brown, officer, agent, or employee of Basinwater Exp & Production
operator of the affected well, with full power to execute the following, do hereby approve of the **Extraction VT LDS**
C4-16-18 well as listed above in **Sec. 15-T5N-R65W** and grant a waiver COGCC Rule 317.s. granting that this well may
drilled as planned, in PROPOSAL #4 DATED 6/1/16

Signed  this 24 day of June, 2016



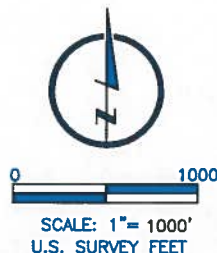
LAND SURVEYOR'S CERTIFICATION

LAMP, RYNEARSON & ASSOCIATES, INC., OF FT. COLLINS, COLORADO HAS, IN ACCORDANCE WITH A REQUEST FROM DUSTIN DYK FOR EXTRACTION OIL AND GAS, DETERMINED THE SURFACE LOCATION OF THE WELL DESIGNATED AS VT-LDS C4-16-18 TO BE 1904.00' FROM THE NORTH LINE AND 483.05' FROM THE WEST LINE OF SECTION 5, TOWNSHIP 5 NORTH, RANGE 65 WEST OF THE 6TH P.M., WELD COUNTY, COLORADO.



FRANK A. KOHL
 COLORADO PLS 37067

DATE OF SURVEY: 7/20/2015 (SECTION CONTROL)
 DATE OF SURVEY: 09/18/2015 (WELL LOCATION)



NOTES:

- DISTANCES ARE MEASURED PERPENDICULAR TO NEAREST SECTION LINE AND ARE SHOWN ON THE SAME SIDE OF THE SECTION LINE WHERE THE WELL IS LOCATED.
- THIS MAP DOES NOT REPRESENT A MONUMENTED BOUNDARY SURVEY. SIXTEENTH CORNER LOCATIONS ARE COMPUTED, UNLESS OTHERWISE NOTED.
- BOTTOM HOLE LOCATIONS AND HORIZONTAL COMPLETION ZONE PROVIDED BY OTHERS.

BASIS OF BEARING:

THE NORTH LINE OF THE NORTHEAST QUARTER OF SECTION 315-T5N-R65W BEARS N88°45'45"W BETWEEN THE NORTH QUARTER CORNER OF SECTION 15 MONUMENTED WITH 3/4" REBAR W/ 3 1/4" A.C. STAMPED "LS 22098" AND THE NORTHEAST CORNER OF SECTION 15 MONUMENTED WITH 1/4" REBAR W/ 3 1/4" A.C. STAMPED "LS 7242" BASED ON THE COLORADO NORTH 0501 STATE PLANE COORDINATE SYSTEM.

ELEVATIONS ARE BASED ON NAVD 88, AS OBSERVED FROM GPS OBSERVATIONS

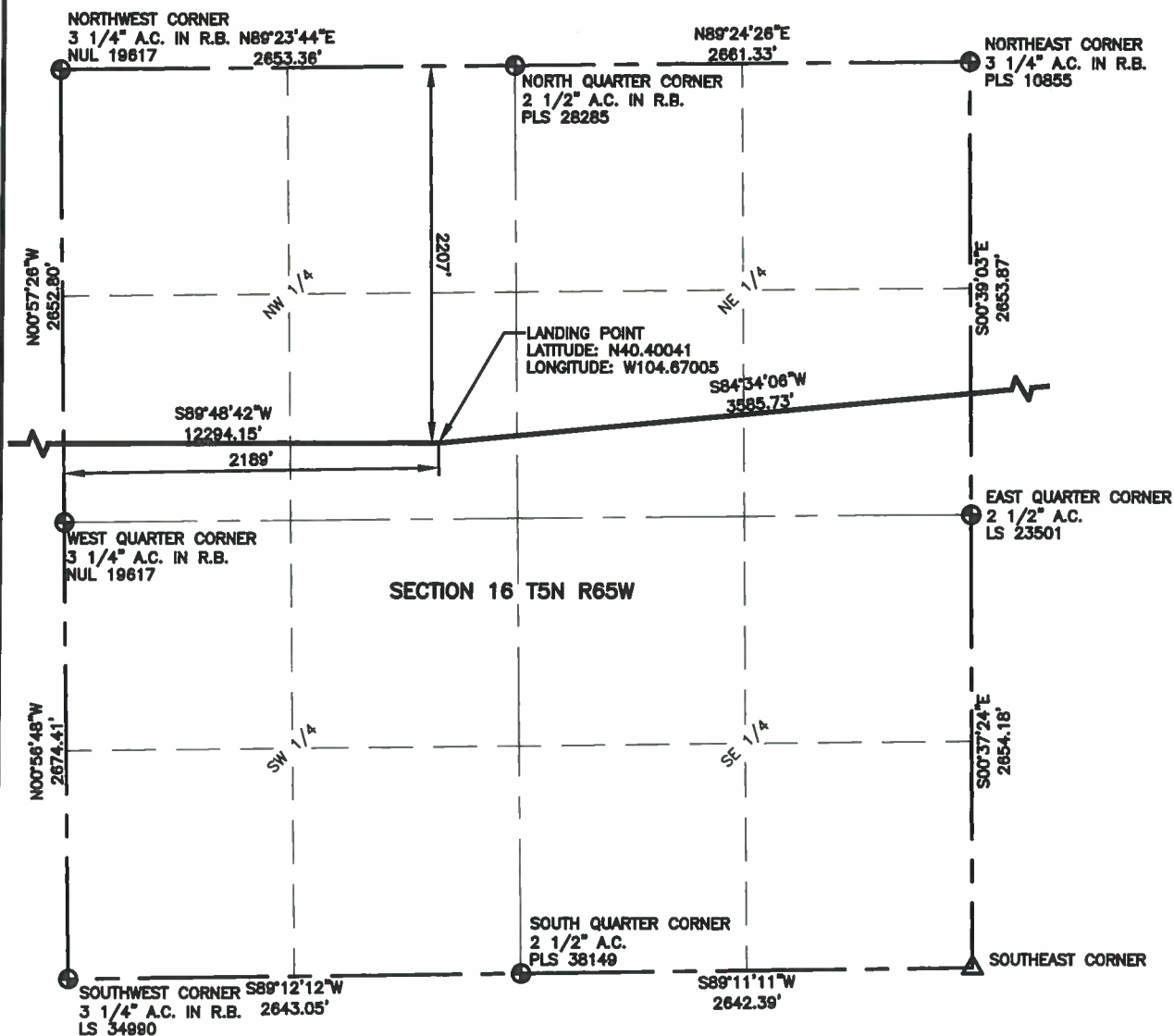


LAMP RYNEARSON & ASSOCIATES

4715 Innovation Drive 970.226.0342 | P
 Fort Collins, CO 80525 970.226.0879 | F
 www.LRA-Inc.com

PROPOSED WELL LOCATION EXHIBIT
 VT-LDS C4-16-18
 1 OF 4

DRAWN BY	DATE	COGCC ID	PROJECT - TASK NUMBER	BOOK AND PAGE	SURFACE - LOCATION
KJW	2/26/16		0215036.00	MRI-04 PG-6	SW /4, NW /4, SEC 15 T5N R65W
PATH: P:\Engineering\0215036 Vetting 15 H\DRAWINGS\EXHIBITS\0215036EXWP-10.dwg					



LEGEND

- △ COMPUTED ALIQUOT CORNER FROM MONUMENT RECORDS
- ⊙ PROPOSED WELL
- ⊕ ALIQUOT CORNER
- A.C. ALUMINUM CAP
- ⊞ COMPUTED ALIQUOT CORNER FROM GLO RECORDS
- R.B. RANGE BOX
- ⊙ BOTTOM HOLE

NOTES:

- DISTANCES ARE MEASURED PERPENDICULAR TO NEAREST SECTION LINE AND ARE SHOWN ON THE SAME SIDE OF THE SECTION LINE WHERE THE WELL IS LOCATED.
- THIS MAP DOES NOT REPRESENT A MONUMENTED BOUNDARY SURVEY. SIXTEENTH CORNER LOCATIONS ARE COMPUTED, UNLESS OTHERWISE NOTED.
- BOTTOM HOLE LOCATIONS AND HORIZONTAL COMPLETION ZONE PROVIDED BY OTHERS.



0 1000

SCALE: 1"= 1000'
U.S. SURVEY FEET

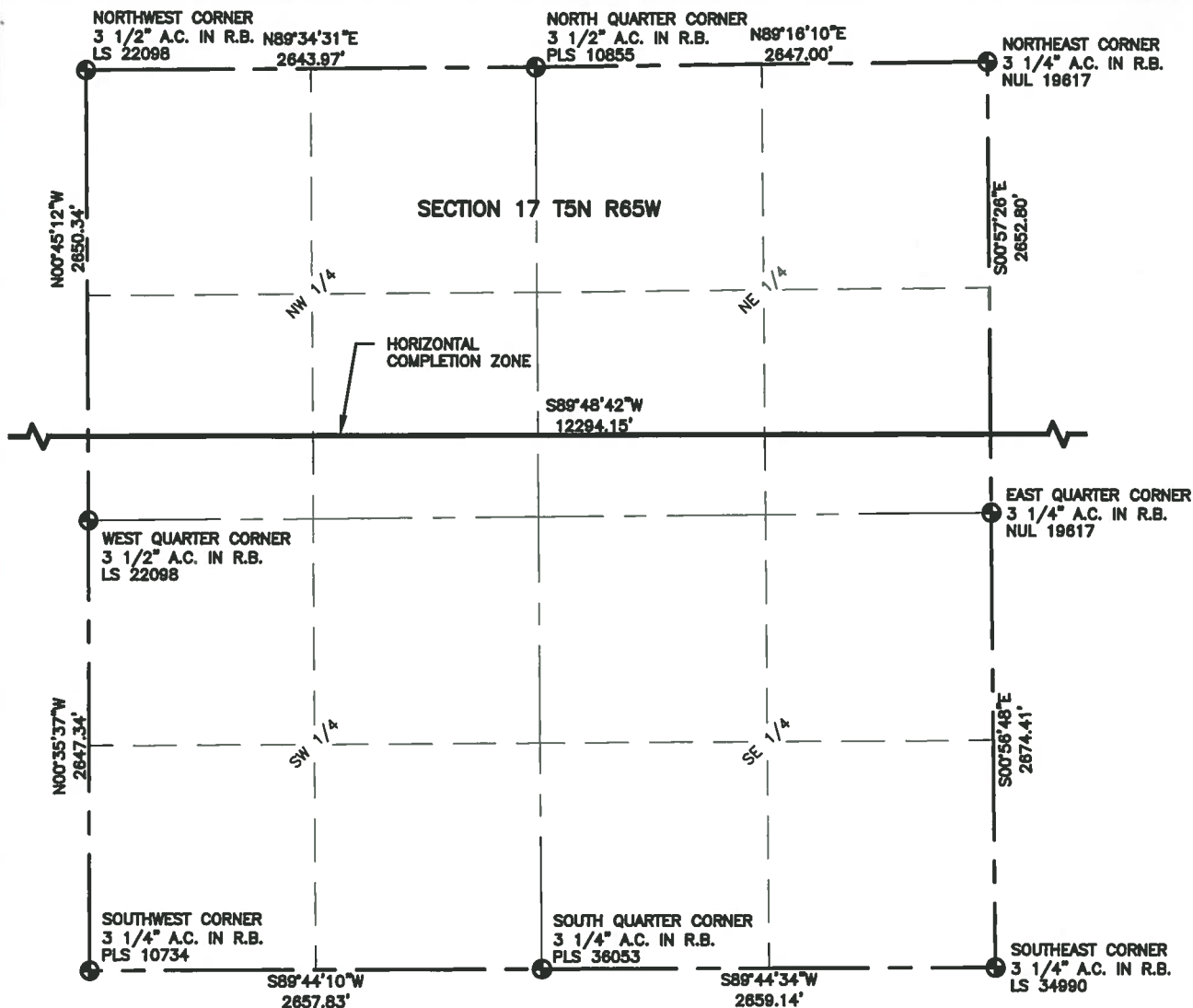


LAMP RYNEARSON
& ASSOCIATES

4715 Innovation Drive 970.226.0342 | P
Fort Collins, CO 80525 970.226.0879 | F
www.LRA-Inc.com

PROPOSED WELL LOCATION EXHIBIT
VT-LDS C4-16-18
2 OF 4

DRAWN BY	DATE	COGCC ID	PROJECT - TASK NUMBER	BOOK AND PAGE	SURFACE - LOCATION
KJW	2/26/16		0215036.00	MRI-04 PG-6	SW /4, NW /4, SEC 15 T5N
PATH\FILENAME P:\Engineering\0215036 Vetting 15 H\DRAWINGS\EXHIBITS\0215036EXWP-10-A.dwg					
R65W					



LEGEND

- △ COMPUTED ALIQUOT CORNER FROM MONUMENT RECORDS
- ⊙ PROPOSED WELL
- ⊙ ALIQUOT CORNER
- A.C. ALUMINUM CAP
- ⊙ COMPUTED ALIQUOT CORNER FROM GLO RECORDS
- R.B. RANGE BOX
- ⊙ BOTTOM HOLE

NOTES:

- DISTANCES ARE MEASURED PERPENDICULAR TO NEAREST SECTION LINE AND ARE SHOWN ON THE SAME SIDE OF THE SECTION LINE WHERE THE WELL IS LOCATED.
- THIS MAP DOES NOT REPRESENT A MONUMENTED BOUNDARY SURVEY. SIXTEENTH CORNER LOCATIONS ARE COMPUTED, UNLESS OTHERWISE NOTED.
- BOTTOM HOLE LOCATIONS AND HORIZONTAL COMPLETION ZONE PROVIDED BY OTHERS.



0 1000
SCALE: 1" = 1000'
U.S. SURVEY FEET



LAMP RYNEARSON
& ASSOCIATES

4715 Innovation Drive 970.226.0342 | P
Fort Collins, CO 80525 970.226.0879 | F
www.LRA-Inc.com

PROPOSED WELL LOCATION EXHIBIT
VT-LDS C4-16-18
3 OF 4

DRAWN BY
KJW

DATE
2/26/16

COGCC ID

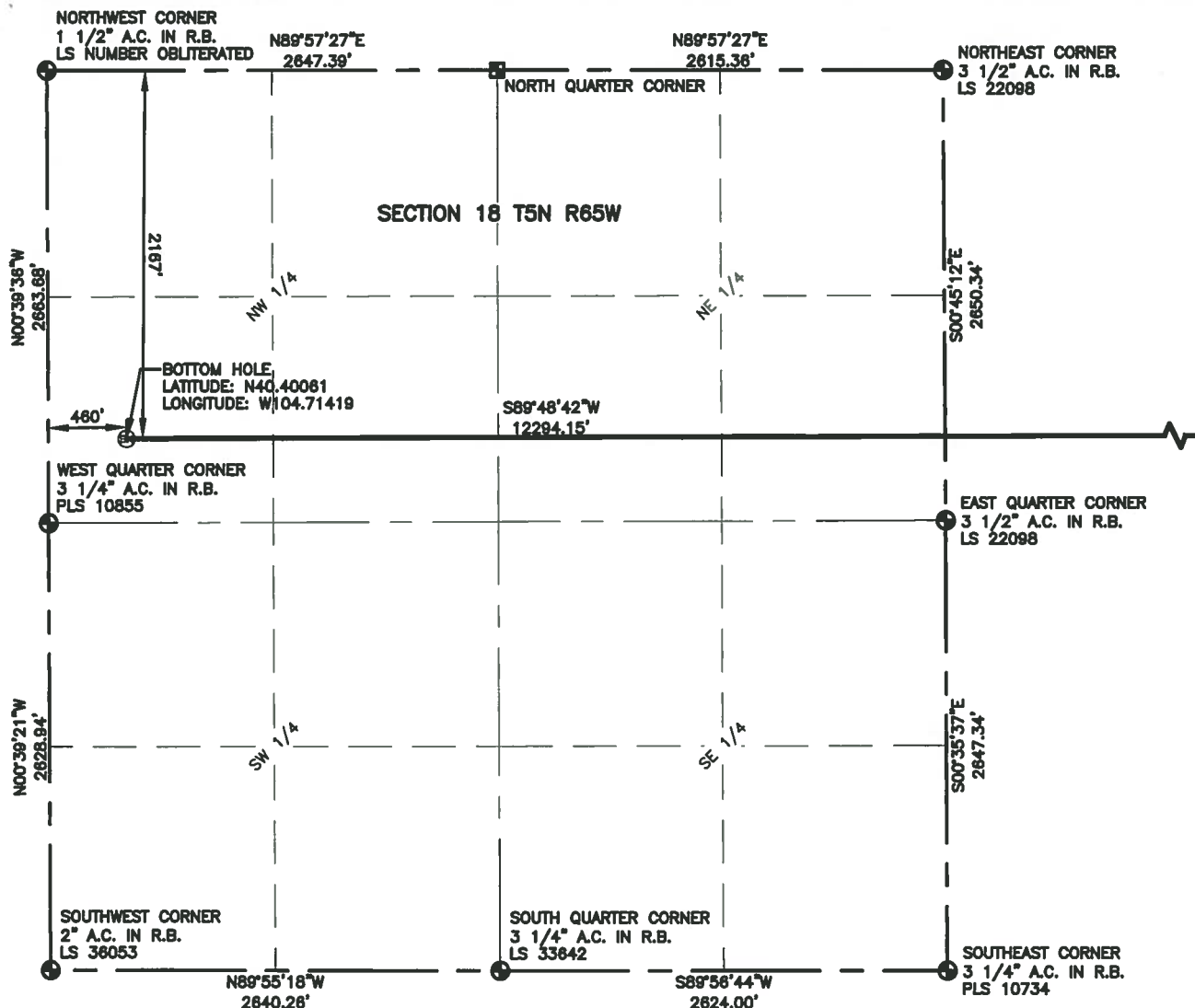
PROJECT - TASK NUMBER
0215036.00

BOOK AND PAGE
MRI-04 PG-6

SURFACE - LOCATION

PATH: P:\Engineering\0215036 Vetting 15 H\DRAWINGS\EXHIBITS\0215036EXWP-10-B.dwg

SW /4, NW /4, SEC 15 T5N
R65W



LEGEND

- △ COMPUTED ALIQUOT CORNER FROM MONUMENT RECORDS
- ⊙ PROPOSED WELL
- ⊙ ALIQUOT CORNER
- A.C. ALUMINUM CAP
- ⊙ COMPUTED ALIQUOT CORNER FROM GLO RECORDS
- R.B. RANGE BOX
- ⊙ BOTTOM HOLE

NOTES:

- DISTANCES ARE MEASURED PERPENDICULAR TO NEAREST SECTION LINE AND ARE SHOWN ON THE SAME SIDE OF THE SECTION LINE WHERE THE WELL IS LOCATED.
- THIS MAP DOES NOT REPRESENT A MONUMENTED BOUNDARY SURVEY. SIXTEENTH CORNER LOCATIONS ARE COMPUTED, UNLESS OTHERWISE NOTED.
- BOTTOM HOLE LOCATIONS AND HORIZONTAL COMPLETION ZONE PROVIDED BY OTHERS.



0 1000

SCALE: 1" = 1000'
U.S. SURVEY FEET



LAMP RYNEARSON
& ASSOCIATES

4715 Innovation Drive 970.226.0342 | P
Fort Collins, CO 80525 970.226.0879 | F
www.LRA-Inc.com

PROPOSED WELL LOCATION EXHIBIT
VT-LDS C4-16-18
4 OF 4

DRAWN BY
KJW

DATE
2/26/16

COGCC ID

PROJECT - TASK NUMBER
0215036.00

BOOK AND PAGE
MRI-04 PG-6

SURFACE - LOCATION

PATH/FILENAME

P:\Engineering\0215036 Vetting 15 H\DRAWINGS\EXHIBITS\0215036EXWP-10-C.dwg

SW /4, NW /4, SEC 15 T5N
R65W