



#### LEGEND

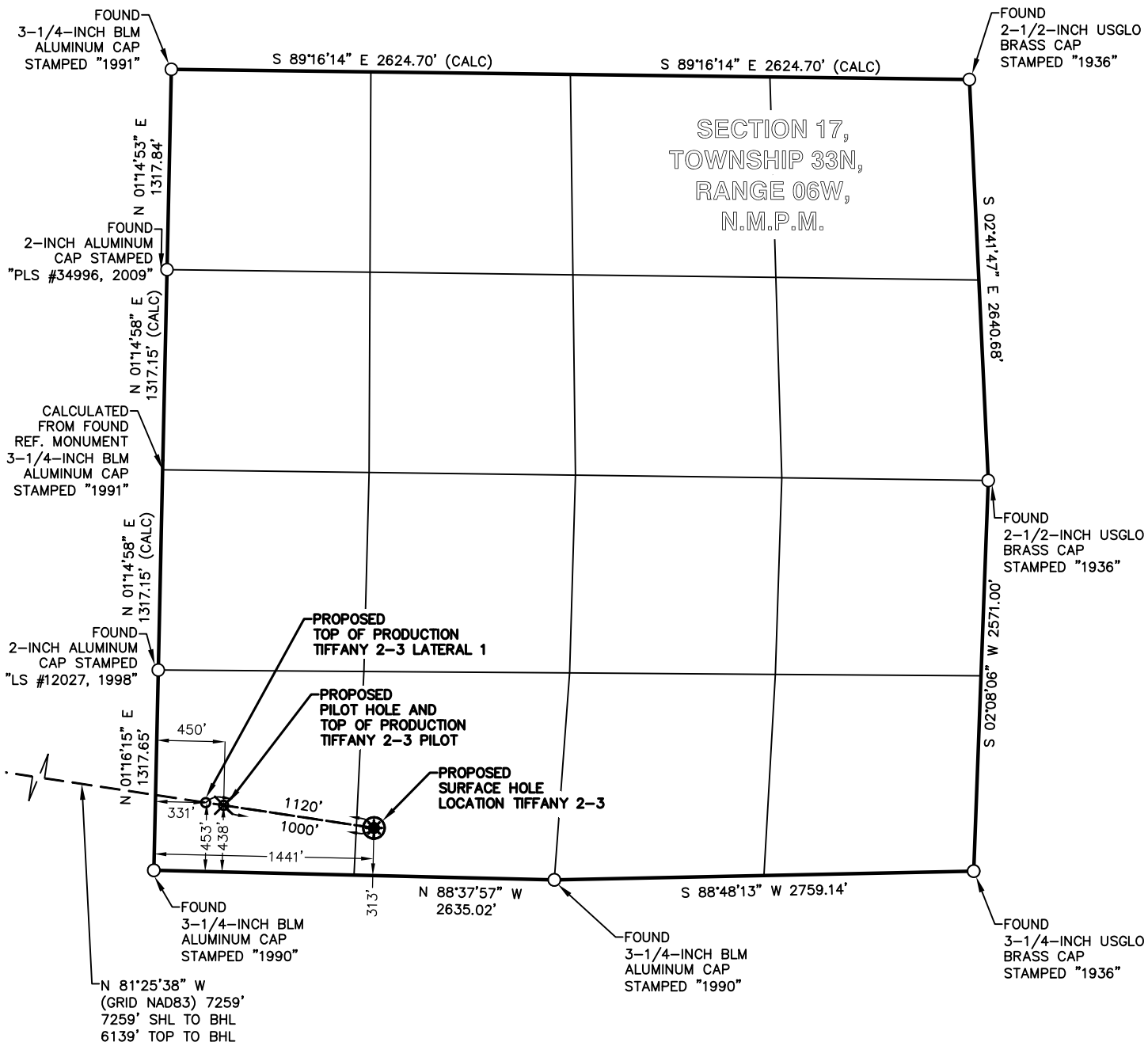
FOUND MONUMENT ○

PROPOSED SURFACE HOLE LOCATION ⊗

PROPOSED BOTTOM HOLE LOCATION ×

0 500 1000 2000

GRAPHIC SCALE IN FEET



## SURVEY NOTES

1. SEE SHEET 10 OF 10 FOR SURVEY NOTES, COORDINATE TABLE, AND SURVEYOR'S CERTIFICATE.



BP AMERICA  
PRODUCTION COMPANY  
US LOWER 48 ONSHORE

WELL LOCATION PLAT

TIFFANY 2-3

PART OF  
SECTION 17 AND SECTION 18, TOWNSHIP 33N,  
RANGE 06W, N.M.P.M. AND SECTION 13,  
TOWNSHIP 33N, RANGE 07W, N.M.P.M.  
LA PLATA COUNTY, COLORADO

DRAWN BY  
CFW/RLM

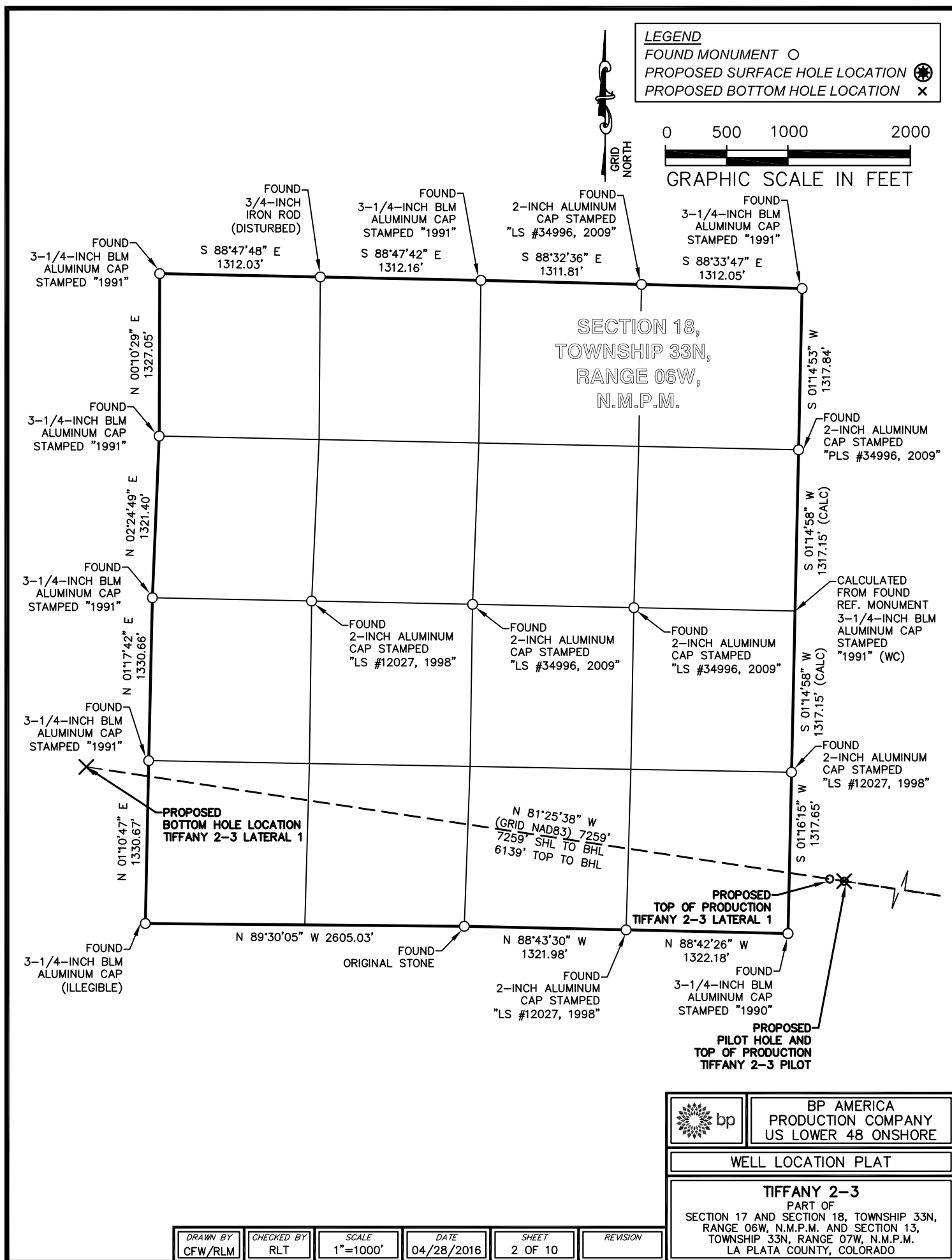
CHECKED BY  
RLT

SCALE  
1"=1000'

DATE  
04/28/2016

SHEET  
1 OF 10

REVISION



# LEGEND

FOUND MONUMENT ○

PROPOSED SURFACE HOLE LOCATION \*

PROPOSED BOTTOM HOLE LOCATION x

0 500 1000 2000

GRAPHIC SCALE IN FEET

GRID  
NORTH

CALCULATED FROM FOUND  
REF. MONUMENT 3-1/4-INCH  
BLM ALUMINUM CAP  
STAMPED "2006"

S 88°40'41" E 2632.08' (CALC)

FOUND  
3-1/4-INCH BLM  
ALUMINUM CAP  
STAMPED "1991"

SECTION 13,  
TOWNSHIP 33N,  
RANGE 07W,  
N.M.P.M.

FOUND  
3-1/4-INCH SUIR  
ALUMINUM CAP  
STAMPED "1992"

FOUND  
3-1/4-INCH BLM  
ALUMINUM CAP  
STAMPED "1991"

FOUND  
3-1/4-INCH SUIR  
ALUMINUM CAP  
STAMPED "1992"

FOUND  
3-1/4-INCH SUIR  
ALUMINUM CAP  
STAMPED "1992"

FOUND  
3-1/4-INCH BLM  
ALUMINUM CAP  
STAMPED "1991"

FOUND  
3-1/4-INCH SUIR  
ALUMINUM CAP  
STAMPED "1992"

N 81°25'38" W  
(GRID NAD83) 7259'  
7259' SHL TO BHL  
6139' TOP TO BHL

FOUND  
3-1/4-INCH BLM  
ALUMINUM CAP  
STAMPED "1991"

PROPOSED  
BOTTOM HOLE LOCATION  
TIFFANY 2-3 LATERAL 1

FOUND  
3-1/4-INCH BLM  
ALUMINUM CAP  
STAMPED "1991"

FOUND  
3-1/4-INCH BLM  
ALUMINUM CAP  
STAMPED "1991"

FOUND  
3-1/4-INCH BLM  
ALUMINUM CAP  
STAMPED "1991"

FOUND  
3-1/4-INCH BLM  
ALUMINUM CAP  
(ILLEGIBLE)



BP AMERICA  
PRODUCTION COMPANY  
US LOWER 48 ONSHORE

WELL LOCATION PLAT

TIFFANY 2-3

PART OF  
SECTION 17 AND SECTION 18, TOWNSHIP 33N,  
RANGE 06W, N.M.P.M. AND SECTION 13,  
TOWNSHIP 33N, RANGE 07W, N.M.P.M.  
LA PLATA COUNTY, COLORADO

DRAWN BY  
CFW/RLM

CHECKED BY  
RLT

SCALE  
1"=1000'

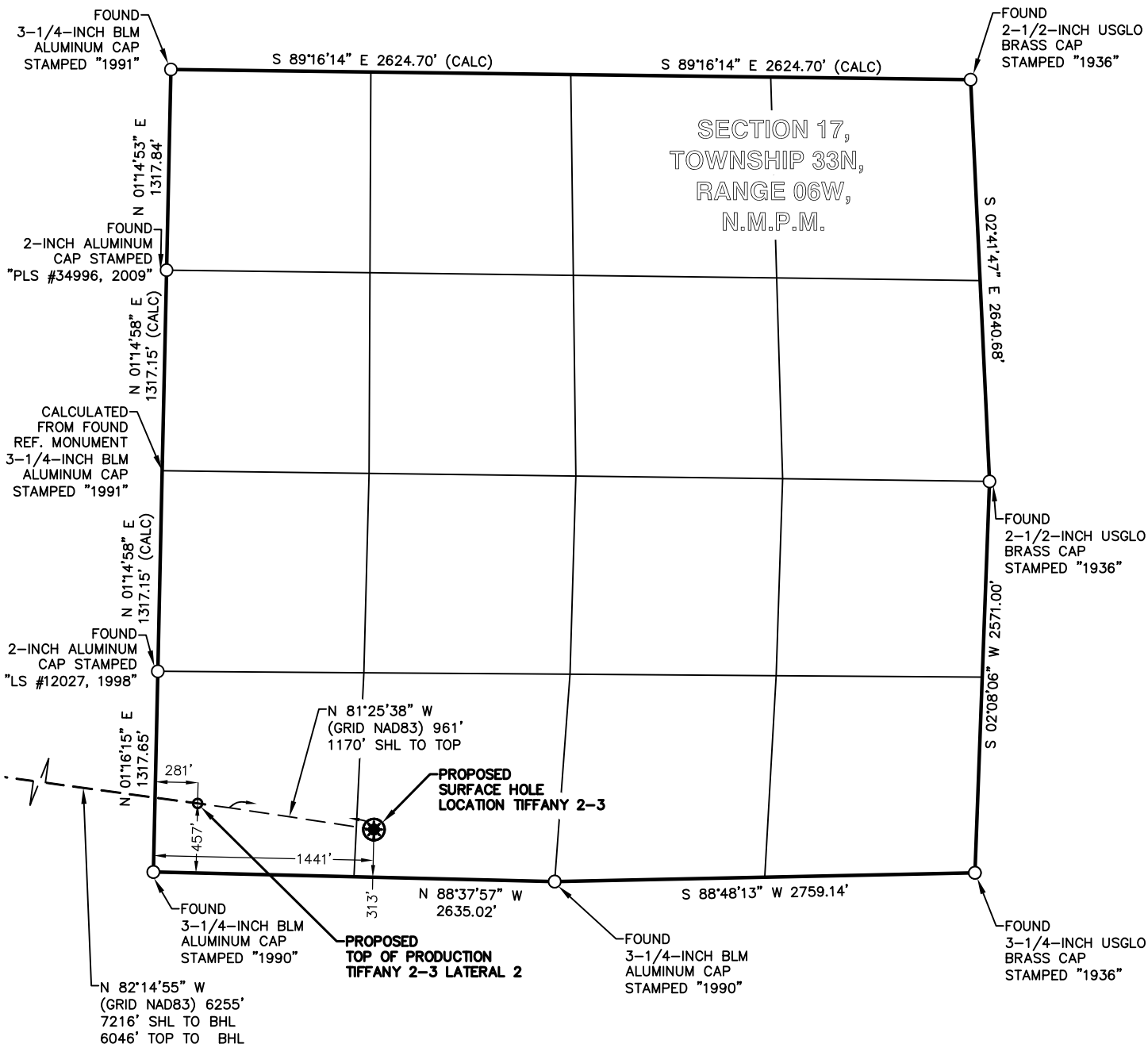
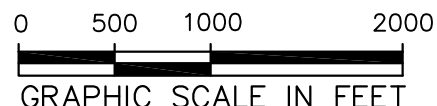
DATE  
04/28/2016


SHEET  
3 OF 10

REVISION



**LEGEND**  
FOUND MONUMENT ○  
PROPOSED SURFACE HOLE LOCATION ●  
PROPOSED BOTTOM HOLE LOCATION ×



	BP AMERICA PRODUCTION COMPANY US LOWER 48 ONSHORE
	WELL LOCATION PLAT
	<b>TIFFANY 2-3</b> PART OF SECTION 17 AND SECTION 18, TOWNSHIP 33N, RANGE 06W, N.M.P.M. AND SECTION 13, TOWNSHIP 33N, RANGE 07W, N.M.P.M. LA PLATA COUNTY, COLORADO

DRAWN BY CFW/RLM	CHECKED BY RLT	SCALE 1"=1000'	DATE 04/28/2016	SHEET 4 OF 10	REVISION
---------------------	-------------------	-------------------	--------------------	------------------	----------

# LEGEND

FOUND MONUMENT ○

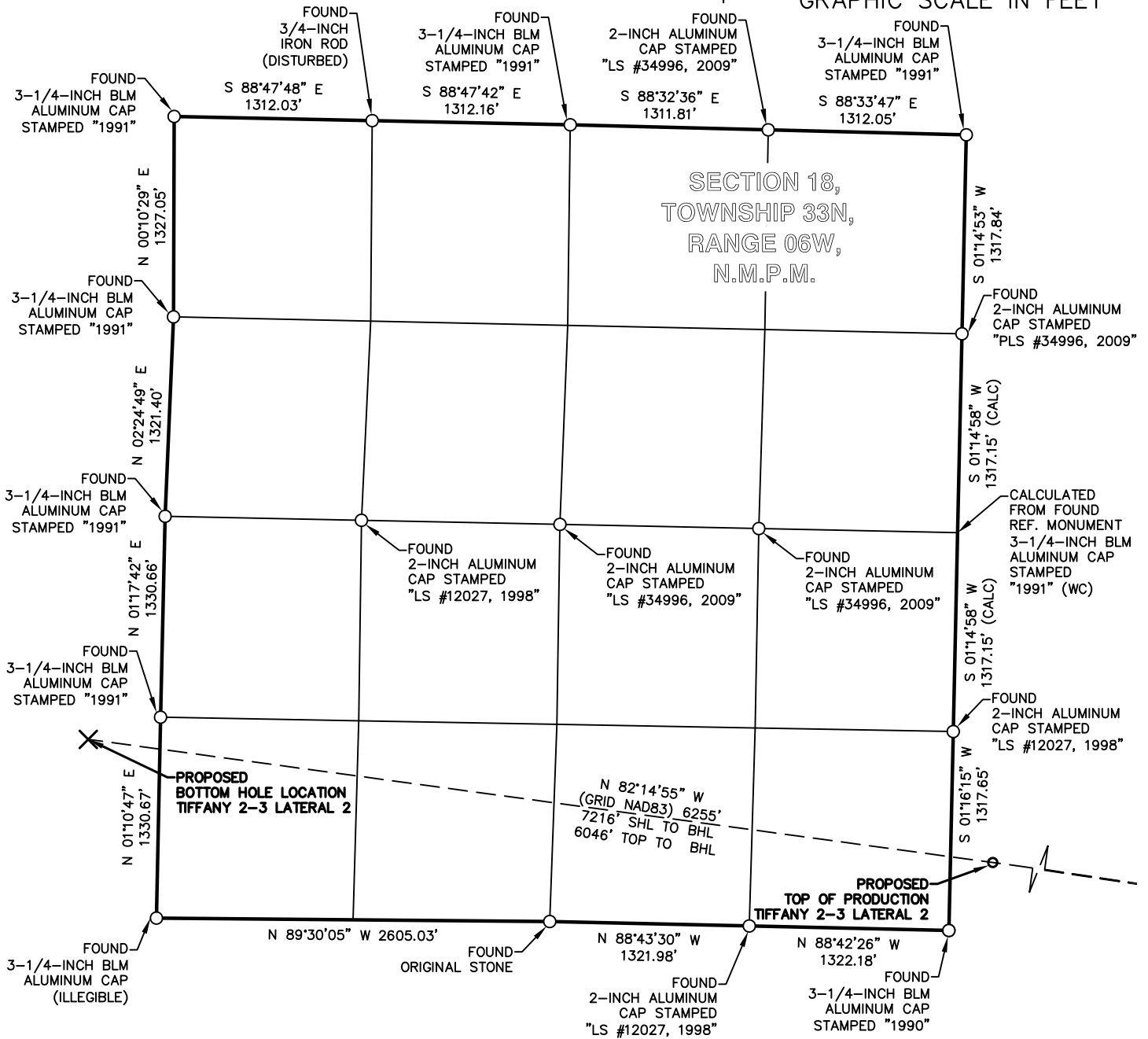
PROPOSED SURFACE HOLE LOCATION ⊗

PROPOSED BOTTOM HOLE LOCATION ×

0 500 1000 2000

GRAPHIC SCALE IN FEET

SECTION 18,  
TOWNSHIP 33N,  
RANGE 06W,  
N.M.P.M.



BP AMERICA  
PRODUCTION COMPANY  
US LOWER 48 ONSHORE

WELL LOCATION PLAT

TIFFANY 2-3

PART OF  
SECTION 17 AND SECTION 18, TOWNSHIP 33N,  
RANGE 06W, N.M.P.M. AND SECTION 13,  
TOWNSHIP 33N, RANGE 07W, N.M.P.M.  
LA PLATA COUNTY, COLORADO

DRAWN BY  
CFW/RLM

CHECKED BY  
RLT

SCALE  
1"=1000'

DATE  
04/28/2016

SHEET  
5 OF 10

REVISION

**LEGEND**

FOUND MONUMENT ○

PROPOSED SURFACE HOLE LOCATION \*

PROPOSED BOTTOM HOLE LOCATION x



0 500 1000 2000

GRAPHIC SCALE IN FEET

CALCULATED FROM FOUND  
REF. MONUMENT 3-1/4-INCH  
BLM ALUMINUM CAP  
STAMPED "2006"

S 88°40'41" E 2632.08' (CALC)

FOUND  
3-1/4-INCH BLM  
ALUMINUM CAP  
STAMPED "1991"

SECTION 13,  
TOWNSHIP 33N,  
RANGE 07W,  
N.M.P.M.

FOUND  
3-1/4-INCH SUIR  
ALUMINUM CAP  
STAMPED "1992"

FOUND  
3-1/4-INCH BLM  
ALUMINUM CAP  
STAMPED "1991"

FOUND  
3-1/4-INCH SUIR  
ALUMINUM CAP  
STAMPED "1992"

FOUND  
3-1/4-INCH SUIR  
ALUMINUM CAP  
STAMPED "1992"

FOUND  
3-1/4-INCH BLM  
ALUMINUM CAP  
STAMPED "1991"

FOUND  
3-1/4-INCH SUIR  
ALUMINUM CAP  
STAMPED "1992"

N 82°14'55" W  
(GRID NAD83) 6255'  
7216' SHL TO BHL  
6046' TOP TO BHL

FOUND  
3-1/4-INCH BLM  
ALUMINUM CAP  
STAMPED "1991"

PROPOSED  
BOTTOM HOLE LOCATION  
TIFFANY 2-3 LATERAL 2

FOUND  
3-1/4-INCH BLM  
ALUMINUM CAP  
STAMPED "1991"

FOUND  
3-1/4-INCH BLM  
ALUMINUM CAP  
STAMPED "1991"

FOUND  
3-1/4-INCH BLM  
ALUMINUM CAP  
STAMPED "1991"

FOUND  
3-1/4-INCH BLM  
ALUMINUM CAP  
STAMPED "1991"

FOUND  
3-1/4-INCH BLM  
ALUMINUM CAP  
STAMPED "1991"

FOUND  
3-1/4-INCH BLM  
ALUMINUM CAP  
STAMPED "1991"

FOUND  
3-1/4-INCH BLM  
ALUMINUM CAP  
STAMPED "1991"

FOUND  
3-1/4-INCH BLM  
ALUMINUM CAP  
STAMPED "1991"

FOUND  
3-1/4-INCH BLM  
ALUMINUM CAP  
STAMPED "1991"

FOUND  
3-1/4-INCH BLM  
ALUMINUM CAP  
STAMPED "1991"

FOUND  
3-1/4-INCH BLM  
ALUMINUM CAP  
STAMPED "1991"

FOUND  
3-1/4-INCH BLM  
ALUMINUM CAP  
STAMPED "1991"

FOUND  
3-1/4-INCH BLM  
ALUMINUM CAP  
STAMPED "1991"



BP AMERICA  
PRODUCTION COMPANY  
US LOWER 48 ONSHORE

WELL LOCATION PLAT

TIFFANY 2-3

PART OF  
SECTION 17 AND SECTION 18, TOWNSHIP 33N,  
RANGE 06W, N.M.P.M. AND SECTION 13,  
TOWNSHIP 33N, RANGE 07W, N.M.P.M.  
LA PLATA COUNTY, COLORADO

DRAWN BY  
CFW/RLM

CHECKED BY  
RLT

SCALE  
1"=1000'

DATE  
04/28/2016

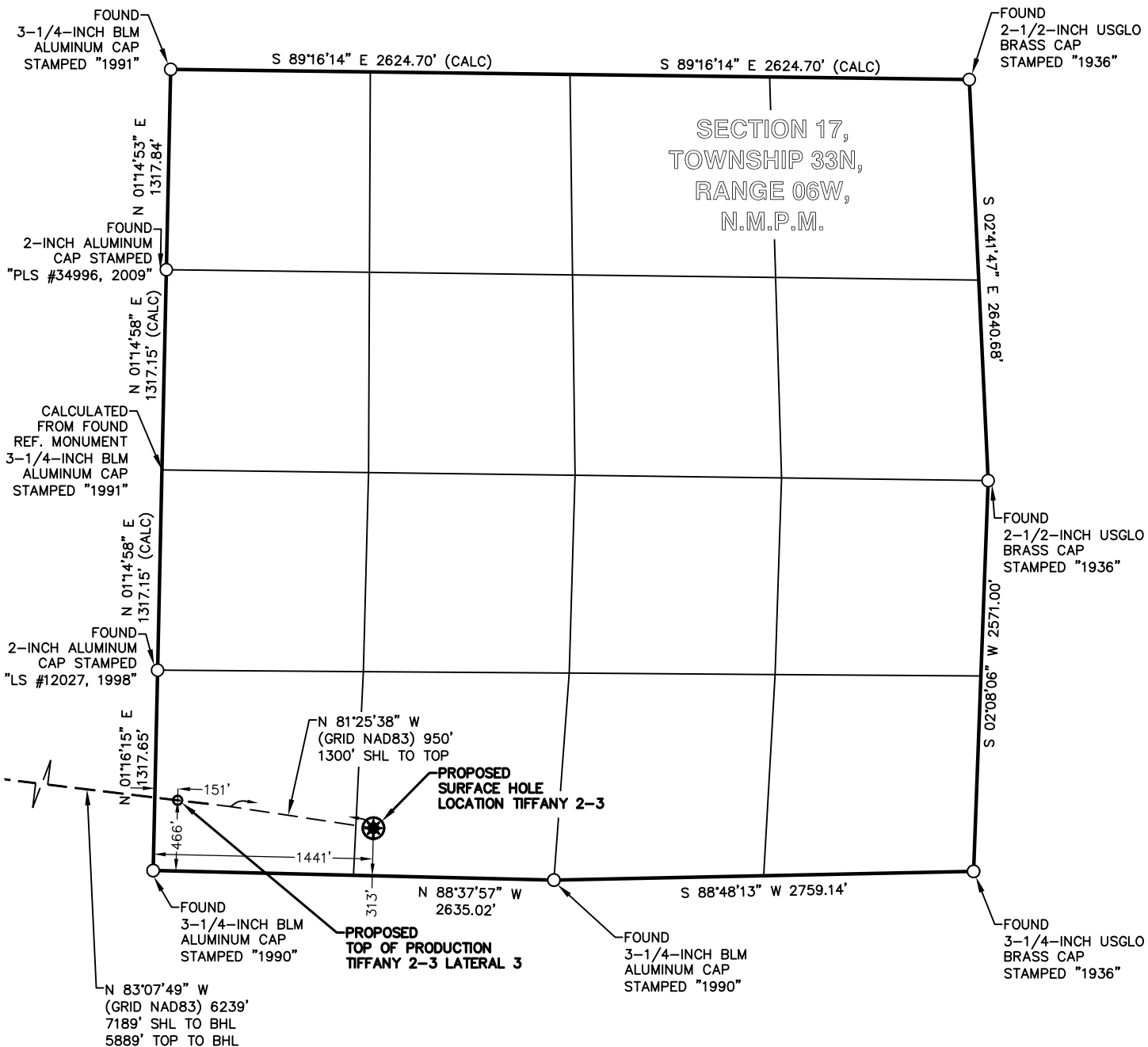
SHEET  
6 OF 10

REVISION



**LEGEND**  
FOUND MONUMENT ○  
PROPOSED SURFACE HOLE LOCATION ●  
PROPOSED BOTTOM HOLE LOCATION ×

0 500 1000 2000  
GRAPHIC SCALE IN FEET



BP AMERICA  
PRODUCTION COMPANY  
US LOWER 48 ONSHORE

WELL LOCATION PLAT

TIFFANY 2-3

PART OF  
SECTION 17 AND SECTION 18, TOWNSHIP 33N,  
RANGE 06W, N.M.P.M. AND SECTION 13,  
TOWNSHIP 33N, RANGE 07W, N.M.P.M.  
LA PLATA COUNTY, COLORADO

DRAWN BY  
CFW/RLM

CHECKED BY  
RLT

SCALE  
1"=1000'

DATE  
04/28/2016

SHEET  
7 OF 10

REVISION

# LEGEND

FOUND MONUMENT ○

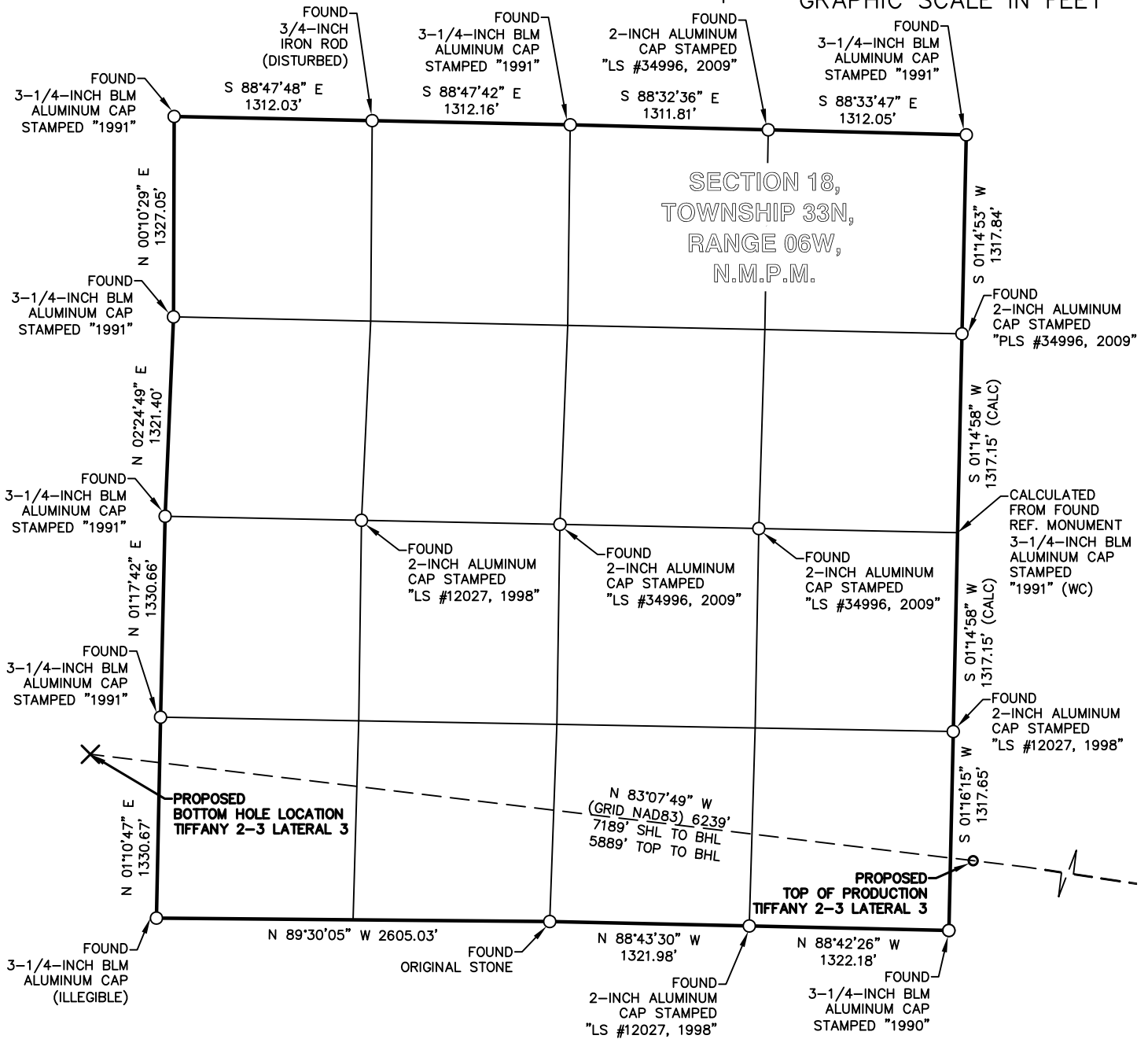
PROPOSED SURFACE HOLE LOCATION ⊗

PROPOSED BOTTOM HOLE LOCATION ×

0 500 1000 2000

GRAPHIC SCALE IN FEET

SECTION 18,  
TOWNSHIP 33N,  
RANGE 06W,  
N.M.P.M.



BP AMERICA  
PRODUCTION COMPANY  
US LOWER 48 ONSHORE

WELL LOCATION PLAT

TIFFANY 2-3

PART OF  
SECTION 17 AND SECTION 18, TOWNSHIP 33N,  
RANGE 06W, N.M.P.M. AND SECTION 13,  
TOWNSHIP 33N, RANGE 07W, N.M.P.M.  
LA PLATA COUNTY, COLORADO

DRAWN BY  
CFW/RLM

CHECKED BY  
RLT

SCALE  
1"=1000'

DATE  
04/28/2016

SHEET  
8 OF 10

REVISION



# LEGEND

FOUND MONUMENT ○

PROPOSED SURFACE HOLE LOCATION \*

PROPOSED BOTTOM HOLE LOCATION x



0 500 1000 2000

GRAPHIC SCALE IN FEET

CALCULATED FROM FOUND  
REF. MONUMENT 3-1/4-INCH  
BLM ALUMINUM CAP  
STAMPED "2006"

S 88°40'15" E 2632.56' (CALC)

S 88°40'41" E 2632.08' (CALC)

SECTION 13,  
TOWNSHIP 33N,  
RANGE 07W,  
N.M.P.M.

FOUND  
3-1/4-INCH SUIR  
ALUMINUM CAP  
STAMPED "1992"

FOUND  
3-1/4-INCH SUIR  
ALUMINUM CAP  
STAMPED "1992"

FOUND  
3-1/4-INCH SUIR  
ALUMINUM CAP  
STAMPED "1992"

FOUND  
3-1/4-INCH SUIR  
ALUMINUM CAP  
STAMPED "1992"

N 83°07'49" W  
(GRID NAD83) 6239'  
7189' SHL TO BHL  
5889' TOP TO BHL

PROPOSED  
BOTTOM HOLE LOCATION  
TIFFANY 2-3 LATERAL 3

FOUND  
3-1/4-INCH BLM  
ALUMINUM CAP  
STAMPED "1991"

FOUND  
3-1/4-INCH BLM  
ALUMINUM CAP  
STAMPED "1991"

FOUND  
3-1/4-INCH BLM  
ALUMINUM CAP  
STAMPED "1991"

FOUND  
3-1/4-INCH BLM  
ALUMINUM CAP  
STAMPED "1991"

FOUND  
3-1/4-INCH BLM  
ALUMINUM CAP  
(ILLEGIBLE)

N 01°36'56" E  
1320.29' (CALC)

N 01°39'08" E  
1320.00'

N 01°40'04" E  
1319.33'

N 01°38'24" E  
1320.11'

N 88°21'03" W  
1324.95'

N 88°21'21" W  
1324.60'

N 88°21'11" W  
1325.34'

N 88°21'25" W  
1324.81'

S 00°10'29" W  
1327.05'

S 02°24'49" W  
1321.40'

S 01°17'42" W  
1330.66'

S 01°10'47" W  
1330.67'



BP AMERICA  
PRODUCTION COMPANY  
US LOWER 48 ONSHORE

WELL LOCATION PLAT

TIFFANY 2-3

PART OF  
SECTION 17 AND SECTION 18, TOWNSHIP 33N,  
RANGE 06W, N.M.P.M. AND SECTION 13,  
TOWNSHIP 33N, RANGE 07W, N.M.P.M.  
LA PLATA COUNTY, COLORADO

DRAWN BY  
CFW/RLM

CHECKED BY  
RLT

SCALE  
1"=1000'

DATE  
04/28/2016

SHEET  
9 OF 10

REVISION

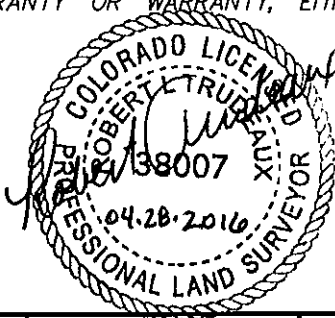
TIFFANY 2-3	CSZ NAD'83	NAD'83	TIES	ELEVATION
PROPOSED SURFACE HOLE LOCATION (SHL)	N (Y) = 1,163,311.22' E (X) = 2,408,584.27'	LAT. = 37.09754164°N LON. = 107.52786806°W	FSL = 313' FWL = 1441'	EXISTING GROUND 6667.97'
PROPOSED PILOT HOLE / TOP OF PRODUCTION (TOP) PILOT	N (Y) = 1,163,460.29' E (X) = 2,407,595.44'	LAT. = 37.09789195°N LON. = 107.53126864°W	FSL = 438' FWL = 450'	PROPOSED GRADE 6669.75'
PROPOSED TOP OF PRODUCTION (TOP) LAT 1	N (Y) = 1,163,478.11' E (X) = 2,407,477.22'	LAT. = 37.09793382°N LON. = 107.53167520°W	FSL = 453' FWL = 331'	
PROPOSED BOTTOM HOLE LOCATION (BHL) LAT 1	N (Y) = 1,164,393.34' E (X) = 2,401,406.05'	LAT. = 37.10008230°N LON. = 107.55255465°W	FSL = 1264' FEL = 508'	
PROPOSED TOP OF PRODUCTION (TOP) LAT 2	N (Y) = 1,163,482.65' E (X) = 2,407,427.00'	LAT. = 37.09794328°N LON. = 107.53184768°W	FSL = 457' FWL = 281'	
PROPOSED BOTTOM HOLE LOCATION (BHL) LAT 2	N (Y) = 1,164,298.08' E (X) = 2,401,436.47'	LAT. = 37.09982258°N LON. = 107.55244320°W	FSL = 1170' FEL = 476'	
PROPOSED TOP OF PRODUCTION (TOP) LAT 3	N (Y) = 1,163,494.71' E (X) = 2,407,297.27'	LAT. = 37.09796865°N LON. = 107.53229327°W	FSL = 466' FWL = 151'	
PROPOSED BOTTOM HOLE LOCATION (BHL) LAT 3	N (Y) = 1,164,199.09' E (X) = 2,401,450.65'	LAT. = 37.09955164°N LON. = 107.55238713°W	FSL = 1071' FEL = 459'	

## SURVEY NOTES

1. BEARING BASIS FOR THIS SURVEY IS BASED ON THE NORTH AMERICAN DATUM OF 1983, COLORADO STATE PLANE COORDINATE SYSTEM, COLORADO SOUTH, ZONE 0503.
2. ELEVATION BASIS FOR THIS SURVEY IS BASED ON THE NORTH AMERICAN VERTICAL DATUM OF 1988 (GEOID12A).
3. SURVEYED IN THE FIELD ON 04/16/2016.
4. BEARINGS AND DISTANCE SHOWN ARE MEASURED IN THE FIELD UNLESS OTHERWISE NOTED.
5. ALL MEASURED DISTANCES SHOWN ARE GRID USING A COMBINED SCALE FACTOR 0.99971262.
6. GPS INSTRUMENT OPERATOR: BRIAN BONIFACE
7. GPS PDOP VALUE: 2.0

## SURVEYOR'S CERTIFICATE

I, ROBERT L. TRUDEAUX, A PROFESSIONAL LAND SURVEYOR IN THE STATE OF COLORADO, DO HEREBY CERTIFY THAT THIS PLAT WAS PREPARED FROM AN ACTUAL SURVEY PERFORMED BY ME OR UNDER MY DIRECT RESPONSIBILITY, SUPERVISION AND CHECKING, AND IS TRUE AND CORRECT TO THE BEST OF MY KNOWLEDGE AND BELIEF BASED ON THE STANDARDS OF CARE OF PROFESSIONAL LAND SURVEYORS PRACTICING IN THE STATE OF COLORADO. THIS DOES NOT REPRESENT A LAND SURVEY PLAT, IMPROVEMENT SURVEY PLAT, OR MONUMENTED LAND SURVEY AS DEFINED BY COLORADO REVISED STATUTES 38-51-102 AND CANNOT BE RELIED UPON TO DETERMINE OWNERSHIP. THIS SURVEY IS NOT A GUARANTY OR WARRANTY, EITHER EXPRESSED OR IMPLIED.



	BP AMERICA PRODUCTION COMPANY US LOWER 48 ONSHORE
	WELL LOCATION PLAT
TIFFANY 2-3 PART OF SECTION 17 AND SECTION 18, TOWNSHIP 33N, RANGE 06W, N.M.P.M. AND SECTION 13, TOWNSHIP 33N, RANGE 07W, N.M.P.M. LA PLATA COUNTY, COLORADO	

DRAWN BY CFW/RLM	CHECKED BY RLT	SCALE N/A	DATE 04/28/2016	SHEET 10 OF 10	REVISION
---------------------	-------------------	--------------	--------------------	-------------------	----------