

LEGEND

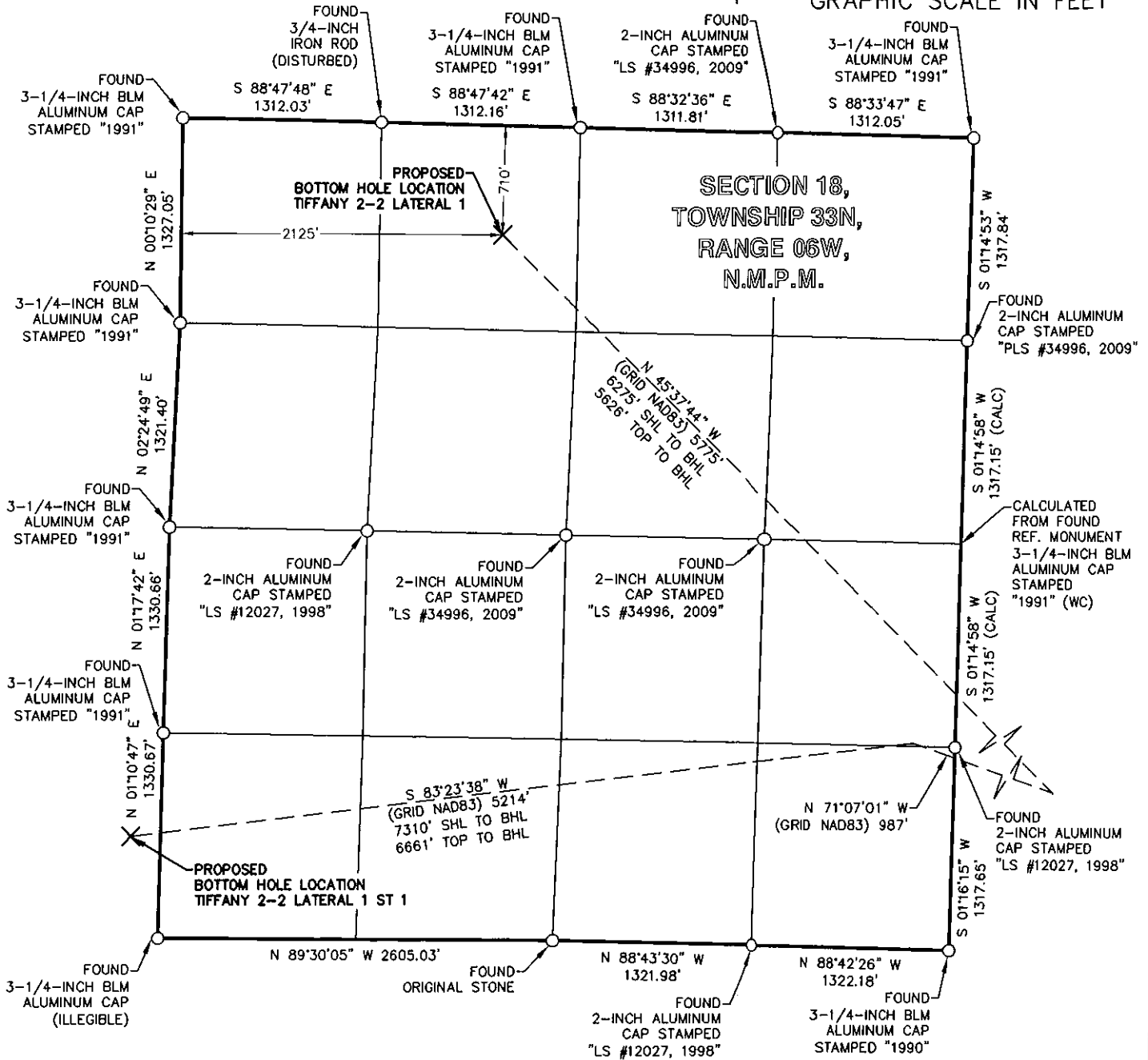
FOUND MONUMENT O

PROPOSED SURFACE HOLE LOCATION *

PROPOSED BOTTOM HOLE LOCATION X

0 500 1000 2000

GRAPHIC SCALE IN FEET



BP AMERICA
PRODUCTION COMPANY
US LOWER 48 ONSHORE

WELL LOCATION PLAT

TIFFANY 2-2

PART OF
SECTION 17 AND SECTION 18, TOWNSHIP 33N,
RANGE 06W, N.M.P.M. AND SECTION 13,
TOWNSHIP 33N, RANGE 07W, N.M.P.M.
LA PLATA COUNTY, COLORADO

DRAWN BY
CFW/RLM

CHECKED BY
RLT

SCALE
1"=1000'

DATE
06/02/2016

SHEET
2 OF 10

REVISION

LEGEND

FOUND MONUMENT O

PROPOSED SURFACE HOLE LOCATION *

PROPOSED BOTTOM HOLE LOCATION X

0 500 1000 2000

GRAPHIC SCALE IN FEET

CALCULATED FROM FOUND
REF. MONUMENT 3-1/4-INCH
BLM ALUMINUM CAP
STAMPED "2006"

S 88°40'41" E 2632.08' (CALC)

FOUND
3-1/4-INCH BLM
ALUMINUM CAP
STAMPED "1991"

SECTION 13,
TOWNSHIP 33N,
RANGE 07W,
N.M.P.M.

FOUND
3-1/4-INCH SUIR
ALUMINUM CAP
STAMPED "1992"

FOUND
3-1/4-INCH SUIR
ALUMINUM CAP
STAMPED "1992"

FOUND
3-1/4-INCH SUIR
ALUMINUM CAP
STAMPED "1992"

FOUND
3-1/4-INCH BLM
ALUMINUM CAP
STAMPED "1991"

FOUND
3-1/4-INCH SUIR
ALUMINUM CAP
STAMPED "1992"

FOUND
3-1/4-INCH SUIR
ALUMINUM CAP
STAMPED "1992"

FOUND
3-1/4-INCH SUIR
ALUMINUM CAP
STAMPED "1992"

FOUND
3-1/4-INCH BLM
ALUMINUM CAP
STAMPED "1991"

FOUND
3-1/4-INCH BLM
ALUMINUM CAP
STAMPED "1991"

PROPOSED
BOTTOM HOLE LOCATION
TIFFANY 2-2 LATERAL 1 ST 1

S 83°23'38" W
(GRID NAD83) 5214'
7310' SHL TO BHL
6661' TOP TO BHL

194'

655'

FOUND
3-1/4-INCH SUIR
ALUMINUM CAP
STAMPED "1991"

FOUND
3-1/4-INCH SUIR
ALUMINUM CAP
STAMPED "1991"

FOUND
3-1/4-INCH SUIR
ALUMINUM CAP
STAMPED "1991"

FOUND
3-1/4-INCH SUIR
ALUMINUM CAP
STAMPED "1991"

FOUND
3-1/4-INCH BLM
ALUMINUM CAP
(ILLEGIBLE)



BP AMERICA
PRODUCTION COMPANY
US LOWER 48 ONSHORE

WELL LOCATION PLAT

TIFFANY 2-2

PART OF
SECTION 17 AND SECTION 18, TOWNSHIP 33N,
RANGE 06W, N.M.P.M. AND SECTION 13,
TOWNSHIP 33N, RANGE 07W, N.M.P.M.
LA PLATA COUNTY, COLORADO

DRAWN BY
CFW/RLM

CHECKED BY
RLT

SCALE
1"=1000'

DATE
06/02/2016

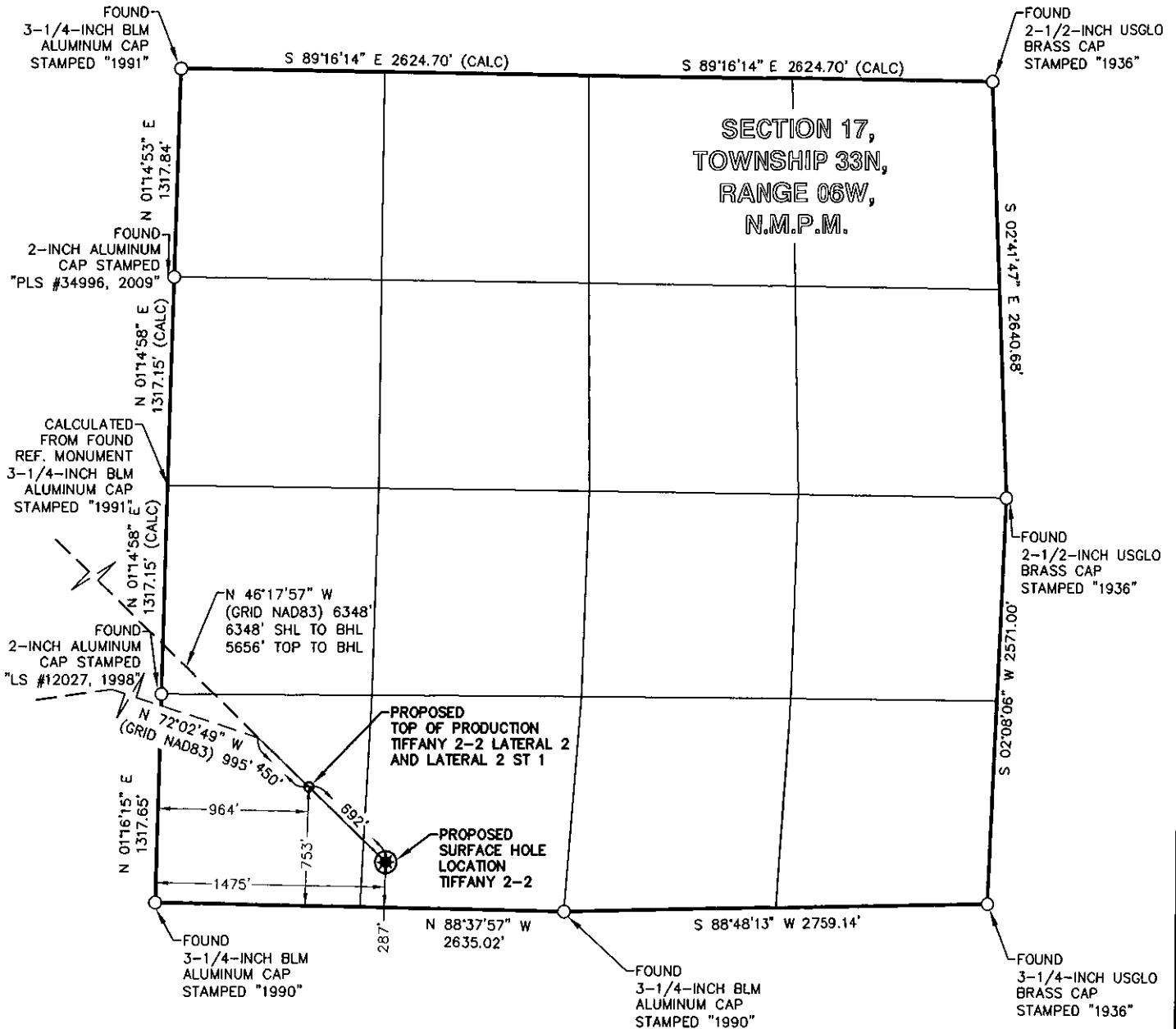
SHEET
3 OF 10

REVISION

LEGEND
 FOUND MONUMENT O
 PROPOSED SURFACE HOLE LOCATION *
 PROPOSED BOTTOM HOLE LOCATION X

0 500 1000 2000

GRAPHIC SCALE IN FEET



BP AMERICA
 PRODUCTION COMPANY
 US LOWER 48 ONSHORE

WELL LOCATION PLAT

TIFFANY 2-2

PART OF
 SECTION 17 AND SECTION 18, TOWNSHIP 33N,
 RANGE 06W, N.M.P.M. AND SECTION 13,
 TOWNSHIP 33N, RANGE 07W, N.M.P.M.,
 LA PLATA COUNTY, COLORADO

DRAWN BY
 CFW/RLM

CHECKED BY
 RLT

SCALE
 1"=1000'

DATE
 06/02/2016

SHEET
 4 OF 10

REVISION

LEGEND

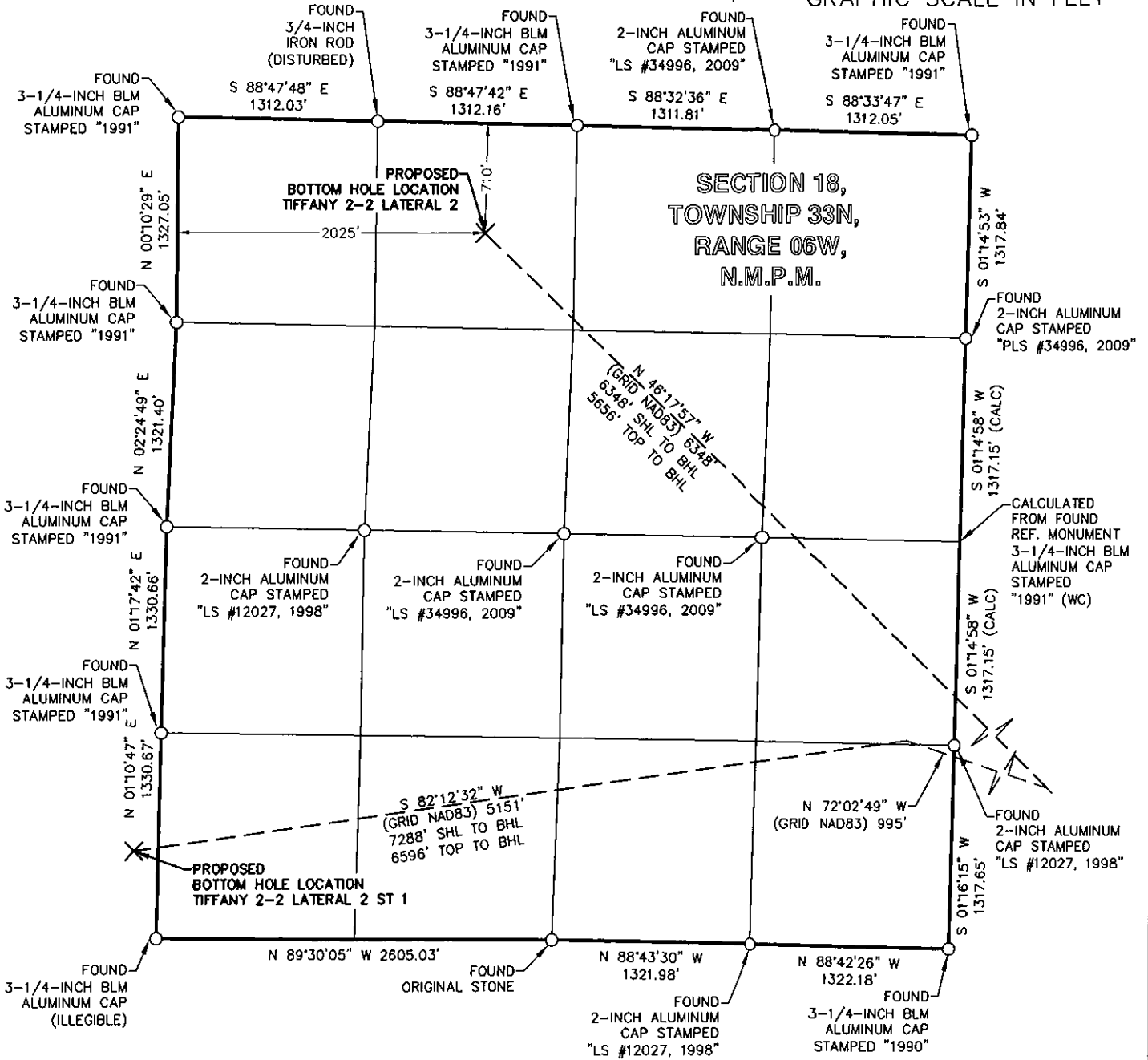
FOUND MONUMENT O
 PROPOSED SURFACE HOLE LOCATION *
 PROPOSED BOTTOM HOLE LOCATION x

0 500 1000 2000

GRAPHIC SCALE IN FEET

GRID NORTH

SECTION 18,
 TOWNSHIP 33N,
 RANGE 06W,
 N.M.P.M.



BP AMERICA
 PRODUCTION COMPANY
 US LOWER 48 ONSHORE

WELL LOCATION PLAT

TIFFANY 2-2

PART OF
 SECTION 17 AND SECTION 18, TOWNSHIP 33N,
 RANGE 06W, N.M.P.M. AND SECTION 13,
 TOWNSHIP 33N, RANGE 07W, N.M.P.M.
 LA PLATA COUNTY, COLORADO

DRAWN BY CFW/RLM	CHECKED BY RLT	SCALE 1"=1000'	DATE 06/02/2016	SHEET 5 OF 10	REVISION
---------------------	-------------------	-------------------	--------------------	------------------	----------

LEGEND

FOUND MONUMENT O

PROPOSED SURFACE HOLE LOCATION *

PROPOSED BOTTOM HOLE LOCATION X

0 500 1000 2000

GRAPHIC SCALE IN FEET

GRID NORTH

CALCULATED FROM FOUND
REF. MONUMENT 3-1/4-INCH
BLM ALUMINUM CAP
STAMPED "2006"

S 88°40'41" E 2632.08' (CALC)

FOUND
3-1/4-INCH BLM
ALUMINUM CAP
STAMPED "1991"

SECTION 13,
TOWNSHIP 33N,
RANGE 07W,
N.M.P.M.

FOUND
3-1/4-INCH SUIR
ALUMINUM CAP
STAMPED "1992"

FOUND
3-1/4-INCH SUIR
ALUMINUM CAP
STAMPED "1992"

FOUND
3-1/4-INCH SUIR
ALUMINUM CAP
STAMPED "1992"

FOUND
3-1/4-INCH BLM
ALUMINUM CAP
STAMPED "1991"

FOUND
3-1/4-INCH BLM
ALUMINUM CAP
STAMPED "1991"

FOUND
3-1/4-INCH BLM
ALUMINUM CAP
STAMPED "1991"

S 82°12'32" W
(GRID NAD83) 5151'
7288' SHL TO BHL
6596' TOP TO BHL

PROPOSED
BOTTOM HOLE LOCATION
TIFFANY 2-2 LATERAL 2 ST 1

158'

562'

FOUND
3-1/4-INCH BLM
ALUMINUM CAP
(ILLEGIBLE)

N 01°36'56" E
1320.29' (CALC)

FOUND
3-1/4-INCH SUIR
ALUMINUM CAP
STAMPED "1992"

N 01°39'08" E
1320.00'

FOUND
3-1/4-INCH SUIR
ALUMINUM CAP
STAMPED "1992"

N 01°40'04" E
1319.33'

FOUND
3-1/4-INCH SUIR
ALUMINUM CAP
STAMPED "1992"

N 01°38'24" E
1320.11'

FOUND
3-1/4-INCH SUIR
ALUMINUM CAP
STAMPED "1991"

N 88°21'03" W
1324.95'

FOUND
3-1/4-INCH SUIR
ALUMINUM CAP
STAMPED "1991"

N 88°21'21" W
1324.60'

FOUND
3-1/4-INCH SUIR
ALUMINUM CAP
STAMPED "1991"

N 88°21'11" W
1325.34'

FOUND
3-1/4-INCH SUIR
ALUMINUM CAP
STAMPED "1991"

N 88°21'25" W
1324.81'



BP AMERICA
PRODUCTION COMPANY
US LOWER 48 ONSHORE

WELL LOCATION PLAT

TIFFANY 2-2

PART OF
SECTION 17 AND SECTION 18, TOWNSHIP 33N,
RANGE 06W, N.M.P.M. AND SECTION 13,
TOWNSHIP 33N, RANGE 07W, N.M.P.M.
LA PLATA COUNTY, COLORADO

DRAWN BY
CFW/RLM

CHECKED BY
RLT

SCALE
1"=1000'

DATE
06/02/2016

SHEET
6 OF 10

REVISION

LEGEND

FOUND MONUMENT O

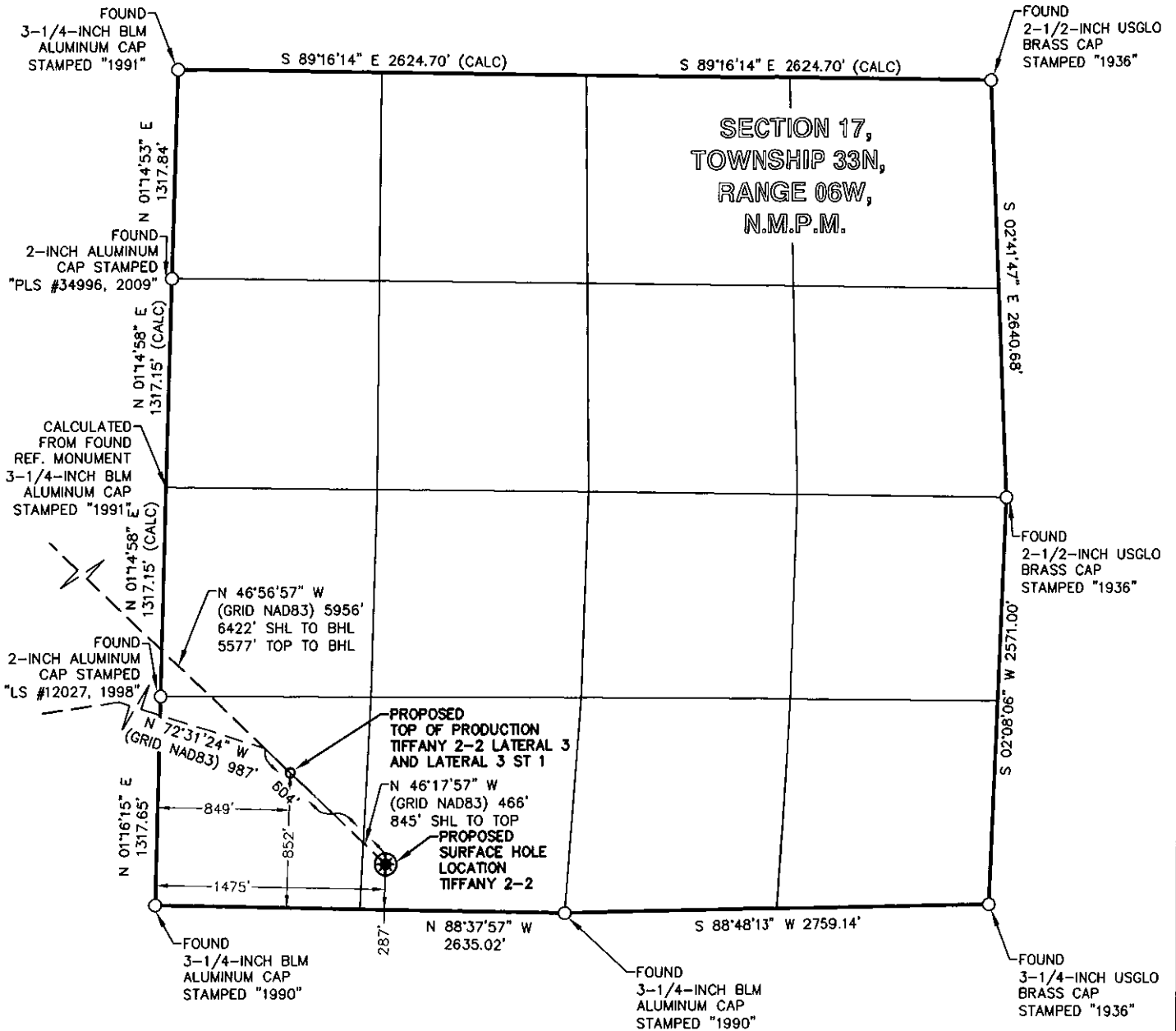
PROPOSED SURFACE HOLE LOCATION *

PROPOSED BOTTOM HOLE LOCATION X

0 500 1000 2000

GRAPHIC SCALE IN FEET

SECTION 17, TOWNSHIP 33N, RANGE 06W, N.M.P.M.



BP AMERICA
PRODUCTION COMPANY
US LOWER 48 ONSHORE

WELL LOCATION PLAT

TIFFANY 2-2

PART OF
SECTION 17 AND SECTION 18, TOWNSHIP 33N,
RANGE 06W, N.M.P.M. AND SECTION 13,
TOWNSHIP 33N, RANGE 07W, N.M.P.M.
LA PLATA COUNTY, COLORADO

DRAWN BY
CFW/RLM

CHECKED BY
RLT

SCALE
1"=1000'

DATE
06/02/2016

SHEET
7 OF 10

REVISION

LEGEND

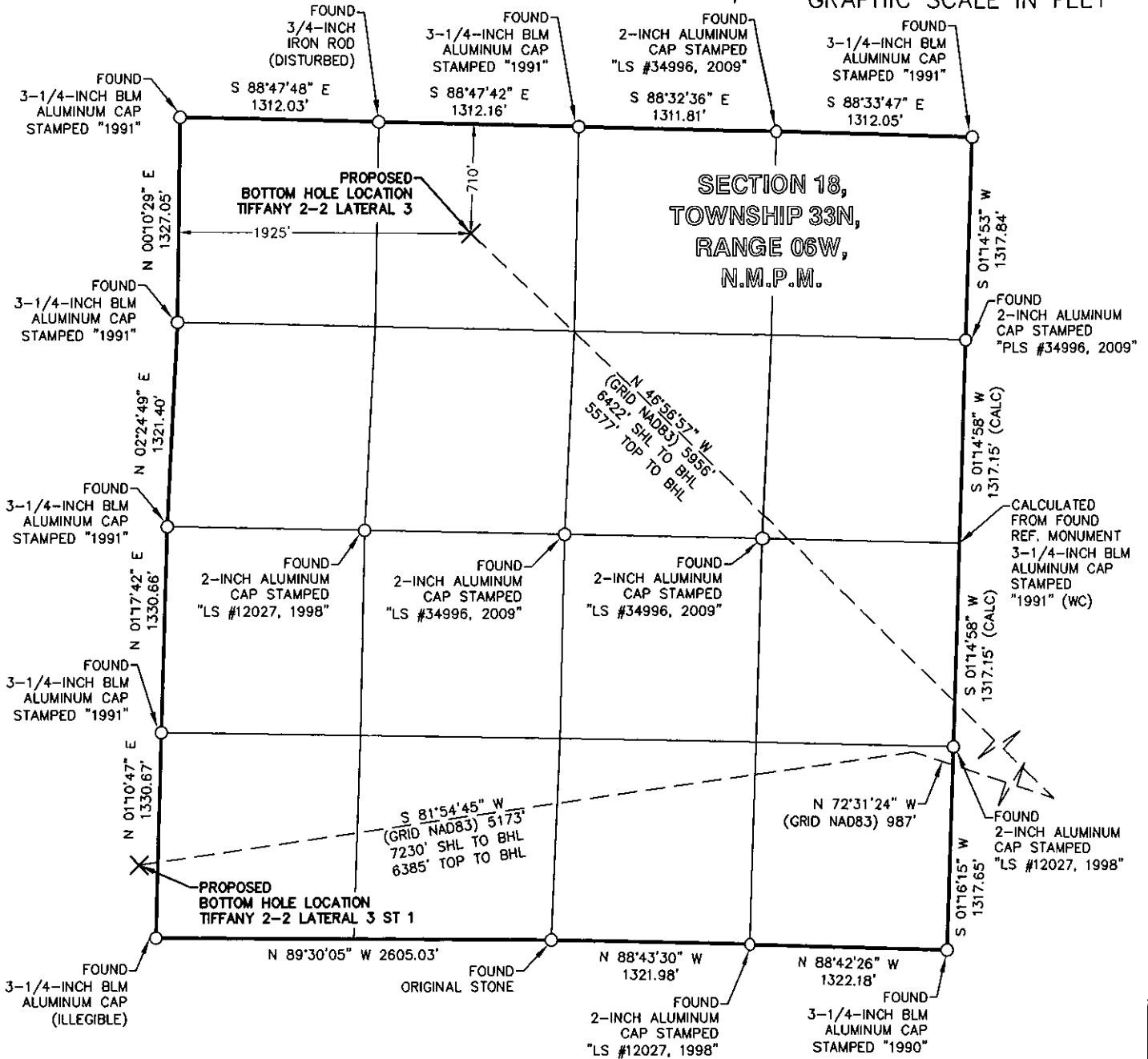
FOUND MONUMENT O

PROPOSED SURFACE HOLE LOCATION *

PROPOSED BOTTOM HOLE LOCATION X

0 500 1000 2000

GRAPHIC SCALE IN FEET



BP AMERICA
PRODUCTION COMPANY
US LOWER 48 ONSHORE

WELL LOCATION PLAT

TIFFANY 2-2

PART OF
SECTION 17 AND SECTION 18, TOWNSHIP 33N,
RANGE 06W, N.M.P.M. AND SECTION 13,
TOWNSHIP 33N, RANGE 07W, N.M.P.M.
LA PLATA COUNTY, COLORADO

DRAWN BY
CFW/RLM

CHECKED BY
RLT

SCALE
1"=1000'

DATE
06/02/2016

SHEET
8 OF 10

REVISION

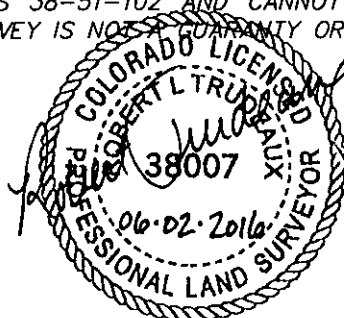
TIFFANY 2-2	CSZ NAD'83	NAD'83	TIES	ELEVATION
PROPOSED SURFACE HOLE LOCATION (SHL)	N (Y) = 1,163,284.22' E (X) = 2,408,617.09'	LAT. = 37.09746946°N LON. = 107.52775355°W	FSL = 287' FWL = 1475'	EXISTING GROUND 6667.25'
PROPOSED PILOT HOLE / TOP OF PRODUCTION (TOP) PILOT	N (Y) = 1,163,629.67' E (X) = 2,408,255.61'	LAT. = 37.09839642°N LON. = 107.52901834°W	FSL = 623' FWL = 1106'	PROPOSED GRADE 6669.75'
PROPOSED TOP OF PRODUCTION (TOP) LAT 1 AND LAT 1 ST 1	N (Y) = 1,163,733.38' E (X) = 2,408,149.59'	LAT. = 37.09867486°N LON. = 107.52938948°W	FSL = 725' FWL = 997'	
PROPOSED BOTTOM HOLE LOCATION (BHL) LAT 1	N (Y) = 1,167,667.88' E (X) = 2,404,127.77'	LAT. = 37.10923716°N LON. = 107.54347056°W	FNL = 710' FWL = 2125'	
PROPOSED BOTTOM HOLE LOCATION (BHL) LAT 1 ST 1	N (Y) = 1,163,775.18' E (X) = 2,401,707.17'	LAT. = 37.09840317°N LON. = 107.55147591°W	FSL = 655' FEL = 194'	
PROPOSED TOP OF PRODUCTION (TOP) LAT 2 AND LAT 2 ST 1	N (Y) = 1,163,762.07' E (X) = 2,408,117.07'	LAT. = 37.09875169°N LON. = 107.52950309°W	FSL = 753' FWL = 964'	
PROPOSED BOTTOM HOLE LOCATION (BHL) LAT 2	N (Y) = 1,167,669.98' E (X) = 2,404,027.79'	LAT. = 37.10923692°N LON. = 107.54381347°W	FNL = 710' FWL = 2025'	
PROPOSED BOTTOM HOLE LOCATION (BHL) LAT 2 ST 1	N (Y) = 1,163,681.27' E (X) = 2,401,741.52'	LAT. = 37.09814739°N LON. = 107.55135109°W	FSL = 562' FEL = 158'	
PROPOSED TOP OF PRODUCTION (TOP) LAT 3 AND LAT 3 ST 1	N (Y) = 1,163,864.65' E (X) = 2,408,003.51'	LAT. = 37.09902658°N LON. = 107.52989999°W	FSL = 852' FWL = 849'	
PROPOSED BOTTOM HOLE LOCATION (BHL) LAT 3	N (Y) = 1,167,672.08' E (X) = 2,403,927.81'	LAT. = 37.10923668°N LON. = 107.54415639°W	FNL = 710' FWL = 1925'	
PROPOSED BOTTOM HOLE LOCATION (BHL) LAT 3 ST 1	N (Y) = 1,163,587.35' E (X) = 2,401,775.86'	LAT. = 37.09789158°N LON. = 107.55122631°W	FSL = 469' FEL = 122'	


SURVEY NOTES

1. BEARING BASIS FOR THIS SURVEY IS BASED ON THE NORTH AMERICAN DATUM OF 1983, COLORADO STATE PLANE COORDINATE SYSTEM, COLORADO SOUTH, ZONE 0503.
2. ELEVATION BASIS FOR THIS SURVEY IS BASED ON THE NORTH AMERICAN VERTICAL DATUM OF 1988 (GEOID12A).
3. SURVEYED IN THE FIELD ON 04/16/2016.
4. BEARINGS AND DISTANCE SHOWN ARE MEASURED IN THE FIELD UNLESS OTHERWISE NOTED.
5. ALL MEASURED DISTANCES SHOWN ARE GRID USING A COMBINED SCALE FACTOR 0.99971262.
6. GPS INSTRUMENT OPERATOR: BRIAN BONIFACE
7. GPS PDOP VALUE: 1.9

SURVEYOR'S CERTIFICATE

I, ROBERT L. TRUDEAUX, A PROFESSIONAL LAND SURVEYOR IN THE STATE OF COLORADO, DO HEREBY CERTIFY THAT THIS PLAT WAS PREPARED FROM AN ACTUAL SURVEY PERFORMED BY ME OR UNDER MY DIRECT RESPONSIBILITY, SUPERVISION AND CHECKING, AND IS TRUE AND CORRECT TO THE BEST OF MY KNOWLEDGE AND BELIEF BASED ON THE STANDARDS OF CARE OF PROFESSIONAL LAND SURVEYORS PRACTICING IN THE STATE OF COLORADO. THIS DOES NOT REPRESENT A LAND SURVEY PLAT, IMPROVEMENT SURVEY PLAT, OR MONUMENTED LAND SURVEY AS DEFINED BY COLORADO REVISED STATUTES 38-51-102 AND CANNOT BE RELIED UPON TO DETERMINE OWNERSHIP. THIS SURVEY IS NOT A GUARANTEE OR WARRANTY, EITHER EXPRESSED OR IMPLIED.



	BP AMERICA PRODUCTION COMPANY US LOWER 48 ONSHORE
	WELL LOCATION PLAT
TIFFANY 2-2 PART OF SECTION 17 AND SECTION 18, TOWNSHIP 33N, RANGE 06W, N.M.P.M. AND SECTION 13, TOWNSHIP 33N, RANGE 07W, N.M.P.M. LA PLATA COUNTY, COLORADO	

DRAWN BY CFW/RLM	CHECKED BY RLT	SCALE N/A	DATE 06/02/2016	SHEET 10 OF 10	REVISION
---------------------	-------------------	--------------	--------------------	-------------------	----------