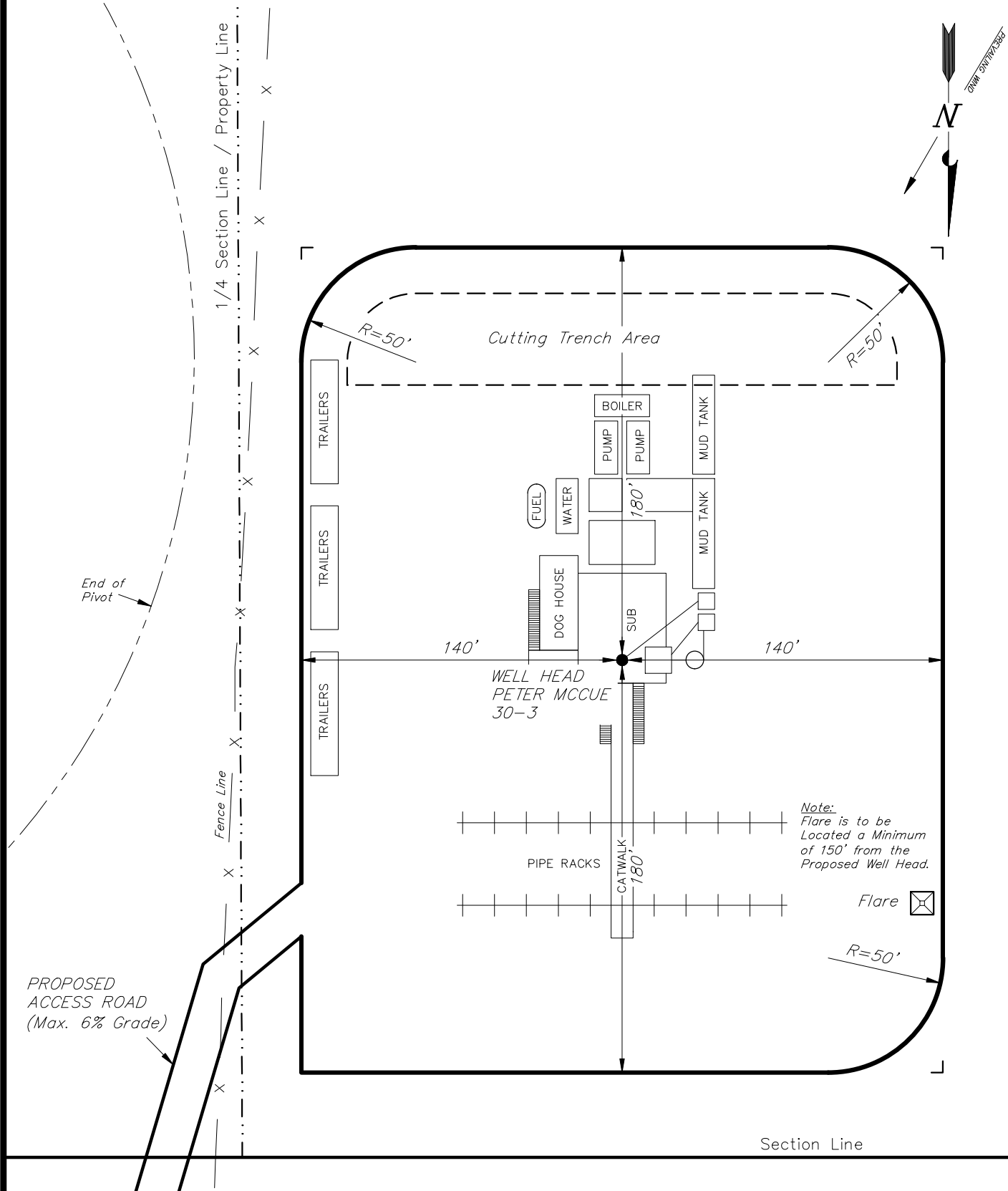


GRMR Oil & Gas, LLC

TYPICAL RIG LAYOUT

PETER MCCUE 30-3

Pad Location: Lot 7 (NENW) Section 30, T5N, R90W, 6th P.M.



SURVEYED BY:	K.G.S.	DATE SURVEYED:	05-10-16
DRAWN BY:	F.T.M.	DATE DRAWN:	04-19-16
SCALE:	1" = 60'	REVISED:	F.T.M. 06-13-16

Tri State
Land Surveying, Inc.
(435) 781-2501
180 NORTH VERNAL AVE. VERNAL, UTAH 84078