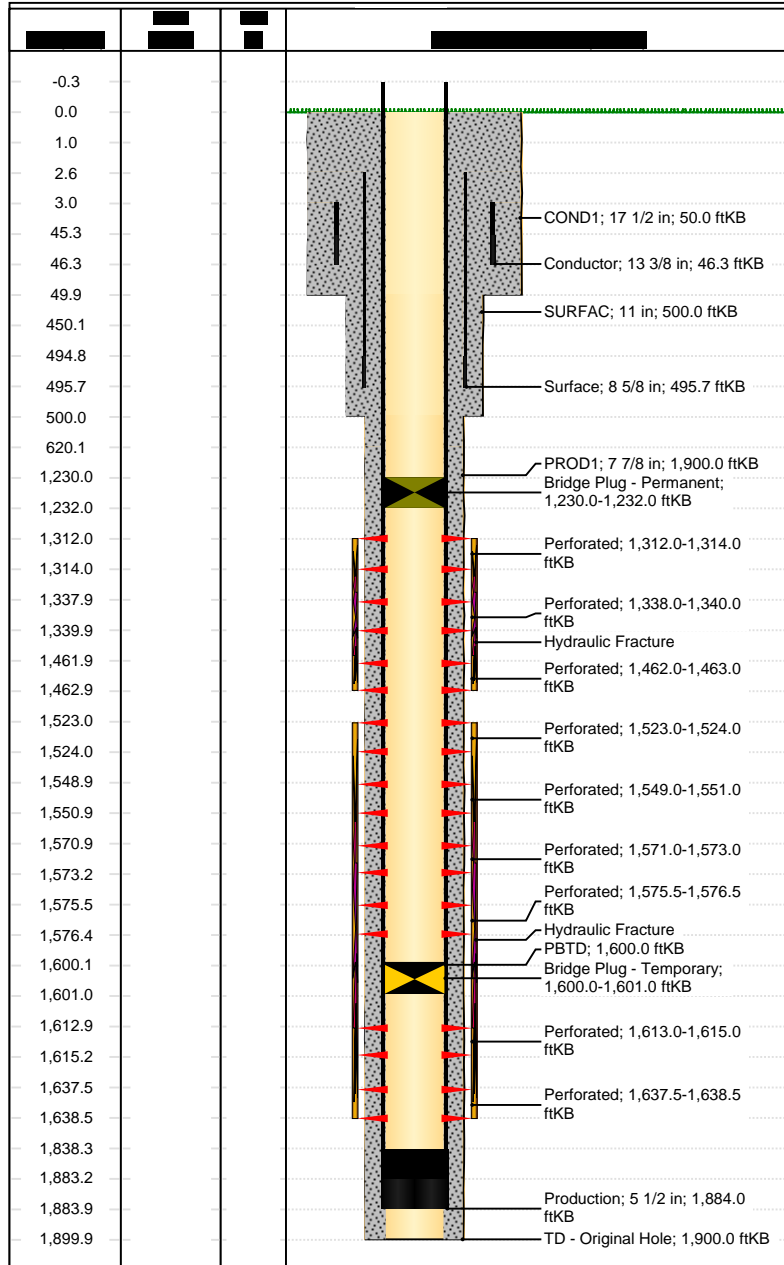




Downhole Well Profile - with Schematic

Well Name: Golden Eagle 30-03

API/UWI 05071093470000	XTO Accounting ID 94963	Permit Number 20072656	State/Province Colorado	County Las Animas
Location T33S-R67W-S30	Spud Date 7/30/2007 00:00	Original KB Elevation (ft) 7,250.00	Ground/Corrected Ground Elevation (ft) 7,250.00	KB-Ground Distance (ft) 0.00



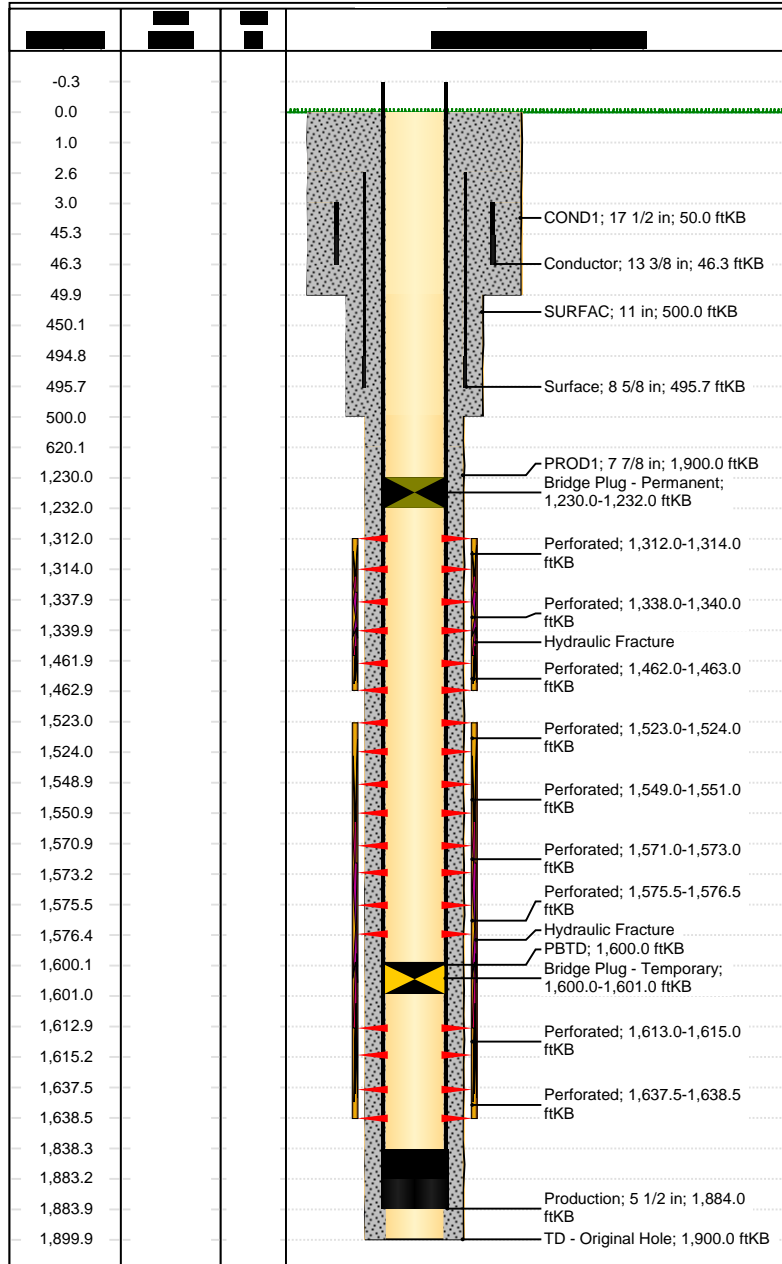
Wellbores									
Wellbore Name Original Hole		Parent Wellbore Original Hole			Wellbore API/UWI 050710934700				
Start Depth (ftKB)		Profile Type Vertical			Kick Off Depth (ftKB)				
Section Des		Size (in)		Act Top (ftKB)		Act Btm (ftKB)			
COND1		17 1/2		0.0		50.0			
SURFAC		11		50.0		500.0			
PROD1		7 7/8		500.0		1,900.0			
Zones									
Zone Name		Top (ftKB)		Btm (ftKB)		Current Status			
Vermejo		1,312.0		1,638.5					
Casing Strings									
Csg Des		Set Depth (ftKB)		OD (in)		Wt/Len (lb/ft)		Grade	
Conductor		46.3		13 3/8		54.50		J-55	
Surface		495.7		8 5/8		24.00		J-55	
Production		1,884.0		5 1/2		15.50		J-55	
Cement									
Des		Type				String			
Conductor Casing Cement		Casing				Conductor, 46.3ftKB			
Surface Casing Cement		Casing				Surface, 495.7ftKB			
Production Casing Cement		Casing				Production, 1,884.0ftKB			
Tubing Strings									
Tubing Description			Run Date			Set Depth (ftKB)			
Item Des		OD (in)	Wt (lb/ft)	Grade	Jts	Len (ft)	Top (ftKB)	Btm (ftKB)	
Rod Strings									
Rod Description			Run Date			Set Depth (ftKB)			
Item Des		OD (in)	Wt (lb/ft)	Grade	Jts	Len (ft)	Top (ftKB)	Btm (ftKB)	
Other In Hole									
Run Date		Des		OD (in)		Top (ftKB)		Btm (ftKB)	
2/23/2011		Bridge Plug - Temporary		4.892		1,600.0		1,601.0	
3/18/2016		Bridge Plug - Permanent		4.892		1,230.0		1,232.0	
Perforations									
Date		Top (ftKB)		Btm (ftKB)		Zone			
1/23/2008		1,312.0		1,314.0		Vermejo, Original Hole			
1/23/2008		1,338.0		1,340.0		Vermejo, Original Hole			
1/23/2008		1,462.0		1,463.0		Vermejo, Original Hole			
1/23/2008		1,523.0		1,524.0		Vermejo, Original Hole			
1/23/2008		1,549.0		1,551.0		Vermejo, Original Hole			
1/23/2008		1,571.0		1,573.0		Vermejo, Original Hole			
1/23/2008		1,575.5		1,576.5		Vermejo, Original Hole			



Downhole Well Profile - with Schematic

Well Name: Golden Eagle 30-03

API/UWI 05071093470000	XTO Accounting ID 94963	Permit Number 20072656	State/Province Colorado	County Las Animas
Location T33S-R67W-S30	Spud Date 7/30/2007 00:00	Original KB Elevation (ft) 7,250.00	Ground/Corrected Ground Elevation (ft) 7,250.00	KB-Ground Distance (ft) 0.00



Perforations			
Date	Top (ftKB)	Btm (ftKB)	Zone
1/23/2008	1,613.0	1,615.0	Vermejo, Original Hole
1/23/2008	1,637.5	1,638.5	Vermejo, Original Hole

Stimulations & Treatments						
Frac #	Top Perf (ftKB)	Bottom Perf (ftKB)	AIR (bbl/min)	MIR (bbl/min)	TWP (bbl)	Total Proppant (lb)