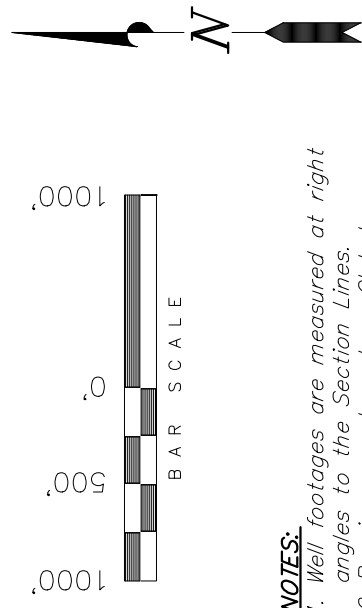




T4N, R90W, 6th P.M.  
31

GRMR Oil & Gas, LLC

TARGET BOTTOM HOLE, PEPPY 31-15,  
LOCATED AS SHOWN IN THE NE 1/4  
SE 1/4 OF SECTION 7, T4N, R90W, 6th  
P.M. MOFFAT COUNTY, COLORADO.



**NOTES:**

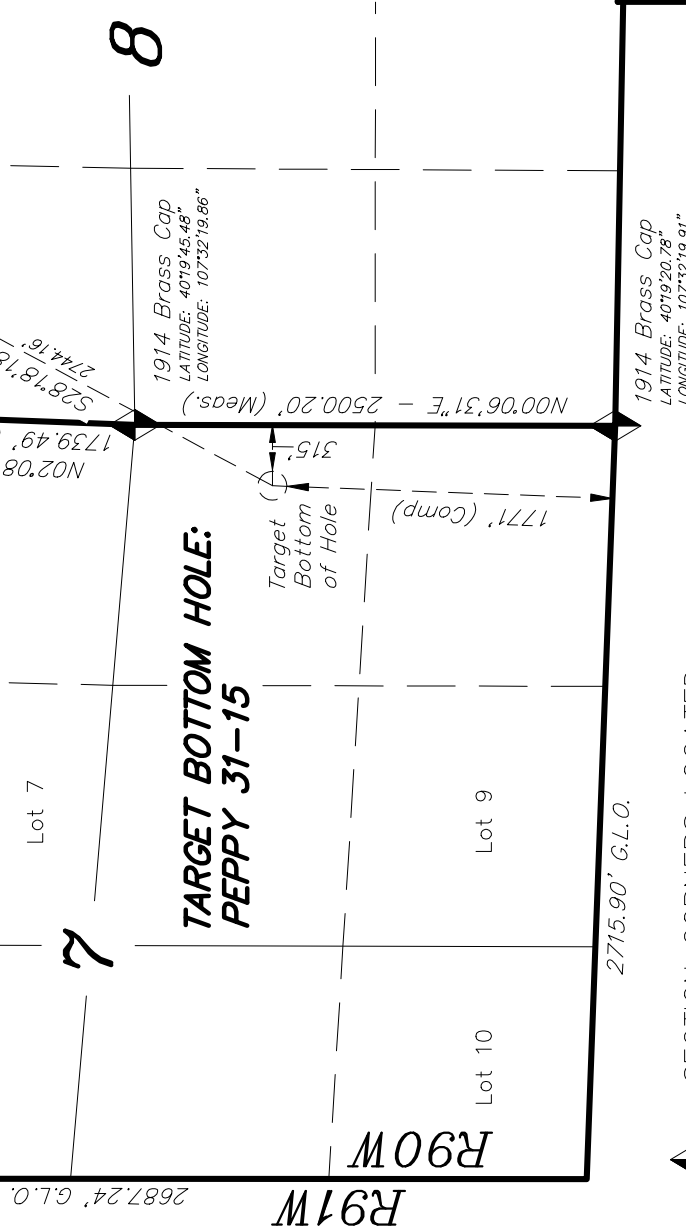
1. Well footages are measured at right angles to the Section Lines.
2. Bearings are based on Global Positioning Satellite observations.
3. Bottom of Hole bears N09°55'08"W 1811.59' from the Southeast Corner of Section 7, T4N, R90W, 6th P.M.

THIS IS TO CERTIFY THAT THE ABOVE PLAT WAS PREPARED FROM FIELD NOTES OF REALITY SURVEYS MADE BY ME OR UNDER MY SUPERVISION. THE LOCATION HAS BEEN STATIONED ON THE GROUND, AS SHOWN ON THE PLAT, AND THAT THE SAME ARE TRUE AND CORRECT TO THE BEST OF MY KNOWLEDGE AND BELIEF. 06-09-16 # 30125

REGISTERED LAND SURVEYOR  
REGISTRATION NO. 30125  
STATE OF COLORADO  
LAND SURVEY

**TRI STATE LAND SURVEYING & CONSULTING**  
180 NORTH VERNAL AVE. - VERNAL, UTAH 84078  
(435) 781-2501

DATE SURVEYED: 03-09-16	SURVEYED BY: K.G.S.
DATE DRAWN: 03-10-16	DRAWN BY: F.T.M.
REVISED: 06-09-16 F.T.M.	SCALE: 1" = 1000'



◆ = SECTION CORNERS LOCATED

BASIS OF ELEV; Elevations are based on an N.G.S. OPUS Correction. LOCATION: LAT. 40°20'35.28" LONG. 107°31'32.83" (Tristate Aluminum Cap) Elev. 6627'

**NAD 83 (TARGET BOTTOM HOLE LOCATION)**  
LATITUDE = 40°19'38.41" (40.327336°)  
LONGITUDE = 107°32'23.95" (107.539985°)