

Interim Reclamation Inspection

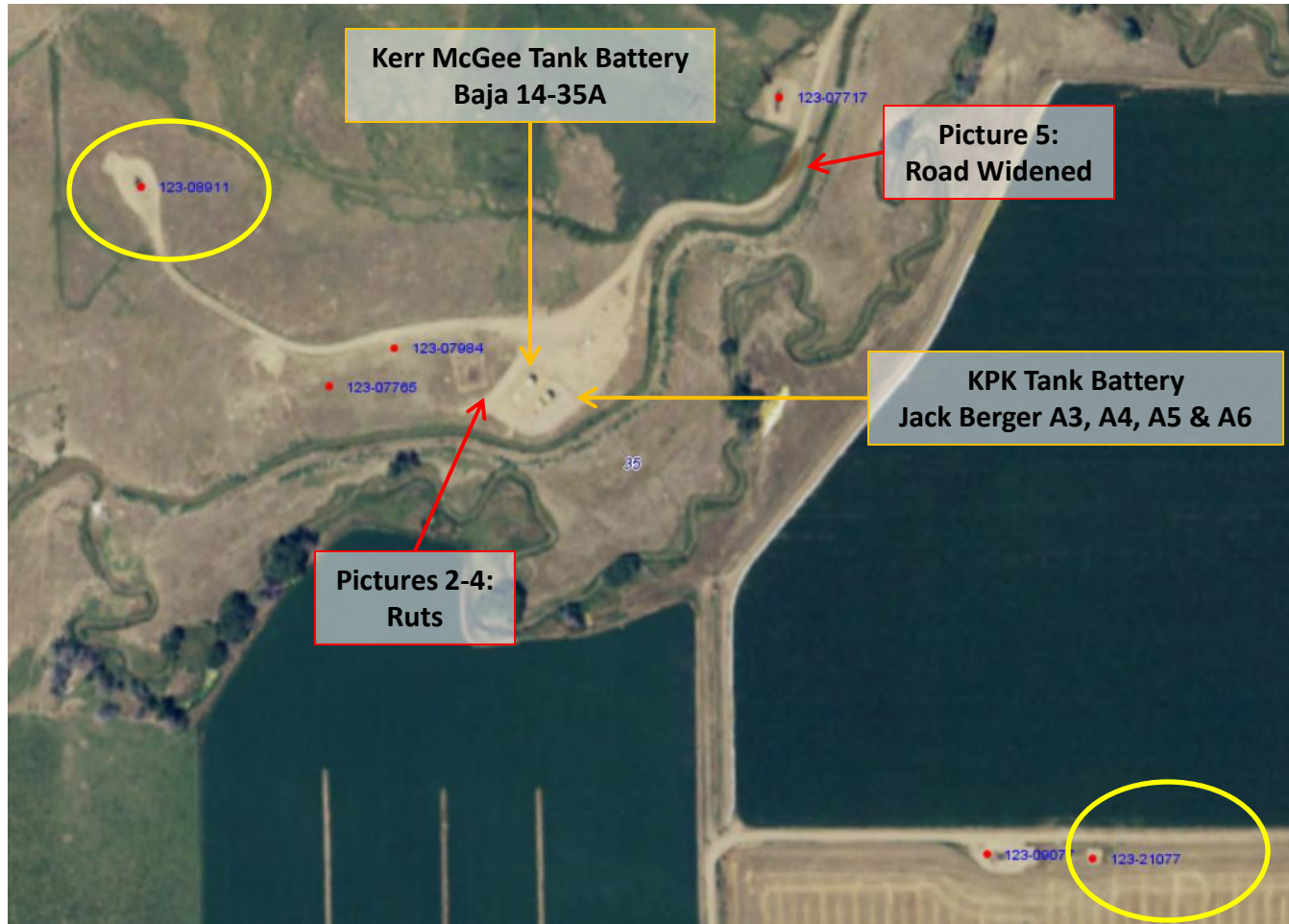


Photo 1. Aerial imagery using COGCC GISOnline database illustrating shared tank battery location with KPK and Kerr McGee in relation to corrective actions to fix ruts around southwest tank battery and widened access road.

Interim Reclamation Inspection



Photo 2. Photo taken from west of tank batteries, facing South. Need to maintain access road to prevent vehicle tracking and rutting.

Interim Reclamation Inspection



Photo 3. Photo taken from southwest of tank batteries, facing West. Need to maintain access road to prevent vehicle tracking and rutting.

Interim Reclamation Inspection



Photo 4. Photo taken from southwest of tank batteries, facing East. Need to maintain access road to prevent vehicle tracking and rutting.

Interim Reclamation Inspection



Photo 5. Photo taken north of tank batteries, facing South. Access road was widened. Need to repair access road and reseed portions that will be disturbed. Reseeding may have to wait until the Fall when more favorable conditions are permitted.