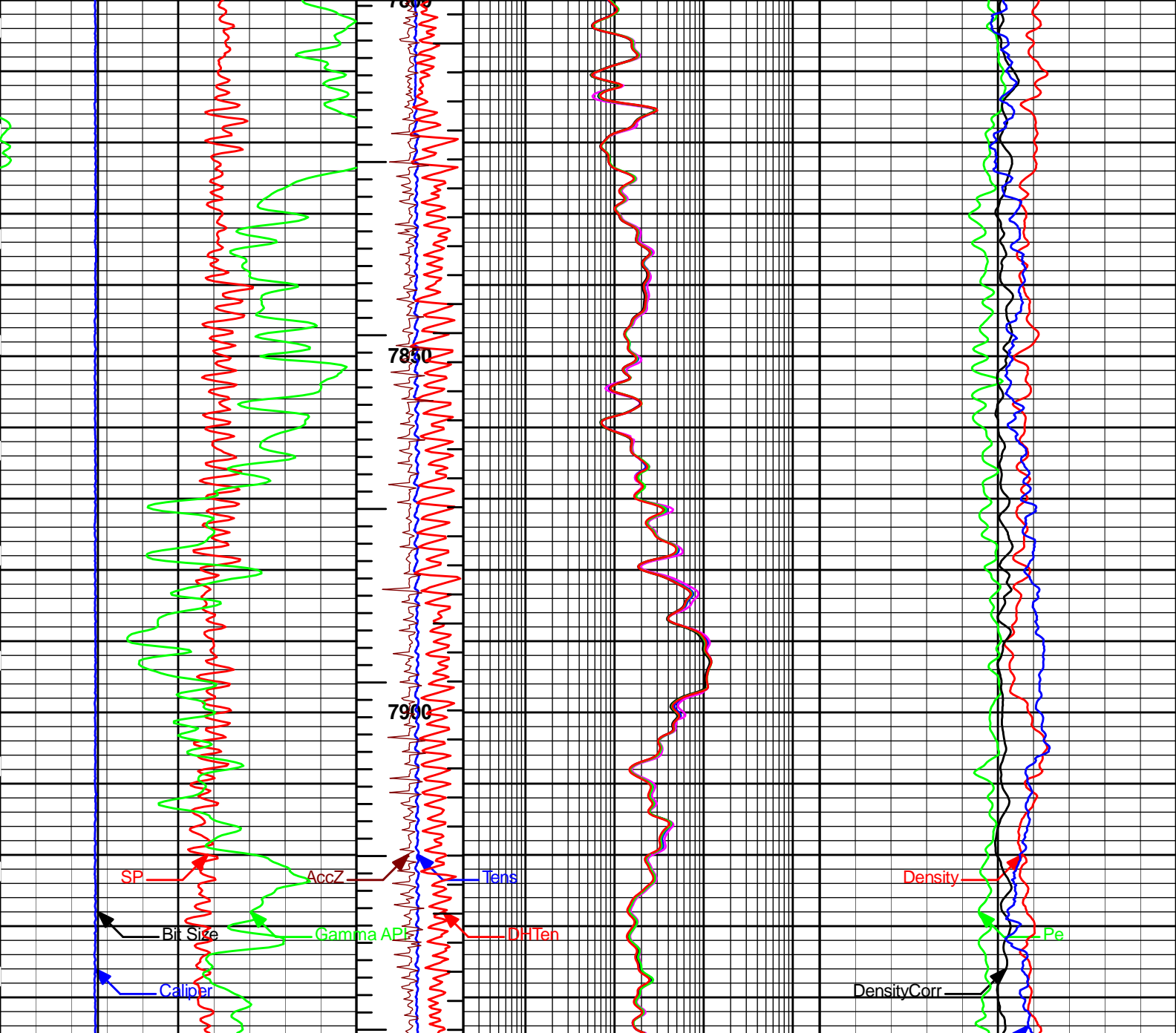
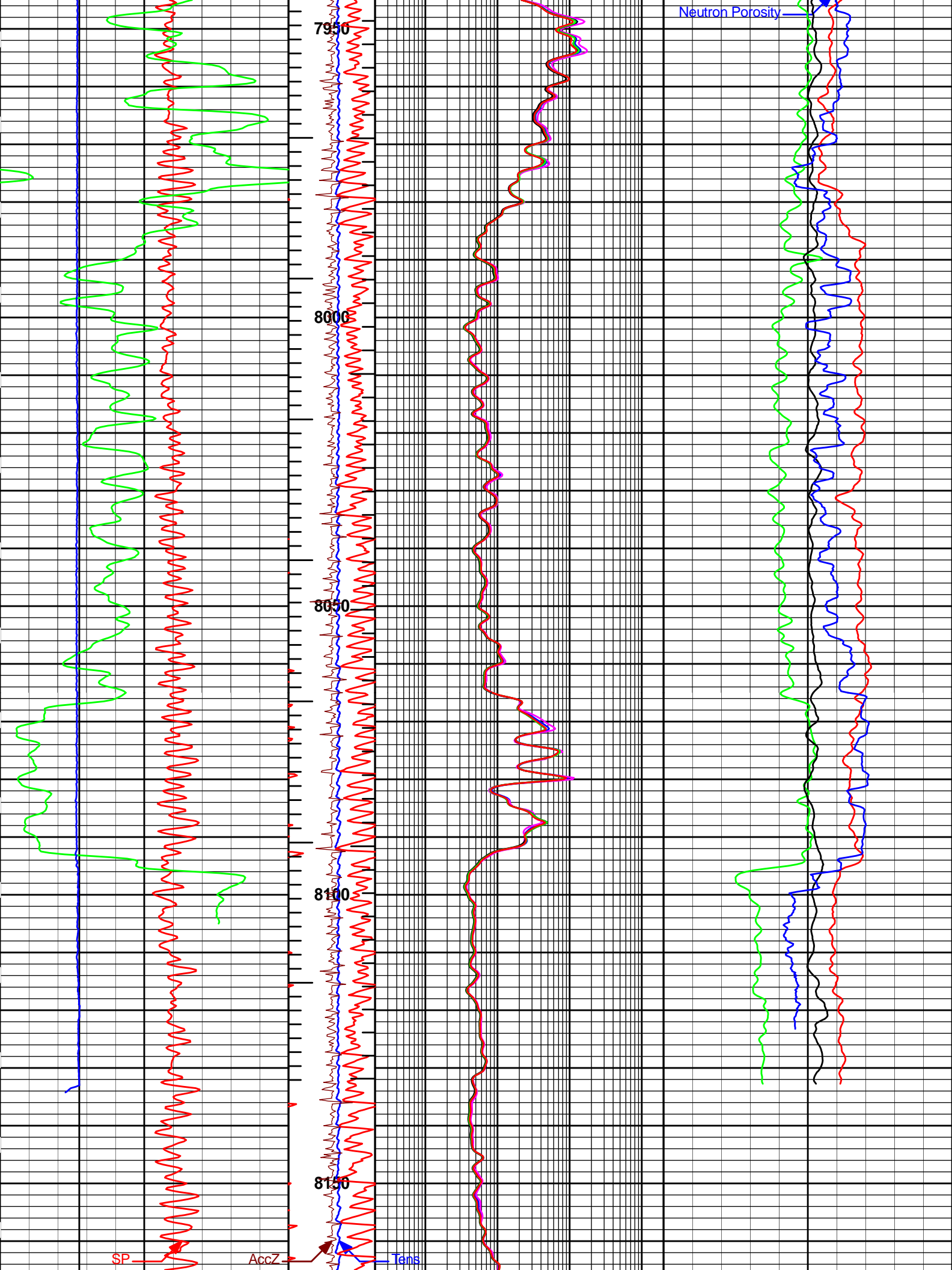
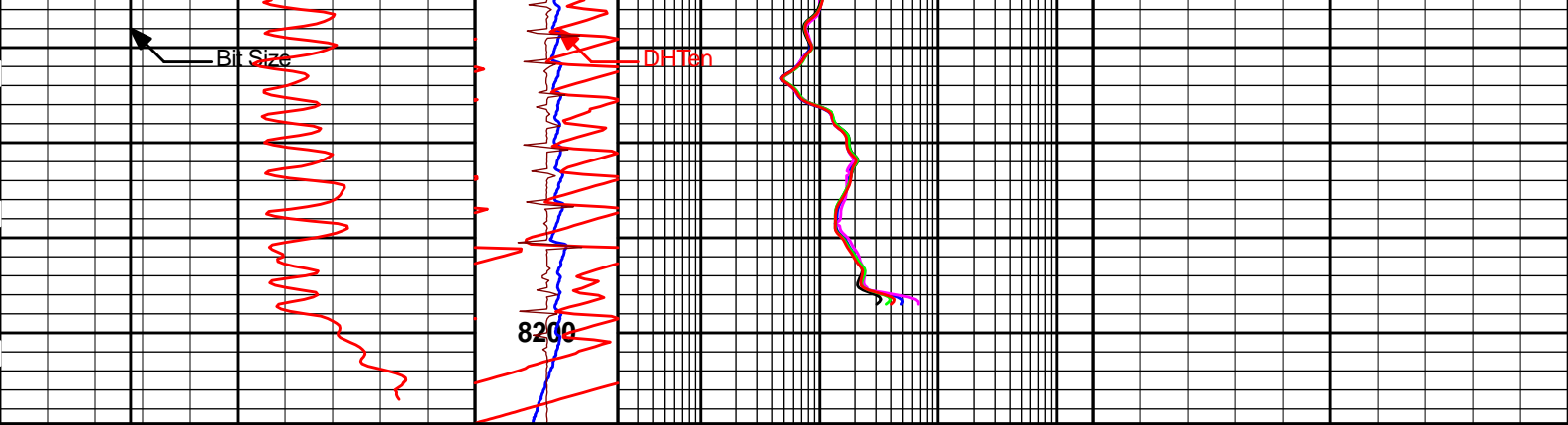


			0.2	10in Resistivity 2ft Res	2K			
			ohm-metre					
6	Caliper	16	0.8	AccZ	1.2	0.2	20in Resistivity 2ft Res	2K
inches			g					
0	Gamma API	200	Borehole Volume			0.2	90in Resistivity 2ft Res	2K
api						ohm-metre		
0	SP	150	Annular Volume			0.2	60in Resistivity 2ft Res	2K
millivolts						ohm-metre		
6	Bit Size	16	0	Tens	10K	0.2	30in Resistivity 2ft Res	2K
inches			pounds					
0	RMUD	5	MD			0.2	6in Resistivity 2ft Res	2K
ohm-metre			1 : 240			ohm-metre		
			ft					
						-0.25	DensityCorr	0.25
						gram per cc		
						0	Pe	10
						45	Neutron Porosity	-15
						pu		
						1.95	Density	2.95
						gram per cc		







0	RMUD	5	MD	0.2	6in Resistivity 2ft Res	2K	1.95	Density	2.95
	ohm-metre		1 : 240		ohm-metre			gram per cc	
6	Bit Size	16	Tens	0.2	30in Resistivity 2ft Res	2K	45	Neutron Porosity	-15
	inches		pounds		ohm-metre			pu	
0	SP	150	Annular Volume	0.2	60in Resistivity 2ft Res	2K	0	Pe	10
	millivolts				ohm-metre				
0	Gamma API	200	Borehole Volume	0.2	90in Resistivity 2ft Res	2K	-0.25	DensityCorr	0.25
	api				ohm-metre			gram per cc	
6	Caliper	16	0.8 AccZ 1.2	0.2	20in Resistivity 2ft Res	2K			
	inches		g		ohm-metre				
				0.2	10in Resistivity 2ft Res	2K			
					ohm-metre				

HALLIBURTON

Plot Time: 28-May-14 11:24:46  
Plot Range: 7800 ft to 8210 ft  
Data: COP\_ST\_HARV\_1H\Well Based\REPEAT\  
Plot File: \\COMP\COP\_MAIN