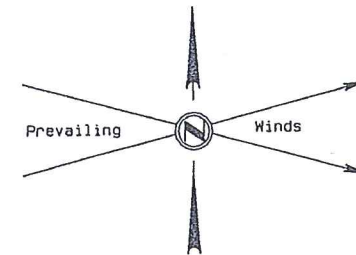
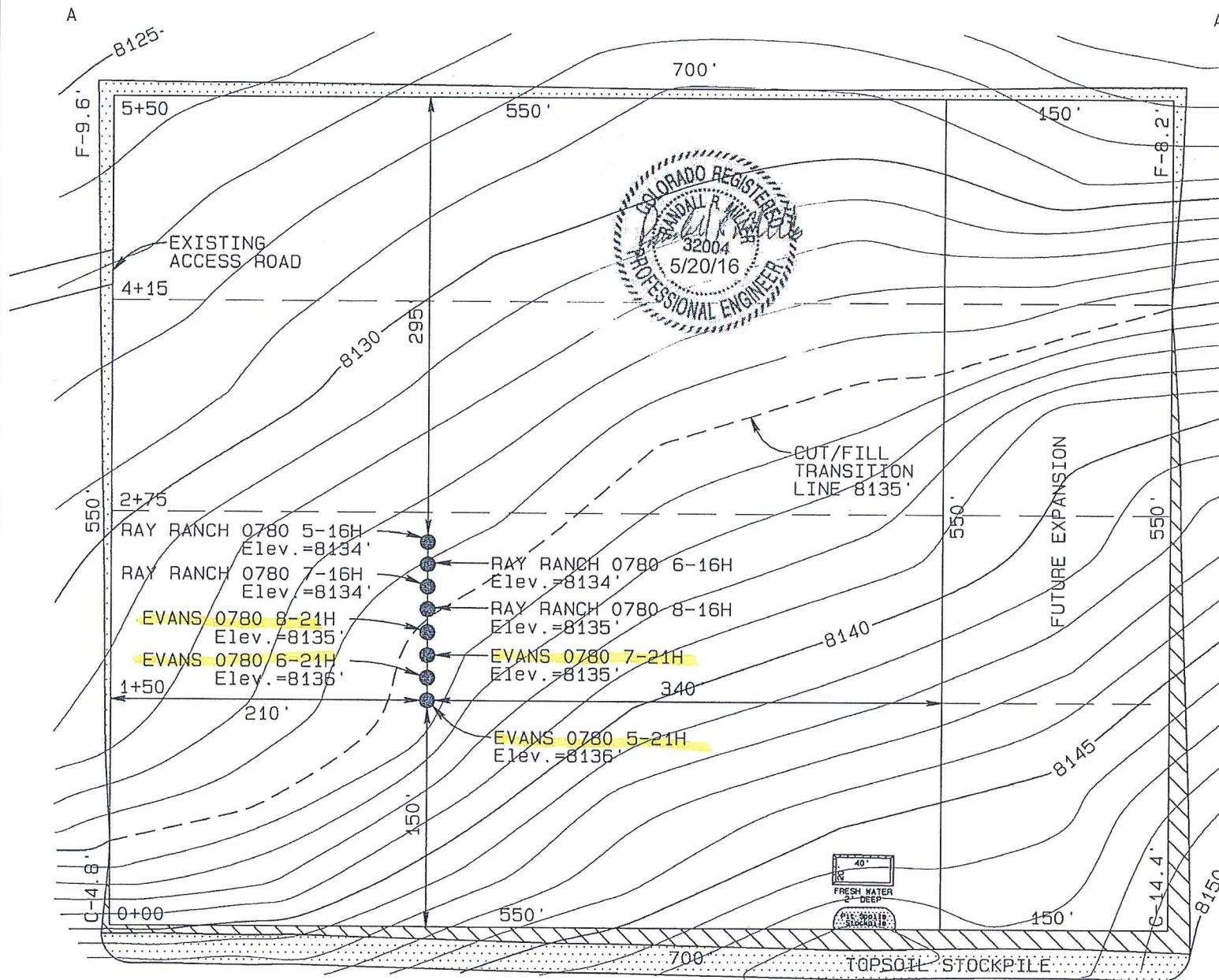


SandRidge Exploration & Production, LLC

CONSTRUCTION LAYOUT

RAY RANCH 0780 S16 PAD

NE1/4SW1/4 of SECTION 16, T7N, 80W, 6th PM

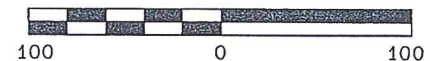


Earthwork:

Total Excavation - 40150 Cu. Yd.
 Pad Fill - 31370 Cu. Yd.
 Topsoil Stockpile - 8780 Cu. Yd.
 Pad Area - 8.84 acre

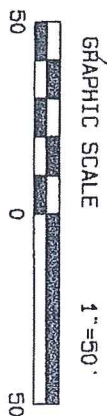
Final Pad Elev. = 8135'
 Elev. for Surface Locations
 are at Ungraded Ground

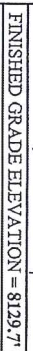
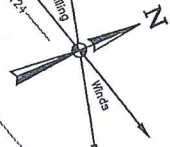
GRAPHIC SCALE 1"=100'



CONSTRUCTION LAYOUT

NW1/4NE1/4 of SECTION 21, T7N, 80W, 6th PM





REV: 5 04-20-16 M.D. (ADD WELLS & EXPANDED PAD)

UINTEAH
 UELS, LLC
 Corporate Office * 85 South 200 East
 Vernal, UT 84078 * (435) 789-1017

SURVEYED BY	C.M., G.W.	04-18-16	SCALE
DRAWN BY	M.D.	04-20-16	1" = 50'

CONSTRUCTION LAYOUT **FIGURE #1**

