



CEMENT BOND LOG

Mesa Wireline

Company ENCANA OIL & GAS (USA) INC.

Well FILE 41-17

Field WATTENBERG

County WELD State COLORADO

Location:

API#: 05-123

ter Sen

SHL: 1072 FNL & 1707 FEL

NONE

SEC: 17 TWP: 2N RGE: 68W

Elevation

Log Measured From
GROUND LEVEL

4.835

Drilling Measured From KELL

L. 4882

ONE	0.190
-----	-------

	8158
email	8158

	7.875

1100

mm	28.34 LBS
	N/A

N/A

1001

FD7701	
FD7702	
FD7703	
FD7704	
FD7705	
FD7706	
FD7707	
FD7708	
FD7709	
FD7710	
FD7711	
FD7712	
FD7713	
FD7714	
FD7715	
FD7716	
FD7717	
FD7718	
FD7719	
FD7720	
FD7721	
FD7722	
FD7723	
FD7724	
FD7725	
FD7726	
FD7727	
FD7728	
FD7729	
FD7730	
FD7731	
FD7732	
FD7733	
FD7734	
FD7735	
FD7736	
FD7737	
FD7738	
FD7739	
FD7740	
FD7741	
FD7742	
FD7743	
FD7744	
FD7745	
FD7746	
FD7747	
FD7748	
FD7749	
FD7750	
FD7751	
FD7752	
FD7753	
FD7754	
FD7755	
FD7756	
FD7757	
FD7758	
FD7759	
FD7760	
FD7761	
FD7762	
FD7763	
FD7764	
FD7765	
FD7766	
FD7767	
FD7768	
FD7769	
FD7770	
FD7771	
FD7772	
FD7773	
FD7774	
FD7775	
FD7776	
FD7777	
FD7778	
FD7779	
FD7780	
FD7781	
FD7782	
FD7783	
FD7784	
FD7785	
FD7786	
FD7787	
FD7788	
FD7789	
FD7790	
FD7791	
FD7792	
FD7793	
FD7794	
FD7795	
FD7796	
FD7797	
FD7798	
FD7799	
FD7800	

Z. LEWIS	
C. REYER	

100

From	To
------	----

To

6	0	000
---	---	-----

Size	N
small	

bottom

[illegible]

3170'

--	--

1

<<< Fold Here >>>

All interpretations are opinions based on inferences from electrical or other measurements and we cannot and do not guarantee the accuracy or correctness of any interpretation, and we shall not, except in the case of gross or willful negligence on our part, be liable or responsible for any loss, costs, damages, or expenses incurred or sustained by anyone resulting from any interpretation made by any of our officers, agents or employees. These interpretations are also subject to our general terms and conditions set out in our current Price Schedule.

Comments

LOG CORRELATED TO LINER TOP.

WE APPRECIATE YOUR BUSINESS. MESA WIRELINE LLC, GRAND JUNCTION CO. (970) 257-0458

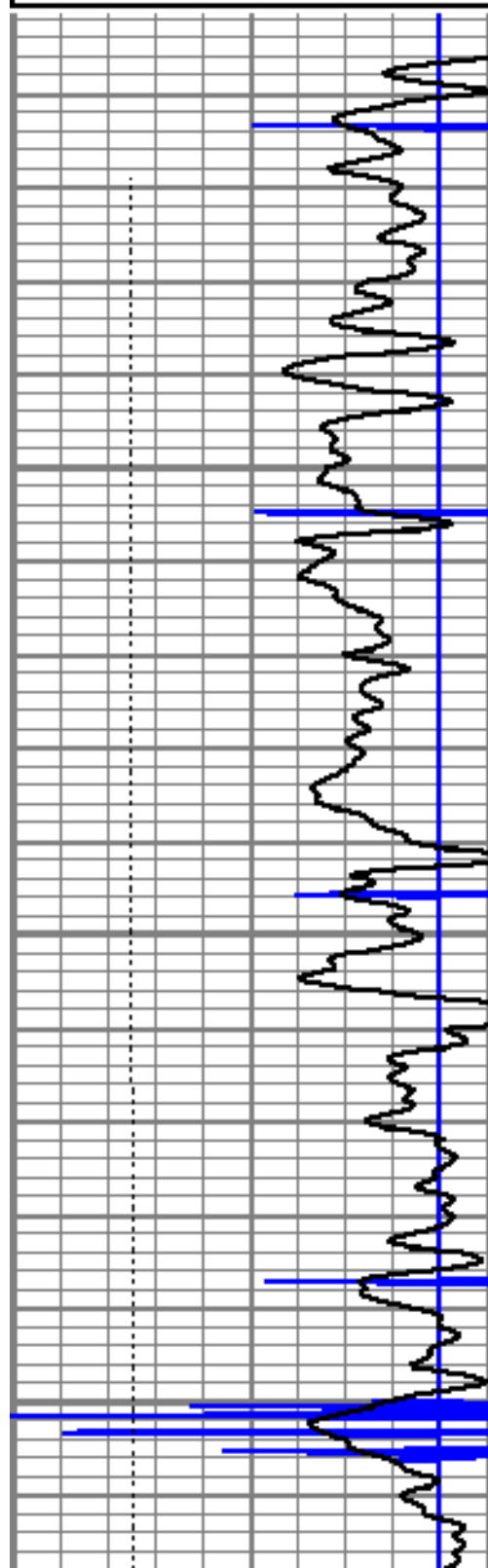


MAIN PASS

Database File: file41-17liner.db
 Dataset Pathname: pass17
 Presentation Format: cbl_dr
 Dataset Creation: Tue May 01 10:51:26 2012
 Charted by: Depth in Feet scaled 1:240

9	Collar Locator	-1
0	Gamma Ray (GAPI)	150
0	Line Tention (lb)	5000

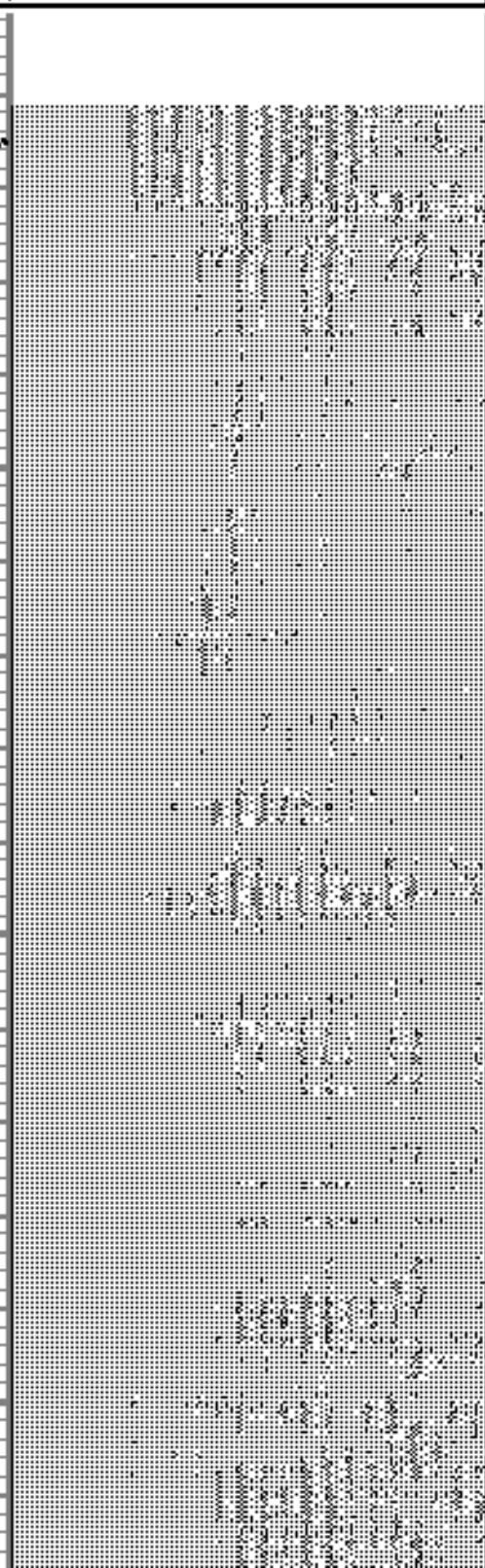
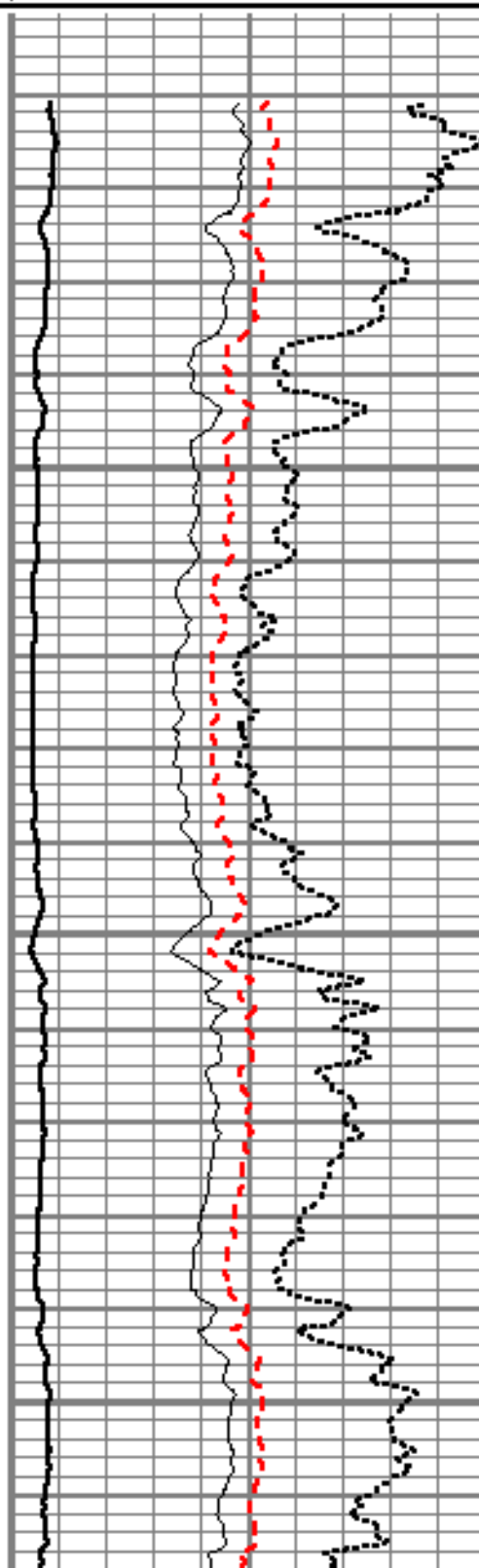
0	Amplitude (mV)	100	200	Variable Density	1200
200	Travel Time (usec)	275			
-15	Attenuation (db/ft)	0			
1	Bond Index	0			
200	PPT (usec)	275			

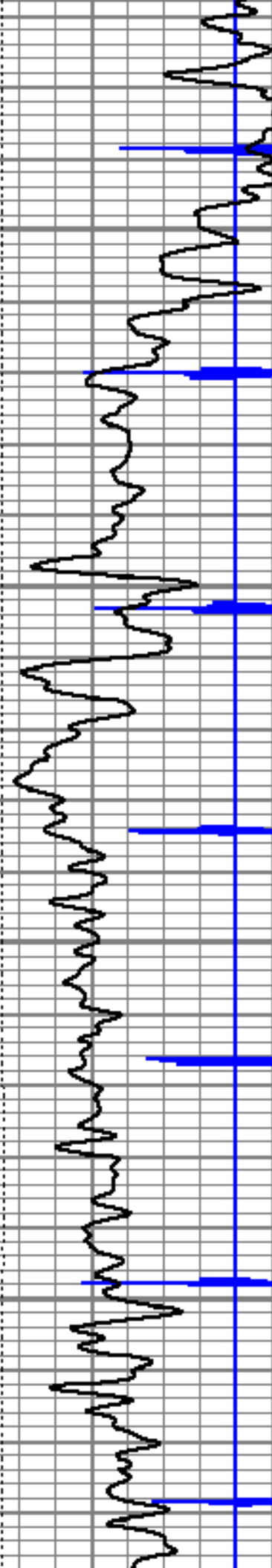


7800

7850

7900



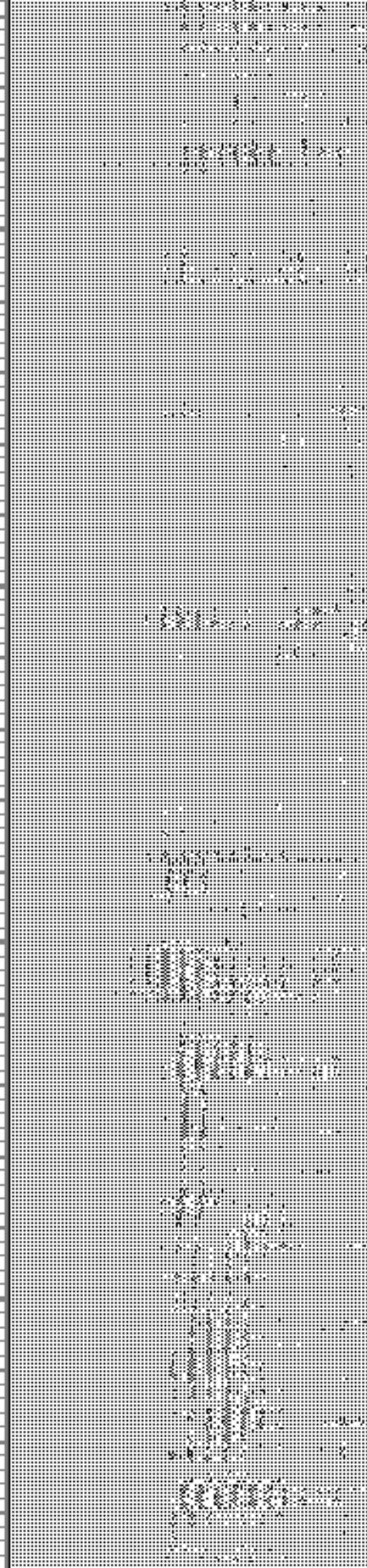
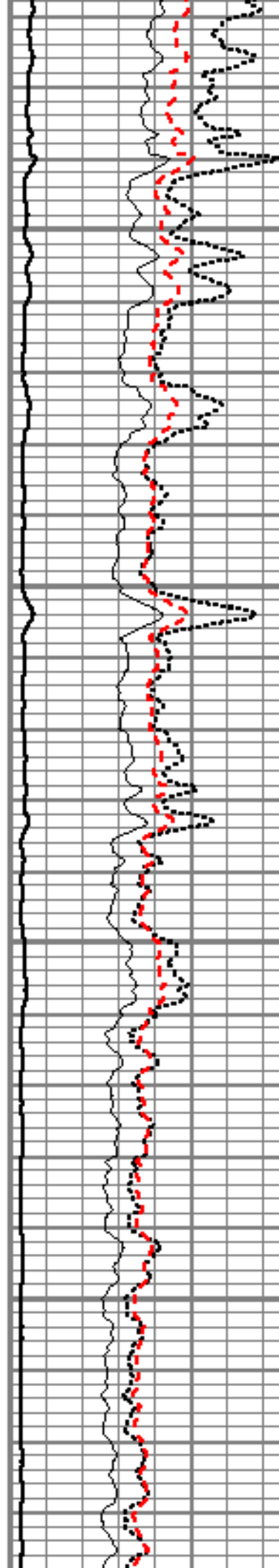


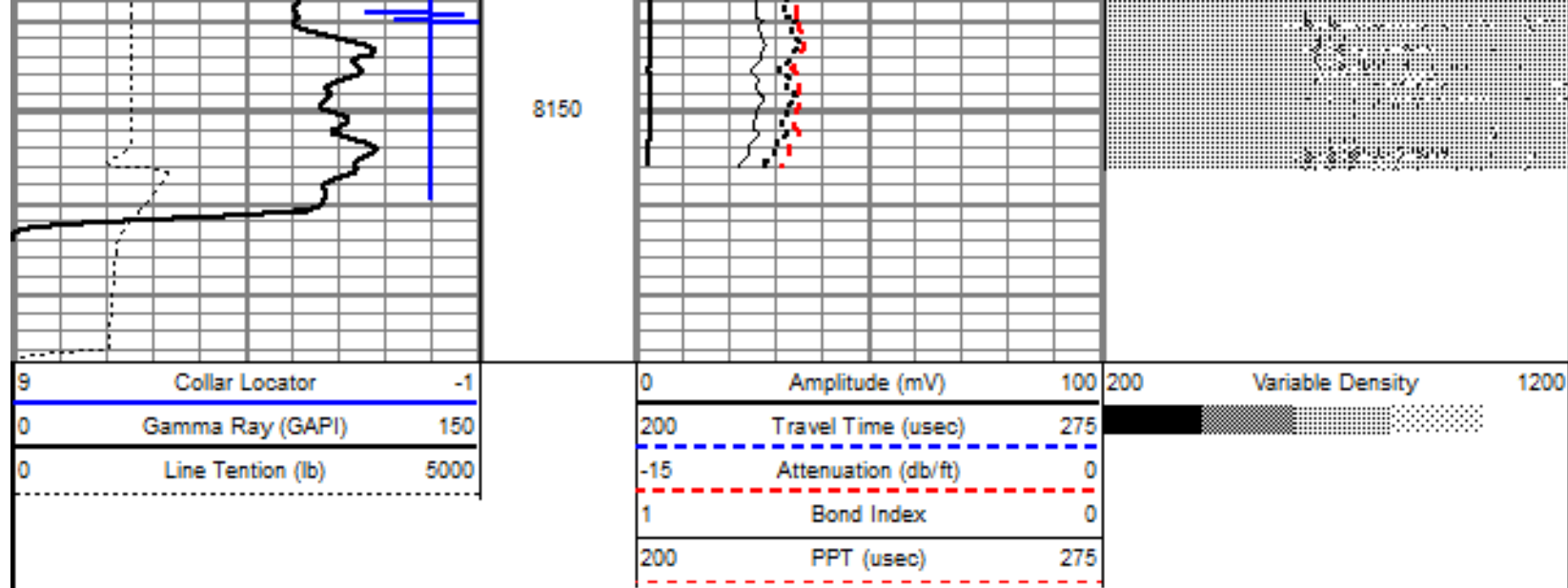
7950

8000

8050

8100





	Company	ENCANA OIL & GAS (USA) INC.
	Well	FILE 41-17
	Field	WATTENBERG
	County	WELD
	State	COLORADO