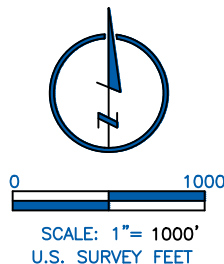


### LAND SURVEYOR'S CERTIFICATION

LAMP, RYNEARSON & ASSOCIATES, INC., OF FT. COLLINS, COLORADO HAS, IN ACCORDANCE WITH A REQUEST FROM DUSTIN DYK FOR EXTRACTION OIL AND GAS, DETERMINED THE SURFACE LOCATION OF THE WELL DESIGNATED AS VT-LDS C2-16-18 TO BE 1885.51' FROM THE NORTH LINE AND 625.78' FROM THE WEST LINE OF SECTION 5, TOWNSHIP 5 NORTH, RANGE 65 WEST OF THE 6TH P.M., WELD COUNTY, COLORADO.



FRANK A. KOHL  
 COLORADO PLS 37067  
 DATE OF SURVEY: 7/20/2015 (SECTION CONTROL)  
 DATE OF SURVEY: 09/18/2015 (WELL LOCATION)



### NOTES:

- DISTANCES ARE MEASURED PERPENDICULAR TO NEAREST SECTION LINE AND ARE SHOWN ON THE SAME SIDE OF THE SECTION LINE WHERE THE WELL IS LOCATED.
- THIS MAP DOES NOT REPRESENT A MONUMENTED BOUNDARY SURVEY. SIXTEENTH CORNER LOCATIONS ARE COMPUTED, UNLESS OTHERWISE NOTED.
- BOTTOM HOLE LOCATIONS AND HORIZONTAL COMPLETION ZONE PROVIDED BY OTHERS.

### BASIS OF BEARING:

THE NORTH LINE OF THE NORTHEAST QUARTER OF SECTION 315-T5N-R65W BEARS N88°45'45"W BETWEEN THE NORTH QUARTER CORNER OF SECTION 15 MONUMENTED WITH 3/4" REBAR W/ 3 1/4" A.C. STAMPED "LS 22098" AND THE NORTHEAST CORNER OF SECTION 15 MONUMENTED WITH 1/4" REBAR W/ 3 1/4" A.C. STAMPED "LS 7242" BASED ON THE COLORADO NORTH 0501 STATE PLANE COORDINATE SYSTEM.

ELEVATIONS ARE BASED ON NAVD 88, AS OBSERVED FROM GPS OBSERVATIONS



**LAMP RYNEARSON**  
 & ASSOCIATES

4715 Innovation Drive 970.226.0342 | P  
 Fort Collins, CO 80525 970.226.0879 | F  
 www.LRA-Inc.com

PROPOSED WELL LOCATION EXHIBIT  
 VT-LDS C2-16-18  
 1 OF 4

DRAWN BY  
 KJW  
 PATH\FILENAME

DATE  
 2/26/16

COGCC ID

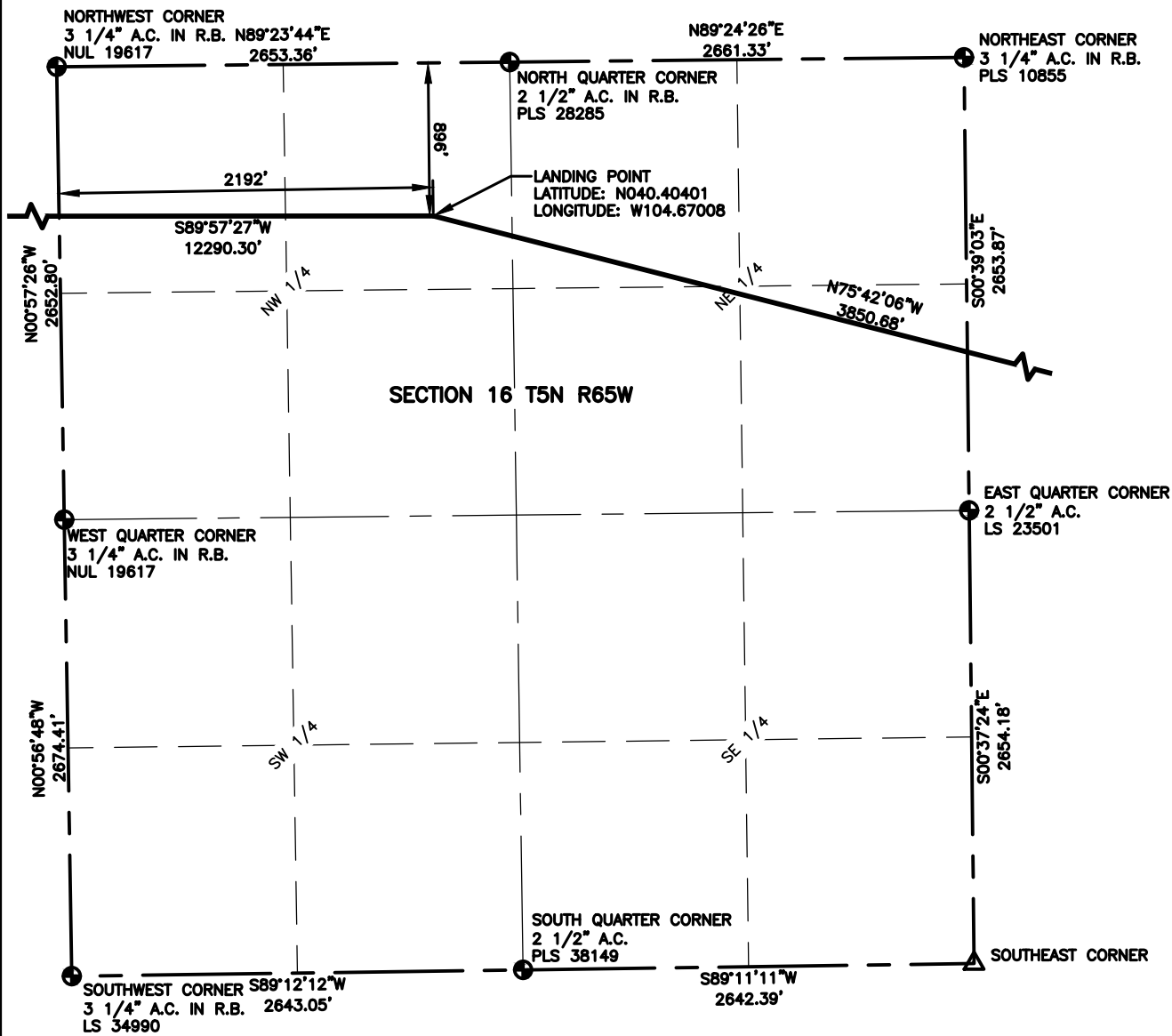
PROJECT - TASK NUMBER  
 0215036.00

BOOK AND PAGE  
 MRI-04 PG-6

SURFACE - LOCATION

SW /4, NW /4, SEC 15 T5N R65W

P:\\_Engineering\0215036 Vetting 15 H\DRAWINGS\EXHIBITS\0215036EXWP-04.dwg



### LEGEND

- |   |                   |
|---|-------------------|
| △ COMPUTED ALIQUOT CORNER FROM MONUMENT RECORDS | ⊙ PROPOSED WELL   |
| ⊕ ALIQUOT CORNER                                | A.C. ALUMINUM CAP |
| ■ COMPUTED ALIQUOT CORNER FROM GLO RECORDS      | R.B. RANGE BOX    |
| ⊖ BOTTOM HOLE                                   |                   |

### NOTES:

- DISTANCES ARE MEASURED PERPENDICULAR TO NEAREST SECTION LINE AND ARE SHOWN ON THE SAME SIDE OF THE SECTION LINE WHERE THE WELL IS LOCATED.
- THIS MAP DOES NOT REPRESENT A MONUMENTED BOUNDARY SURVEY. SIXTEENTH CORNER LOCATIONS ARE COMPUTED, UNLESS OTHERWISE NOTED.
- BOTTOM HOLE LOCATIONS AND HORIZONTAL COMPLETION ZONE PROVIDED BY OTHERS.



0 1000

SCALE: 1"= 1000'  
U.S. SURVEY FEET



**LAMP RYNEARSON**  
& ASSOCIATES

4715 Innovation Drive 970.226.0342 | P  
Fort Collins, CO 80525 970.226.0879 | F  
[www.LRA-Inc.com](http://www.LRA-Inc.com)

PROPOSED WELL LOCATION EXHIBIT  
VT-LDS C2-16-18  
2 OF 4

DRAWN BY  
KJW

DATE  
2/26/16

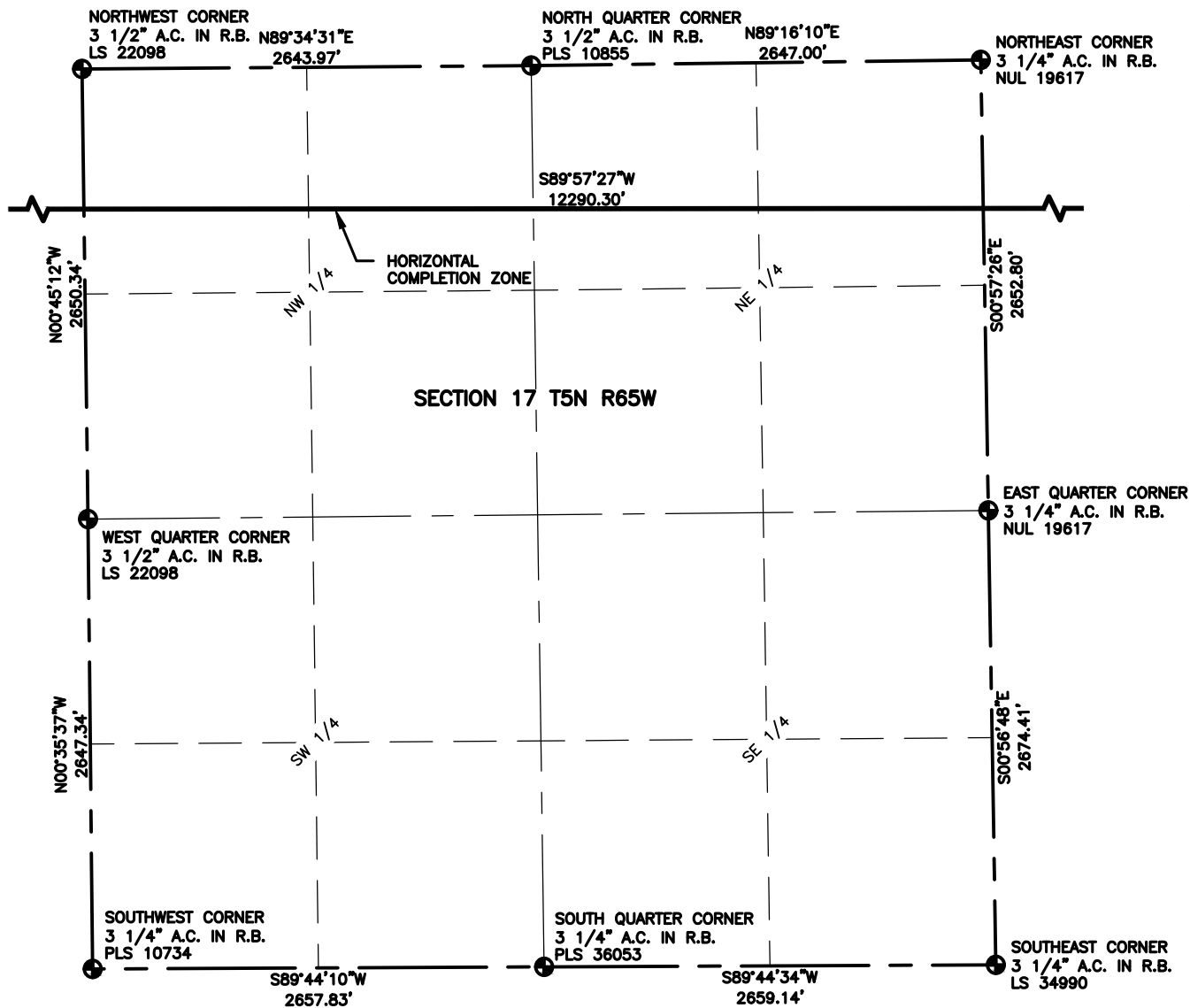
COGCC ID

PROJECT - TASK NUMBER  
0215036.00

BOOK AND PAGE  
MRI-04 PG-6

**SURFACE - LOCATION**  
SW /4, NW /4, SEC 15 T5N  
R65W

PATH/FILENAME P:\\_Engineering\0215036 Vetting 15 H\DRAWINGS\EXHIBITS\0215036EXWP-04-A.dwg



### LEGEND

- |   |                   |
|---|-------------------|
| △ COMPUTED ALIQUOT CORNER FROM MONUMENT RECORDS | ⊙ PROPOSED WELL   |
| ⊕ ALIQUOT CORNER                                | A.C. ALUMINUM CAP |
| ■ COMPUTED ALIQUOT CORNER FROM GLO RECORDS      | R.B. RANGE BOX    |
| ⊖ BOTTOM HOLE                                   |                   |

### NOTES:

- DISTANCES ARE MEASURED PERPENDICULAR TO NEAREST SECTION LINE AND ARE SHOWN ON THE SAME SIDE OF THE SECTION LINE WHERE THE WELL IS LOCATED.
- THIS MAP DOES NOT REPRESENT A MONUMENTED BOUNDARY SURVEY. SIXTEENTH CORNER LOCATIONS ARE COMPUTED, UNLESS OTHERWISE NOTED.
- BOTTOM HOLE LOCATIONS AND HORIZONTAL COMPLETION ZONE PROVIDED BY OTHERS.



0 1000

SCALE: 1"= 1000'  
U.S. SURVEY FEET



**LAMP RYNEARSON**  
& ASSOCIATES

4715 Innovation Drive 970.226.0342 | P  
Fort Collins, CO 80525 970.226.0879 | F  
www.LRA-Inc.com

PROPOSED WELL LOCATION EXHIBIT  
VT-LDS C2-16-18  
3 OF 4

**DRAWN BY**  
KJW  
**PATH/FILENAME**

**DATE**  
2/26/16

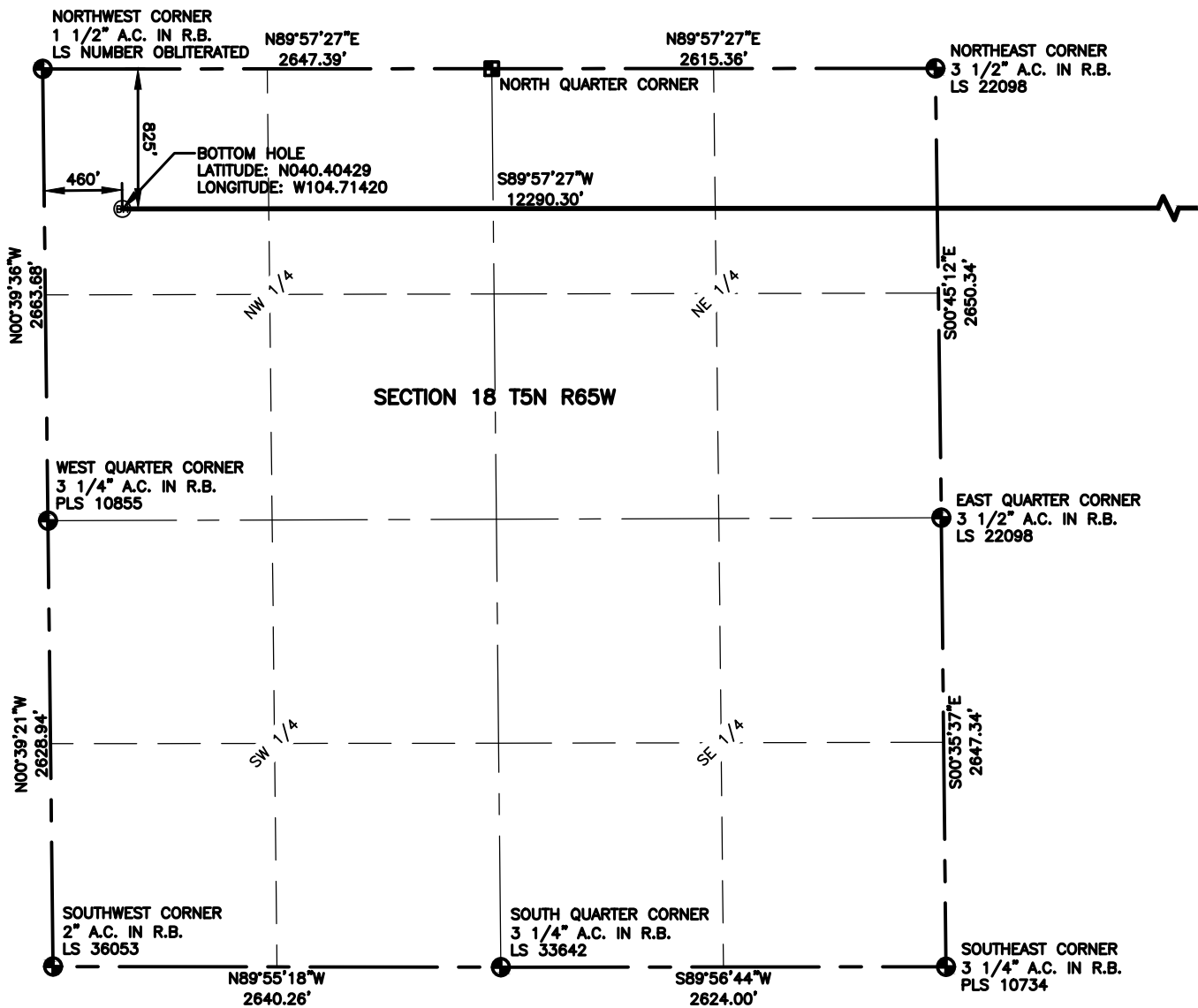
**COGCC ID**

**PROJECT - TASK NUMBER**  
0215036.00

**BOOK AND PAGE**  
MRI-04 PG-6

**SURFACE - LOCATION**  
SW /4, NW /4, SEC 15 T5N  
R65W

P:\\_Engineering\0215036 Vetting 15 H\DRAWINGS\EXHIBITS\0215036EXWP-04-B.dwg



### LEGEND

- |   |                   |
|---|-------------------|
| △ COMPUTED ALIQUOT CORNER FROM MONUMENT RECORDS | ⊙ PROPOSED WELL   |
| ⊕ ALIQUOT CORNER                                | A.C. ALUMINUM CAP |
| ■ COMPUTED ALIQUOT CORNER FROM GLO RECORDS      | R.B. RANGE BOX    |
| ⊖ BOTTOM HOLE                                   |                   |

### NOTES:

- DISTANCES ARE MEASURED PERPENDICULAR TO NEAREST SECTION LINE AND ARE SHOWN ON THE SAME SIDE OF THE SECTION LINE WHERE THE WELL IS LOCATED.
- THIS MAP DOES NOT REPRESENT A MONUMENTED BOUNDARY SURVEY. SIXTEENTH CORNER LOCATIONS ARE COMPUTED, UNLESS OTHERWISE NOTED.
- BOTTOM HOLE LOCATIONS AND HORIZONTAL COMPLETION ZONE PROVIDED BY OTHERS.



0 1000

SCALE: 1"= 1000'  
U.S. SURVEY FEET



**LAMP RYNEARSON**  
& ASSOCIATES

4715 Innovation Drive 970.226.0342 | P  
Fort Collins, CO 80525 970.226.0879 | F  
www.LRA-Inc.com

PROPOSED WELL LOCATION EXHIBIT  
VT-LDS C2-16-18  
4 OF 4

**DRAWN BY**  
KJW  
**PATH\FILENAME**

**DATE**  
2/26/16

**COGCC ID**

**PROJECT - TASK NUMBER**  
0215036.00

**BOOK AND PAGE**  
MRI-04 PG-6

**SURFACE - LOCATION**  
SW /4, NW /4, SEC 15 T5N  
R65W

P:\\_Engineering\0215036 Vetting 15 H\DRAWINGS\EXHIBITS\0215036EXWP-04-C.dwg