



June 1, 2016

VIA ELECTRONIC TRANSMITTAL

Director Matt Lepore  
Colorado Oil and Gas Conservation Commission  
1120 Lincoln Street Suite 801  
Denver, Colorado 80203

RE: Rule 318.A.e.  
VT-LDS 1-16-18  
VT-LDS C2-16-18  
VT-LDS 2-16-18  
VT-LDS 3-16-18  
VT-LDS C3-16-18  
VT-LDS 4-16-18  
VT-LDS 5-16-18  
VT-LDS C4-16-18

Surface Location: SWNW, Section 15, Township 5 North, Range 65 West, Weld County, CO

Dear Mr. Lepore,

Extraction Oil and Gas is planning to drill the captioned horizontal wells in accordance with the provision of COGCC Rule 318A.e.

The proposed wellbore spacing unit consists of:

Section 18-5N-66W: N/2  
Section 17-5N-66W: N/2  
Section 16-5N-66W: NW/4

The spacing unit is an 800-acre wellbore spacing unit for the Niobrara and Codell formations.

Extraction Oil and Gas hereby certifies to the Director that all Owners within the proposed spacing unit above were notified and 30 days have passed without objection.

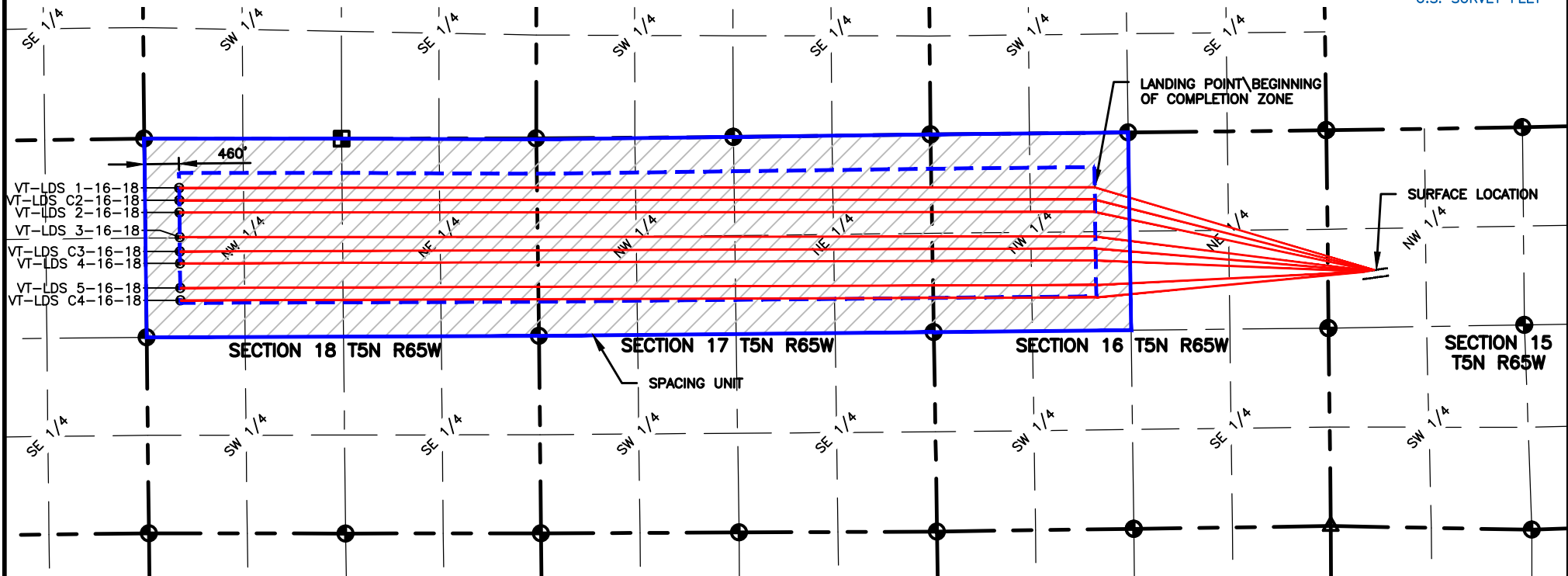
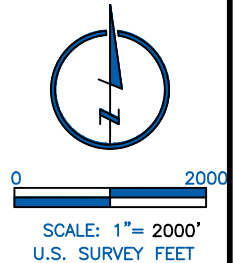
If you have any questions or issues regarding this permit, please contact the undersigned at 720-481-2379.

Respectfully,

Alyssa Andrews  
Regulatory Analyst  
Extraction Oil and Gas

**NAME: LDS**  
**SPACING UNIT: N/2 SEC 18, N/2 SEC 17, NW/4 SEC 16, T5N, 65W UNIT ACREAGE: 800**

WELL NAME	SURFACE LOCATION				LANDING POINT\BEGIN HORIZONTAL COMPLETION ZONE				BOTTOM HOLE\END HORIZONTAL COMPLETION ZONE				COMPLETION ZONE BEARING	COMPLETION ZONE LENGTH
	DIST.	DIR.	DIST.	DIR.	DIST.	DIR.	DIST.	DIR.	DIST.	DIR.	DIST.	DIR.		
VT-LDS 1-16-18	1886'	FNL	626'	FWL	731'	FNL	2192'	FWL	660'	FNL	460'	FWL	S89°57'27"W	12289.78'
VT-LDS C2-16-18	1889'	FNL	602'	FWL	896'	FNL	2192'	FWL	825'	FNL	460'	FWL	S89°57'27"W	12290.30'
VT-LDS 2-16-18	1892'	FNL	578'	FWL	1061'	FNL	2191'	FWL	990'	FNL	460'	FWL	S89°57'27"W	12290.82'
VT-LDS 3-16-18	1895'	FNL	554'	FWL	1391	FNL	2190'	FWL	1320'	FNL	460'	FWL	S89°57'27"W	12291.87'
VT-LDS C3-16-18	1898'	FNL	531'	FWL	1552	FNL	2190'	FWL	1512'	FNL	460'	FWL	S89°48'42"W	12292.08'
VT-LDS 4-16-18	1901'	FNL	507'	FWL	1712	FNL	2190'	FWL	1672'	FNL	460'	FWL	S89°48'42"W	12292.59'
VT-LDS 5-16-18	1904'	FNL	483'	FWL	2042	FNL	2189'	FWL	2002'	FNL	460'	FWL	S89°48'42"W	12293.63'
VT-LDS C4-16-18	1907'	FNL	459'	FWL	2207	FNL	2189'	FWL	2167'	FNL	460'	FWL	S89°48'42"W	12294.15'



**LAMP RYNEARSON**  
**& ASSOCIATES**

4715 Innovation Drive 970.226.0342 | P  
 Fort Collins, CO 80525 970.226.0879 | F  
[www.LRA-Inc.com](http://www.LRA-Inc.com)

PLANNED SPACING UNIT EXHIBIT  
 VETTING 15-H  
 LDS SPACING UNIT

**LEGEND**

- ⊕ ALIQUOT CORNER
- ⊕⊕ BOTTOM HOLE
- △ COMPUTED ALIQUOT CORNER FROM MONUMENT ACCESSORIES
- COMPUTED FROM GLO RECORDS
- SECTION LINE
- SIXTEENTH LINE
- QUARTER SECTION LINE

**DRAWN BY** KJW  
**DATE** 10/30/15  
**COGCC ID**  
**PROJECT - TASK NUMBER** 0215036.00  
**BOOK AND PAGE** MRI-04 PG-6

**SURFACE - LOCATION**  
 SW /4, NW /4, SEC 15 T5N  
 R65W

**PATH\FILENAME** P:\\_Engineering\0215036 Vetting 15 H\DRAWINGS\EXHIBITS\0215036PSU-LDS.dwg