

**LAMP RYNEARSON**  
 & ASSOCIATES

4715 Innovation Drive 970.226.0342 | P  
 Fort Collins, CO 80525 970.226.0879 | F  
 www.LRA-Inc.com

**DRAWN BY**  
 KJW  
**PATH/FILENAME**

**DATE**  
 2/26/16

**COGCC ID**

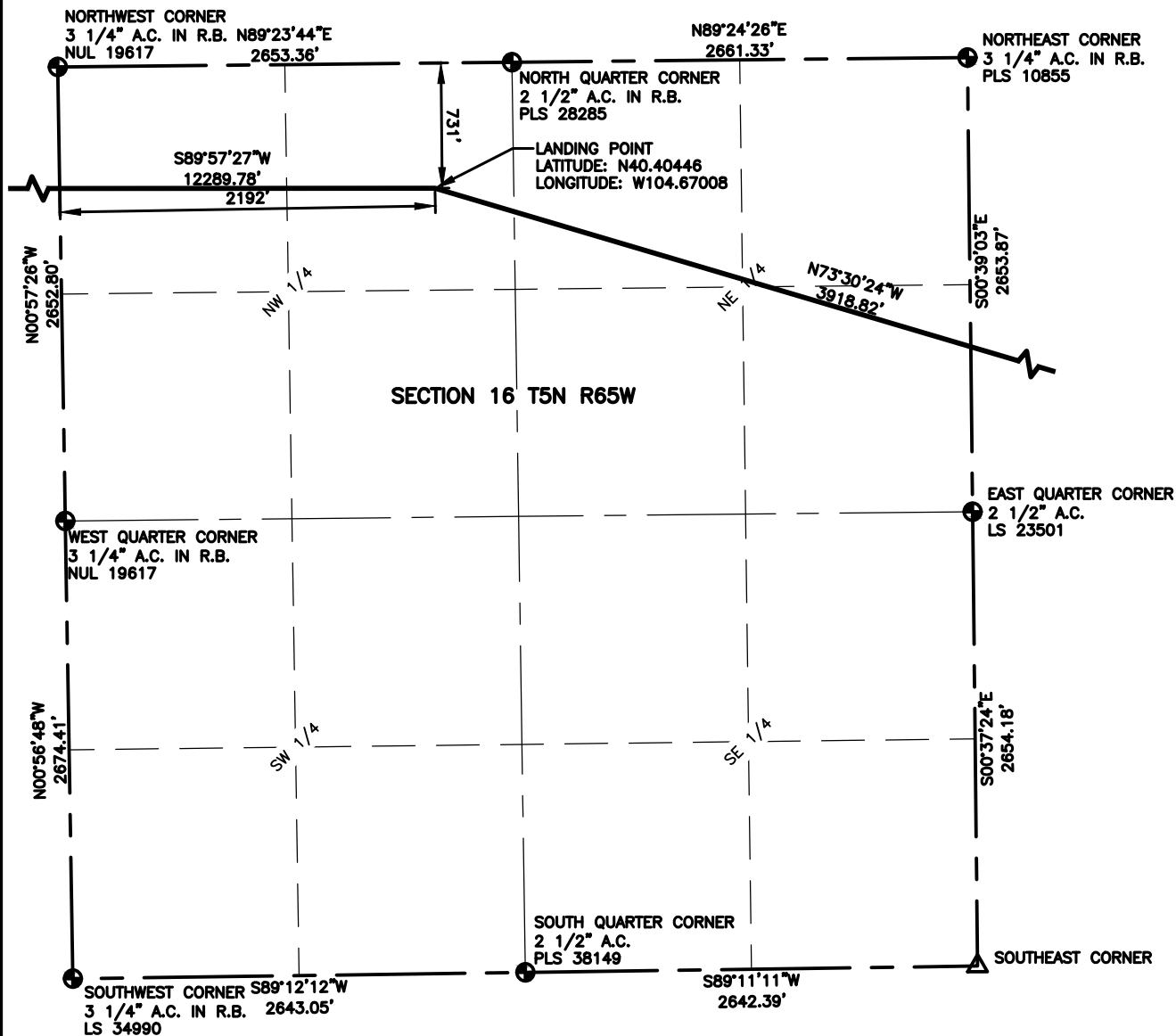
**PROJECT - TASK NUMBER**  
 0215036.00

**BOOK AND PAGE**  
 MRI-04 PG-6

**SURFACE - LOCATION**

SW /4, NW /4, SEC 15 T5N R65W

P:\\_Engineering\0215036 Vetting 15 H\DRAWINGS\EXHIBITS\0215036EXWP-03.dwg



**LAMP RYNEARSON**  
& ASSOCIATES

4715 Innovation Drive 970.226.0342 | P  
Fort Collins, CO 80525 970.226.0879 | F  
www.LRA-Inc.com

PROPOSED WELL LOCATION EXHIBIT  
VT-LDS 1-16-18  
2 OF 4

**DRAWN BY**  
KJW  
**PATH/FILENAME**

**DATE**  
2/26/16

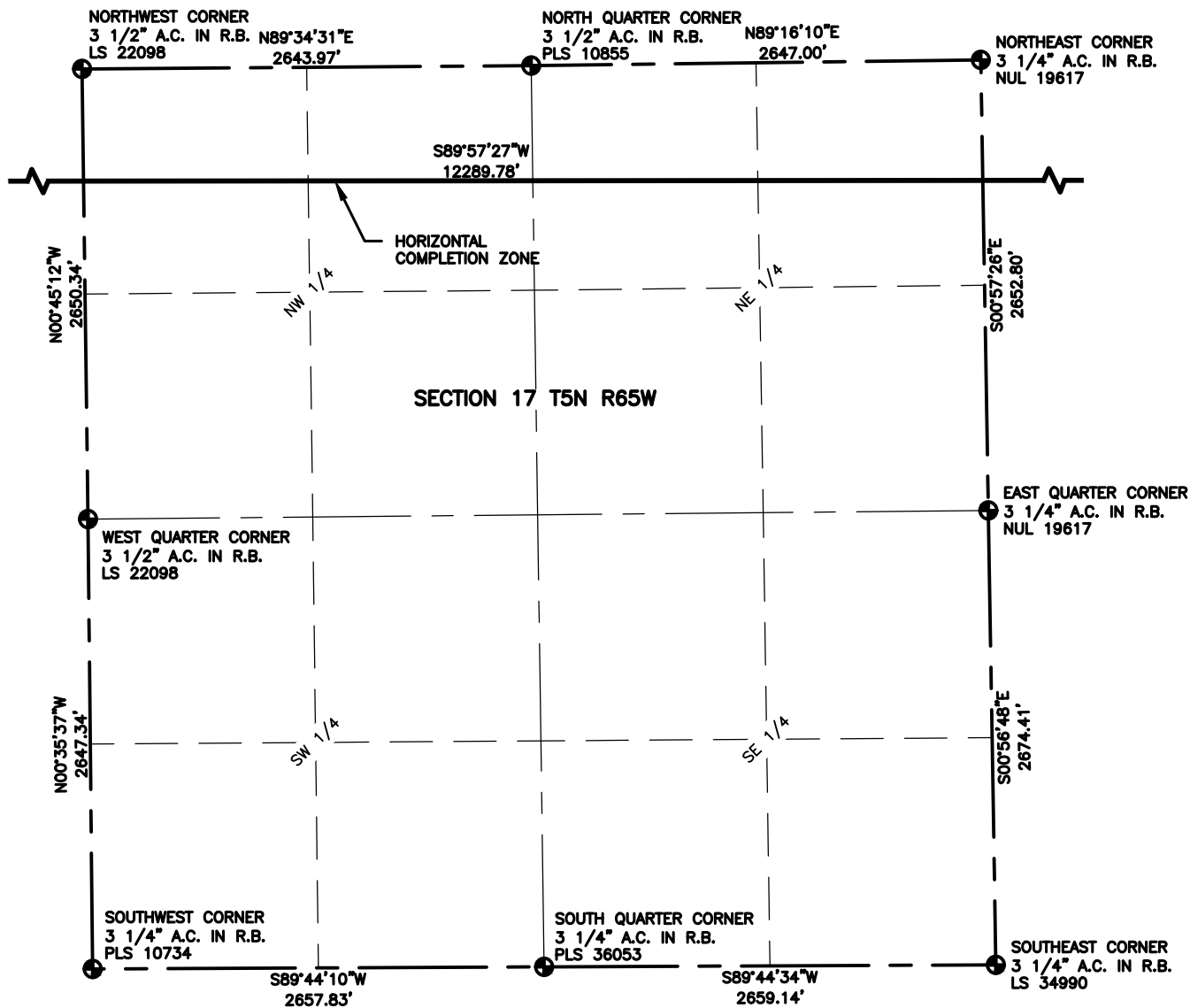
**COGCC ID**

**PROJECT - TASK NUMBER**  
0215036.00

**BOOK AND PAGE**  
MRI-04 PG-6

**SURFACE - LOCATION**  
SW /4, NW /4, SEC 15 T5N  
R65W

P:\\_Engineering\0215036 Vetting 15 H\DRAWINGS\EXHIBITS\0215036EXWP-03-A.dwg



### LEGEND

- |   |                   |
|---|-------------------|
| △ COMPUTED ALIQUOT CORNER FROM MONUMENT RECORDS | ⊙ PROPOSED WELL   |
| ⊕ ALIQUOT CORNER                                | A.C. ALUMINUM CAP |
| ■ COMPUTED ALIQUOT CORNER FROM GLO RECORDS      | R.B. RANGE BOX    |
| ⊖ BOTTOM HOLE                                   |                   |

### NOTES:

- DISTANCES ARE MEASURED PERPENDICULAR TO NEAREST SECTION LINE AND ARE SHOWN ON THE SAME SIDE OF THE SECTION LINE WHERE THE WELL IS LOCATED.
- THIS MAP DOES NOT REPRESENT A MONUMENTED BOUNDARY SURVEY. SIXTEENTH CORNER LOCATIONS ARE COMPUTED, UNLESS OTHERWISE NOTED.
- BOTTOM HOLE LOCATIONS AND HORIZONTAL COMPLETION ZONE PROVIDED BY OTHERS.



0 1000

SCALE: 1"= 1000'  
U.S. SURVEY FEET



**LAMP RYNEARSON**  
& ASSOCIATES

4715 Innovation Drive 970.226.0342 | P  
Fort Collins, CO 80525 970.226.0879 | F  
www.LRA-Inc.com

PROPOSED WELL LOCATION EXHIBIT  
VT-LDS 1-16-18  
3 OF 4

**DRAWN BY**  
KJW  
**PATH/FILENAME**

**DATE**  
2/26/16

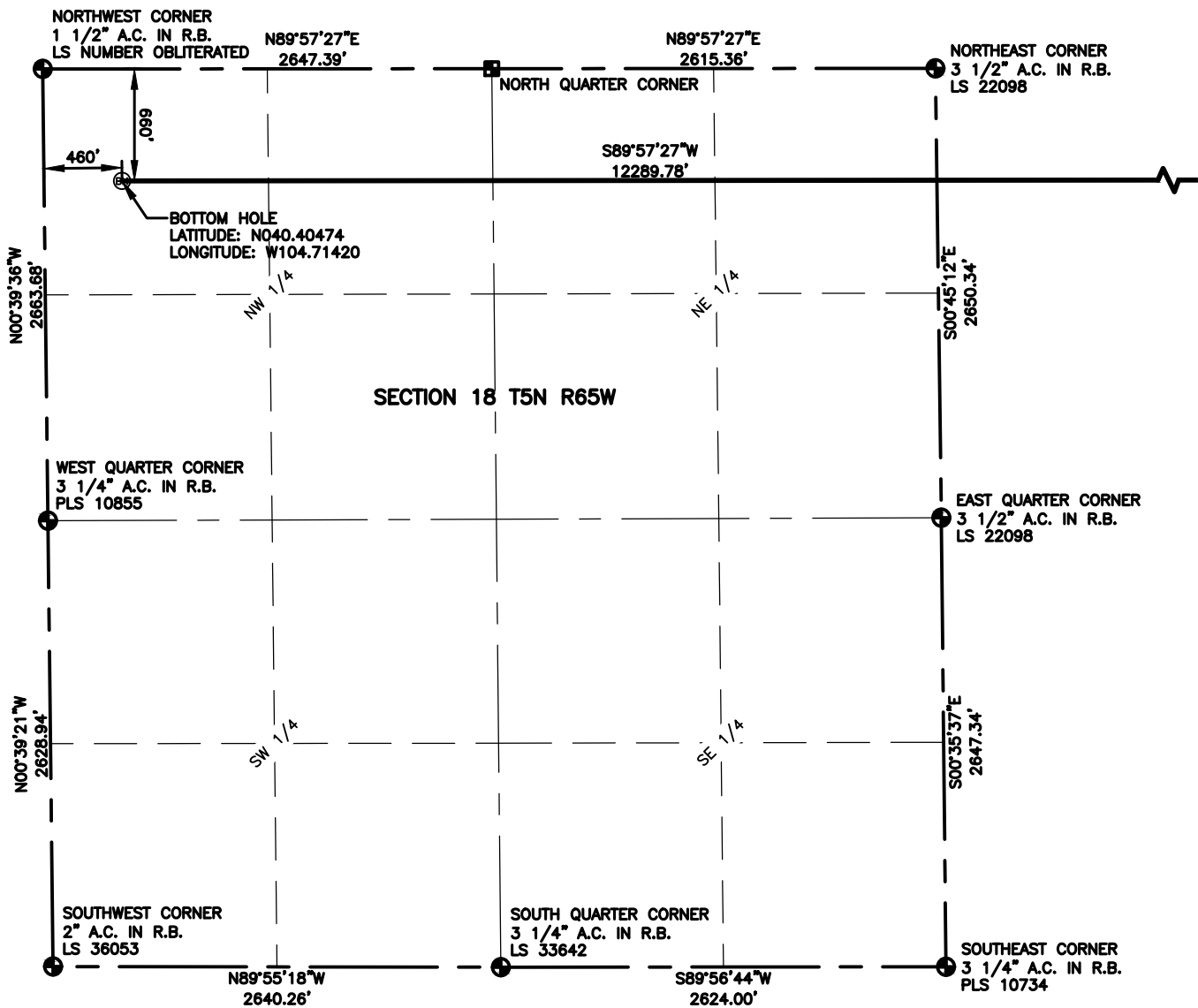
**COGCC ID**

**PROJECT - TASK NUMBER**  
0215036.00

**BOOK AND PAGE**  
MRI-04 PG-6

**SURFACE - LOCATION**  
SW /4, NW /4, SEC 15 T5N  
R65W

P:\\_Engineering\0215036 Vetting 15 H\DRAWINGS\EXHIBITS\0215036EXWP-03-B.dwg



### LEGEND

- |   |   |      |               |
|---|---|------|---------------|
| △ | COMPUTED ALIQUOT CORNER FROM MONUMENT RECORDS | ⊙    | PROPOSED WELL |
| ⊙ | ALIQUOT CORNER                                | A.C. | ALUMINUM CAP  |
| ⊙ | COMPUTED ALIQUOT CORNER FROM GLO RECORDS      | R.B. | RANGE BOX     |
| ⊙ | BOTTOM HOLE                                   |      |               |

### NOTES:

- DISTANCES ARE MEASURED PERPENDICULAR TO NEAREST SECTION LINE AND ARE SHOWN ON THE SAME SIDE OF THE SECTION LINE WHERE THE WELL IS LOCATED.
- THIS MAP DOES NOT REPRESENT A MONUMENTED BOUNDARY SURVEY. SIXTEENTH CORNER LOCATIONS ARE COMPUTED, UNLESS OTHERWISE NOTED.
- BOTTOM HOLE LOCATIONS AND HORIZONTAL COMPLETION ZONE PROVIDED BY OTHERS.



0 1000

SCALE: 1"= 1000'  
U.S. SURVEY FEET



**LAMP RYNEARSON**  
& ASSOCIATES

4715 Innovation Drive 970.226.0342 | P  
Fort Collins, CO 80525 970.226.0879 | F  
www.LRA-Inc.com

PROPOSED WELL LOCATION EXHIBIT  
VT-LDS 1-16-18  
4 OF 4

DRAWN BY  
KJW  
PATH\FILENAME

DATE  
2/26/16

COGCC ID

PROJECT - TASK NUMBER  
0215036.00

BOOK AND PAGE  
MRI-04 PG-6

SURFACE - LOCATION  
SW 1/4, NW 1/4, SEC 15 T5N  
R65W

P:\\_Engineering\0215036 Vetting 15 H\DRAWINGS\EXHIBITS\0215036EXWP-03-C.dwg