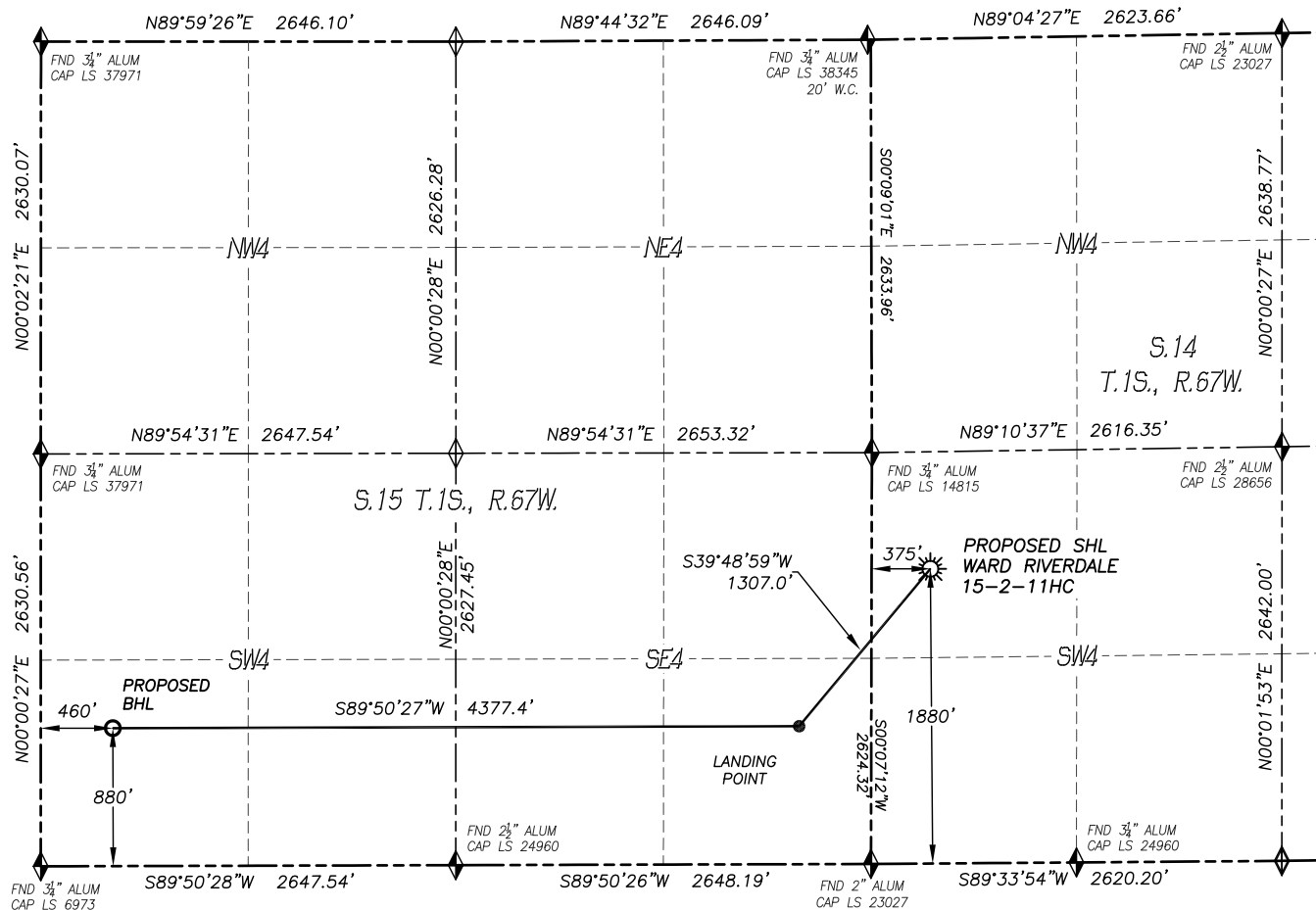


DALEY LAND SURVEYING, INC. PARKER, CO. 80134 303 953 9841
WELL LOCATION CERTIFICATE – WARD RIVERDALE 15-2-11HC
 SECTION 14, TOWNSHIP 1 SOUTH, RANGE 67 WEST OF THE 6TH PRINCIPAL MERIDIAN



NAD 83 LATITUDE AND LONGITUDE

SURFACE LOCATION:

LATITUDE: N39.96284°
 LONGITUDE: W104.86409°
 ELEVATION: 5114'
 FOOTAGE: 1880' FSL, 375' FWL
 QTR/QTR: NW4/SW4
 PDOP: 1.2

LANDING POINT:

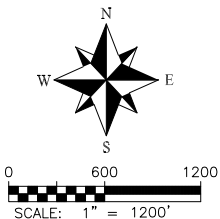
LATITUDE: N39.96009°
 LONGITUDE: W104.86707°
 FOOTAGE: 880' FSL, 460' FEL
 OF SEC.15-T1S-R67W

BOTTOM HOLE:

LATITUDE: N39.96005°
 LONGITUDE: W104.88268°
 FOOTAGE: 880' FSL, 460' FWL
 OF SEC.15-T1S-R67W

NEAREST CULTURAL ITEMS:

- BUILDING: 391'± NE
- BUILDING UNIT: 616'± W
- HIGH OCC. BLD. UNIT: 5280'±
- DES. OUTSIDE ACTIVITY AREA: 5280'±
- PUBLIC ROAD: 741'± NW
- ABOVE GROUND UTILITY: 354'± W
- RAILROAD: 5280'±
- PROPERTY LINE: 375'± W



LEGEND

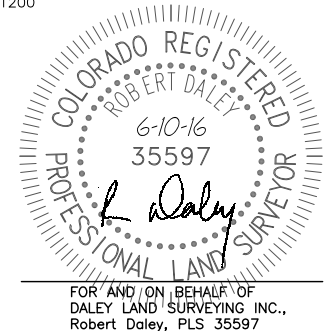
- FOUND MONUMENT AS DESCRIBED
- PROPOSED WELL
- EXISTING WELL
- BOTTOM HOLE
- ABANDONED WELL
- CALCULATED POSITION

IN ACCORDANCE WITH A REQUEST FROM WARD PETROLEUM., DALEY LAND SURVEYING, INC. HAS DETERMINED THE SURFACE LOCATION OF THE WARD RIVERDALE 15-2-11HC WELL TO BE 1880' FSL, 375' FWL, AS MEASURED AT NINETY (90) DEGREES FROM THE SECTION LINES OF SECTION 14, TOWNSHIP 1 SOUTH, RANGE 67 WEST, AND THE BOTTOM HOLE LOCATION TO BE 880' FSL, 460' FWL, AS MEASURED AT NINETY (90) DEGREES FROM THE SECTION LINES OF SECTION 15, TOWNSHIP 1 SOUTH, RANGE 67 WEST, OF THE 6TH PRINCIPAL MERIDIAN, ADAMS COUNTY, COLORADO.

I HEREBY STATE THAT THIS WELL LOCATION CERTIFICATE WAS PREPARED BY ME OR UNDER MY DIRECT SUPERVISION, THAT THE WORK WAS COMPLETED ON 10/2/2014 FOR AND ON BEHALF OF WARD PETROLEUM, AND THAT THIS MAP DOES NOT REPRESENT A BOUNDARY SURVEY, IT IS NOT A LAND SURVEY PLAT OR AN IMPROVEMENT SURVEY PLAT AND IT IS NOT TO BE RELIED UPON FOR THE ESTABLISHMENT OF FENCE, BUILDING OR OTHER FUTURE IMPROVEMENT LINES.

NOTES:

- BEARINGS FOR THIS MAP ARE ASSUMED AND BASED UPON GPS OBSERVATIONS MADE BETWEEN MONUMENTS LOCATED AT THE SOUTHWEST CORNER AND WEST QUARTER CORNER OF SECTION 14, T.1S., R.67W.
- HORIZONTAL DATUM IS NAD83.
- VERTICAL DATUM IS NAVD88 AND ORIGINATES FROM THE LOCAL C.O.R.S. NETWORK, UTILIZING THE GEOID09 MODEL.
- SEE LOCATION DRAWING FOR VISIBLE IMPROVEMENTS WITHIN 500' OF PROPOSED DISTURBED AREA.
- SURFACE USE: NON AGRICULTURAL.
- INST. OPERATOR: TREVOR DALEY



FOR AND ON BEHALF OF
 DALEY LAND SURVEYING INC.,
 Robert Daley, PLS 35597