

LAMP RYNEARSON & ASSOCIATES

4715 Innovation Drive 970.226.0342 | P
 Fort Collins, CO 80525 970.226.0879 | F
 www.LRA-Inc.com

PROPOSED WELL LOCATION EXHIBIT
 VETTING 12
 1 OF 3

DRAWN BY
 JMC

DATE
 5/26/16

COGCC ID

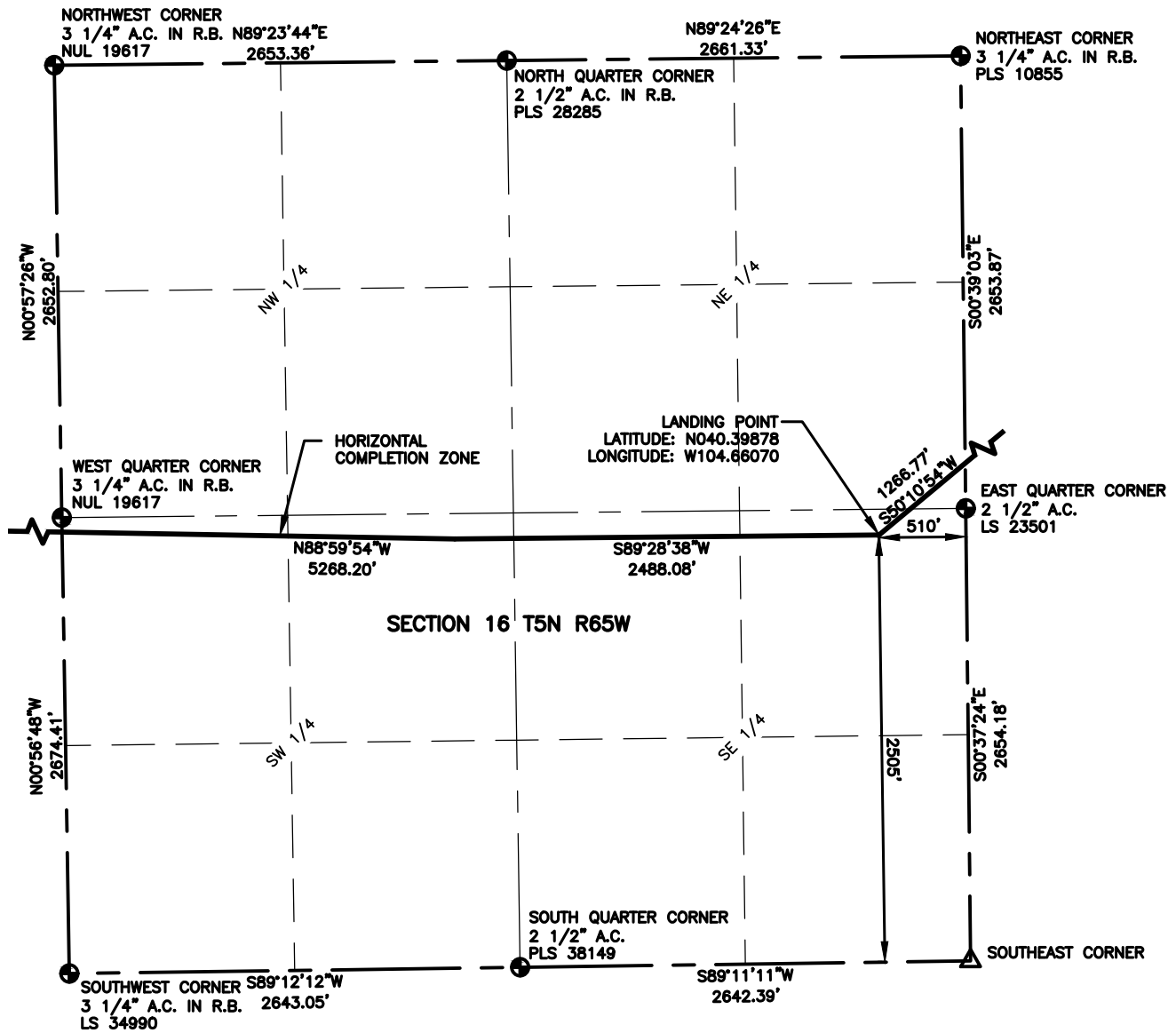
PROJECT - TASK NUMBER
 0215036.00

BOOK AND PAGE
 MRI-04 PG-6

SURFACE - LOCATION

SW /4, NW /4, SEC 15 T5N R65W

PATH\FILENAME P:_Engineering\0215036 Vetting 15 H\DRAWINGS\EXHIBITS\0215036EXWP-12.dwg



LEGEND

- | | | | |
|---|---|------|---------------|
| △ | COMPUTED ALIQUOT CORNER FROM MONUMENT RECORDS | ⊙ | PROPOSED WELL |
| ⊙ | ALIQUOT CORNER | A.C. | ALUMINUM CAP |
| ■ | COMPUTED ALIQUOT CORNER FROM GLO RECORDS | R.B. | RANGE BOX |
| ⊕ | BOTTOM HOLE | | |

NOTES:

- DISTANCES ARE MEASURED PERPENDICULAR TO NEAREST SECTION LINE AND ARE SHOWN ON THE SAME SIDE OF THE SECTION LINE WHERE THE WELL IS LOCATED.
- THIS MAP DOES NOT REPRESENT A MONUMENTED BOUNDARY SURVEY. SIXTEENTH CORNER LOCATIONS ARE COMPUTED, UNLESS OTHERWISE NOTED.
- BOTTOM HOLE LOCATIONS AND HORIZONTAL COMPLETION ZONE PROVIDED BY OTHERS.



0 1000

SCALE: 1"= 1000'
U.S. SURVEY FEET



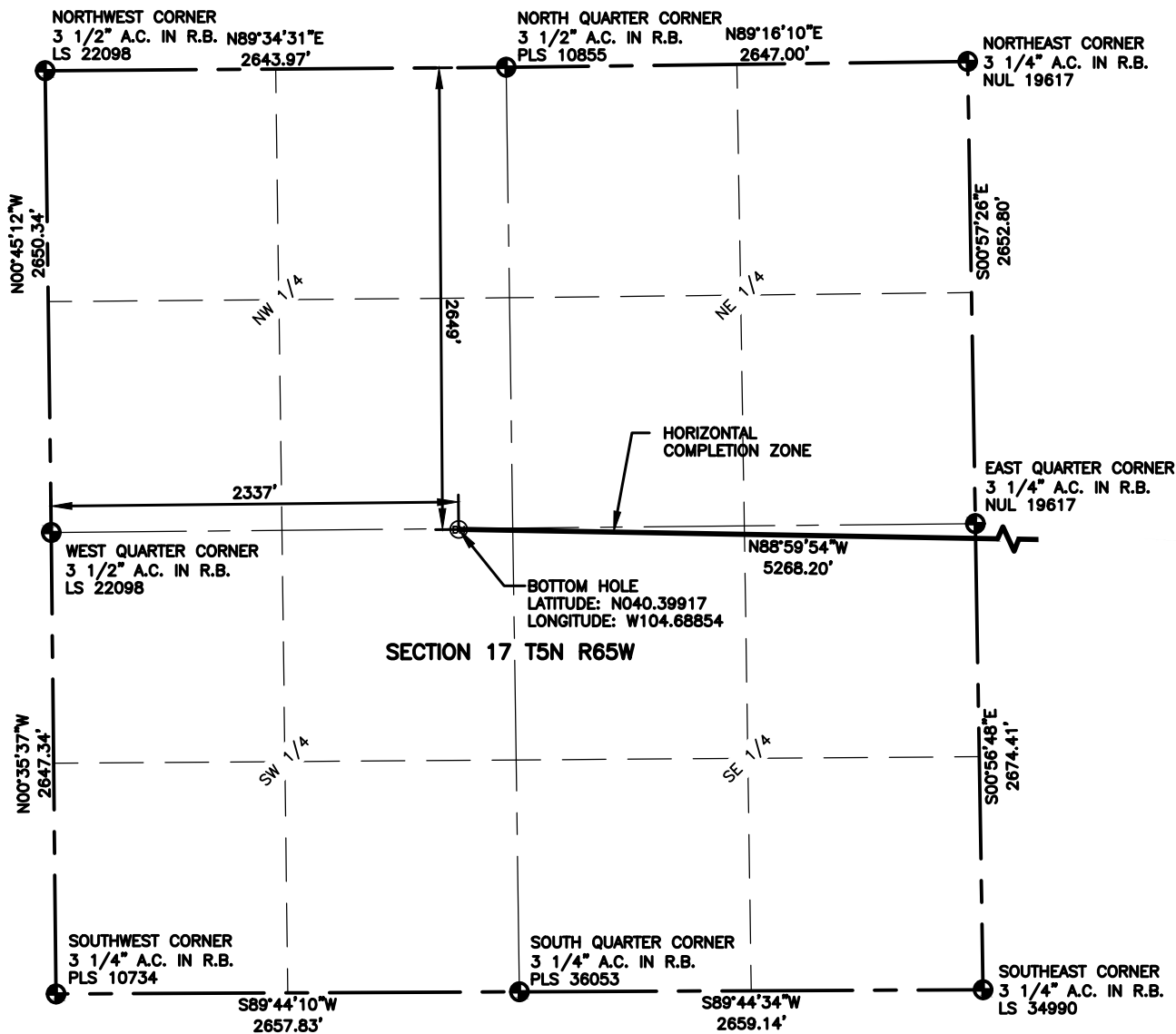
LAMP RYNEARSON
& ASSOCIATES

4715 Innovation Drive 970.226.0342 | P
Fort Collins, CO 80525 970.226.0879 | F
www.LRA-Inc.com

PROPOSED WELL LOCATION EXHIBIT
VETTING 12
2 OF 3

DRAWN BY	DATE	COGCC ID	PROJECT - TASK NUMBER	BOOK AND PAGE	SURFACE - LOCATION
JMC	5/26/16		0215036.00	MRI-04 PG-6	SW /4, NW /4, SEC 15 T5N R65W

PATH\FILENAME P:_Engineering\0215036 Vetting 15 H\DRAWINGS\EXHIBITS\0215036EXWP-12-A.dwg



LEGEND

- △ COMPUTED ALIQUOT CORNER FROM MONUMENT RECORDS
- ⊙ PROPOSED WELL
- ⊕ ALIQUOT CORNER
- A.C. ALUMINUM CAP
- COMPUTED ALIQUOT CORNER FROM GLO RECORDS
- R.B. RANGE BOX
- ⊙ BOTTOM HOLE

NOTES:

- DISTANCES ARE MEASURED PERPENDICULAR TO NEAREST SECTION LINE AND ARE SHOWN ON THE SAME SIDE OF THE SECTION LINE WHERE THE WELL IS LOCATED.
- THIS MAP DOES NOT REPRESENT A MONUMENTED BOUNDARY SURVEY. SIXTEENTH CORNER LOCATIONS ARE COMPUTED, UNLESS OTHERWISE NOTED.
- BOTTOM HOLE LOCATIONS AND HORIZONTAL COMPLETION ZONE PROVIDED BY OTHERS.



0 1000

SCALE: 1"= 1000'
U.S. SURVEY FEET



LAMP RYNEARSON
& ASSOCIATES

4715 Innovation Drive 970.226.0342 | P
Fort Collins, CO 80525 970.226.0879 | F
www.LRA-Inc.com

PROPOSED WELL LOCATION EXHIBIT
VETTING 12
3 OF 3

DRAWN BY
JMC
PATH/FILENAME

DATE
5/56/16

COGCC ID

PROJECT - TASK NUMBER
0215036.00

BOOK AND PAGE
MRI-04 PG-6

SURFACE - LOCATION
SW /4, NW /4, SEC 15 T5N
R65W

P:_Engineering\0215036 Vetting 15 H\DRAWINGS\EXHIBITS\0215036EXWP-12-B.dwg