



June 1, 2016

VIA ELECTRONIC TRANSMITTAL

Director Matt Lepore  
Colorado Oil and Gas Conservation Commission  
1120 Lincoln Street Suite 801  
Denver, Colorado 80203

RE: Rule 318.A.e.  
Vetting 12  
Vetting 13  
Vetting 14

Surface Location: SWNW, Section 15, Township 5 North, Range 65 West, Weld County, CO

Dear Mr. Lepore,

Extraction Oil and Gas is planning to drill the captioned horizontal wells in accordance with the provision of COGCC Rule 318A.e.

The proposed wellbore spacing unit consists of:  
Section 17-5N-65W: SE/4 NW/4, NE/4 SW/4, S/2 NE/4, N/2 SE/4;  
Section 16-5N-65W: S/2 N/2, N/2 S/2

The spacing unit is a 560-acre wellbore spacing unit.

Extraction Oil and Gas hereby certifies to the Director that all Owners within the proposed spacing unit above were notified and 30 days have passed without objection.

If you have any questions or issues regarding this permit, please contact the undersigned at 720-481-2379.

Respectfully,

Alyssa Andrews  
Regulatory Analyst  
Extraction Oil and Gas

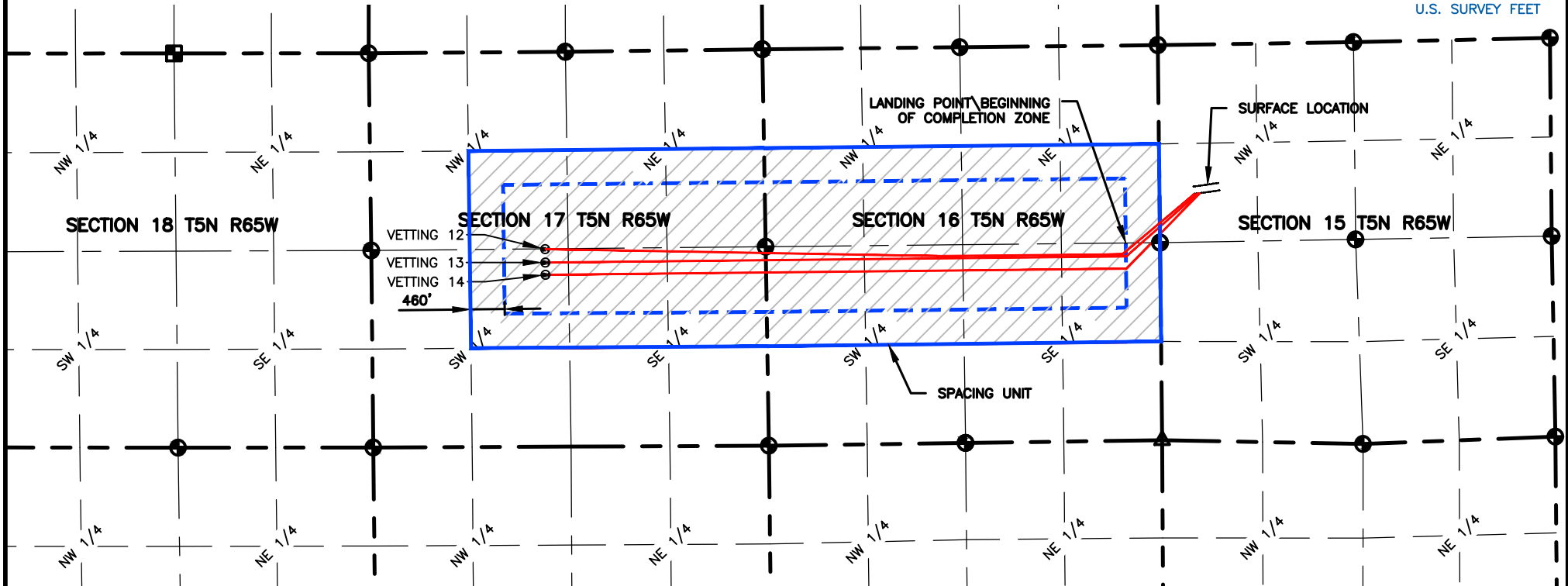
# NAME: VETTING NORTH

SPACING UNIT: SE/4 NW/4 & NE/4 SW/4 & S/2 NE/4 & N/2 SE/4 SEC 17, S/2 N/2 & N/2 S/2 SEC 16, T5N, 65W UNIT ACREAGE: 560

| WELL NAME  | SURFACE LOCATION |      |       |      | LANDING POINT\BEGIN<br>HORIZONTAL COMPLETION<br>ZONE |      |       |      | BOTTOM HOLE\END<br>HORIZONTAL COMPLETION<br>ZONE |      |       |      | COMPLETION<br>ZONE<br>BEARING | COMPLETION<br>ZONE LENGTH |
|------------|------------------|------|-------|------|--|------|-------|------|--|------|-------|------|-------------------------------|---------------------------|
|            | DIST.            | DIR. | DIST. | DIR. | DIST.  | DIR. | DIST. | DIR. | DIST.  | DIR. | DIST. | DIR. |                               |                           |
| VETTING 12 | 2006'            | FNL  | 472'  | FWL  | 2505'  | FSL  | 510'  | FEL  | 2649'  | FNL  | 2337' | FWL  | S89°28'38"W<br>N88°59'54"W    | 2488.08'<br>5268.20'      |
| VETTING 13 | 2003'            | FNL  | 496'  | FWL  | 2475'  | FSL  | 460'  | FEL  | 2475'  | FSL  | 2338' | FWL  | S89°24'14"W                   | 7803.12                   |
| VETTING 14 | 2000'            | FNL  | 520'  | FWL  | 2310'  | FSL  | 460'  | FEL  | 2310'  | FSL  | 2339' | FWL  | S89°24'14"W                   | 7802.54                   |



0 2000  
SCALE: 1"= 2000'  
U.S. SURVEY FEET



**LAMP RYNEARSON**  
& ASSOCIATES

4715 Innovation Drive 970.226.0342 | P  
Fort Collins, CO 80525 970.226.0879 | F  
www.LRA-Inc.com

PLANNED SPACING UNIT EXHIBIT  
VETTING 15-H  
VETTING NORTH SPACING UNIT

## LEGEND

- ⊕ ALIQUOT CORNER
- ⊗ BOTTOM HOLE
- △ COMPUTED ALIQUOT CORNER FROM MONUMENT ACCESSORIES
- COMPUTED FROM GLO RECORDS
- SECTION LINE
- - - SIXTEENTH LINE
- - - QUARTER SECTION LINE

DRAWN BY KJW  
DATE 5/26/16  
COGCC ID  
PROJECT - TASK NUMBER 0215036.00  
BOOK AND PAGE MRI-04 PG-6

SURFACE - LOCATION  
SW /4, NW /4, SEC 15 T5N  
R65W

P:\\_Engineering\0215036 Vetting 15 H\DRAWINGS\EXHIBITS\0215036PSU-Vetting-N.dwg