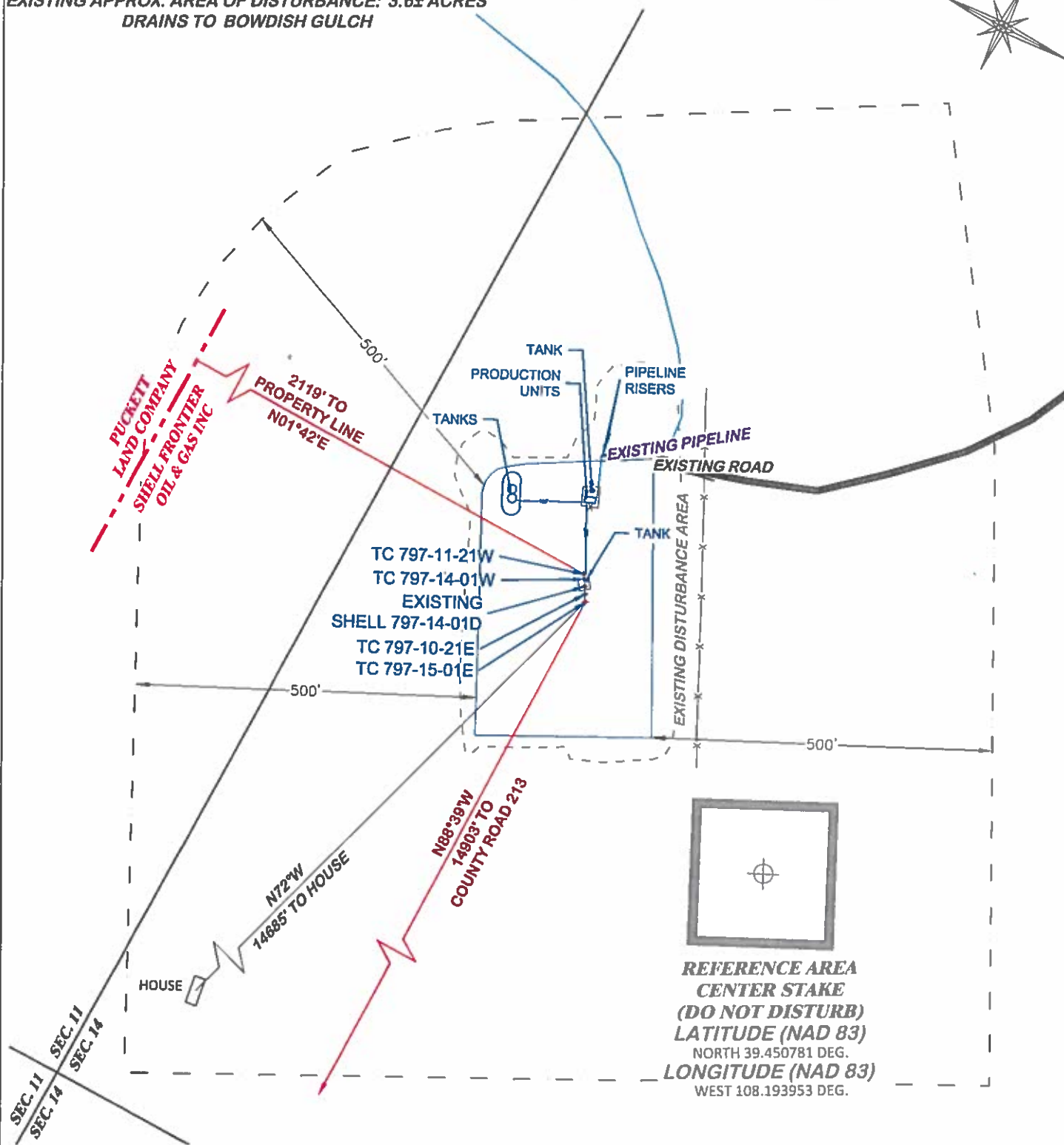


LOCATION DRAWING



**BEFORE DIGGING
CALL FOR
UTILITY LINE LOCATION**

SHELL 797-14-01D PAD



DRG

RIFFIN & ASSOCIATES, INC.
1414 ELK ST., ROCK SPRINGS, WY 82901

SCALE: 1"=200'

DRG JOB No. 20991**EXHIBIT 2D**

LOCATION DRAWING

LARAMIE ENERGY, LLC
SHELL 797-14-01D, TC 797-11-21W, 15-01E, 10-21E,
14-01W
NWNW, SECTION 14, T. 7 S., R. 97 W., 6th P.M.,
GARFIELD COUNTY, COLORADO