

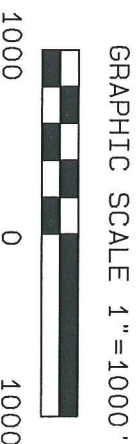
SandRidge Exploration & Production, LLC

BASIS OF BEARINGS:

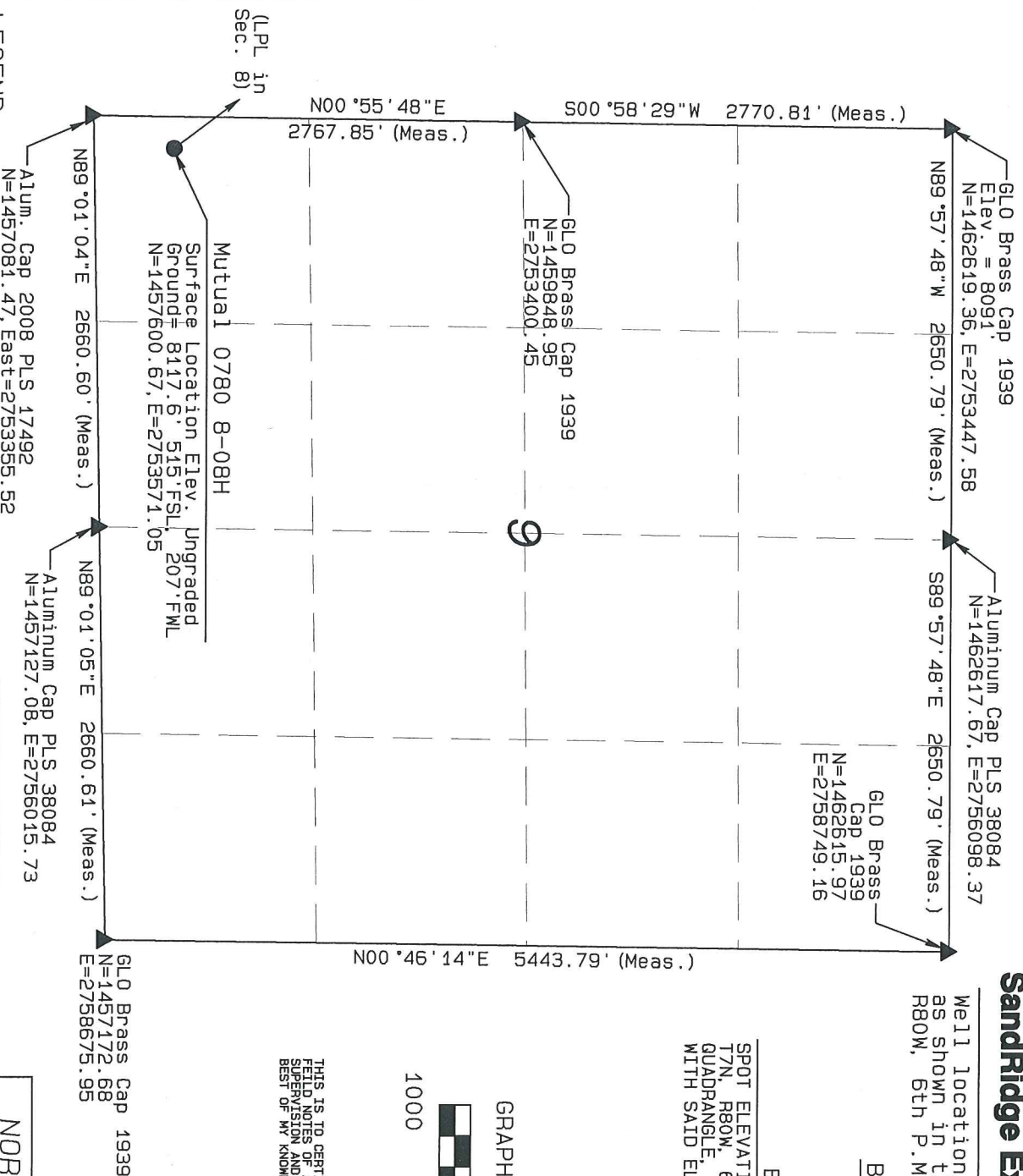
US STATE PLANE 1983
CO NORTH 0501 GRID

BASIS OF ELEVATION

SPOT ELEVATION AT THE NW CORNER OF SECTION 9,
T7N, R60W, 6TH PM, TAKEN FROM THE COALMONT
QUADRANGLE, USGS 7.5 MIN QUAD (TOPOGRAPHIC MAP)
WITH SAID ELEVATION MARKED AS BEING 8091 FEET.



THIS IS TO CERTIFY THAT THE ABOVE PLAT WAS PREPARED FROM FIELD NOTES OF ACTUAL SURVEYS MADE BY ME OR UNDER MY SUPERVISION AND THAT THE SAME ARE TRUE AND CORRECT TO THE BEST OF MY KNOWLEDGE AND BELIEF.



90° SYMBOL
FOUND CORNER
PROPOSED WELL
PROPOSED BHL/LPL

	NAD 83 (SURFACE LOCATION)
LATITUDE=40.586128 °N	
LONGITUDE=106.387262 °W	PDOP = 1.362
NAD 83 (LANDING POINT LOCATION)	
LATITUDE=40.588036 °N	
LONGITUDE=106.389180 °W	
NAD 83 (TARGET BOTTOM HOLE)	
LATITUDE=40.599035 °N	
LONGITUDE=106.389083 °W	

NORTH PARK ENGINEERING & CONSULTING, INC.

P.O. BOX 395
WALDEN, CO 80480
(970) 723-3725

DATE OF FIELD WORK: FEB 19, 2016 DRAWING COMPLETION: MAR 16, 2016
SURVEYED BY: BRM DRAWN BY: TKH CHECKED BY: BRM

T7N, R80W, 6th P.M.

SandRidge Exploration & Production, LLC

Bottom Hole Location, Mutual 0780 8-08H located as shown in the NE1/4NE1/4 of Section 8, T7N, R80W, 6th P.M., Jackson County, Colorado.

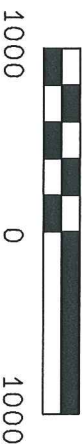
BASIS OF BEARINGS:

US STATE PLANE 1983
CO NORTH 0501 GRID

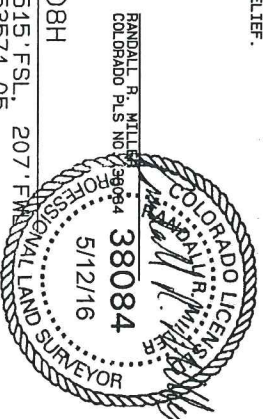
BASIS OF ELEVATION

SPOT ELEVATION AT THE NW CORNER OF SECTION 9, T7N, R80W, 6TH PM, TAKEN FROM THE COALMONT QUADRANGLE, USGS 7.5 MIN QUAD (TOPOGRAPHIC MAP) WITH SAID ELEVATION MARKED AS BEING 8091 FEET.

GRAPHIC SCALE 1"=1000'



THIS IS TO CERTIFY THAT THE ABOVE PLAT WAS PREPARED FROM FIELD SURVEY AND THAT THE SAME ARE TRUE AND CORRECT TO THE BEST OF MY KNOWLEDGE AND BELIEF.



NORTH PARK ENGINEERING & CONSULTING, INC.
P.O. BOX 395
WALDEN, CO 80460
(970) 723-3725

LEGEND

- 90° SYMBOL
- FOUND CORNER
- PROPOSED WELL
- PROPOSED BHL/LPL

NAD 83 (TARGET BOTTOM HOLE)	NAD 83 (SURFACE LOCATION)
LATITUDE=40.599035°N	LATITUDE=40.586128°N
LONGITUDE=106.389083°W	LONGITUDE=106.387262°W
	PDOP = 1.362
NAD 83 (LANDING POINT LOCATION)	
LATITUDE=40.588036°N	
LONGITUDE=106.389180°W	

DATE OF FIELD WORK: FEB 19, 2016	DRAWING COMPLETION: MAR 16, 2016
SURVEYED BY: RRM	DRAWN BY: TKH
	CHECKED BY: RRM

