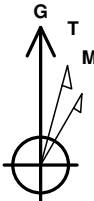
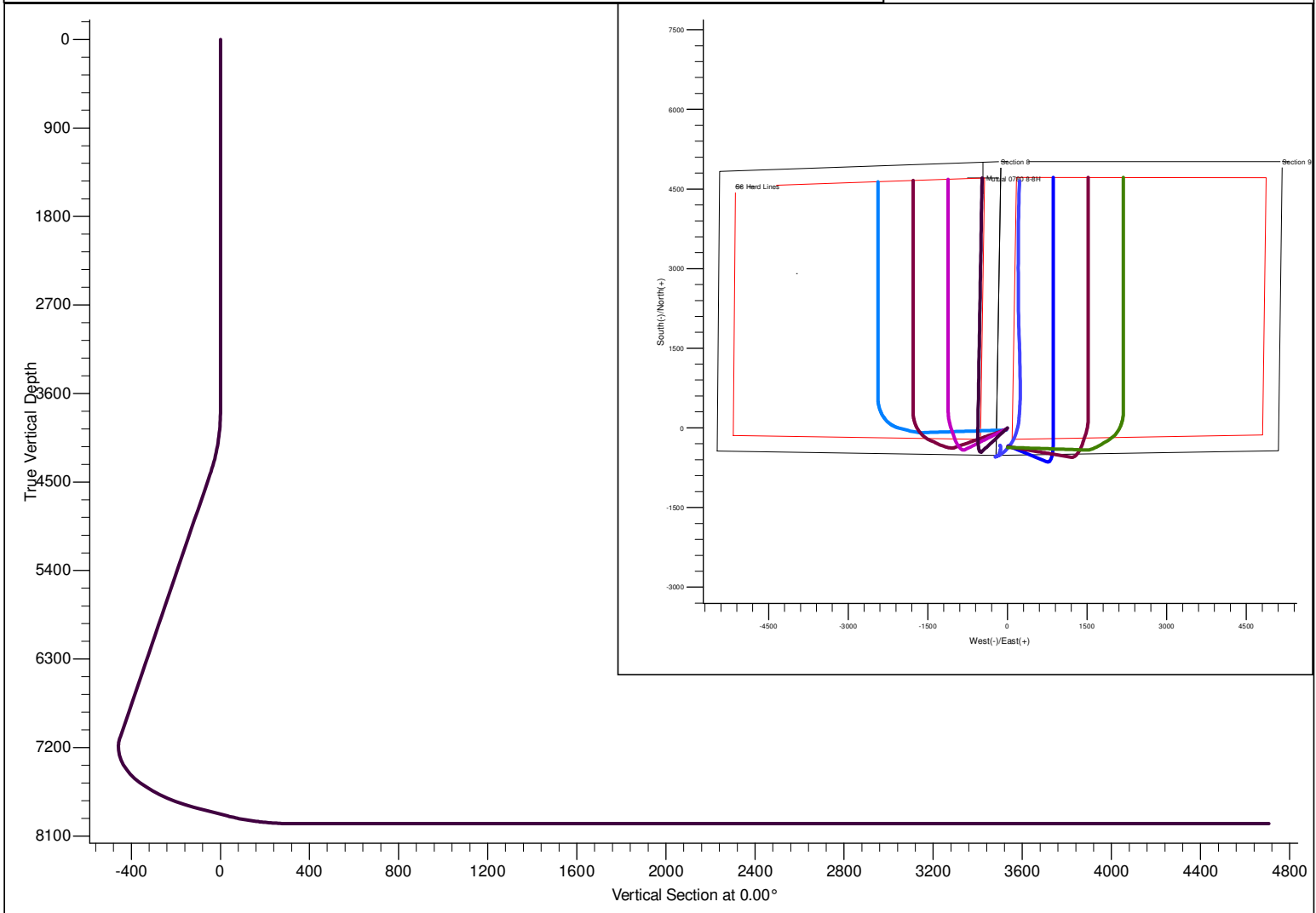


PROJECT DETAILS: North Park Basin								<div></div> <div>Azimuths to Grid North True North: 0.57° Magnetic North: 10.46°</div> <div>Magnetic Field Strength: 53192.2snT Dip Angle: 66.98° Date: 12/31/2009 Model: IGRF200510</div>	
Geodetic System: US State Plane 1983 Datum: North American Datum 1983 Ellipsoid: GRS 1980 Zone: Colorado Northern Zone  System Datum: Mean Sea Level									
FORMATION TOP DETAILS									
TVDP		PathMD		Path		Formation		DipAngleDipDir	
7528.0		7615.5				Niobrara		0.00	
								CASING DETAILS	
								No casing data is available	
DESIGN DETAILS: Design #1								<div>Project: North Park Basin Site: T7N-R80W-S9 Well: Mutual 0780 8-8H Wellbore: Wellbore #1 Design: Design #1</div>	
0' Vertical Section coordinates									
Type	Target	Azimuth	Origin	Type	N/S	E/W From	TVD		
Target		0.00	Slot		0.0	0.0	0.0		



SECTION DETAILS										
Sec	MD	Inc	Azi	TVD	+N/-S	+E/-W	Dleg	TFace	VSect	Target
1	0.0	0.00	0.00	0.0	0.0	0.0	0.00	0.00	0.0	
2	3800.0	0.00	0.00	3800.0	0.0	0.0	0.00	0.00	0.0	
3	4427.3	12.55	227.26	4422.3	-46.4	-50.2	2.00	227.26	-46.4	
4	7164.8	12.55	227.26	7094.4	-450.0	-487.0	0.00	0.00	-450.0	
5	8027.5	60.00	0.95	7821.2	-96.2	-558.5	8.00	137.88	-96.2	
6	8177.5	60.00	0.95	7896.2	33.6	-556.3	0.00	0.00	33.6	
7	8477.5	90.00	0.95	7973.0	320.1	-551.6	10.00	0.00	320.1	
8	12864.8	90.00	0.95	7973.0	4706.8	-478.8	0.00	0.00	4706.8	Mutual 8-8H