

T7N, R80W, 6th P.M.

SandRidge Exploration & Production, LLC

Bottom Hole Location, Mutual 0780 6-08H located as shown in the NW1/4NE1/4 of Section 8, T7N, R80W, 6th P.M., Jackson County, Colorado.

BASIS OF BEARINGS:

US STATE PLANE 1983
CO NORTH 0501 GRID

BASIS OF ELEVATION

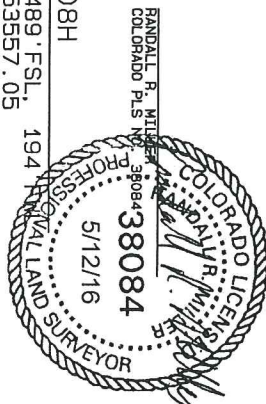
SPOT ELEVATION AT THE NW CORNER OF SECTION 9, T7N, R80W, 6TH PM, TAKEN FROM THE CALMONT QUADRANGLE, USGS 7.5 MIN QUAD (TOPOGRAPHIC MAP) WITH SAID ELEVATION MARKED AS BEING 8091 FEET.

GL0 Brass Cap 1939
N=1459848.95
E=2753400.45

GRAPHIC SCALE 1"=1000'



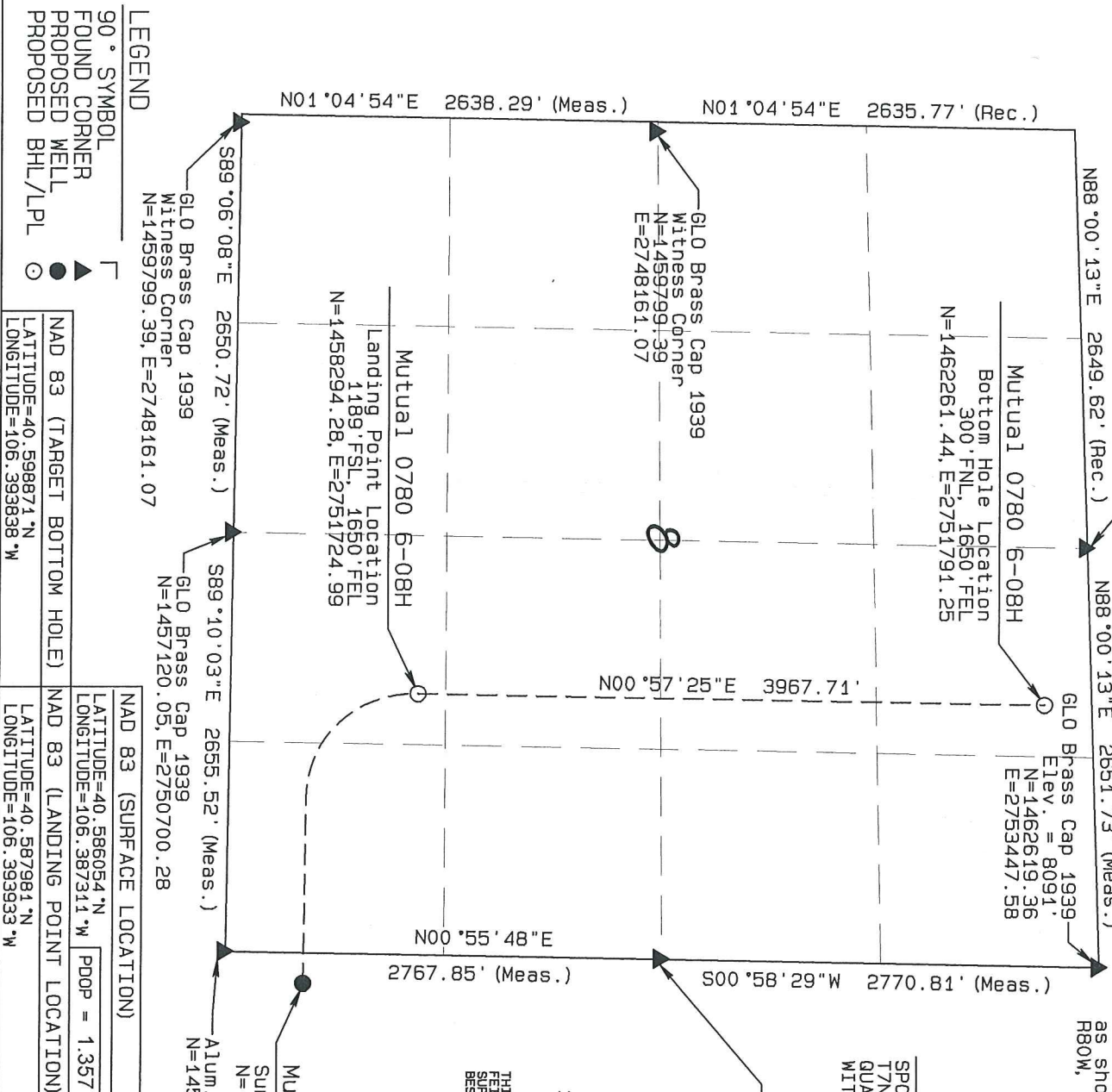
THIS IS TO CERTIFY THAT THE ABOVE PLAT WAS PREPARED FROM FIELD NOTES OF ACTUAL SURVEYS MADE BY ME OR UNDER MY SUPERVISION AND THAT THE SAME ARE TRUE AND CORRECT TO THE BEST OF MY KNOWLEDGE AND BELIEF.



Mutual 0780 6-08H
Surface Location 489.FSL, 194
N=1457573.87, E=2753557.05

NORTH PARK ENGINEERING & CONSULTING, INC.
P.O. BOX 395
MALDEN, CO 80480
(970) 723-3725

DATE OF FIELD WORK: FEB 19, 2016 DRAWING COMPLETION: MAR 16, 2016
SURVEYED BY: RPM DRAWN BY: TRH CHECKED BY: RPM



LEGEND
90° SYMBOL FOUND CORNER
PROPOSED WELL
PROPOSED BHL/LPL

NAD 83 (TARGET BOTTOM HOLE)
LATITUDE=40.598871°N
LONGITUDE=106.393838°W

NAD 83 (SURFACE LOCATION)
LATITUDE=40.586054°N
LONGITUDE=106.387311°W
PDOP = 1.357

NAD 83 (LANDING POINT LOCATION)
LATITUDE=40.587981°N
LONGITUDE=106.393933°W

T7N, R80W, 6th P.M.

SandRidge Exploration & Production, LLC

Well location, Mutual 0780 6-08H located as shown in the SW1/4SW1/4 of Section 9, T7N, R80W, 6th P.M., Jackson County, Colorado.

BASIS OF BEARINGS:

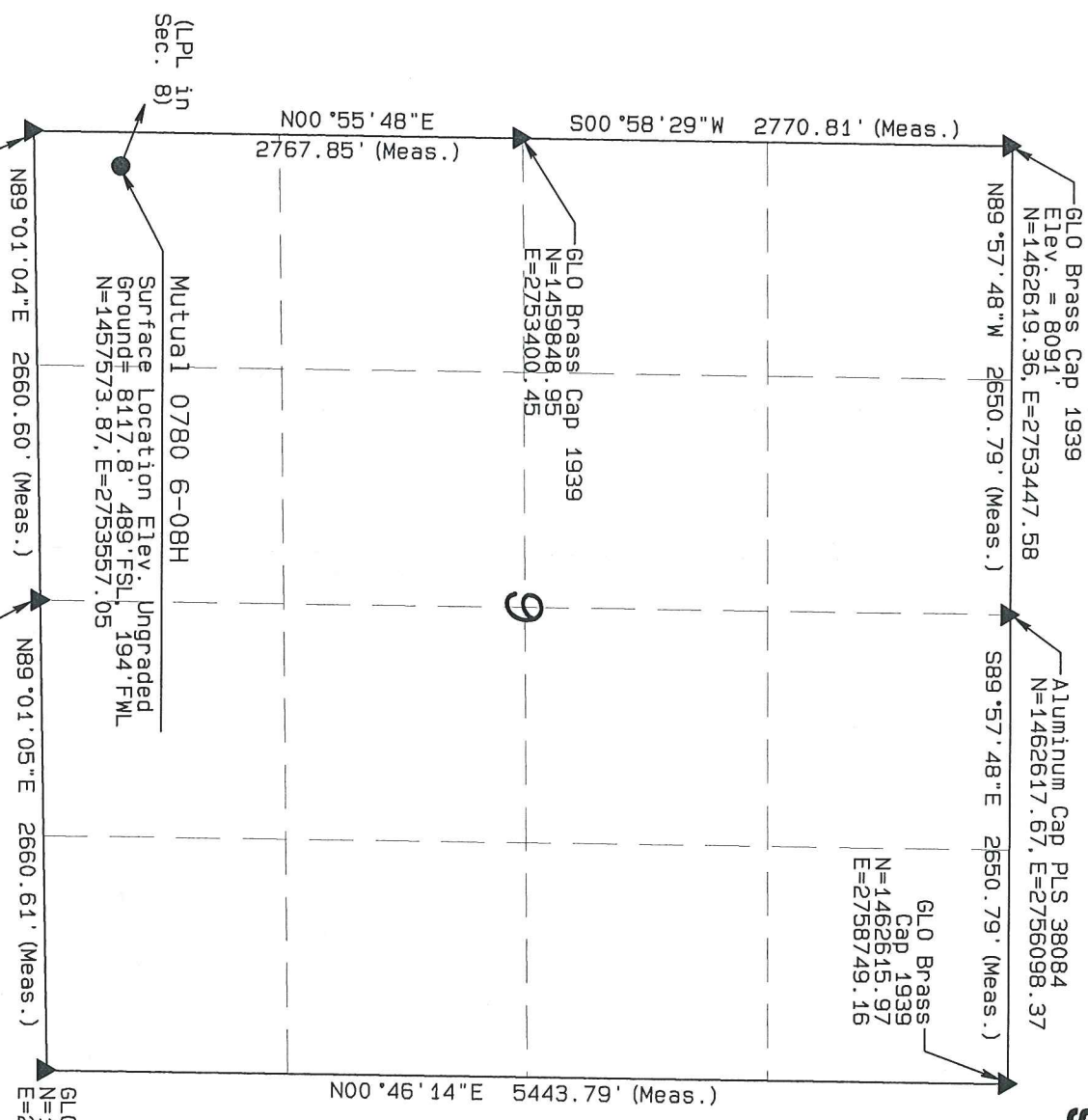
US STATE PLANE 1983
CO NORTH 0501 GRID

BASIS OF ELEVATION

SPOT ELEVATION AT THE NW CORNER OF SECTION 9, T7N, R80W, 6TH PM, TAKEN FROM THE COALMONT QUADRANGLE, USGS 7.5 MIN QUAD (TOPOGRAPHIC MAP) WITH SAID ELEVATION MARKED AS BEING 8091 FEET.



THIS IS TO CERTIFY THAT THE ABOVE PLAT WAS PREPARED FROM FIELD NOTES OF ACTUAL SURVEYS MADE BY ME OR UNDER MY SUPERVISION AND THAT THE SAME ARE TRUE AND CORRECT TO THE BEST OF MY KNOWLEDGE AND BELIEF.



LEGEND

- 90° SYMBOL
- FOUND CORNER
- PROPOSED WELL
- PROPOSED BHL/LPL

NAD 83 (TARGET BOTTOM HOLE)	LATITUDE=40.598871°N	LONGITUDE=106.393938°W
NAD 83 (SURFACE LOCATION)	LATITUDE=40.586054°N	LONGITUDE=106.387311°W
NAD 83 (LANDING POINT LOCATION)	LATITUDE=40.587981°N	LONGITUDE=106.393933°W

NORTH PARK ENGINEERING & CONSULTING, INC.
P.O. BOX 395
WALDEN, CO 80480
(970) 723-3725

DATE OF FIELD WORK: FEB 19, 2016
DRAWING COMPLETION: MAR 16, 2016
SURVEYED BY: RRM
DRAWN BY: TSH
CHECKED BY: RRM