

# T7N, R80W, 6th P.M.

## SandRidge Exploration & Production, LLC

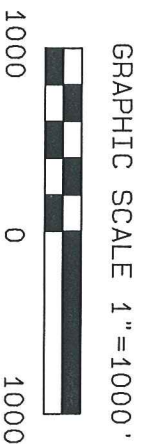
Bottom Hole Location, Mutual 0780 5-08H located as shown in the NW1/4NE1/4 of Section 8, T7N, R80W, 6th P.M., Jackson County, Colorado.

**BASIS OF BEARINGS:**  
 US STATE PLANE 1983  
 CO NDRTH 0501 GRID

### BASIS OF ELEVATION

SPOT ELEVATION AT THE NW CORNER OF SECTION 9, T7N, R80W, 6TH PM, TAKEN FROM THE COALMONT QUADRANGLE, USGS 7.5 MIN QUAD (TOPOGRAPHIC MAP) WITH SAID ELEVATION MARKED AS BEING 8091 FEET.

GL0 Brass Cap 1939  
 N=1459848.95  
 E=2753400.45



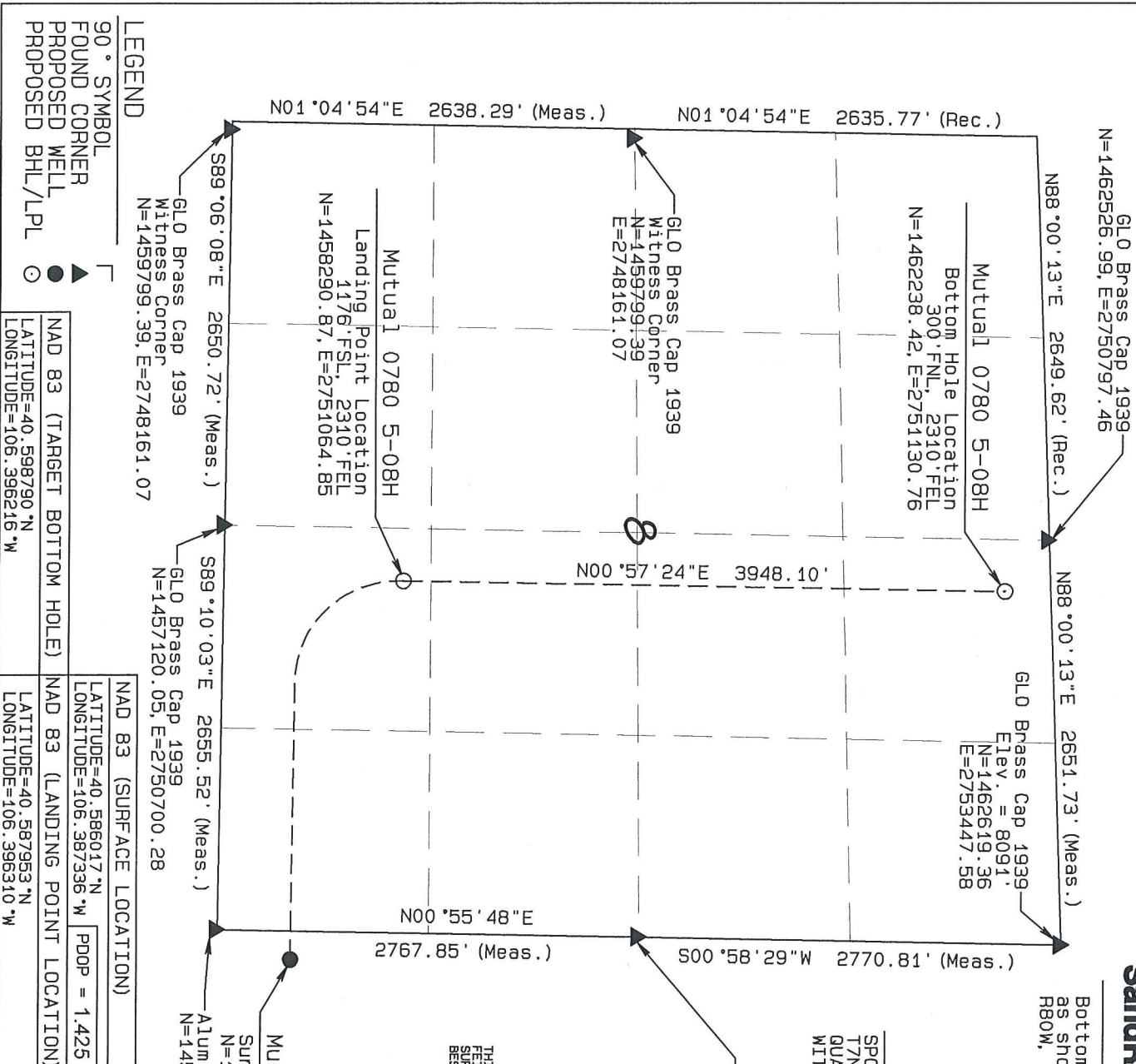
THIS IS TO CERTIFY THAT THE ABOVE PLAT WAS PREPARED FROM FIELD NOTES OF ACTUAL SURVEY MADE BY ME OR UNDER MY SUPERVISION AND THAT THE SAME ARE TRUE AND CORRECT TO THE BEST OF MY KNOWLEDGE AND BELIEF.



Surface Location 476.FSL, 187.FWL  
 N=1457560.47, E=2753550.05  
 Alum. Cap 2008 PLS 17492  
 N=1457081.47, East=2753355.52

**NORTH PARK ENGINEERING & CONSULTING, INC.**  
 P.O. BOX 395  
 WALDEN, CO 80480  
 (970) 723-9725

DATE OF FIELD WORK: FEB 19, 2016 DRAWING COMPLETION: MAR 16, 2016  
 SURVEYED BY: RPM DRAWN BY: TRH CHECKED BY: RPM



**LEGEND**  
 90° SYMBOL  
 FOUND CORNER  
 PROPOSED WELL  
 PROPOSED BHL/LPL

NAD 83 (TARGET BOTTOM HOLE)  
 LATITUDE=40.598790° N  
 LONGITUDE=106.396216° W

NAD 83 (SURFACE LOCATION)  
 LATITUDE=40.586017° N  
 LONGITUDE=106.387336° W  
 PDDP = 1.425

NAD 83 (LANDING POINT LOCATION)  
 LATITUDE=40.587963° N  
 LONGITUDE=106.396310° W

# T7N, R80W, 6th P.M.

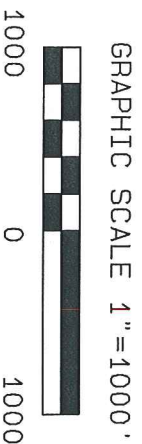
## SandRidge Exploration & Production, LLC

Well location, Mutual 0780 5-08H located as shown in the SW1/4SW1/4 of Section 9, T7N, R80W, 6th P.M., Jackson County, Colorado.

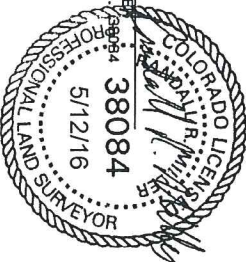
BASIS OF BEARINGS:  
 US STATE PLANE 1983  
 CO NORTH 0501 GRID

BASIS OF ELEVATION

SPOT ELEVATION AT THE NW CORNER OF SECTION 9, T7N, R80W, 6TH PM, TAKEN FROM THE COALMONT QUADRANGLE, USGS 7.5 MIN QUAD (TOPOGRAPHIC MAP) WITH SAID ELEVATION MARKED AS BEING 8091 FEET.



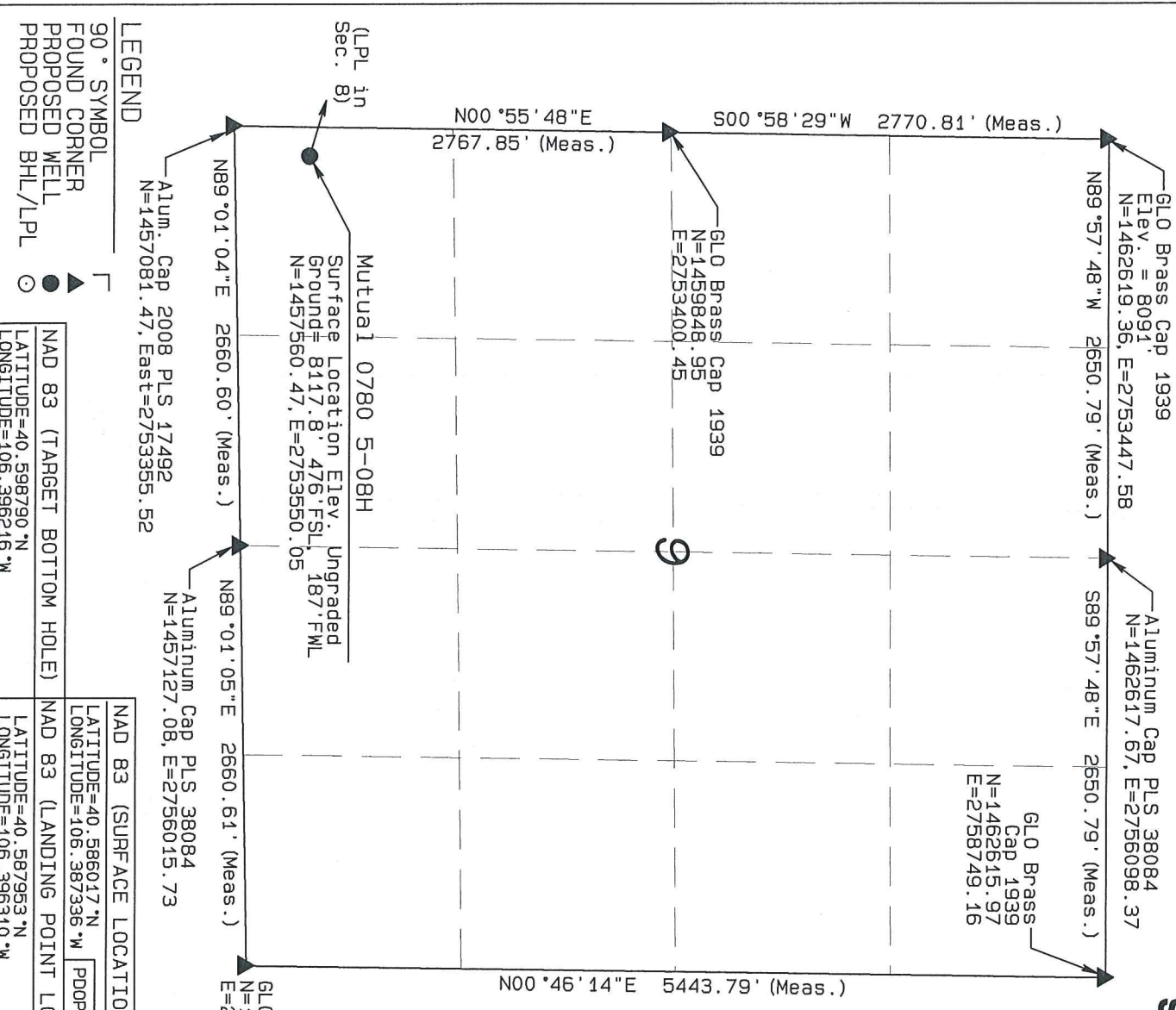
THIS IS TO CERTIFY THAT THE ABOVE PLAT WAS PREPARED FROM FIELD NOTES OF ACTUAL SURVEYS MADE BY ME OR UNDER MY SUPERVISION AND THAT THE SAME ARE TRUE AND CORRECT TO THE BEST OF MY KNOWLEDGE AND BELIEF.



RANDALL R. MILLER  
 COLORADO PLS NO. 38084

**NORTH PARK ENGINEERING & CONSULTING, INC.**  
 P.O. BOX 395  
 WALDEN, CO 80480  
 (970) 723-3725

DATE OF FIELD WORK: FEB 19, 2016 DRAWING COMPLETION: MAR 16, 2016  
 SURVEYED BY: RBM DRAWN BY: TCH CHECKED BY: RBM



**LEGEND**  
 90° SYMBOL  
 FOUND CORNER  
 PROPOSED WELL  
 PROPOSED BHL/LPL

NAD 83 (TARGET BOTTOM HOLE)	LATITUDE=40.598790° N	LONGITUDE=106.396216° W
NAD 83 (SURFACE LOCATION)	LATITUDE=40.586017° N	LONGITUDE=106.387336° W
PDOP = 1.425		
NAD 83 (LANDING POINT LOCATION)	LATITUDE=40.587983° N	LONGITUDE=106.396310° W

NAD 83 (SURFACE LOCATION)	LATITUDE=40.586017° N	LONGITUDE=106.387336° W
NAD 83 (LANDING POINT LOCATION)	LATITUDE=40.587983° N	LONGITUDE=106.396310° W