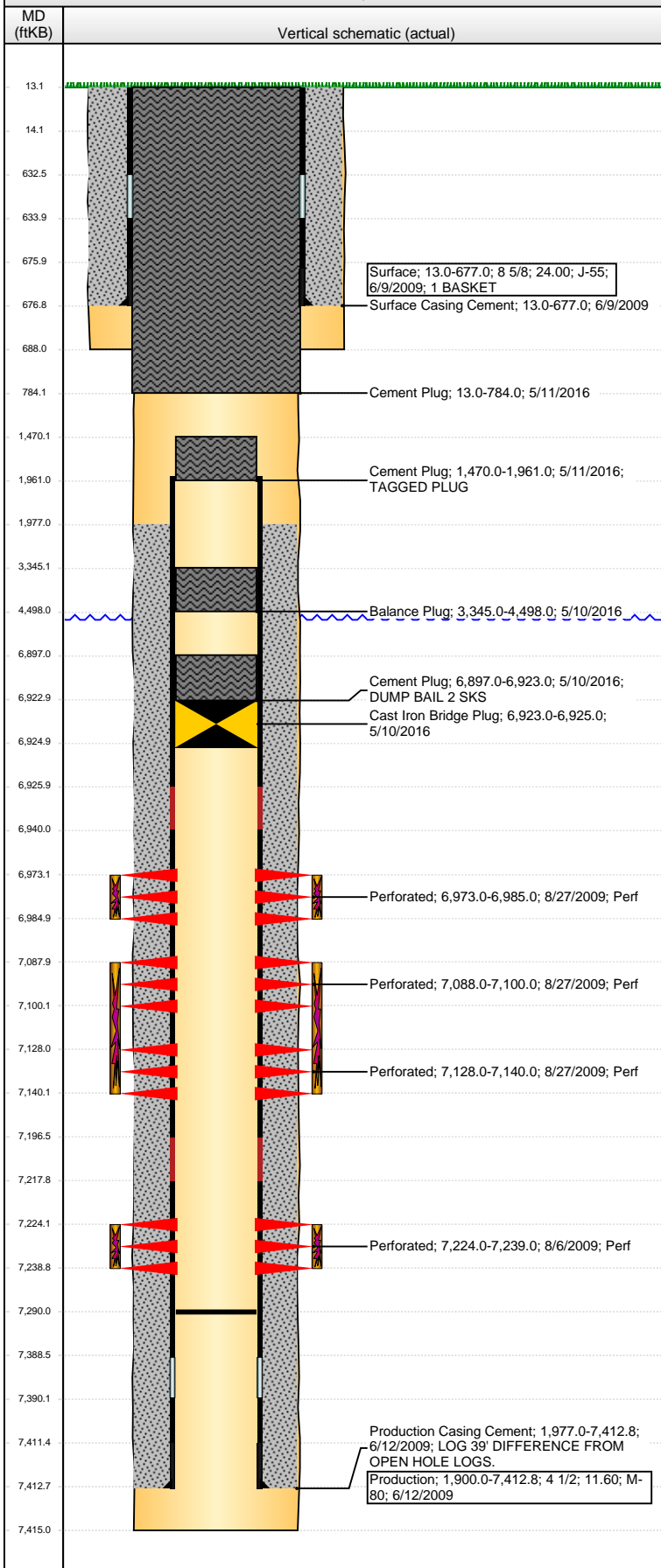


Well Name: HARSH H26-23D

DEVIATED - ORIGINAL HOLE, 6/7/2016 10:36:18 AM

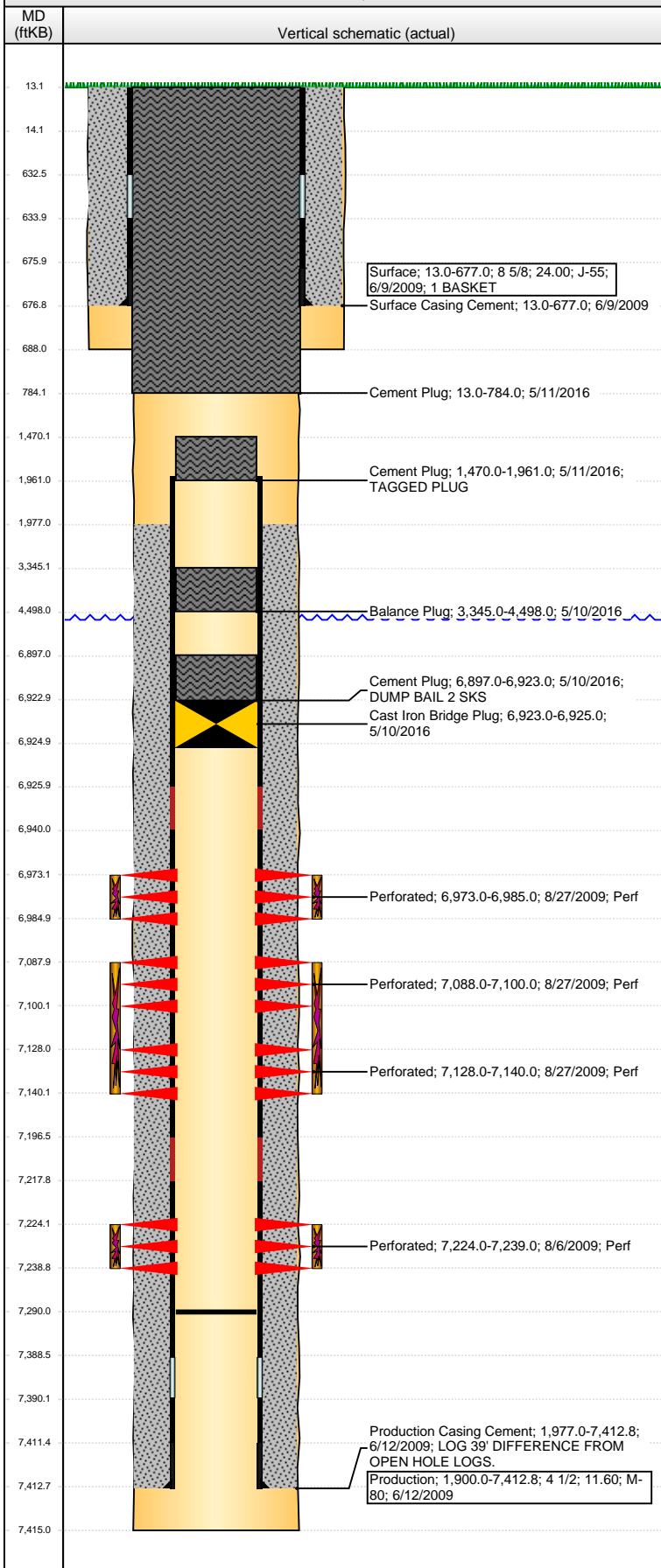


Well Header								
API 05-123-29678		Business Unit DJ BASIN		District 15		Well Config DEVIATED		
Original KB Elevation (ft) 4,870		KB - GL / MSL (ftKB) 13.00		Spud Date 6/9/2009		P & A Date 5/10/2016		
Comment								
Directions To Well CR 30 & CR 47, SOUTH .5 MILE, WEST .3 MILE, SOUTHWEST .1 MILE INTO								
Congressional Location								
Quarter 1	Quarter 2	Quarter 3	Quarter 4	Section	Township	Twnshp N...	Range	Rng E/W Dir
		NW	SE	26	3	N	65	W
Bottom Hole Location								
North-South Distance (ft) 1,355.0		From N or S Line S		East-West Distance (ft) 1,225.0		From E or W Line E		
Plug Back Total Depths								
Date	Depth (ftKB)	Method			Com			
6/12/2009	7,388.0	CASING TALLY						
1/19/2010	7,290.0	TUBING TALLY			REMAINDER OF BJ PYTHON PLUG. SUGGEST B...			
Wellbore Sections								
Section Des		Size (in)		Act Top, MD (ftKB)		Act Btm, MD (ftKB)		
SURFACE		12 1/4		13		688		
PRODUCTION		7 7/8		688		7,415		
Zone Statuses								
Zone Name	Status Date	Status	Fluid Type	Job	Prod Method			
NIOBRARA	8/29/2009	PR	Water	DRILLING/CO...	Flowing			
NIOBRARA	6/8/2010	PR						
NIOBRARA	5/10/2016	P&A		ABANDON WE...				
CODELL	8/29/2009	PR	Water	DRILLING/CO...	Flowing			
CODELL	6/8/2010	PR						
CODELL	5/10/2016	P&A		ABANDON WE...				
Casing Strings								
Surface, 677.0ftKB								
Casing Description		Run Date	OD (in)	Wt/Len (l...	Grade	Top, MD (ft...	MD (ftKB)	
Surface		6/9/2009	8 5/8	24.00	J-55	13.0	677.0	
Production, 7,412.8ftKB								
Casing Description		Run Date	OD (in)	Wt/Len (l...	Grade	Top, MD (ft...	MD (ftKB)	
Production		6/12/2009	4 1/2	11.60	M-80	13.0	7,412.8	
Cement								
Description				Top Depth (ftKB)		Bottom Depth (ftKB)		
Surface Casing Cement				13.0		677.0		
Description				Top Depth (ftKB)		Bottom Depth (ftKB)		
Production Casing Cement				1,977.0		7,412.8		
Description				Top Depth (ftKB)		Bottom Depth (ftKB)		
Cement Plug				6,897.0		6,923.0		
Description				Top Depth (ftKB)		Bottom Depth (ftKB)		
Balance Plug				3,345.0		4,498.0		
Description				Top Depth (ftKB)		Bottom Depth (ftKB)		
Cement Plug				1,470.0		1,961.0		
Description				Top Depth (ftKB)		Bottom Depth (ftKB)		
Cement Plug				13.0		784.0		
Tubing Strings								
Tubing Description		Run Date	String...	ID (in)	Wt (lb/ft)	Grade	Len (ft)	Set De...
Tubing - Production		1/20/2010	2 3/8	1.995	4.70	J-55	7,189.29	7,088.3
Perforation Data								
Zone	Bnch/St g	Entered Shot Total	Top (ftKB)		Btm (ftKB)		Date	
NIOBRARA, ORIGINAL HOLE	B	24	6,973.00		6,985.00		8/27/2009	
NIOBRARA, ORIGINAL HOLE	C	24	7,088.00		7,100.00		8/27/2009	
NIOBRARA, ORIGINAL HOLE	C MARL	24	7,128.00		7,140.00		8/27/2009	
CODELL, ORIGINAL HOLE		60	7,224.00		7,239.00		8/6/2009	

Well Name: HARSH H26-23D

DEVIATED - ORIGINAL HOLE, 6/7/2016 10:36:21 AM

Stimulations & Treatments



Date	Zone	Primary Job Type
8/27/2009	CODELL, ORIGINAL HOLE	DRILLING/COMPLETION - ORIGINAL

Technical Result	Tech Result Details	Tech Result Note
Success	According to Plan	

Comment
(CODELL): REVERSE STEP RATE RESULTS: PO - 14. NWB FRIC - 167 PSI. PERF FRIC - 174 PSI. ISIP - 3227 PSI. TREATMENT WENT WELL. NOLTE FLAT. POST ISIP - 3475 PSI. AVG VISC - 28.8 CP. AVG TEMP 68.9F. AVG PH - 10.16.

Date	Zone	Primary Job Type
8/27/2009	NIOBRARA, ORIGINAL HOLE	DRILLING/COMPLETION - ORIGINAL

Technical Result	Tech Result Details	Tech Result Note
Success	According to Plan	

Comment
(NIOBRARA C): ISIP - 3485 PSI. TREATMENT WENT WELL. NOLTE FLAT. POST ISIP - 3463 PSI. AVG VISC - 24.3 CP. AVG TEMP - 72.5F. AVG PH - 10.16.

Date	Zone	Primary Job Type
8/27/2009	NIOBRARA, ORIGINAL HOLE	DRILLING/COMPLETION - ORIGINAL

Technical Result	Tech Result Details	Tech Result Note
Success	According to Plan	

Comment
(NIOBRARA B): ISIP - 3515 PSI. TREATMENT WENT WELL. NOLTE FLAT. POST ISIP - 3575 PSI. AVG VISC - 23.7 CP. AVG TEMP - 72.6F. AVG PH - 10.18.

Other In Hole

Run Date	Des	OD (in)	Top (ftKB)	Btm (ftKB)
5/10/2016	Cast Iron Bridge Plug	3.99	6,923.0	6,925.0

Logs

Date	Type	Top, MD (ftKB)	Btm, MD (ftKB)
6/12/2009	SPECTRAL DENSITY/Pe/DSN NEUTRON/SP/ARRAY COMPENSATED TRUE RESISTIVITY/6 ARM CALIPER	688.0	7,418.0
6/12/2009	SPECTRAL GAMMA RAY	6,308.0	7,418.0
6/18/2009	CBL/CCL/GR	1,890.0	7,340.0
6/23/2009	CBL/CCL/GR	1,730.0	7,346.0
3/17/2016	GYRO	0.0	7,150.0