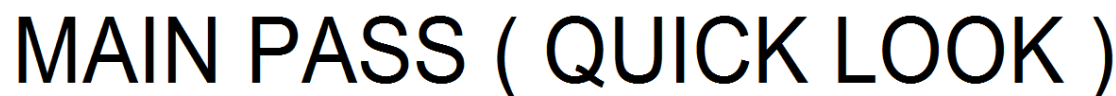


[illegible]

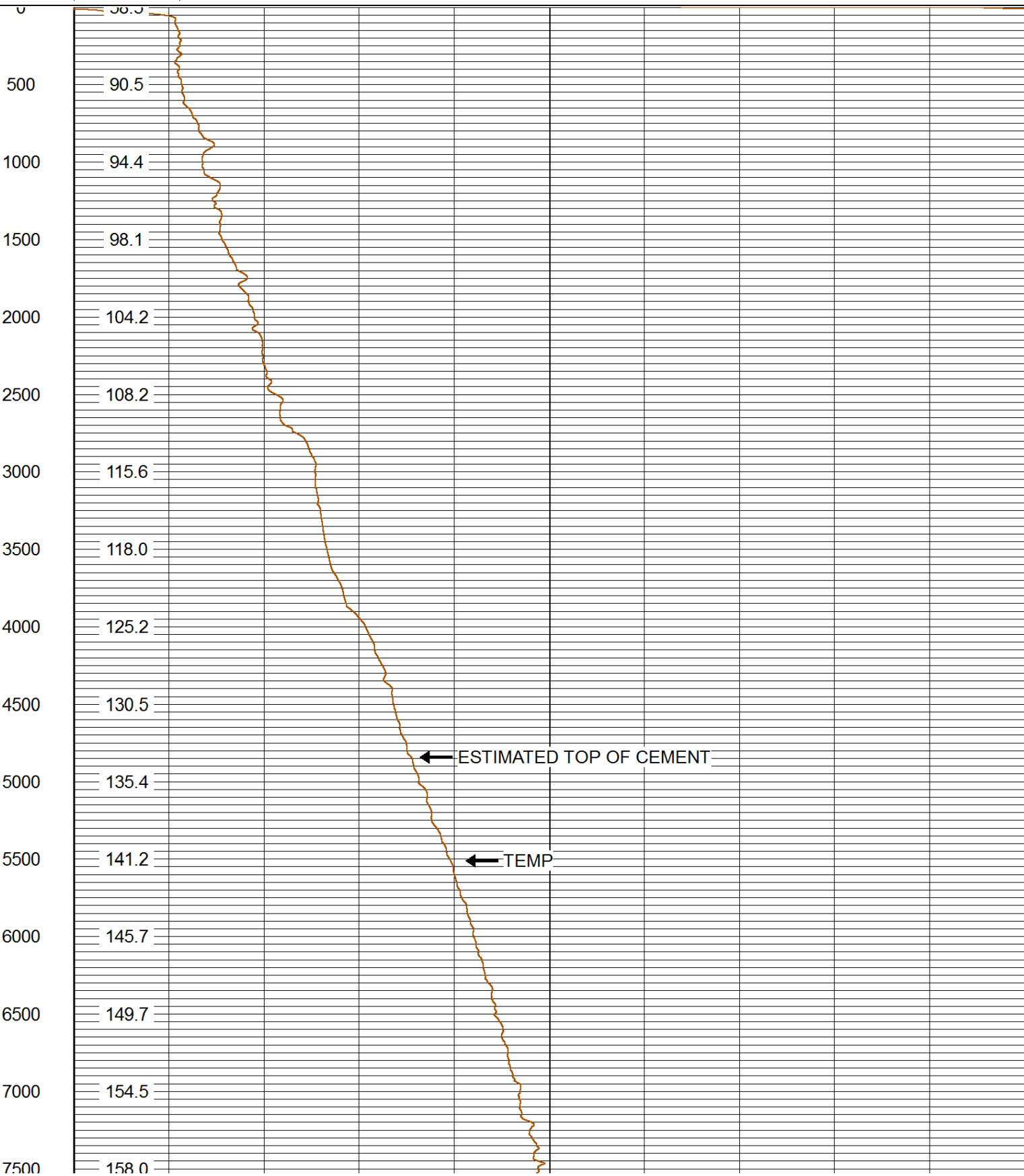
All interpretations are opinions based on inferences from electrical or other measurements and we cannot and do not guarantee the accuracy or correctness of any interpretation, and we shall not, except in the case of gross or willful negligence on our part, be liable or responsible for any loss, costs, damages, or expenses incurred or sustained by anyone resulting from any interpretation made by any of our officers, agents or employees. These interpretations are also subject to our general terms and conditions set out in our current Price Schedule.

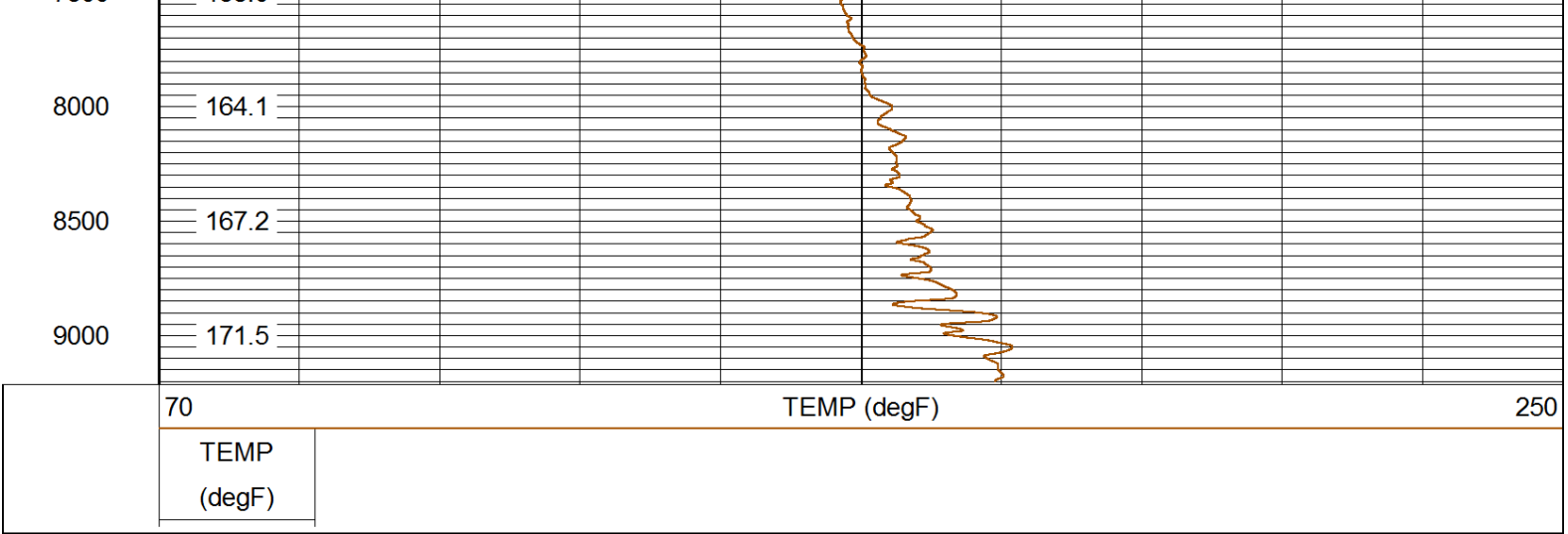
MAIN PASS 5" = 100'
CSG PSI = STATIC




Database File: 03262016_wpx_fed ru 313-6.db
Dataset Pathname: mainpass/pass1.1
Presentation Format: rmtemp_q
Dataset Creation: Sat Mar 26 16:13:35 2016 by Calc SCH 120430
Charted by: Depth in Feet scaled 1:10000

70	TEMP (degF)		250
TEMP			
(degF)			





	Company	WPX ENERGY LLC (TIGHT HOLE)
	Well	FEDERAL RU 313-6
	Field	RULISON
	County	GARFIELD
	State	COLORADO