

BILL BARRETT CORP

WELD COUNTY, COLORADO

Anschutz Equus Farms 6-62-20_21 NWNW Pad

Anschutz Equus Farms 4-62-20-1724C2

Wellbore #1

Plan: Design #1

Standard Planning Report

02 June, 2016



Bill Barrett Corporation

COMPANY DETAILS: BILL BARRETT CORP

Calculation Method: Minimum Curvature
Error System: ISCWSA
Scan Method: Closest Approach 3D
Error Surface: Elliptical Conic
Warning Method: Error Ratio

REFERENCE INFORMATION

Co-ordinate (N/E) Reference: Well Anschutz Equus Farms 4-62-20-1724C2, True North
Vertical (TVD) Reference: KB @ 4619.0ft (Original Well Elev)
Section (VS) Reference: Slot - (0.0N, 0.0E)
Measured Depth Reference: KB @ 4619.0ft (Original Well Elev)
Calculation Method: Minimum Curvature

WELL DETAILS: Anschutz Equus Farms 4-62-20-1724C2

+N/-S	+E/-W	Northing	Easting	Latitude	Longitude
0.0	0.0	1355037.20	3318972.31	40° 18' 8.391 N	104° 21' 22.810 W

WELLBORE TARGET DETAILS

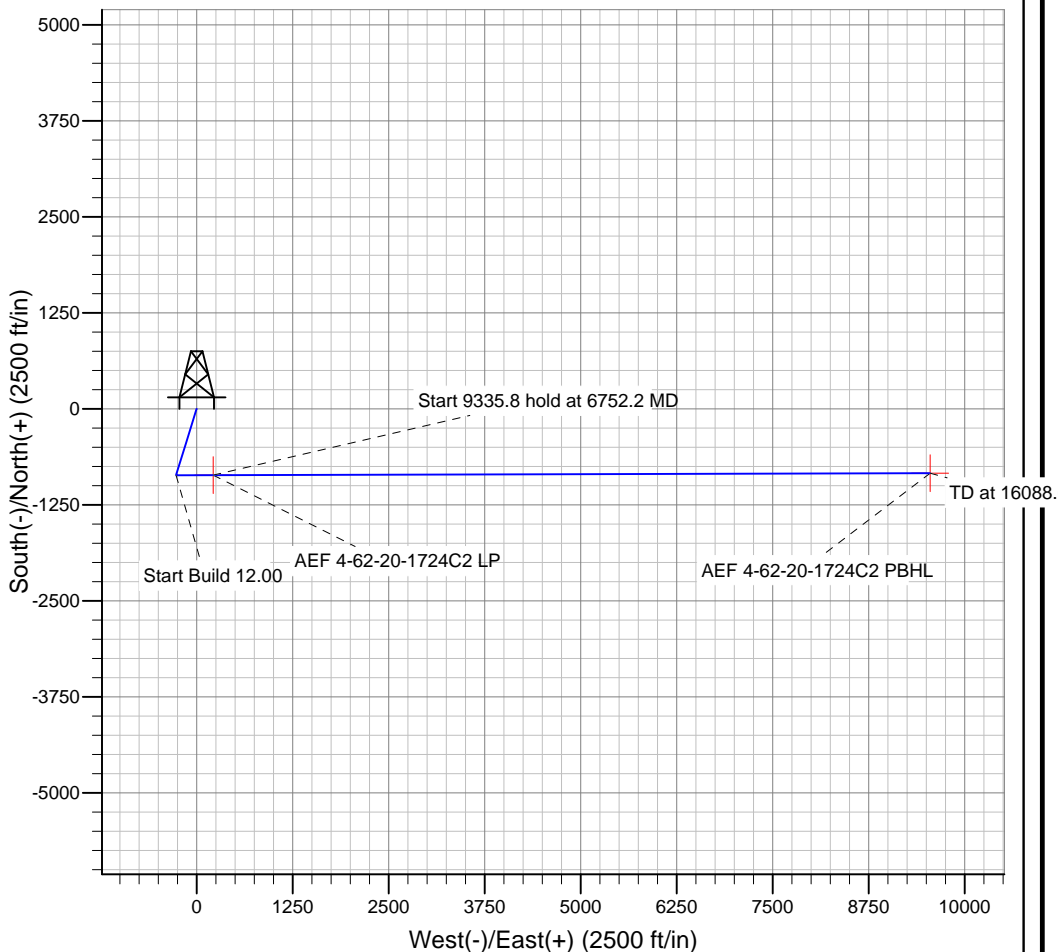
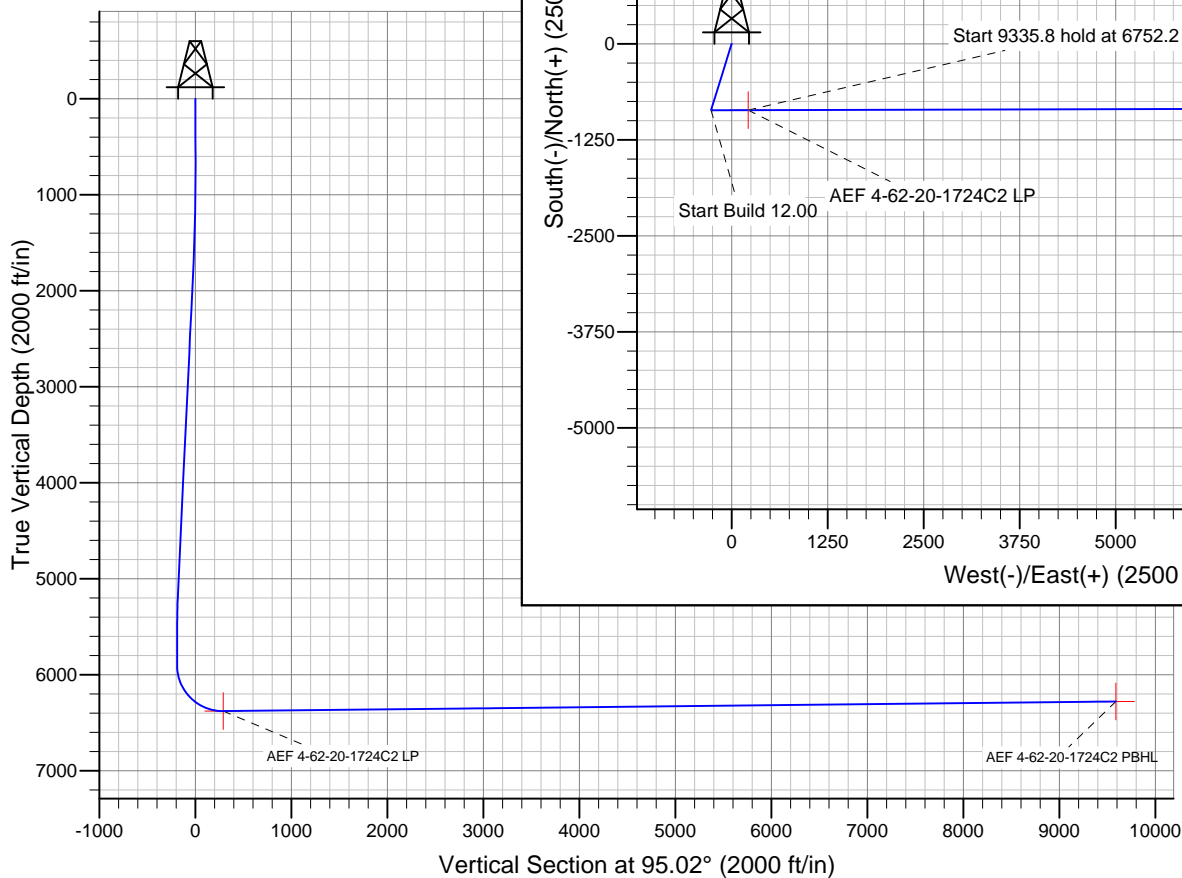
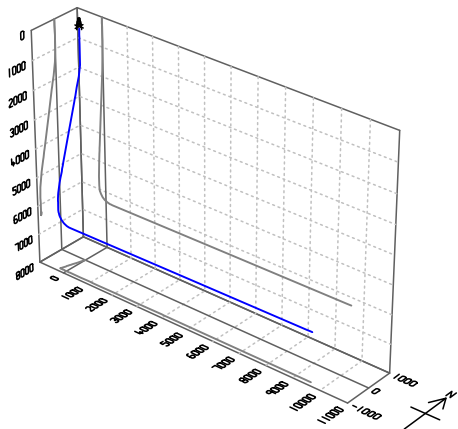
Name	TVD	+N/-S	+E/-W	Shape
AEF 4-62-20-1724C2 PBHL	6279.0	-838.2	9551.4	Point
AEF 4-62-20-1724C2 LP	6379.0	-863.4	216.2	Point

PROJECT DETAILS: WELD COUNTY, COLORADO

Geodetic System: US State Plane 1983
Datum: North American Datum 1983
Ellipsoid: GRS 1980
Zone: Colorado Northern Zone

SECTION DETAILS

Sec	MD	Inc	Azi	TVD	+N/-S	+E/-W	DLeg	TFace	VSec	Target
1	0.0	0.00	0.00	0.0	0.0	0.0	0.00	0.00	0.0	
2	1000.0	0.00	0.00	1000.0	0.0	0.0	0.00	0.00	0.0	
3	1635.2	12.70	197.12	1630.0	-67.0	-20.6	2.00	197.12	-14.7	
4	5111.9	12.70	197.12	5021.6	-797.6	-245.8	0.00	0.00	-175.1	
5	5747.0	0.00	89.85	5651.6	-864.7	-266.4	2.00	180.00	-189.8	
6	5997.0	0.00	89.85	5901.6	-864.7	-266.4	0.00	89.85	-189.8	
7	6752.2	90.61	89.85	6379.0	-863.4	216.2	12.00	89.85	290.8	AEF 4-62-20-1724C2 LP
8	16088.0	90.61	89.85	6279.0	-838.2	9551.4	0.00	0.00	9588.1	AEF 4-62-20-1724C2 PBHL



Azimuths to True North
Magnetic North: 8.16°

Magnetic Field
Strength: 52750.5snT
Dip Angle: 66.91°
Date: 12/31/2014
Model: IGRF2010

Bill Barrett Corp

Planning Report

Database:	Compass	Local Co-ordinate Reference:	Well Anschutz Equus Farms 4-62-20-1724C2
Company:	BILL BARRETT CORP	TVD Reference:	KB @ 4619.0ft (Original Well Elev)
Project:	WELD COUNTY, COLORADO	MD Reference:	KB @ 4619.0ft (Original Well Elev)
Site:	Anschutz Equus Farms 6-62-20_21 NWNW Pad	North Reference:	True
Well:	Anschutz Equus Farms 4-62-20-1724C2	Survey Calculation Method:	Minimum Curvature
Wellbore:	Wellbore #1		
Design:	Design #1		

Project	WELD COUNTY, COLORADO		
Map System:	US State Plane 1983	System Datum:	Mean Sea Level
Geo Datum:	North American Datum 1983		
Map Zone:	Colorado Northern Zone		

Site	Anschutz Equus Farms 6-62-20_21 NWNW Pad		
Site Position:		Northing:	1,355,097.67 ft
From:	Lat/Long	Easting:	3,318,971.53 ft
Position Uncertainty:	0.0 ft	Slot Radius:	"
		Latitude:	40° 18' 8.989 N
		Longitude:	104° 21' 22.810 W
		Grid Convergence:	0.74 °

Well	Anschutz Equus Farms 4-62-20-1724C2		
Well Position	+N/-S	-60.5 ft	Northing:
	+E/-W	0.0 ft	Easting:
Position Uncertainty		0.0 ft	Wellhead Elevation:
			Latitude:
			Longitude:
			Ground Level:

Wellbore	Wellbore #1				
Magnetics	Model Name	Sample Date	Declination (°)	Dip Angle (°)	Field Strength (nT)
	IGRF2010	12/31/2014	8.16	66.91	52,751

Design	Design #1			
Audit Notes:				
Version:	Phase:	PLAN	Tie On Depth:	0.0
Vertical Section:	Depth From (TVD) (ft)	+N/-S (ft)	+E/-W (ft)	Direction (°)
	0.0	0.0	0.0	95.02

Plan Sections										
Measured Depth (ft)	Inclination (°)	Azimuth (°)	Vertical Depth (ft)	+N/-S (ft)	+E/-W (ft)	Dogleg Rate (°/100ft)	Build Rate (°/100ft)	Turn Rate (°/100ft)	TFO (°)	Target
0.0	0.00	0.00	0.0	0.0	0.0	0.00	0.00	0.00	0.00	
1,000.0	0.00	0.00	1,000.0	0.0	0.0	0.00	0.00	0.00	0.00	
1,635.2	12.70	197.12	1,630.0	-67.0	-20.6	2.00	2.00	0.00	197.12	
5,111.9	12.70	197.12	5,021.6	-797.6	-245.8	0.00	0.00	0.00	0.00	
5,747.0	0.00	89.85	5,651.6	-864.7	-266.4	2.00	-2.00	0.00	180.00	
5,997.0	0.00	89.85	5,901.6	-864.7	-266.4	0.00	0.00	0.00	89.85	
6,752.2	90.61	89.85	6,379.0	-863.4	216.2	12.00	12.00	0.00	89.85	AEF 4-62-20-1724C
16,088.0	90.61	89.85	6,279.0	-838.2	9,551.4	0.00	0.00	0.00	0.00	AEF 4-62-20-1724C

Bill Barrett Corp

Planning Report

Database:	Compass	Local Co-ordinate Reference:	Well Anschutz Equus Farms 4-62-20-1724C2
Company:	BILL BARRETT CORP	TVD Reference:	KB @ 4619.0ft (Original Well Elev)
Project:	WELD COUNTY, COLORADO	MD Reference:	KB @ 4619.0ft (Original Well Elev)
Site:	Anschutz Equus Farms 6-62-20_21 NWNW Pad	North Reference:	True
Well:	Anschutz Equus Farms 4-62-20-1724C2	Survey Calculation Method:	Minimum Curvature
Wellbore:	Wellbore #1		
Design:	Design #1		

Planned Survey									
Measured Depth (ft)	Inclination (°)	Azimuth (°)	Vertical Depth (ft)	+N/-S (ft)	+E/-W (ft)	Vertical Section (ft)	Dogleg Rate (°/100ft)	Build Rate (°/100ft)	Turn Rate (°/100ft)
0.0	0.00	0.00	0.0	0.0	0.0	0.0	0.00	0.00	0.00
100.0	0.00	0.00	100.0	0.0	0.0	0.0	0.00	0.00	0.00
200.0	0.00	0.00	200.0	0.0	0.0	0.0	0.00	0.00	0.00
300.0	0.00	0.00	300.0	0.0	0.0	0.0	0.00	0.00	0.00
400.0	0.00	0.00	400.0	0.0	0.0	0.0	0.00	0.00	0.00
500.0	0.00	0.00	500.0	0.0	0.0	0.0	0.00	0.00	0.00
600.0	0.00	0.00	600.0	0.0	0.0	0.0	0.00	0.00	0.00
700.0	0.00	0.00	700.0	0.0	0.0	0.0	0.00	0.00	0.00
800.0	0.00	0.00	800.0	0.0	0.0	0.0	0.00	0.00	0.00
900.0	0.00	0.00	900.0	0.0	0.0	0.0	0.00	0.00	0.00
1,000.0	0.00	0.00	1,000.0	0.0	0.0	0.0	0.00	0.00	0.00
1,100.0	2.00	197.12	1,100.0	-1.7	-0.5	-0.4	2.00	2.00	0.00
1,200.0	4.00	197.12	1,199.8	-6.7	-2.1	-1.5	2.00	2.00	0.00
1,300.0	6.00	197.12	1,299.5	-15.0	-4.6	-3.3	2.00	2.00	0.00
1,400.0	8.00	197.12	1,398.7	-26.6	-8.2	-5.8	2.00	2.00	0.00
1,500.0	10.00	197.12	1,497.5	-41.6	-12.8	-9.1	2.00	2.00	0.00
1,600.0	12.00	197.12	1,595.6	-59.8	-18.4	-13.1	2.00	2.00	0.00
1,635.2	12.70	197.12	1,630.0	-67.0	-20.6	-14.7	2.00	2.00	0.00
1,700.0	12.70	197.12	1,693.2	-80.6	-24.8	-17.7	0.00	0.00	0.00
1,800.0	12.70	197.12	1,790.8	-101.7	-31.3	-22.3	0.00	0.00	0.00
1,900.0	12.70	197.12	1,888.3	-122.7	-37.8	-26.9	0.00	0.00	0.00
2,000.0	12.70	197.12	1,985.9	-143.7	-44.3	-31.5	0.00	0.00	0.00
2,100.0	12.70	197.12	2,083.4	-164.7	-50.7	-36.2	0.00	0.00	0.00
2,200.0	12.70	197.12	2,181.0	-185.7	-57.2	-40.8	0.00	0.00	0.00
2,300.0	12.70	197.12	2,278.5	-206.7	-63.7	-45.4	0.00	0.00	0.00
2,400.0	12.70	197.12	2,376.1	-227.7	-70.2	-50.0	0.00	0.00	0.00
2,500.0	12.70	197.12	2,473.6	-248.8	-76.6	-54.6	0.00	0.00	0.00
2,600.0	12.70	197.12	2,571.2	-269.8	-83.1	-59.2	0.00	0.00	0.00
2,700.0	12.70	197.12	2,668.7	-290.8	-89.6	-63.8	0.00	0.00	0.00
2,800.0	12.70	197.12	2,766.3	-311.8	-96.1	-68.4	0.00	0.00	0.00
2,900.0	12.70	197.12	2,863.8	-332.8	-102.5	-73.1	0.00	0.00	0.00
3,000.0	12.70	197.12	2,961.4	-353.8	-109.0	-77.7	0.00	0.00	0.00
3,100.0	12.70	197.12	3,059.0	-374.8	-115.5	-82.3	0.00	0.00	0.00
3,200.0	12.70	197.12	3,156.5	-395.9	-122.0	-86.9	0.00	0.00	0.00
3,300.0	12.70	197.12	3,254.1	-416.9	-128.4	-91.5	0.00	0.00	0.00
3,400.0	12.70	197.12	3,351.6	-437.9	-134.9	-96.1	0.00	0.00	0.00
3,500.0	12.70	197.12	3,449.2	-458.9	-141.4	-100.7	0.00	0.00	0.00
3,600.0	12.70	197.12	3,546.7	-479.9	-147.9	-105.3	0.00	0.00	0.00
3,700.0	12.70	197.12	3,644.3	-500.9	-154.3	-110.0	0.00	0.00	0.00
3,800.0	12.70	197.12	3,741.8	-522.0	-160.8	-114.6	0.00	0.00	0.00
3,900.0	12.70	197.12	3,839.4	-543.0	-167.3	-119.2	0.00	0.00	0.00
4,000.0	12.70	197.12	3,936.9	-564.0	-173.8	-123.8	0.00	0.00	0.00
4,100.0	12.70	197.12	4,034.5	-585.0	-180.2	-128.4	0.00	0.00	0.00
4,200.0	12.70	197.12	4,132.0	-606.0	-186.7	-133.0	0.00	0.00	0.00
4,300.0	12.70	197.12	4,229.6	-627.0	-193.2	-137.6	0.00	0.00	0.00
4,400.0	12.70	197.12	4,327.1	-648.0	-199.7	-142.3	0.00	0.00	0.00
4,500.0	12.70	197.12	4,424.7	-669.1	-206.1	-146.9	0.00	0.00	0.00
4,600.0	12.70	197.12	4,522.2	-690.1	-212.6	-151.5	0.00	0.00	0.00
4,700.0	12.70	197.12	4,619.8	-711.1	-219.1	-156.1	0.00	0.00	0.00
4,800.0	12.70	197.12	4,717.3	-732.1	-225.6	-160.7	0.00	0.00	0.00
4,900.0	12.70	197.12	4,814.9	-753.1	-232.0	-165.3	0.00	0.00	0.00
5,000.0	12.70	197.12	4,912.4	-774.1	-238.5	-169.9	0.00	0.00	0.00
5,100.0	12.70	197.12	5,010.0	-795.1	-245.0	-174.5	0.00	0.00	0.00

Bill Barrett Corp

Planning Report

Database:	Compass	Local Co-ordinate Reference:	Well Anschutz Equus Farms 4-62-20-1724C2
Company:	BILL BARRETT CORP	TVD Reference:	KB @ 4619.0ft (Original Well Elev)
Project:	WELD COUNTY, COLORADO	MD Reference:	KB @ 4619.0ft (Original Well Elev)
Site:	Anschutz Equus Farms 6-62-20_21 NWNW Pad	North Reference:	True
Well:	Anschutz Equus Farms 4-62-20-1724C2	Survey Calculation Method:	Minimum Curvature
Wellbore:	Wellbore #1		
Design:	Design #1		

Planned Survey

Measured Depth (ft)	Inclination (°)	Azimuth (°)	Vertical Depth (ft)	+N/-S (ft)	+E/-W (ft)	Vertical Section (ft)	Dogleg Rate (°/100ft)	Build Rate (°/100ft)	Turn Rate (°/100ft)
5,111.9	12.70	197.12	5,021.6	-797.6	-245.8	-175.1	0.00	0.00	0.00
5,200.0	10.94	197.12	5,107.8	-814.9	-251.1	-178.9	2.00	-2.00	0.00
5,300.0	8.94	197.12	5,206.3	-831.4	-256.2	-182.5	2.00	-2.00	0.00
5,400.0	6.94	197.12	5,305.4	-844.6	-260.2	-185.4	2.00	-2.00	0.00
5,500.0	4.94	197.12	5,404.8	-854.5	-263.3	-187.6	2.00	-2.00	0.00
5,600.0	2.94	197.12	5,504.6	-861.1	-265.3	-189.0	2.00	-2.00	0.00
5,700.0	0.94	197.12	5,604.5	-864.3	-266.3	-189.7	2.00	-2.00	0.00
5,747.0	0.00	89.85	5,651.6	-864.7	-266.4	-189.8	2.00	-2.00	0.00
5,800.0	0.00	89.85	5,704.5	-864.7	-266.4	-189.8	0.00	0.00	0.00
5,900.0	0.00	89.85	5,804.5	-864.7	-266.4	-189.8	0.00	0.00	0.00
5,997.0	0.00	89.85	5,901.6	-864.7	-266.4	-189.8	0.00	0.00	0.00
6,000.0	0.35	89.85	5,904.5	-864.7	-266.4	-189.8	12.00	12.00	0.00
6,100.0	12.35	89.85	6,003.7	-864.6	-255.4	-178.8	12.00	12.00	0.00
6,200.0	24.35	89.85	6,098.5	-864.5	-223.9	-147.5	12.00	12.00	0.00
6,300.0	36.35	89.85	6,184.6	-864.4	-173.5	-97.3	12.00	12.00	0.00
6,400.0	48.35	89.85	6,258.4	-864.2	-106.2	-30.3	12.00	12.00	0.00
6,500.0	60.35	89.85	6,316.5	-864.0	-25.1	50.5	12.00	12.00	0.00
6,600.0	72.35	89.85	6,356.6	-863.8	66.3	141.6	12.00	12.00	0.00
6,700.0	84.35	89.85	6,376.7	-863.5	164.1	238.9	12.00	12.00	0.00
6,752.2	90.61	89.85	6,379.0	-863.4	216.2	290.8	12.00	12.00	0.00
AEF 4-62-20-1724C2 LP									
6,800.0	90.61	89.85	6,378.5	-863.2	264.0	338.5	0.00	0.00	0.00
6,900.0	90.61	89.85	6,377.4	-863.0	364.0	438.0	0.00	0.00	0.00
7,000.0	90.61	89.85	6,376.3	-862.7	464.0	537.6	0.00	0.00	0.00
7,100.0	90.61	89.85	6,375.3	-862.4	564.0	637.2	0.00	0.00	0.00
7,200.0	90.61	89.85	6,374.2	-862.2	664.0	736.8	0.00	0.00	0.00
7,300.0	90.61	89.85	6,373.1	-861.9	764.0	836.4	0.00	0.00	0.00
7,400.0	90.61	89.85	6,372.1	-861.6	864.0	936.0	0.00	0.00	0.00
7,500.0	90.61	89.85	6,371.0	-861.3	964.0	1,035.6	0.00	0.00	0.00
7,600.0	90.61	89.85	6,369.9	-861.1	1,064.0	1,135.2	0.00	0.00	0.00
7,700.0	90.61	89.85	6,368.8	-860.8	1,163.9	1,234.7	0.00	0.00	0.00
7,800.0	90.61	89.85	6,367.8	-860.5	1,263.9	1,334.3	0.00	0.00	0.00
7,900.0	90.61	89.85	6,366.7	-860.3	1,363.9	1,433.9	0.00	0.00	0.00
8,000.0	90.61	89.85	6,365.6	-860.0	1,463.9	1,533.5	0.00	0.00	0.00
8,100.0	90.61	89.85	6,364.6	-859.7	1,563.9	1,633.1	0.00	0.00	0.00
8,200.0	90.61	89.85	6,363.5	-859.5	1,663.9	1,732.7	0.00	0.00	0.00
8,300.0	90.61	89.85	6,362.4	-859.2	1,763.9	1,832.3	0.00	0.00	0.00
8,400.0	90.61	89.85	6,361.3	-858.9	1,863.9	1,931.9	0.00	0.00	0.00
8,500.0	90.61	89.85	6,360.3	-858.6	1,963.9	2,031.4	0.00	0.00	0.00
8,600.0	90.61	89.85	6,359.2	-858.4	2,063.9	2,131.0	0.00	0.00	0.00
8,700.0	90.61	89.85	6,358.1	-858.1	2,163.9	2,230.6	0.00	0.00	0.00
8,800.0	90.61	89.85	6,357.1	-857.8	2,263.9	2,330.2	0.00	0.00	0.00
8,900.0	90.61	89.85	6,356.0	-857.6	2,363.9	2,429.8	0.00	0.00	0.00
9,000.0	90.61	89.85	6,354.9	-857.3	2,463.9	2,529.4	0.00	0.00	0.00
9,100.0	90.61	89.85	6,353.9	-857.0	2,563.9	2,629.0	0.00	0.00	0.00
9,200.0	90.61	89.85	6,352.8	-856.8	2,663.9	2,728.6	0.00	0.00	0.00
9,300.0	90.61	89.85	6,351.7	-856.5	2,763.8	2,828.1	0.00	0.00	0.00
9,400.0	90.61	89.85	6,350.6	-856.2	2,863.8	2,927.7	0.00	0.00	0.00
9,500.0	90.61	89.85	6,349.6	-856.0	2,963.8	3,027.3	0.00	0.00	0.00
9,600.0	90.61	89.85	6,348.5	-855.7	3,063.8	3,126.9	0.00	0.00	0.00
9,700.0	90.61	89.85	6,347.4	-855.4	3,163.8	3,226.5	0.00	0.00	0.00
9,800.0	90.61	89.85	6,346.4	-855.1	3,263.8	3,326.1	0.00	0.00	0.00
9,900.0	90.61	89.85	6,345.3	-854.9	3,363.8	3,425.7	0.00	0.00	0.00

Bill Barrett Corp

Planning Report

Database:	Compass	Local Co-ordinate Reference:	Well Anschutz Equus Farms 4-62-20-1724C2
Company:	BILL BARRETT CORP	TVD Reference:	KB @ 4619.0ft (Original Well Elev)
Project:	WELD COUNTY, COLORADO	MD Reference:	KB @ 4619.0ft (Original Well Elev)
Site:	Anschutz Equus Farms 6-62-20_21 NWNW Pad	North Reference:	True
Well:	Anschutz Equus Farms 4-62-20-1724C2	Survey Calculation Method:	Minimum Curvature
Wellbore:	Wellbore #1		
Design:	Design #1		

Planned Survey									
Measured Depth (ft)	Inclination (°)	Azimuth (°)	Vertical Depth (ft)	+N/-S (ft)	+E/-W (ft)	Vertical Section (ft)	Dogleg Rate (°/100ft)	Build Rate (°/100ft)	Turn Rate (°/100ft)
10,000.0	90.61	89.85	6,344.2	-854.6	3,463.8	3,525.3	0.00	0.00	0.00
10,100.0	90.61	89.85	6,343.1	-854.3	3,563.8	3,624.8	0.00	0.00	0.00
10,200.0	90.61	89.85	6,342.1	-854.1	3,663.8	3,724.4	0.00	0.00	0.00
10,300.0	90.61	89.85	6,341.0	-853.8	3,763.8	3,824.0	0.00	0.00	0.00
10,400.0	90.61	89.85	6,339.9	-853.5	3,863.8	3,923.6	0.00	0.00	0.00
10,500.0	90.61	89.85	6,338.9	-853.3	3,963.8	4,023.2	0.00	0.00	0.00
10,600.0	90.61	89.85	6,337.8	-853.0	4,063.8	4,122.8	0.00	0.00	0.00
10,700.0	90.61	89.85	6,336.7	-852.7	4,163.8	4,222.4	0.00	0.00	0.00
10,800.0	90.61	89.85	6,335.6	-852.5	4,263.8	4,322.0	0.00	0.00	0.00
10,900.0	90.61	89.85	6,334.6	-852.2	4,363.8	4,421.5	0.00	0.00	0.00
11,000.0	90.61	89.85	6,333.5	-851.9	4,463.7	4,521.1	0.00	0.00	0.00
11,100.0	90.61	89.85	6,332.4	-851.6	4,563.7	4,620.7	0.00	0.00	0.00
11,200.0	90.61	89.85	6,331.4	-851.4	4,663.7	4,720.3	0.00	0.00	0.00
11,300.0	90.61	89.85	6,330.3	-851.1	4,763.7	4,819.9	0.00	0.00	0.00
11,400.0	90.61	89.85	6,329.2	-850.8	4,863.7	4,919.5	0.00	0.00	0.00
11,500.0	90.61	89.85	6,328.1	-850.6	4,963.7	5,019.1	0.00	0.00	0.00
11,600.0	90.61	89.85	6,327.1	-850.3	5,063.7	5,118.7	0.00	0.00	0.00
11,700.0	90.61	89.85	6,326.0	-850.0	5,163.7	5,218.2	0.00	0.00	0.00
11,800.0	90.61	89.85	6,324.9	-849.8	5,263.7	5,317.8	0.00	0.00	0.00
11,900.0	90.61	89.85	6,323.9	-849.5	5,363.7	5,417.4	0.00	0.00	0.00
12,000.0	90.61	89.85	6,322.8	-849.2	5,463.7	5,517.0	0.00	0.00	0.00
12,100.0	90.61	89.85	6,321.7	-848.9	5,563.7	5,616.6	0.00	0.00	0.00
12,200.0	90.61	89.85	6,320.6	-848.7	5,663.7	5,716.2	0.00	0.00	0.00
12,300.0	90.61	89.85	6,319.6	-848.4	5,763.7	5,815.8	0.00	0.00	0.00
12,400.0	90.61	89.85	6,318.5	-848.1	5,863.7	5,915.4	0.00	0.00	0.00
12,500.0	90.61	89.85	6,317.4	-847.9	5,963.7	6,014.9	0.00	0.00	0.00
12,600.0	90.61	89.85	6,316.4	-847.6	6,063.6	6,114.5	0.00	0.00	0.00
12,700.0	90.61	89.85	6,315.3	-847.3	6,163.6	6,214.1	0.00	0.00	0.00
12,800.0	90.61	89.85	6,314.2	-847.1	6,263.6	6,313.7	0.00	0.00	0.00
12,900.0	90.61	89.85	6,313.1	-846.8	6,363.6	6,413.3	0.00	0.00	0.00
13,000.0	90.61	89.85	6,312.1	-846.5	6,463.6	6,512.9	0.00	0.00	0.00
13,100.0	90.61	89.85	6,311.0	-846.3	6,563.6	6,612.5	0.00	0.00	0.00
13,200.0	90.61	89.85	6,309.9	-846.0	6,663.6	6,712.1	0.00	0.00	0.00
13,300.0	90.61	89.85	6,308.9	-845.7	6,763.6	6,811.6	0.00	0.00	0.00
13,400.0	90.61	89.85	6,307.8	-845.4	6,863.6	6,911.2	0.00	0.00	0.00
13,500.0	90.61	89.85	6,306.7	-845.2	6,963.6	7,010.8	0.00	0.00	0.00
13,600.0	90.61	89.85	6,305.6	-844.9	7,063.6	7,110.4	0.00	0.00	0.00
13,700.0	90.61	89.85	6,304.6	-844.6	7,163.6	7,210.0	0.00	0.00	0.00
13,800.0	90.61	89.85	6,303.5	-844.4	7,263.6	7,309.6	0.00	0.00	0.00
13,900.0	90.61	89.85	6,302.4	-844.1	7,363.6	7,409.2	0.00	0.00	0.00
14,000.0	90.61	89.85	6,301.4	-843.8	7,463.6	7,508.8	0.00	0.00	0.00
14,100.0	90.61	89.85	6,300.3	-843.6	7,563.6	7,608.3	0.00	0.00	0.00
14,200.0	90.61	89.85	6,299.2	-843.3	7,663.6	7,707.9	0.00	0.00	0.00
14,300.0	90.61	89.85	6,298.2	-843.0	7,763.5	7,807.5	0.00	0.00	0.00
14,400.0	90.61	89.85	6,297.1	-842.7	7,863.5	7,907.1	0.00	0.00	0.00
14,500.0	90.61	89.85	6,296.0	-842.5	7,963.5	8,006.7	0.00	0.00	0.00
14,600.0	90.61	89.85	6,294.9	-842.2	8,063.5	8,106.3	0.00	0.00	0.00
14,700.0	90.61	89.85	6,293.9	-841.9	8,163.5	8,205.9	0.00	0.00	0.00
14,800.0	90.61	89.85	6,292.8	-841.7	8,263.5	8,305.5	0.00	0.00	0.00
14,900.0	90.61	89.85	6,291.7	-841.4	8,363.5	8,405.0	0.00	0.00	0.00
15,000.0	90.61	89.85	6,290.7	-841.1	8,463.5	8,504.6	0.00	0.00	0.00
15,100.0	90.61	89.85	6,289.6	-840.9	8,563.5	8,604.2	0.00	0.00	0.00
15,200.0	90.61	89.85	6,288.5	-840.6	8,663.5	8,703.8	0.00	0.00	0.00

Bill Barrett Corp

Planning Report

Database:	Compass	Local Co-ordinate Reference:	Well Anschutz Equus Farms 4-62-20-1724C2
Company:	BILL BARRETT CORP	TVD Reference:	KB @ 4619.0ft (Original Well Elev)
Project:	WELD COUNTY, COLORADO	MD Reference:	KB @ 4619.0ft (Original Well Elev)
Site:	Anschutz Equus Farms 6-62-20_21 NWNW Pad	North Reference:	True
Well:	Anschutz Equus Farms 4-62-20-1724C2	Survey Calculation Method:	Minimum Curvature
Wellbore:	Wellbore #1		
Design:	Design #1		

Planned Survey									
Measured Depth (ft)	Inclination (°)	Azimuth (°)	Vertical Depth (ft)	+N/-S (ft)	+E/-W (ft)	Vertical Section (ft)	Dogleg Rate (°/100ft)	Build Rate (°/100ft)	Turn Rate (°/100ft)
15,300.0	90.61	89.85	6,287.4	-840.3	8,763.5	8,803.4	0.00	0.00	0.00
15,400.0	90.61	89.85	6,286.4	-840.1	8,863.5	8,903.0	0.00	0.00	0.00
15,500.0	90.61	89.85	6,285.3	-839.8	8,963.5	9,002.6	0.00	0.00	0.00
15,600.0	90.61	89.85	6,284.2	-839.5	9,063.5	9,102.2	0.00	0.00	0.00
15,700.0	90.61	89.85	6,283.2	-839.2	9,163.5	9,201.7	0.00	0.00	0.00
15,800.0	90.61	89.85	6,282.1	-839.0	9,263.5	9,301.3	0.00	0.00	0.00
15,900.0	90.61	89.85	6,281.0	-838.7	9,363.4	9,400.9	0.00	0.00	0.00
16,000.0	90.61	89.85	6,279.9	-838.4	9,463.4	9,500.5	0.00	0.00	0.00
16,088.0	90.61	89.85	6,279.0	-838.2	9,551.4	9,588.1	0.00	0.00	0.00
AEF 4-62-20-1724C2 PBHL									