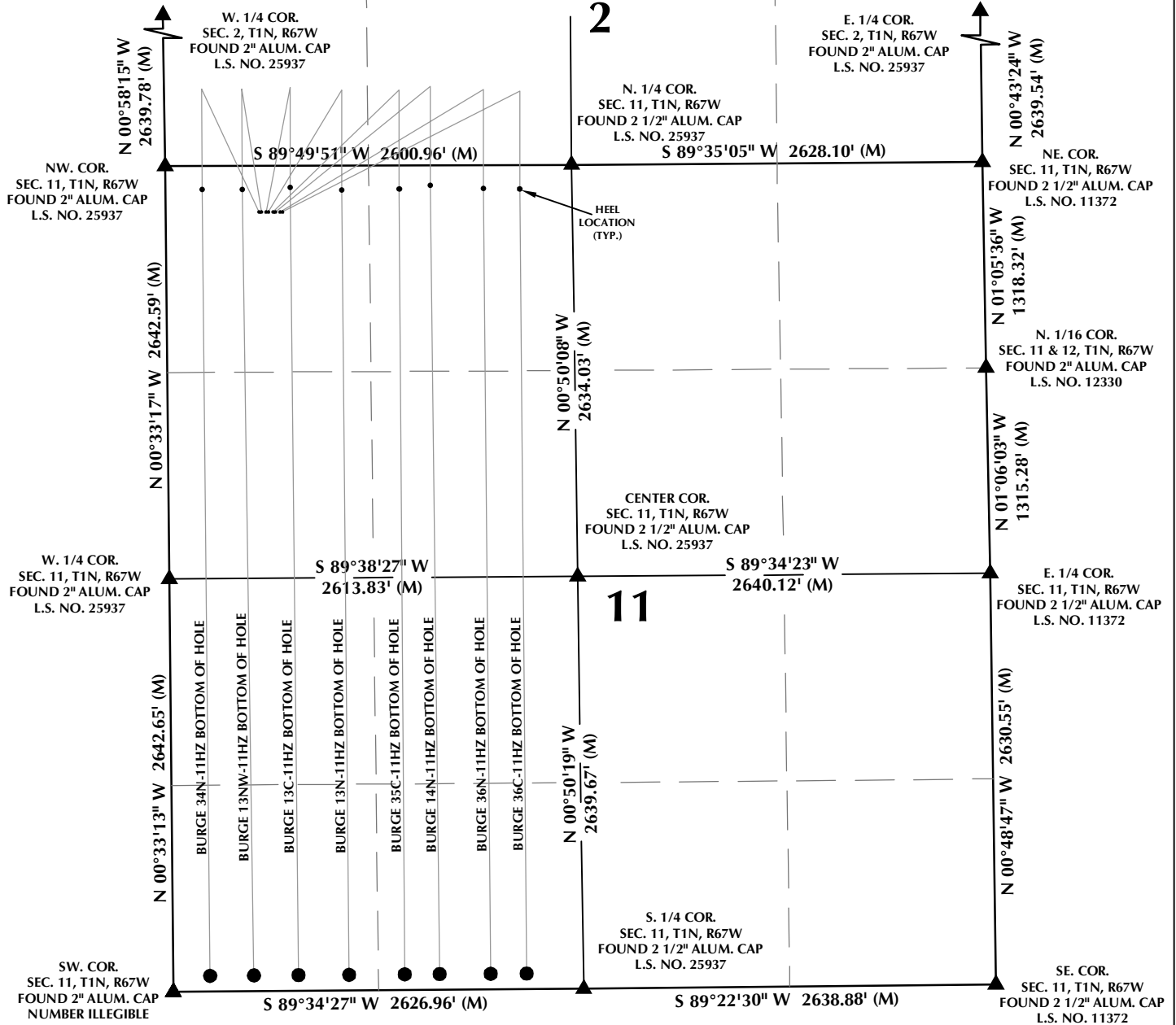


MULTI-WELL PLAN SECTION 11, T1N, R67W



WELL NOTES:

BURGE 34N-11HZ

SURFACE: 294' FNL, 597' FWL
BOTTOM HOLE: 100' FSL, 236' FWL

BURGE 13NW-11HZ

SURFACE: 294' FNL, 612' FWL
BOTTOM HOLE: 100' FSL, 517' FWL

BURGE 13C-11HZ

SURFACE: 295' FNL, 642' FWL
BOTTOM HOLE: 100' FSL, 802' FWL

BURGE 13N-11HZ

SURFACE: 295' FNL, 657' FWL
BOTTOM HOLE: 100' FSL, 1126' FWL

BURGE 35C-11HZ

SURFACE: 295' FNL, 687' FWL
BOTTOM HOLE: 100' FSL, 1482' FWL

BURGE 14N-11HZ

SURFACE: 295' FNL, 702' FWL
BOTTOM HOLE: 100' FSL, 1706' FWL

BURGE 36N-11HZ

SURFACE: 295' FNL, 731' FWL
BOTTOM HOLE: 100' FSL, 2032' FWL

BURGE 36C-11HZ

SURFACE: 295' FNL, 746' FWL
BOTTOM HOLE: 100' FSL, 2263' FWL

NOTES:

- INDICATES SECTION CORNER
- INDICATES CALCULATED CORNER
- BASIS OF BEARING DERIVED FROM COLORADO COORDINATE SYSTEM OF 1983 NORTH ZONE.
- ALL MEASURED DISTANCES ARE GRID.
COMBINED SCALE FACTOR: .99972422 CALCULATED FROM THE NW CORNER OF SECTION 11
- WELL FOOTAGES ARE MEASURED AT RIGHT ANGLES TO THE SECTION LINES.



SCALE: 1" = 1000'

WELL PAD - BURGE 13N-11HZ

MULTI-WELL PLAN
BURGE 34N-11HZ, BURGE 13NW-11HZ,
BURGE 13C-11HZ, BURGE 13N-11HZ,
BURGE 35C-11HZ, BURGE 14N-11HZ,
BURGE 36N-11HZ & BURGE 36C-11HZ
LOCATED IN SECTION 11
T1N, R67W, 6TH P.M.
WELD COUNTY, COLORADO

**Kerr-McGee Oil &
Gas Onshore L.P.**
1099 18th Street
Denver, Colorado 80202



CONSULTING, LLC

SHERIDAN OFFICE
1095 Saberton Avenue
Sheridan, Wyoming 82801
Phone 307-674-0609

LOVELAND OFFICE
1635 Foxtrail Drive, Suite 204
Loveland, Colorado 80538
Phone 970-776-4331

DRAFTED BY:	LMO	CHECKED BY:	JRS
DATE DRAFTED:	3/11/16	DATE SURVEYED:	8/24/15
REVISED:		FILE NAME:	15-72