

June 3, 2016



410 17th Street, Suite 1400
Denver, CO 80202
(720) 440-6100 phone
(720) 305-0804 fax

Bonanzacrk.com

Colorado Oil and Gas Conservation Commission
The Chancery Building
1120 Lincoln Street, Suite 801
Denver, CO 80203
Matthew Lepore, Director

Re: Notice of 318A.a.(4)D. Proposed Niobrara Horizontal Wellbore Spacing Unit

North Platte Y44-E14-35HNB

SHL: SWSW (1175' FSL, 1003' FWL) Section 36-T5N-R63W, Weld County, CO

Top of Production: (430' FSL, 470' FEL) Section 35-T5N-R63W, Weld County, CO

Bottom of Production: (430' FSL, 470' FWL) Section 35-T5N-R63W, Weld County, CO

Director Lepore:

Bonanza Creek Energy Operating Company LLC ("Bonanza") intends to permit, drill and operate the referenced Niobrara Horizontal Well. As defined by Colorado Oil and Gas Conservation Commission (COGCC) Rule 318A.a.(4)D., Bonanza proposes the following wellbore spacing unit:

S/2S/2 Section 35-T5N-R63W Weld County, CO – containing 160 acres more or less

N/2N/2 Section 2-T4N-R63W, Weld County, CO – containing 160 acres more or less

NW/4NW/4 Section 1, T4N-R63W, Weld County, CO – containing 40 acres more or less

A map depicting the proposed wellbore spacing unit is attached, for your reference. Bonanza is the sole mineral lease holder in the proposed spacing unit, and no mineral owner notifications were required.

Bonanza respectfully requests that you review the enclosed wellbore spacing unit documentation and approve the referenced APD.

Please do not hesitate to call or email me at (303) 803-1718 or Jvigil@Bonanzacrk.com, should you have any questions pertaining to this matter.

Thank you for your cooperation.

Sincerely,

A handwritten signature in blue ink that reads 'J. Vigil'.

Julie L. Vigil

Sr. Regulatory Specialist

BONANZA CREEK ENERGY OPERATING COMPANY LLC

CORPORATE OFFICE
410 17th Street, Suite 1400
Denver, CO 80202
Office: (720)440-6100

MAGNOLIA OFFICE
50 Columbia 300
Magnolia, AR 71753
Office: (870) 235-0400

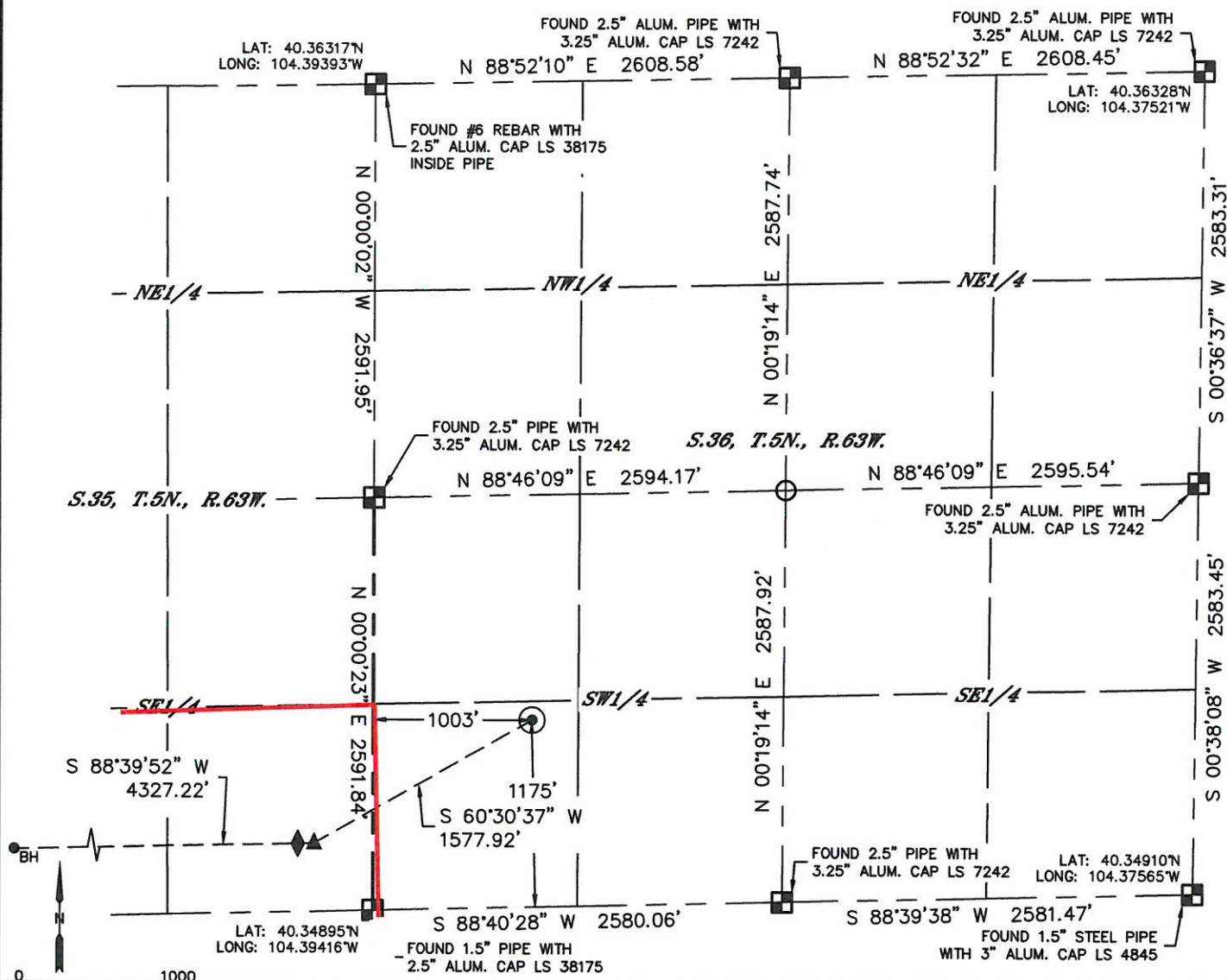


Lat40°, Inc. 6250 W. 10th Street, Unit 2, Greeley, CO 970-515-5294

WELL LOCATION CERTIFICATE

NORTH PLATTE Y44-E14-35HNB

SECTION: 36
TOWNSHIP: 5N
RANGE: 63W
6TH. P.M.
WELD COUNTY, CO



**BONANZA
CREEK**



Wellbore Spacing Unit Outline



Proposed Spacing Unit Map

November 5, 2015 KK

North Platte Y44-E14-35HNB
S/2S/2 of Sec. 35, T5N, R63W
N/2N/2 of Sec. 2, T4N, R63W
NW/4NW/4 of Sec. 1, T4N, R63W
Weld County, Colorado

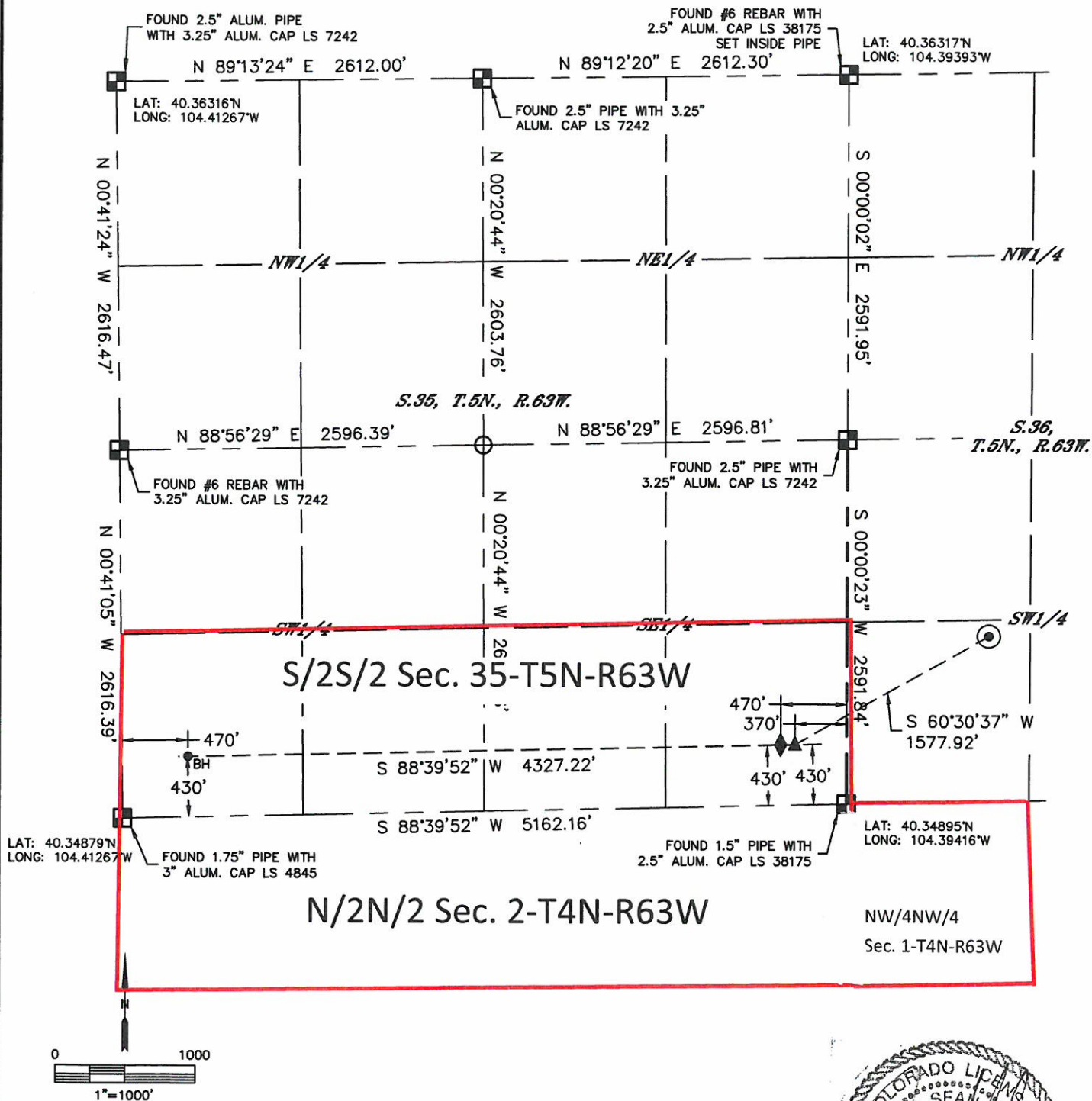


Lat40°, Inc. 6250 W. 10th Street, Unit 2, Greeley, CO 970-515-5294

WELL LOCATION CERTIFICATE

NORTH PLATTE Y44-E14-35HNB

SECTION: 36
TOWNSHIP: 5N
RANGE: 63W
6TH. P.M.
WELD COUNTY, CO



Proposed Spacing Unit Map

November 5, 2015

Page 2