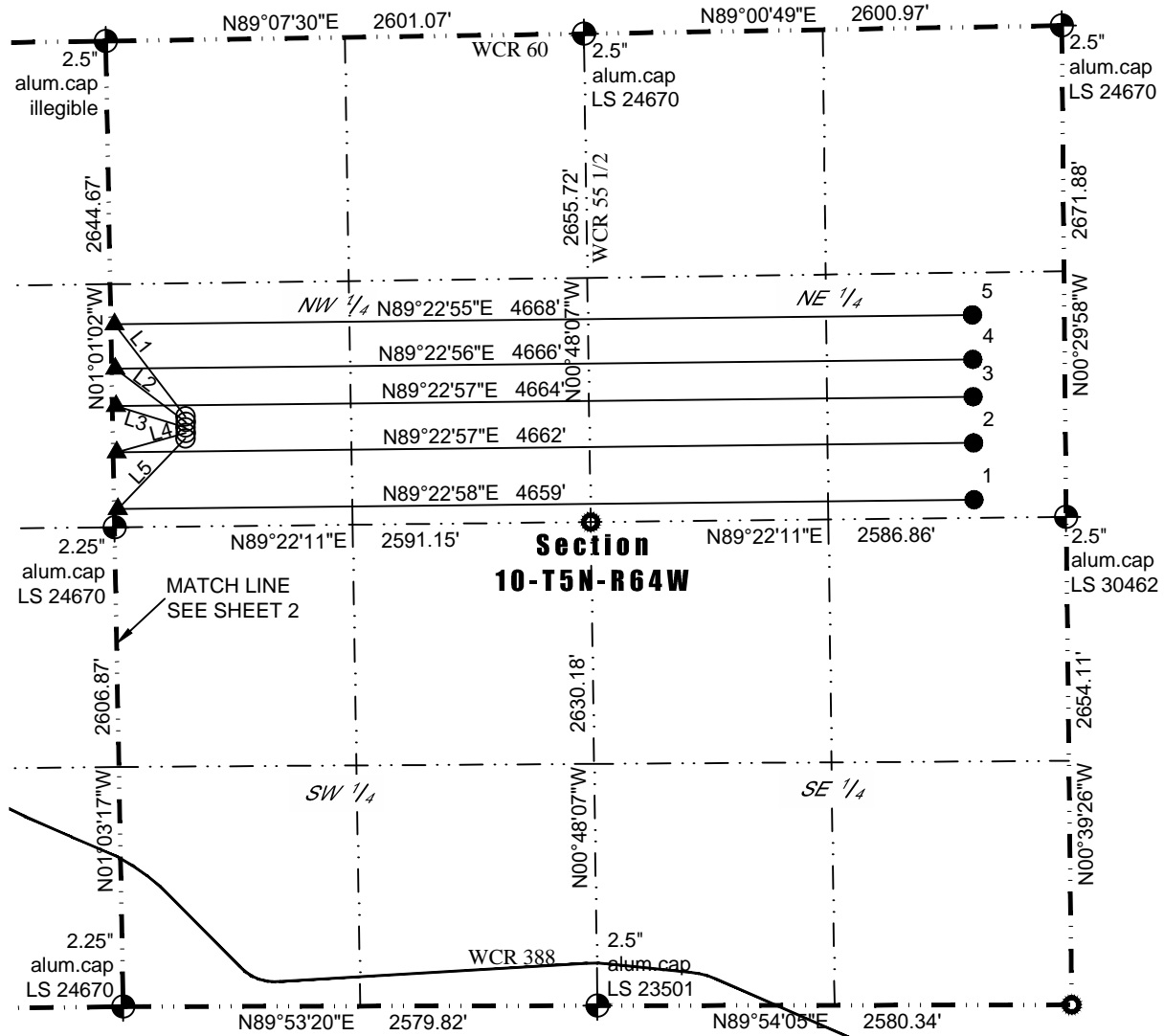




Washburn Land Surveying
www.WashburnSurveying.com
970-232-9645

MULI-WELL PLAN WACKER 5N64W10G PAD (EAST LATERALS)

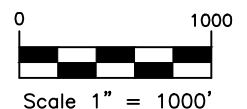
SECTION: 10
TOWNSHIP: 5N
RANGE: 64W
6TH P.M.
WELD COUNTY, CO



Line Table		
Line #	Length	Bearing
L1	633'	N37°36'02\"W
L2	479'	N52°53'10\"W
L3	396'	N72°54'43\"W
L4	389'	S74°21'54\"W
L5	532'	S43°49'30\"W

#	WELL NAME	BHL FOOTAGES				BHL LAT	BHL LONG	BHL S-T-R	BHL 1/4 1/4
1	WACKER 10G-302	2570	FNL	500	FEL	N40.414013°	W104.528850°	10-5-64	SENE
2	WACKER 10G-212	2261	FNL	500	FEL	N40.414861°	W104.528847°	10-5-64	SENE
3	WACKER 10G-312	2010	FNL	500	FEL	N40.415550°	W104.528845°	10-5-64	SENE
4	WACKER 10F-232	1807	FNL	500	FEL	N40.416108°	W104.528843°	10-5-64	SENE
5	WACKER 10F-302	1565	FNL	500	FEL	N40.416772°	W104.528841°	10-5-64	SENE

- LEGEND:**
- ALIQUOT CORNER AS DESCRIBED
 - SURFACE HOLE LOCATION (SHL)
 - ENTRY POINT (EP)
 - BOTTOM HOLE LOCATION (BHL)

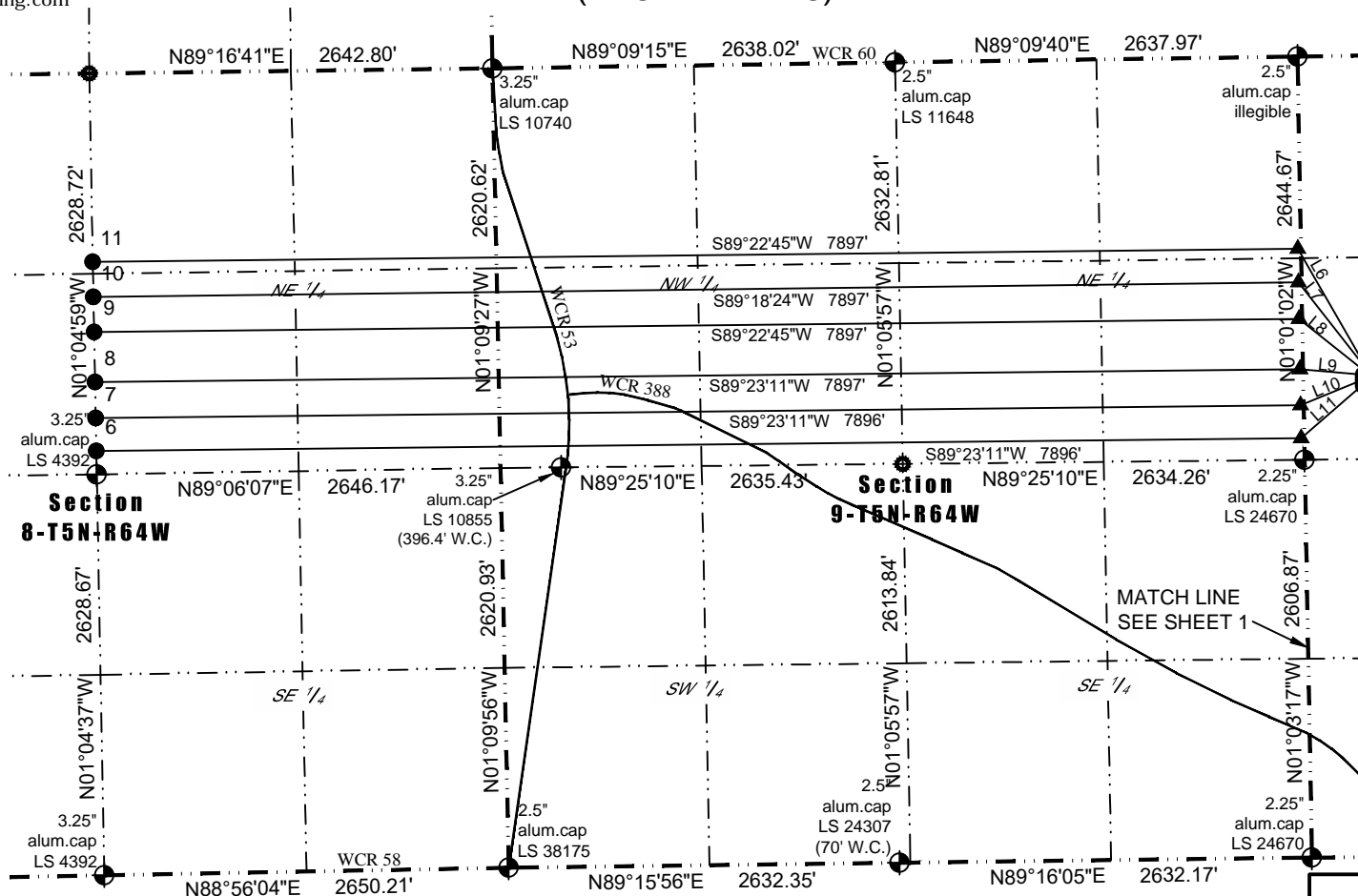




Washburn Land Surveying
www.WashburnSurveying.com
970-232-9645

MULTI-WELL PLAN WACKER 5N64W10G PAD (WEST LATERALS)

SECTION: 10
TOWNSHIP: 5N
RANGE: 64W
6TH P.M.
WELD COUNTY, CO



Scale 1" = 1200'

LEGEND:

- ALIQUOT CORNER AS DESCRIBED
- SURFACE HOLE LOCATION (SHL)
- ENTRY POINT (EP)
- BOTTOM HOLE LOCATION (BHL)

#	WELL NAME	BHL FOOTAGES			BHL LAT	BHL LONG	BHL S-T-R	BHL 1/4 1/4
6	WACKER 10G-304	2475	FNL	2647	FWL	N40.414132°	W104.574083°	8-5-64 SWNE
7	WACKER 10G-214	2260	FNL	2646	FWL	N40.414722°	W104.574089°	8-5-64 SWNE
8	WACKER 10G-314	2023	FNL	2646	FWL	N40.415373°	W104.574096°	8-5-64 SWNE
9	WACKER 10F-234	1695	FNL	2645	FWL	N40.416273°	W104.574106°	8-5-64 SWNE
10	WACKER 10F-304	1465	FNL	2645	FWL	N40.416905°	W104.574113°	8-5-64 SWNE
11	WACKER 10F-204	1235	FNL	2645	FWL	N40.417536°	W104.574120°	8-5-64 NWNE

Line Table		
Line #	Length	Bearing
L6	866'	N29°53'25"W
L7	693'	N38°02'01"W
L8	539'	N51°30'26"W
L9	418'	N84°58'25"W
L10	447'	S67°35'28"W
L11	542'	S49°00'15"W

DATE: 2/15/2016 SHEET 2 OF 3



Washburn Land Surveying
www.WashburnSurveying.com
970-232-9645

MULI-WELL PLAN WACKER 5N64W10G PAD

SECTION: 10
TOWNSHIP: 5N
RANGE: 64W
6TH P.M.
WELD COUNTY, CO

