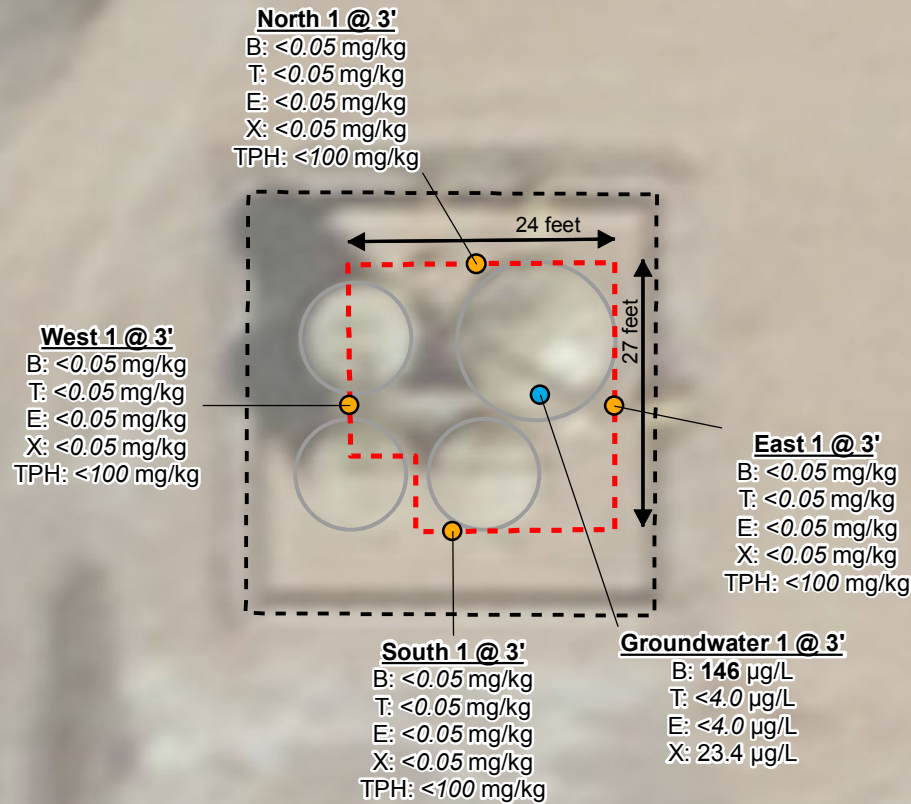


0 11.5 23
Feet
1 inch = 23 feet



Figure 2
Cannon Land
62N65W/3SESE
Facility Layout &
Analytical Results



Legend

- Soil Sample
- Groundwater Sample
- Excavation Extent
- Former Equipment
- Secondary Containment

Sample Location

B: benzene
T: toluene
E: ethylbenzene
X: xylenes
TPH: total petroleum hydrocarbons

Bold values exceed COGCC Table
910-1 allowable concentrations

Site Characteristics

Legal Location: SESE, Sec 3, T2N R65W
County: Weld
Land Use: Cropland
Topography: NA
Run-Off Risk: Very low
Soil Type: Aquolls and Aquepts, flooded

Cropland

REVISED	BY	COMMENT
6/1/2016	BJB	Figure 2
<div style="display: flex; justify-content: space-between; align-items: center;"> <div> <p>Apex Companies, LLC beau.bergstrom@apexcos.com M:\Projects\Anadarko\DJ_Basin\Remediation\Cannon_Land_62N65W_3SESE\Projects\CL_62N65W_3SESE_Fig2_dlg_20160601.mxd</p> </div> </div>		