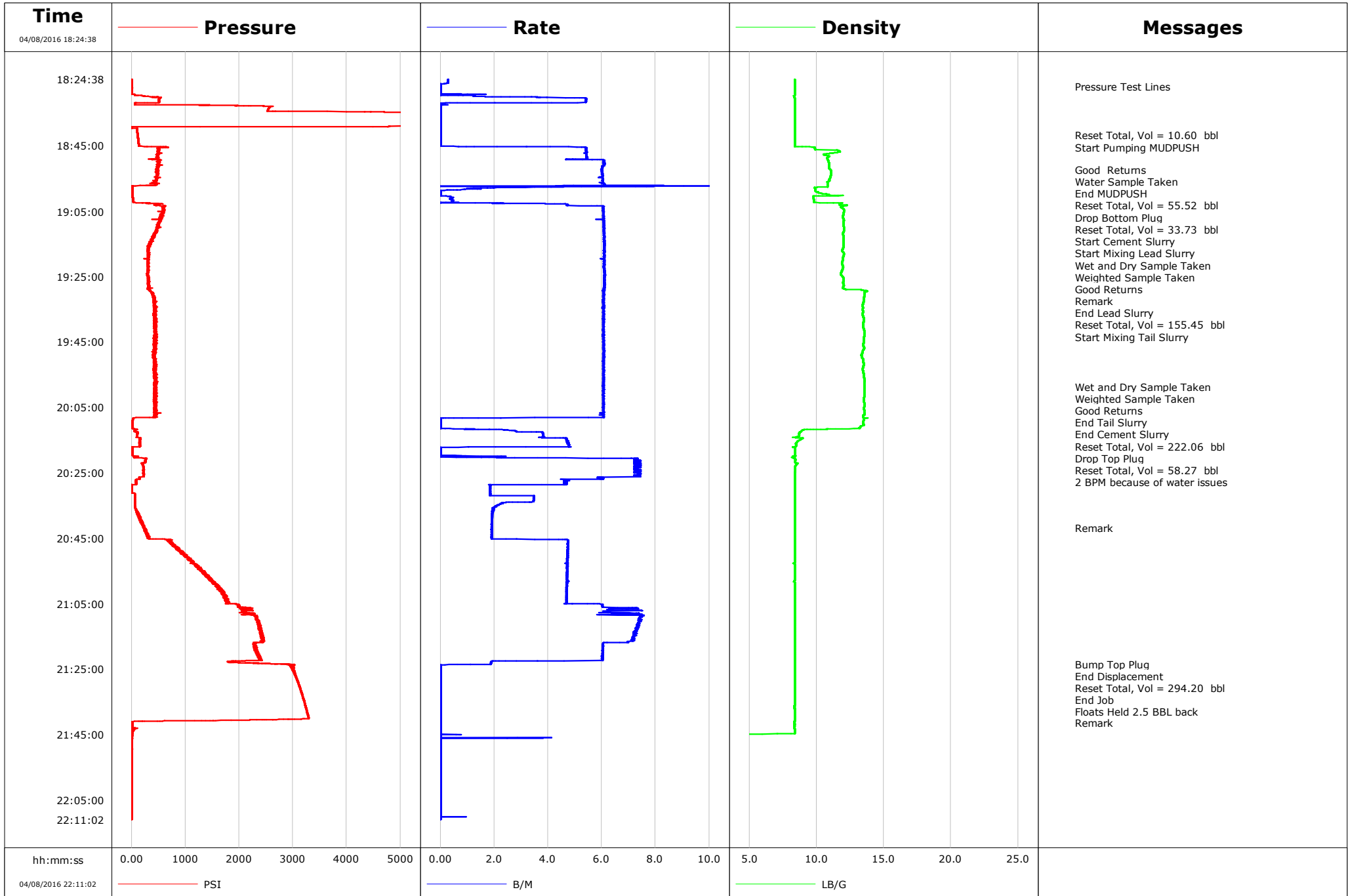


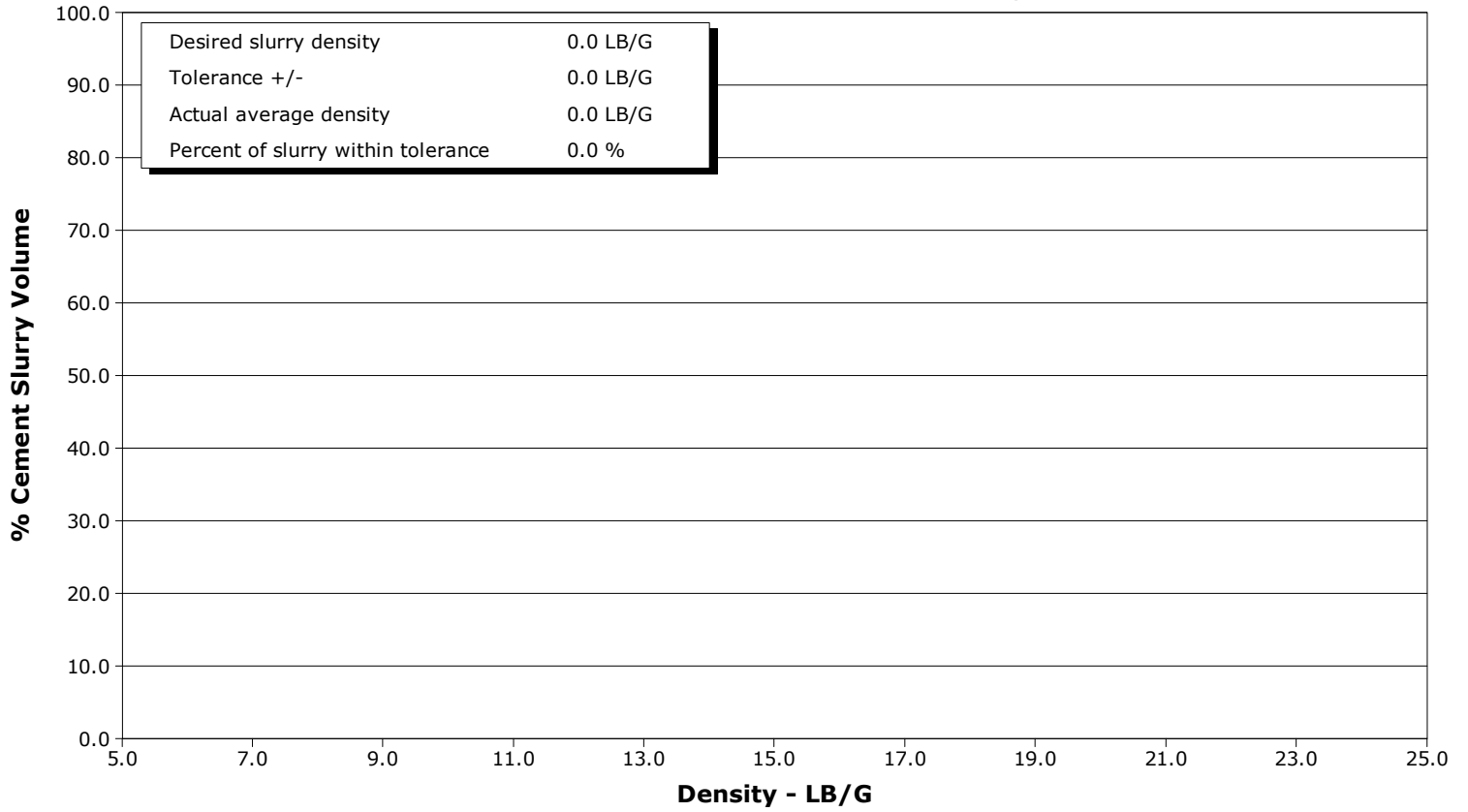
<b>Well</b>	Docheff	<b>Client</b>	Anadarko
<b>Field</b>	Wattenberg	<b>SIR No.</b>	2292307
<b>Engineer</b>	Silvester/Mendez	<b>Job Type</b>	Monobore Production
<b>Country</b>	United States	<b>Job Date</b>	04-08-2016



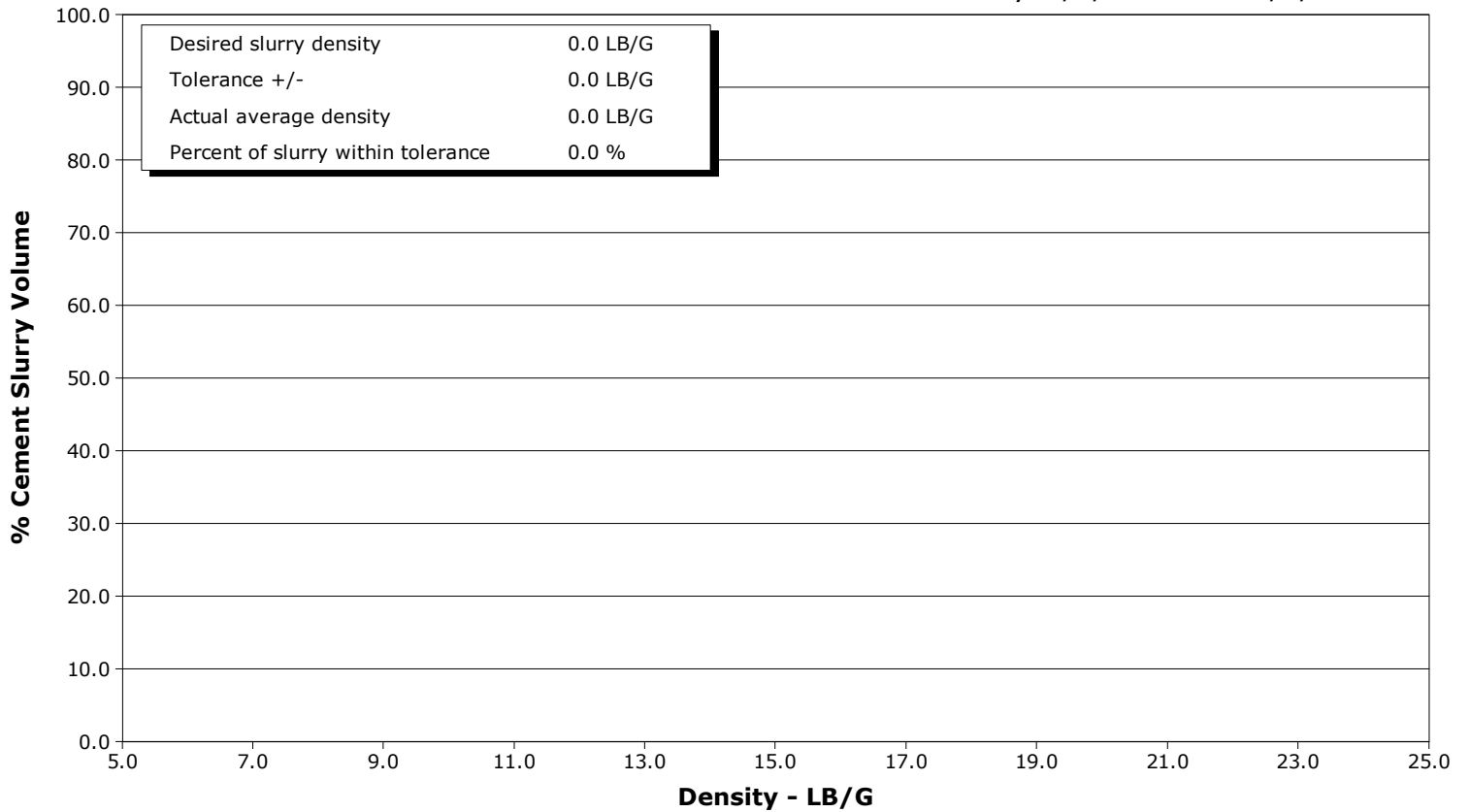
**Well** Docheff  
**Field** Wattenberg  
**Engineer** Silvester/Mendez  
**Country** United States

**Client** Anadarko  
**SIR No.** 2292307  
**Job Type** Monobore Production  
**Job Date** 04-08-2016

**Lead Slurry - 04/08/2016 19:05:18 to 04/08/2016 19:29:09**



**Tail Slurry - 04/08/2016 19:29:14 to 04/08/2016 20:05:44**



				Customer			Job Number			
				Anadarko			2292307			
Well		Location (legal)			Schlumberger Location			Job Start		
Docheff 32N-15HZ								Apr/08/2016		
Field		Formation Name/Type		Deviation	Bit Size		Well MD	Well TVD		
Wattenberg		Shale		deg	7.9 in		12767.0 ft	12767.0 ft		
County		State/Province		BHP	BHST	BHCT	Pore Press. Gradient			
Weld		Florida		3008 psi	230 degF	227 degF	lb/gal			
Well Master		API/UWI								
0631674705										
Rig Name	Drilled For	Service Via	Casing/Liner							
P461	Oil & Gas	Land	Depth, ft	Size, in	Weight, lb/ft	Grade	Thread			
Offshore Zone	Well Class	Well Type	12767.0	5.5	17.0	110	8RD			
	New	Development	0.0	0.0	0.0					
Drilling Fluid Type		Max. Density	Plastic Viscosity		Tubing/Drill Pipe					
LT OBM		9.80 lb/gal	cP		T/D	Depth, ft	Size, in	Weight, lb/ft	Grade	Thread
Service Line	Job Type									
Cementing	Monobore Production									
Max. Allowed Tub. Press	Max. Allowed Ann. Press	WH Connection		Perforations/Open Hole						
psi	psi	5 1/2		Top, ft	Bottom, ft	shot/ft	No. of Shots	Total Interval		
Service Instructions				ft	ft			ft		
				ft	ft			Diameter		
				ft	ft			in		
Treat Down		Displacement		Packer Type		Packer Depth				
Casing		295.0 bbl				ft				
Tubing Vol.		Casing Vol.		Annular Vol.		Openhole Vol.				
bbl		297.0 bbl		440.0 bbl		bbl				
Casing/Tubing Secured		1 Hole Vol. Circulated prior to Cement		Casing Tools			Squeeze Job			
<input type="checkbox"/>		<input type="checkbox"/>								
Lift Pressure		3008 psi		Shoe Type		Float		Squeeze Type		
Pipe Rotated		Pipe Reciprocated		Shoe Depth		12767.0 ft		Tool Type		
<input type="checkbox"/>		<input type="checkbox"/>		Stage Tool Type				Tool Depth		
No. Centralizers		Top Plugs	Bottom Plugs	Stage Tool Depth		ft		Tail Pipe Size		
		1	1					in		
Cement Head Type		Double		Collar Type		Float		Tail Pipe Depth		
Job Scheduled For		Arrived on Location	Leave Location		Collar Depth		ft		Sqz. Total Vol.	
Apr/08/2016		Apr/08/2016	Apr/08/2016						bbl	
Date	Time 24-hr clock	Treating Pressure PSI	Flow Rate B/M	Density LB/G	Volume BBL	Message				
04/08/2016	18:24:38	5	0.3	8.38	0.0	Started Acquisition				
04/08/2016	18:25:08	5	0.3	8.38	0.1					
04/08/2016	18:25:38	5	0.3	8.38	0.3					
04/08/2016	18:26:08	5	0.0	8.36	0.4					
04/08/2016	18:26:38	5	0.0	8.36	0.4					
04/08/2016	18:26:47	5	0.0	8.36	0.4	Pressure Test Lines				
04/08/2016	18:27:08	5	0.0	8.37	0.4					
04/08/2016	18:27:38	1	0.0	8.37	0.4					
04/08/2016	18:28:08	2	0.0	8.37	0.4					
04/08/2016	18:28:38	3	0.0	8.37	0.4					
04/08/2016	18:29:08	3	0.0	8.37	0.4					
04/08/2016	18:29:38	176	1.2	8.36	0.6					
04/08/2016	18:30:08	464	3.7	8.35	1.6					
04/08/2016	18:30:38	511	5.4	8.37	4.0					
04/08/2016	18:31:08	505	5.4	8.37	6.7					
04/08/2016	18:31:38	512	5.4	8.37	9.4					
04/08/2016	18:32:08	62	0.0	8.37	10.6					
04/08/2016	18:32:38	1344	0.0	8.37	10.6					
04/08/2016	18:33:08	2569	0.0	8.37	10.6					
04/08/2016	18:33:38	2546	0.0	8.37	10.6					
04/08/2016	18:34:08	2531	0.0	8.37	10.6					

Well Docheff 32N-15HZ			Field Wattenberg		Job Start Apr/08/2016	Customer Anadarko	Job Number 2292307
Date	Time 24-hr clock	Treating Pressure PSI	Flow Rate B/M	Density LB/G	Volume BBL	Message	
04/08/2016	18:35:08	5365	0.0	8.37	10.6		
04/08/2016	18:35:38	5341	0.0	8.37	10.6		
04/08/2016	18:36:08	5320	0.0	8.37	10.6		
04/08/2016	18:36:38	5300	0.0	8.37	10.6		
04/08/2016	18:37:08	5282	0.0	8.37	10.6		
04/08/2016	18:37:38	5265	0.0	8.37	10.6		
04/08/2016	18:38:08	5249	0.0	8.37	10.6		
04/08/2016	18:38:38	5235	0.0	8.37	10.6		
04/08/2016	18:39:08	4757	0.0	8.37	10.6		
04/08/2016	18:39:38	7	0.0	8.37	10.6		
04/08/2016	18:40:08	105	0.0	8.37	10.6		
04/08/2016	18:40:38	106	0.0	8.37	10.6		
04/08/2016	18:41:08	111	0.0	8.37	10.6		
04/08/2016	18:41:38	116	0.0	8.37	10.6		
04/08/2016	18:41:45	117	0.0	8.37	10.6		Reset Total, Vol = 10.60 bbl
04/08/2016	18:41:51	117	0.0	8.37	10.6		Start Pumping MUDPUSH
04/08/2016	18:42:08	117	0.0	8.37	10.6		
04/08/2016	18:42:38	120	0.0	8.37	10.6		
04/08/2016	18:43:08	123	0.0	8.37	10.6		
04/08/2016	18:43:38	125	0.0	8.37	10.6		
04/08/2016	18:44:08	127	0.0	8.37	10.6		
04/08/2016	18:44:38	131	0.0	8.37	10.6		
04/08/2016	18:45:08	136	0.0	8.37	10.6		
04/08/2016	18:45:38	526	5.4	9.86	12.5		
04/08/2016	18:46:08	509	5.4	9.88	15.2		
04/08/2016	18:46:38	507	5.4	11.71	17.9		
04/08/2016	18:47:08	508	5.4	11.35	20.6		
04/08/2016	18:47:38	510	5.4	10.53	23.4		
04/08/2016	18:48:08	499	5.4	10.93	26.1		
04/08/2016	18:48:38	483	5.4	10.80	28.8		
04/08/2016	18:49:08	374	4.7	10.82	31.4		
04/08/2016	18:49:38	485	6.1	10.88	34.4		
04/08/2016	18:50:08	482	6.1	10.91	37.4		
04/08/2016	18:50:38	488	6.1	10.93	40.4		
04/08/2016	18:51:08	474	6.0	10.93	43.5		
04/08/2016	18:51:38	491	6.0	10.93	46.5		
04/08/2016	18:52:08	482	6.0	10.98	49.5		
04/08/2016	18:52:19	475	6.0	11.02	50.6		Good Returns
04/08/2016	18:52:32	487	6.0	11.07	51.9		Water Sample Taken
04/08/2016	18:52:38	489	6.0	11.08	52.5		
04/08/2016	18:53:08	476	6.0	11.07	55.5		
04/08/2016	18:53:38	495	6.0	11.07	58.5		
04/08/2016	18:54:08	495	6.0	11.05	61.5		
04/08/2016	18:54:38	473	5.9	11.03	64.5		
04/08/2016	18:54:51	490	6.0	11.01	65.8		End MUDPUSH
04/08/2016	18:54:54	472	6.0	11.00	66.1		Reset Total, Vol = 55.52 bbl
04/08/2016	18:54:56	490	6.0	10.99	66.3		Drop Bottom Plug
04/08/2016	18:55:08	488	6.0	10.96	67.5		
04/08/2016	18:55:38	480	6.0	10.96	70.5		
04/08/2016	18:56:08	466	6.0	10.82	73.6		
04/08/2016	18:56:38	478	6.1	10.80	76.6		
04/08/2016	18:57:08	427	8.3	10.80	79.6		
04/08/2016	18:57:38	12	3.8	10.80	83.2		
04/08/2016	18:58:08	13	1.5	9.91	84.2		

Well Docheff 32N-15HZ			Field Wattenberg		Job Start Apr/08/2016	Customer Anadarko	Job Number 2292307
Date	Time 24-hr clock	Treating Pressure PSI	Flow Rate B/M	Density LB/G	Volume BBL	Message	
04/08/2016	18:59:08	14	0.0	10.12	84.6		
04/08/2016	18:59:38	13	0.0	10.34	84.6		
04/08/2016	19:00:08	15	0.0	11.08	84.6		
04/08/2016	19:00:38	15	0.4	9.76	84.7		
04/08/2016	19:01:08	34	0.4	9.78	84.9		
04/08/2016	19:01:38	33	0.5	9.81	85.1		
04/08/2016	19:02:08	35	0.4	9.82	85.3		
04/08/2016	19:02:38	306	2.2	11.84	85.8		
04/08/2016	19:03:08	417	4.7	12.26	88.0		
04/08/2016	19:03:38	615	6.1	11.81	90.8		
04/08/2016	19:04:08	589	6.1	11.92	93.8		
04/08/2016	19:04:38	614	6.1	12.04	96.8		
04/08/2016	19:05:08	588	6.0	12.03	99.8		Reset Total, Vol = 33.73 bbl
04/08/2016	19:05:12	601	6.1	12.03	100.2		Start Cement Slurry
04/08/2016	19:05:18	570	6.1	12.02	100.9		Start Mixing Lead Slurry
04/08/2016	19:05:38	583	6.1	11.99	102.9		
04/08/2016	19:06:08	578	6.1	11.98	105.9		
04/08/2016	19:06:38	554	6.1	11.96	108.9		
04/08/2016	19:07:08	528	6.1	11.97	112.0		
04/08/2016	19:07:38	551	6.1	12.02	115.0		
04/08/2016	19:08:08	517	6.1	12.00	118.0		
04/08/2016	19:08:38	490	6.1	12.00	121.1		
04/08/2016	19:09:08	507	6.1	12.00	124.1		
04/08/2016	19:09:38	502	6.1	12.01	127.1		
04/08/2016	19:10:03	494	6.1	12.02	129.7		Wet and Dry Sample Taken
04/08/2016	19:10:08	509	6.1	12.02	130.2		
04/08/2016	19:10:38	477	6.1	12.03	133.2		
04/08/2016	19:11:08	464	6.1	12.02	136.2		
04/08/2016	19:11:23	448	6.1	12.00	137.8		Good Returns
04/08/2016	19:11:38	455	6.1	11.97	139.3		
04/08/2016	19:12:08	422	6.1	11.96	142.3		
04/08/2016	19:12:38	409	6.1	12.01	145.4		
04/08/2016	19:13:08	386	6.1	12.01	148.4		
04/08/2016	19:13:38	386	6.1	12.00	151.5		
04/08/2016	19:14:08	399	6.1	11.99	154.5		
04/08/2016	19:14:38	368	6.1	11.99	157.6		
04/08/2016	19:15:08	324	6.1	11.99	160.6		
04/08/2016	19:15:38	330	6.1	11.98	163.6		
04/08/2016	19:16:08	327	6.1	11.98	166.7		
04/08/2016	19:16:38	298	6.1	11.94	169.7		
04/08/2016	19:16:56	305	6.1	11.88	171.6		Remark
04/08/2016	19:17:08	309	6.1	11.88	172.8		
04/08/2016	19:17:38	328	6.1	11.99	175.8		
04/08/2016	19:18:08	326	6.1	12.02	178.9		
04/08/2016	19:18:38	303	6.1	12.00	181.9		
04/08/2016	19:19:08	314	6.1	11.96	185.0		
04/08/2016	19:19:38	321	6.1	11.97	188.0		
04/08/2016	19:20:08	312	6.1	11.94	191.0		
04/08/2016	19:20:38	288	6.1	11.89	194.1		
04/08/2016	19:21:08	291	6.1	11.89	197.1		
04/08/2016	19:21:38	299	6.1	11.96	200.2		
04/08/2016	19:22:08	310	6.1	11.97	203.2		
04/08/2016	19:22:38	297	6.1	11.94	206.3		
04/08/2016	19:23:08	302	6.1	11.90	209.3		

Well Docheff 32N-15HZ			Field Wattenberg		Job Start Apr/08/2016	Customer Anadarko	Job Number 2292307
Date	Time 24-hr clock	Treating Pressure PSI	Flow Rate B/M	Density LB/G	Volume BBL	Message	
04/08/2016	19:24:08	300	6.1	11.81	215.4		
04/08/2016	19:24:38	311	6.1	11.85	218.5		
04/08/2016	19:25:08	325	6.1	11.96	221.5		
04/08/2016	19:25:38	307	6.1	12.00	224.6		
04/08/2016	19:26:08	303	6.1	11.99	227.6		
04/08/2016	19:26:38	307	6.1	11.98	230.7		
04/08/2016	19:27:08	320	6.1	11.98	233.7		
04/08/2016	19:27:38	319	6.1	12.01	236.8		
04/08/2016	19:28:08	324	6.1	11.98	239.8		
04/08/2016	19:28:38	304	6.1	11.97	242.9		
04/08/2016	19:29:08	342	6.1	13.39	245.9		
04/08/2016	19:29:09	343	6.1	13.43	246.0		End Lead Slurry
04/08/2016	19:29:12	332	6.1	13.51	246.3		Reset Total, Vol = 155.45 bbl
04/08/2016	19:29:14	331	6.1	13.59	246.5		Start Mixing Tail Slurry
04/08/2016	19:29:38	365	6.1	13.67	248.9		
04/08/2016	19:30:08	380	6.1	13.58	252.0		
04/08/2016	19:30:38	380	6.1	13.54	255.0		
04/08/2016	19:31:08	405	6.0	13.53	258.0		
04/08/2016	19:31:38	397	6.1	13.52	261.1		
04/08/2016	19:32:08	408	6.1	13.50	264.1		
04/08/2016	19:32:38	413	6.1	13.49	267.1		
04/08/2016	19:33:08	412	6.1	13.47	270.1		
04/08/2016	19:33:38	437	6.1	13.40	273.2		
04/08/2016	19:34:08	444	6.1	13.43	276.2		
04/08/2016	19:34:38	468	6.0	13.45	279.2		
04/08/2016	19:35:08	450	6.1	13.43	282.3		
04/08/2016	19:35:38	425	6.1	13.47	285.3		
04/08/2016	19:36:08	425	6.1	13.44	288.3		
04/08/2016	19:36:38	419	6.1	13.40	291.4		
04/08/2016	19:37:08	434	6.1	13.47	294.4		
04/08/2016	19:37:38	424	6.1	13.49	297.4		
04/08/2016	19:38:08	421	6.1	13.50	300.5		
04/08/2016	19:38:38	422	6.1	13.50	303.5		
04/08/2016	19:39:08	426	6.1	13.48	306.5		
04/08/2016	19:39:38	433	6.1	13.47	309.5		
04/08/2016	19:40:08	429	6.1	13.47	312.6		
04/08/2016	19:40:38	419	6.1	13.48	315.6		
04/08/2016	19:41:08	432	6.0	13.51	318.6		
04/08/2016	19:41:38	447	6.1	13.54	321.7		
04/08/2016	19:42:08	451	6.0	13.56	324.7		
04/08/2016	19:42:38	433	6.1	13.54	327.7		
04/08/2016	19:43:08	431	6.0	13.53	330.7		
04/08/2016	19:43:38	453	6.1	13.52	333.8		
04/08/2016	19:44:08	457	6.1	13.51	336.8		
04/08/2016	19:44:38	424	6.1	13.50	339.8		
04/08/2016	19:45:08	416	6.1	13.50	342.9		
04/08/2016	19:45:38	427	6.1	13.47	345.9		
04/08/2016	19:46:08	419	6.1	13.47	348.9		
04/08/2016	19:46:38	424	6.1	13.52	352.0		
04/08/2016	19:47:08	432	6.1	13.51	355.0		
04/08/2016	19:47:38	427	6.1	13.45	358.0		
04/08/2016	19:48:08	411	6.1	13.42	361.1		
04/08/2016	19:48:38	451	6.1	13.38	364.1		
04/08/2016	19:49:08	424	6.1	13.33	367.1		

Well Docheff 32N-15HZ			Field Wattenberg		Job Start Apr/08/2016	Customer Anadarko	Job Number 2292307
Date	Time 24-hr clock	Treating Pressure PSI	Flow Rate B/M	Density LB/G	Volume BBL	Message	
04/08/2016	19:50:08	420	6.1	13.45	373.2		
04/08/2016	19:50:38	422	6.0	13.46	376.2		
04/08/2016	19:51:08	444	6.1	13.48	379.3		
04/08/2016	19:51:38	444	6.0	13.50	382.3		
04/08/2016	19:52:08	432	6.0	13.50	385.3		
04/08/2016	19:52:38	437	6.1	13.47	388.4		
04/08/2016	19:53:08	412	6.1	13.43	391.4		
04/08/2016	19:53:38	428	6.1	13.44	394.4		
04/08/2016	19:54:08	429	6.1	13.47	397.5		
04/08/2016	19:54:38	422	6.1	13.50	400.5		
04/08/2016	19:55:08	453	6.1	13.51	403.5		
04/08/2016	19:55:38	465	6.1	13.50	406.5		
04/08/2016	19:56:08	454	6.1	13.54	409.6		
04/08/2016	19:56:38	436	6.1	13.56	412.6		
04/08/2016	19:57:08	425	6.1	13.55	415.6		
04/08/2016	19:57:38	433	6.1	13.53	418.7		
04/08/2016	19:58:08	455	6.1	13.54	421.7		
04/08/2016	19:58:38	427	6.1	13.54	424.7		
04/08/2016	19:58:43	447	6.1	13.54	425.2		Wet and Dry Sample Taken
04/08/2016	19:58:44	447	6.1	13.54	425.3		Weighted Sample Taken
04/08/2016	19:58:45	435	6.1	13.54	425.4		Good Returns
04/08/2016	19:59:08	419	6.0	13.54	427.8		
04/08/2016	19:59:38	420	6.1	13.54	430.8		
04/08/2016	20:00:08	452	6.1	13.54	433.8		
04/08/2016	20:00:38	464	6.1	13.54	436.8		
04/08/2016	20:01:08	426	6.1	13.54	439.9		
04/08/2016	20:01:38	436	6.1	13.53	442.9		
04/08/2016	20:02:08	419	6.1	13.52	445.9		
04/08/2016	20:02:38	425	6.1	13.50	449.0		
04/08/2016	20:03:08	437	6.1	13.50	452.0		
04/08/2016	20:03:38	445	6.0	13.54	455.0		
04/08/2016	20:04:08	457	6.1	13.59	458.0		
04/08/2016	20:04:38	444	6.1	13.56	461.1		
04/08/2016	20:05:08	411	6.1	13.51	464.1		
04/08/2016	20:05:38	423	6.1	13.52	467.1		
04/08/2016	20:05:44	435	6.1	13.53	467.7		End Tail Slurry
04/08/2016	20:05:47	426	6.1	13.54	468.0		End Cement Slurry
04/08/2016	20:05:50	437	6.1	13.55	468.3		Reset Total, Vol = 222.06 bbl
04/08/2016	20:05:53	437	6.0	13.55	468.7		Drop Top Plug
04/08/2016	20:06:08	432	6.0	13.56	470.2		
04/08/2016	20:06:38	410	6.0	13.56	473.2		
04/08/2016	20:07:08	443	6.1	13.56	476.2		
04/08/2016	20:07:38	430	6.1	13.47	479.2		
04/08/2016	20:08:08	334	5.5	13.47	482.3		
04/08/2016	20:08:38	23	0.0	13.51	482.5		
04/08/2016	20:09:08	14	0.0	13.49	482.5		
04/08/2016	20:09:38	14	0.0	13.49	482.5		
04/08/2016	20:10:08	10	0.0	13.49	482.5		
04/08/2016	20:10:38	12	0.0	13.37	482.5		
04/08/2016	20:11:08	14	0.0	13.23	482.5		
04/08/2016	20:11:38	61	1.0	10.76	482.6		
04/08/2016	20:12:08	59	2.8	8.90	483.7		
04/08/2016	20:12:38	117	3.8	8.76	485.3		
04/08/2016	20:13:08	111	3.8	8.69	487.2		

Well Docheff 32N-15HZ			Field Wattenberg		Job Start Apr/08/2016	Customer Anadarko	Job Number 2292307
Date	Time 24-hr clock	Treating Pressure PSI	Flow Rate B/M	Density LB/G	Volume BBL	Message	
04/08/2016	20:14:08	104	3.7	8.51	491.0		
04/08/2016	20:14:38	154	4.7	8.88	493.2		
04/08/2016	20:15:08	150	4.7	8.67	495.5		
04/08/2016	20:15:38	155	4.7	8.55	497.9		
04/08/2016	20:16:08	157	4.7	8.45	500.3		
04/08/2016	20:16:38	153	4.8	8.50	502.6		
04/08/2016	20:17:08	28	1.0	8.24	504.9		
04/08/2016	20:17:38	15	0.0	8.42	504.9		
04/08/2016	20:18:08	14	0.0	8.42	504.9		
04/08/2016	20:18:38	14	0.0	8.41	504.9		
04/08/2016	20:19:08	13	0.0	8.41	504.9		
04/08/2016	20:19:38	13	0.0	8.41	504.9		
04/08/2016	20:20:08	48	0.0	8.37	505.3		
04/08/2016	20:20:38	266	7.3	8.35	506.9		
04/08/2016	20:21:08	256	7.3	8.43	510.5		
04/08/2016	20:21:38	256	7.2	8.43	514.2		
04/08/2016	20:22:08	200	7.2	8.59	517.8		
04/08/2016	20:22:38	217	7.4	8.47	521.5		
04/08/2016	20:23:08	221	7.3	8.41	525.1		
04/08/2016	20:23:20	220	7.3	8.41	526.6		Reset Total, Vol = 58.27 bbl
04/08/2016	20:23:23	215	7.4	8.41	527.0		2 BPM because of water issues
04/08/2016	20:23:38	227	7.2	8.41	528.8		
04/08/2016	20:24:08	221	7.4	8.40	532.4		
04/08/2016	20:24:38	224	7.4	8.40	536.1		
04/08/2016	20:25:08	227	7.3	8.38	539.8		
04/08/2016	20:25:38	229	7.3	8.38	543.4		
04/08/2016	20:26:08	222	7.2	8.38	547.1		
04/08/2016	20:26:38	157	6.1	8.38	550.3		
04/08/2016	20:27:08	86	4.7	8.39	553.1		
04/08/2016	20:27:38	88	4.6	8.39	555.4		
04/08/2016	20:28:08	87	4.6	8.38	557.8		
04/08/2016	20:28:38	-7	3.8	8.38	560.1		
04/08/2016	20:29:08	5	1.8	8.38	561.0		
04/08/2016	20:29:38	4	1.9	8.38	562.0		
04/08/2016	20:30:08	3	1.8	8.38	562.9		
04/08/2016	20:30:38	2	1.9	8.38	563.8		
04/08/2016	20:31:08	1	1.8	8.38	564.7		
04/08/2016	20:31:38	60	1.8	8.37	565.7		
04/08/2016	20:32:08	60	3.5	8.37	566.8		
04/08/2016	20:32:38	59	3.5	8.37	568.5		
04/08/2016	20:33:08	59	3.5	8.36	570.2		
04/08/2016	20:33:38	59	3.5	8.36	572.0		
04/08/2016	20:34:08	62	2.3	8.36	573.5		
04/08/2016	20:34:38	63	2.2	8.36	574.7		
04/08/2016	20:35:08	64	2.1	8.36	575.7		
04/08/2016	20:35:38	69	2.0	8.36	576.7		
04/08/2016	20:36:08	84	2.0	8.36	577.7		
04/08/2016	20:36:38	91	1.9	8.36	578.7		
04/08/2016	20:37:08	100	1.9	8.36	579.7		
04/08/2016	20:37:38	135	1.9	8.36	580.6		
04/08/2016	20:38:08	154	1.9	8.36	581.6		
04/08/2016	20:38:38	124	1.9	8.36	582.6		
04/08/2016	20:39:08	149	1.9	8.36	583.5		
04/08/2016	20:39:38	168	1.9	8.36	584.5		

Well Docheff 32N-15HZ			Field Wattenberg		Job Start Apr/08/2016	Customer Anadarko	Job Number 2292307
Date	Time 24-hr clock	Treating Pressure PSI	Flow Rate B/M	Density LB/G	Volume BBL	Message	
04/08/2016	20:40:38	215	1.9	8.36	586.4		
04/08/2016	20:41:08	211	1.9	8.36	587.3		
04/08/2016	20:41:38	218	1.9	8.36	588.3		
04/08/2016	20:41:46	242	1.9	8.36	588.6	Remark	
04/08/2016	20:42:08	235	1.9	8.36	589.3		
04/08/2016	20:42:38	262	1.9	8.36	590.2		
04/08/2016	20:43:08	264	1.9	8.36	591.2		
04/08/2016	20:43:38	319	1.9	8.36	592.1		
04/08/2016	20:44:08	315	1.9	8.36	593.1		
04/08/2016	20:44:38	291	1.9	8.36	594.0		
04/08/2016	20:45:08	317	1.9	8.36	595.0		
04/08/2016	20:45:38	669	4.7	8.36	596.8		
04/08/2016	20:46:08	702	4.7	8.36	599.2		
04/08/2016	20:46:38	771	4.7	8.36	601.6		
04/08/2016	20:47:08	797	4.7	8.36	603.9		
04/08/2016	20:47:38	796	4.7	8.36	606.3		
04/08/2016	20:48:08	867	4.7	8.36	608.7		
04/08/2016	20:48:38	873	4.7	8.36	611.0		
04/08/2016	20:49:08	936	4.7	8.36	613.4		
04/08/2016	20:49:38	966	4.7	8.36	615.7		
04/08/2016	20:50:08	981	4.7	8.36	618.1		
04/08/2016	20:50:38	1002	4.7	8.36	620.5		
04/08/2016	20:51:08	1083	4.7	8.36	622.8		
04/08/2016	20:51:38	1060	4.7	8.36	625.2		
04/08/2016	20:52:08	1148	4.7	8.36	627.5		
04/08/2016	20:52:38	1172	4.7	8.30	629.9		
04/08/2016	20:53:08	1174	4.7	8.36	632.3		
04/08/2016	20:53:38	1182	4.7	8.36	634.6		
04/08/2016	20:54:08	1274	4.7	8.36	637.0		
04/08/2016	20:54:38	1264	4.7	8.37	639.3		
04/08/2016	20:55:08	1288	4.7	8.37	641.7		
04/08/2016	20:55:38	1391	4.7	8.36	644.0		
04/08/2016	20:56:08	1421	4.7	8.36	646.4		
04/08/2016	20:56:38	1401	4.7	8.36	648.7		
04/08/2016	20:57:08	1444	4.7	8.36	651.1		
04/08/2016	20:57:38	1489	4.7	8.36	653.4		
04/08/2016	20:58:08	1477	4.7	8.34	655.8		
04/08/2016	20:58:38	1535	4.7	8.36	658.2		
04/08/2016	20:59:08	1586	4.7	8.36	660.5		
04/08/2016	20:59:38	1590	4.7	8.36	662.9		
04/08/2016	21:00:08	1636	4.7	8.36	665.2		
04/08/2016	21:00:38	1646	4.7	8.36	667.5		
04/08/2016	21:01:08	1629	4.7	8.36	669.9		
04/08/2016	21:01:38	1728	4.7	8.36	672.2		
04/08/2016	21:02:08	1744	4.7	8.36	674.6		
04/08/2016	21:02:38	1706	4.7	8.36	676.9		
04/08/2016	21:03:08	1731	4.7	8.36	679.3		
04/08/2016	21:03:38	1797	4.7	8.36	681.6		
04/08/2016	21:04:08	1736	4.7	8.36	683.9		
04/08/2016	21:04:38	1770	4.7	8.36	686.3		
04/08/2016	21:05:08	1962	6.0	8.36	688.7		
04/08/2016	21:05:38	1994	6.0	8.36	691.7		
04/08/2016	21:06:08	2059	6.0	8.36	694.8		
04/08/2016	21:06:38	2059	6.3	8.36	698.2		

Well Docheff 32N-15HZ			Field Wattenberg		Job Start Apr/08/2016	Customer Anadarko		Job Number 2292307
Date	Time 24-hr clock	Treating Pressure PSI	Flow Rate B/M	Density LB/G	Volume BBL	Message		
04/08/2016	21:07:38	2104	6.3	8.36	704.8			
04/08/2016	21:08:08	2298	6.6	8.36	708.2			
04/08/2016	21:08:38	2336	7.6	8.36	711.7			
04/08/2016	21:09:08	2339	7.5	8.37	715.5			
04/08/2016	21:09:38	2307	7.4	8.37	719.2			
04/08/2016	21:10:08	2366	7.4	8.37	722.9			
04/08/2016	21:10:38	2329	7.4	8.37	726.6			
04/08/2016	21:11:08	2378	7.4	8.36	730.3			
04/08/2016	21:11:38	2390	7.4	8.37	733.9			
04/08/2016	21:12:08	2383	7.3	8.37	737.6			
04/08/2016	21:12:38	2402	7.3	8.37	741.3			
04/08/2016	21:13:08	2390	7.3	8.37	744.9			
04/08/2016	21:13:38	2412	7.3	8.37	748.5			
04/08/2016	21:14:08	2382	7.2	8.37	752.1			
04/08/2016	21:14:38	2429	7.3	8.37	755.8			
04/08/2016	21:15:08	2432	7.2	8.37	759.4			
04/08/2016	21:15:38	2410	7.1	8.37	762.9			
04/08/2016	21:16:08	2461	7.1	8.37	766.5			
04/08/2016	21:16:38	2416	7.0	8.37	770.1			
04/08/2016	21:17:08	2299	6.1	8.36	773.3			
04/08/2016	21:17:38	2285	6.0	8.36	776.4			
04/08/2016	21:18:08	2285	6.0	8.36	779.4			
04/08/2016	21:18:38	2314	6.0	8.36	782.4			
04/08/2016	21:19:08	2326	6.0	8.36	785.4			
04/08/2016	21:19:38	2348	6.0	8.36	788.4			
04/08/2016	21:20:08	2319	6.0	8.37	791.5			
04/08/2016	21:20:38	2335	6.0	8.36	794.5			
04/08/2016	21:21:08	2388	6.0	8.36	797.5			
04/08/2016	21:21:38	2384	6.0	8.36	800.5			
04/08/2016	21:22:08	2384	6.0	8.36	803.5			
04/08/2016	21:22:38	1855	1.9	8.36	805.9			
04/08/2016	21:23:08	2121	1.9	8.36	806.9			
04/08/2016	21:23:26	2665	1.9	8.36	807.4	Bump Top Plug		
04/08/2016	21:23:38	3017	1.1	8.36	807.8			
04/08/2016	21:23:47	3022	0.0	8.36	807.8	End Displacement		
04/08/2016	21:24:06	3000	0.0	8.36	807.8	Reset Total, Vol = 294.20 bbl		
04/08/2016	21:24:08	2984	0.0	8.36	807.8			
04/08/2016	21:24:38	3018	0.0	8.36	807.8			
04/08/2016	21:24:51	2998	0.0	8.36	807.8	End Job		
04/08/2016	21:24:59	3006	0.0	8.36	807.8	Floats Held 2.5 BBL back		
04/08/2016	21:25:08	2984	0.0	8.36	807.8			
04/08/2016	21:25:38	3028	0.0	8.36	807.8			
04/08/2016	21:26:08	3028	0.0	8.36	807.8			
04/08/2016	21:26:38	3029	0.0	8.36	807.8			
04/08/2016	21:27:08	3051	0.0	8.36	807.8			
04/08/2016	21:27:38	3063	0.0	8.36	807.8			
04/08/2016	21:28:08	3068	0.0	8.36	807.8			
04/08/2016	21:28:38	3084	0.0	8.36	807.8			
04/08/2016	21:29:08	3096	0.0	8.36	807.8			
04/08/2016	21:29:38	3105	0.0	8.36	807.8			
04/08/2016	21:30:08	3116	0.0	8.36	807.8			
04/08/2016	21:30:38	3127	0.0	8.36	807.8			
04/08/2016	21:31:08	3135	0.0	8.36	807.8			
04/08/2016	21:31:38	3146	0.0	8.36	807.8			

Well Docheff 32N-15HZ			Field Wattenberg		Job Start Apr/08/2016	Customer Anadarko		Job Number 2292307
Date	Time 24-hr clock	Treating Pressure PSI	Flow Rate B/M	Density LB/G	Volume BBL	Message		
04/08/2016	21:32:38	3165	0.0	8.36	807.8			
04/08/2016	21:33:08	3174	0.0	8.36	807.8			
04/08/2016	21:33:38	3184	0.0	8.36	807.8			
04/08/2016	21:34:08	3192	0.0	8.36	807.8			
04/08/2016	21:34:38	3202	0.0	8.36	807.8			
04/08/2016	21:35:08	3211	0.0	8.36	807.8			
04/08/2016	21:35:38	3220	0.0	8.36	807.8			
04/08/2016	21:36:08	3228	0.0	8.36	807.8			
04/08/2016	21:36:38	3236	0.0	8.36	807.8			
04/08/2016	21:37:08	3245	0.0	8.36	807.8			
04/08/2016	21:37:38	3252	0.0	8.36	807.8			
04/08/2016	21:38:08	3261	0.0	8.36	807.8			
04/08/2016	21:38:38	3269	0.0	8.36	807.8			
04/08/2016	21:39:08	3277	0.0	8.36	807.8			
04/08/2016	21:39:38	3284	0.0	8.36	807.8			
04/08/2016	21:40:08	3292	0.0	8.36	807.8			
04/08/2016	21:40:38	2049	0.0	8.36	807.8			
04/08/2016	21:41:08	11	0.0	8.36	807.8			
04/08/2016	21:41:24	13	0.0	8.36	807.8	Remark		
04/08/2016	21:41:38	12	0.0	8.36	807.8			
04/08/2016	21:42:08	15	0.0	8.36	807.8			
04/08/2016	21:42:38	13	0.0	8.36	807.8			
04/08/2016	21:43:08	83	0.0	8.36	807.8			
04/08/2016	21:43:38	41	0.0	8.36	807.8			
04/08/2016	21:44:08	9	0.0	8.36	807.8			
04/08/2016	21:44:38	10	0.0	8.37	807.8			
04/08/2016	21:45:08	9	0.0	0.28	807.9			
04/08/2016	21:45:38	9	0.0	0.12	807.9			
04/08/2016	21:46:08	8	2.5	0.86	808.0			
04/08/2016	21:46:38	9	0.0	0.01	808.1			
04/08/2016	21:47:08	9	0.0	0.01	808.1			
04/08/2016	21:47:38	9	0.0	0.01	808.1			
04/08/2016	21:48:08	9	0.0	0.01	808.1			
04/08/2016	21:48:38	9	0.0	0.01	808.1			
04/08/2016	21:49:08	9	0.0	0.01	808.1			
04/08/2016	21:49:38	8	0.0	0.01	808.1			
04/08/2016	21:50:08	9	0.0	0.01	808.1			
04/08/2016	21:50:38	8	0.0	0.01	808.1			
04/08/2016	21:51:08	8	0.0	0.01	808.1			
04/08/2016	21:51:38	9	0.0	0.00	808.1			
04/08/2016	21:52:08	8	0.0	0.01	808.1			
04/08/2016	21:52:38	9	0.0	0.01	808.1			
04/08/2016	21:53:08	8	0.0	0.01	808.1			
04/08/2016	21:53:38	8	0.0	0.01	808.1			
04/08/2016	21:54:08	9	0.0	0.01	808.1			
04/08/2016	21:54:38	9	0.0	0.01	808.1			
04/08/2016	21:55:08	9	0.0	0.00	808.1			
04/08/2016	21:55:38	8	0.0	0.01	808.1			
04/08/2016	21:56:08	9	0.0	0.01	808.1			
04/08/2016	21:56:38	9	0.0	0.01	808.1			
04/08/2016	21:57:08	8	0.0	0.01	808.1			
04/08/2016	21:57:38	8	0.0	0.01	808.1			
04/08/2016	21:58:08	9	0.0	0.01	808.1			
04/08/2016	21:58:38	9	0.0	0.01	808.1			

Well		Field		Job Start		Customer		Job Number	
Docheff 32N-15HZ		Wattenberg		Apr/08/2016		Anadarko		2292307	
Date	Time 24-hr clock	Treating Pressure PSI	Flow Rate B/M	Density LB/G	Volume BBL	Message			
04/08/2016	21:59:38	8	0.0	0.01	808.1				
04/08/2016	22:00:08	8	0.0	0.01	808.1				
04/08/2016	22:00:38	9	0.0	0.01	808.1				
04/08/2016	22:01:08	8	0.0	0.01	808.1				
04/08/2016	22:01:38	9	0.0	0.01	808.1				
04/08/2016	22:02:08	9	0.0	0.01	808.1				
04/08/2016	22:02:38	8	0.0	0.01	808.1				
04/08/2016	22:03:08	8	0.0	0.01	808.1				
04/08/2016	22:03:38	8	0.0	0.01	808.1				
04/08/2016	22:04:08	8	0.0	0.01	808.1				
04/08/2016	22:04:38	7	0.0	0.01	808.1				
04/08/2016	22:05:08	8	0.0	0.01	808.1				
04/08/2016	22:05:38	8	0.0	0.01	808.1				
04/08/2016	22:06:08	8	0.0	0.01	808.1				
04/08/2016	22:06:38	9	0.0	0.01	808.1				
04/08/2016	22:07:08	8	0.0	0.01	808.1				
04/08/2016	22:07:38	9	0.0	0.01	808.1				
04/08/2016	22:08:08	8	0.0	0.01	808.1				
04/08/2016	22:08:38	8	0.0	0.01	808.1				
04/08/2016	22:09:08	7	0.0	0.01	808.1				
04/08/2016	22:09:38	7	0.0	0.01	808.1				
04/08/2016	22:10:08	8	0.0	0.09	808.1				

### Post Job Summary

Average Pump Rates, bbl/min				Volume of Fluid Injected, bbl			
Slurry	N2	Mud	Maximum Rate	Total Slurry	Mud	Spacer	N2
5.2			25.0	808.1	0.0	65.8	
Treating Pressure Summary, psi				Breakdown Fluid			
Maximum	Final	Average	Bump Plug to	Breakdown	Type	Volume	Density
5438	7	845				bbl	lb/gal
Avg. N2 Percent	Designed Slurry Volume	Displacement	Mix Water Temp	Cement Circulated to Surface?	Volume		
%	0.0 bbl	338.8 bbl	80 degF	<input type="checkbox"/>	bbl		
				Washed Thru Perfs	To		
				<input type="checkbox"/>	ft		
Customer or Authorized Representative		Schlumberger Supervisor			Circulation Lost	Job Completed	
Josh Johnson		Silvester/Mendez			<input type="checkbox"/>	<input type="checkbox"/>	
					-	-	

<b>Client:</b>	Anadarko
<b>Field:</b>	Wattenberg
<b>Rig:</b>	P461
<b>Well:</b>	Docheff
<b>Service Line:</b>	Cementing
<b>Job Type:</b>	Monobore Production

<b>Service Order #:</b>	
<b>Date:</b>	Apr/08/2016
<b>Operating Time (hh:mm):</b>	00:00
<b>Client Rep:</b>	Josh Johnson
<b>Schlumberger Engineer:</b>	Silvester/Mendez
<b>Schlumberger FSM:</b>	

**Main Objective:**

To be completed by Company Rep. Please answer Y (Yes) or N (No) and add any comments below.

		Score	Yes / No		Result
<b>1</b>	<b>HSE</b>				
1a	Free of lost time injury and compliance with SLB and loc. spec. HSE practice	5	yes <input checked="" type="checkbox"/>	no <input type="checkbox"/>	5
1b	Free of environmental spill or non-compliant discharge	5	yes <input checked="" type="checkbox"/>	no <input type="checkbox"/>	5
1c	Wellsite left clean	4	yes <input checked="" type="checkbox"/>	no <input type="checkbox"/>	4
Sub-total					100%

<b>2</b>	<b>Design / Preparation</b>				
2a	Program incl. job simulation (CemCADE) & pump schedule / tool hydraulic calcs	3	yes <input checked="" type="checkbox"/>	no <input type="checkbox"/>	3
2b	Equipment maintenance schedule completed / Green tagged	2	yes <input checked="" type="checkbox"/>	no <input type="checkbox"/>	2
2c	All materials and equipment required for job/contingency checked & on location	2	yes <input checked="" type="checkbox"/>	no <input type="checkbox"/>	2
2d	Safety / pre-job meeting conducted with all involved present	2	yes <input checked="" type="checkbox"/>	no <input type="checkbox"/>	2
Sub-total					100%

<b>3</b>	<b>Execution</b>				
3a	Lost time < 30 mins	3	yes <input checked="" type="checkbox"/>	no <input type="checkbox"/>	3
3b	Equipment pressure tested successfully	3	yes <input checked="" type="checkbox"/>	no <input type="checkbox"/>	3
3c	All key parameters monitored and recorded accurately (Pressure, Rate, Density)	2	yes <input checked="" type="checkbox"/>	no <input type="checkbox"/>	2
3d	Plugs / darts released and tested successfully	2	yes <input checked="" type="checkbox"/>	no <input type="checkbox"/>	2
3e	Density variation met expectations	2	yes <input checked="" type="checkbox"/>	no <input type="checkbox"/>	2
3f	Personnel performed as per expectations	2	yes <input checked="" type="checkbox"/>	no <input type="checkbox"/>	2
3g	Equipment performed as per expectations	2	yes <input checked="" type="checkbox"/>	no <input type="checkbox"/>	2
3h	Job pumped as per design	3	yes <input checked="" type="checkbox"/>	no <input type="checkbox"/>	3
3i	Did job start on time	2	yes <input checked="" type="checkbox"/>	no <input type="checkbox"/>	2
3j	Free of Operational failures (screen out, Cementing Example, etc.)	3	yes <input checked="" type="checkbox"/>	no <input type="checkbox"/>	3
Sub-total					100%

<b>4</b>	<b>Evaluation</b>				
4a	Main job objective achieved with no consequential non-productive time	10	yes <input checked="" type="checkbox"/>	no <input type="checkbox"/>	10
Sub-total					100%

**Total** 100%

**Comments:** (Please include a brief explanation for a "NO" response and summarize any innovations attempted on this well.)

<b>Client:</b>	<b>Schlumberger:</b>
<b>Client Signature:</b>	<b>Schlumberger Signature:</b>