

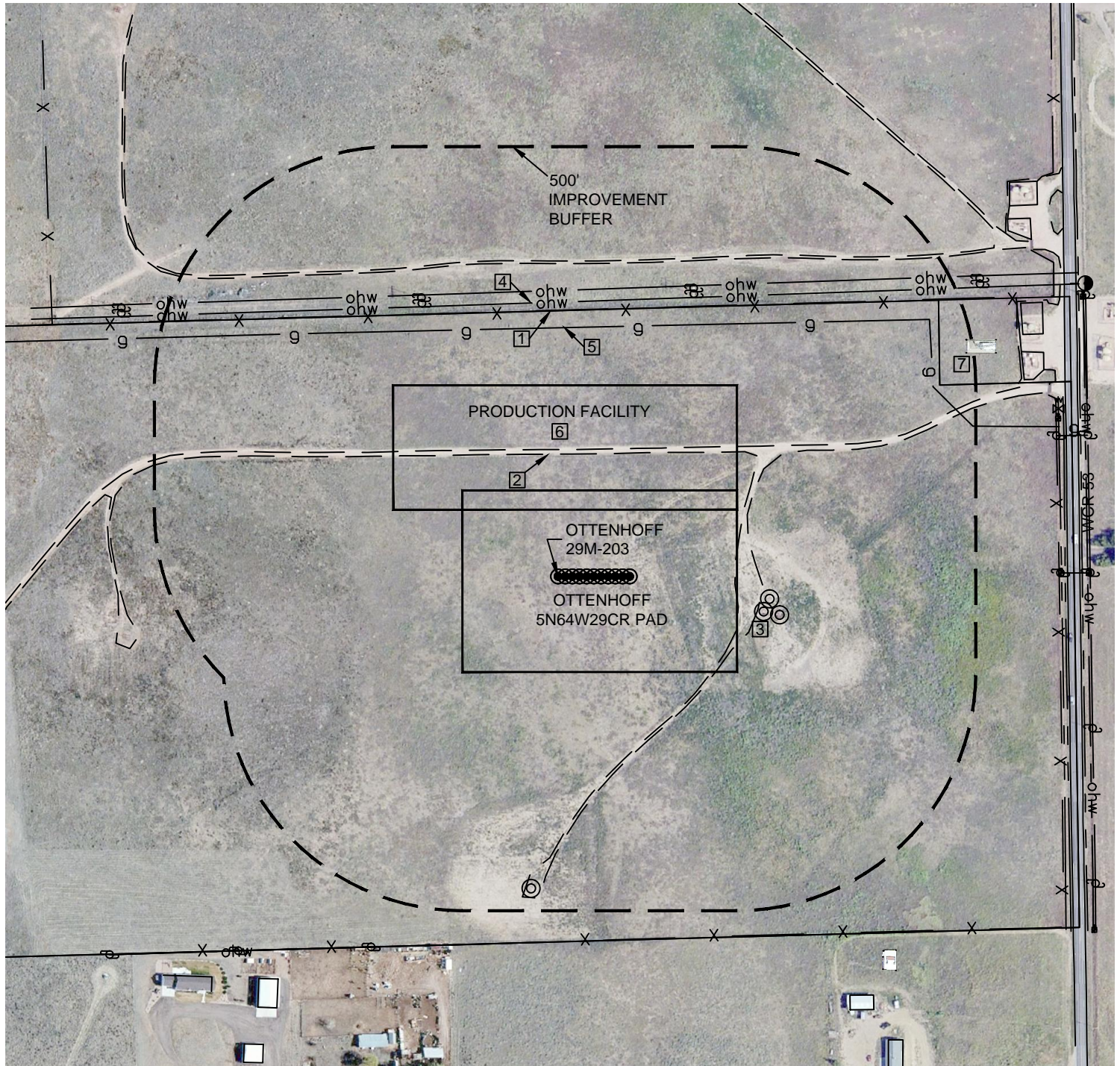


Washburn Land Surveying  
www.WashburnSurveying.com  
970-232-9645

# LOCATION DRAWING

## OTTENHOFF 5N64W29CR PAD

SECTION: 29  
TOWNSHIP: 5N  
RANGE: 64W  
6TH P.M.  
WELD COUNTY, CO



### LEGEND:

- POWER POLE
- EXISTING WELL
- OVERHEAD UTILITY LINE
- GAS LINE
- EDGE OF GRAVEL ROAD/ACCESS
- PROPERTY LINE
- ROAD SIDE/SHOULDER DITCH
- FENCE LINE



Scale 1" = 300'

DATE: 2/3/2016

SHEET 1 OF 2



Washburn Land Surveying  
www.WashburnSurveying.com  
970-232-9645

## LOCATION DRAWING OTTENHOFF 5N64W29CR PAD

SECTION: 29  
TOWNSHIP: 5N  
RANGE: 64W  
6TH P.M.  
WELD COUNTY, CO

### IMPROVEMENTS

(MEASUREMENTS ARE FROM THE PROPOSED OTTENHOFF 29M-203 WELL LOCATION)

- ① PROPERTY LINE: 556' N & 894' NE
- ② ACCESS: 256' N, 371' E & 655' N
- ③ EXISTING WELL: 437' E (OTTENHOFF 41-29), 445' E (OTTENHOFF 41-7B),  
447' E (OTTENHOFF 41-6B) & 656' S (CARLSON 5)
- ④ OVERHEAD UTILITY LINE: 574' N
- ⑤ GAS LINE LOCATES: 521' N & 880' NE
- ⑥ PROPOSED PRODUCTION FACILITIES: 140' N
- ⑦ CELL/RADIO TOWER: 975' NE