

**Operator:** Sunset Plugging and Equipment Inc  
**Well Name:** Farr #1-7-6-65  
**Legal:** SESW, Sec 7, T6N, R65W  
**Location:** Weld County, CO  
**API:** 05-123-11279

### Wellbore History

Spud Date: 11/18/1983  
 Surf Csg: 8.625", 24# @ 300'  
 Prod Csg: 4.5", 11.6# @ 7270'  
 TOC: below 6413', no CBL  
 Perfs: Codell: 7,168'-7,178'




### Previous P&A Procedure

CIBP @ 7,160' w/2 sks  
 Cut casing @ 6,413'  
 Pmp 35 sx @ 300', ½ in ½ out  
 Pmp 10 sx @ surface

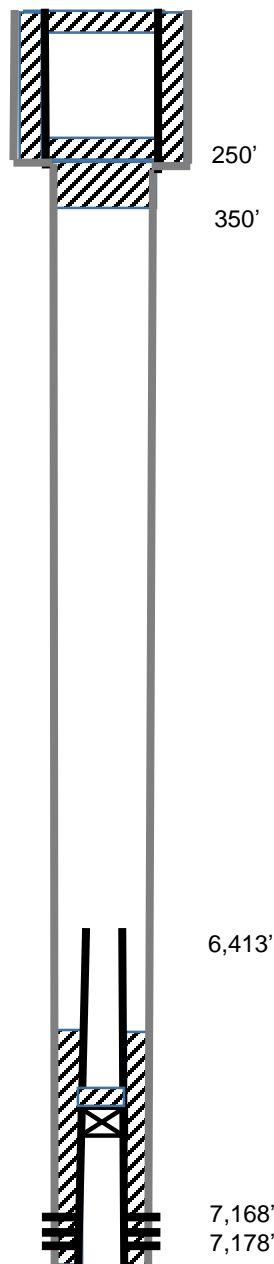
### Proposed P&A Procedure

Mill cement and ensure well is clean to 500'  
 Pmp 90 sx @ 3,200'  
 Pmp 90 sx @ 1,600'  
 Pmp 200 sx to surface (450'-0')

### Key

-  Existing Cement Coverage
-  CIBP
-  Cement Pumped

### Current



### Proposed

