

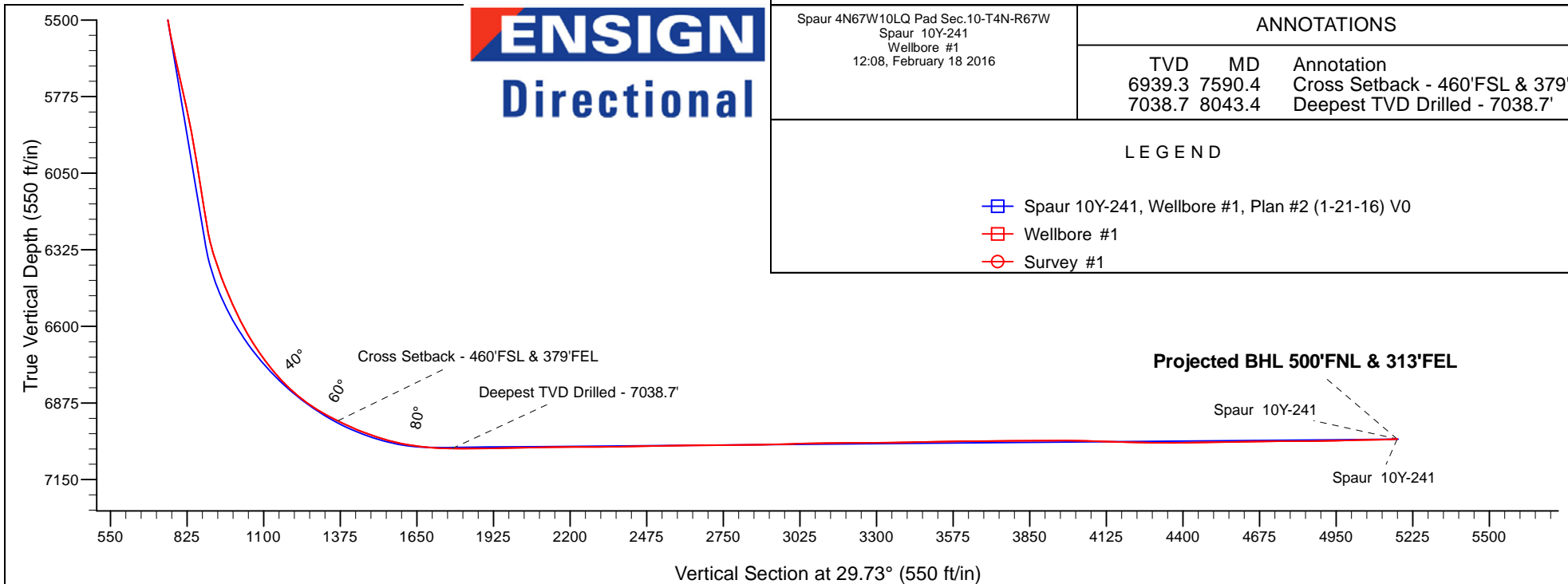
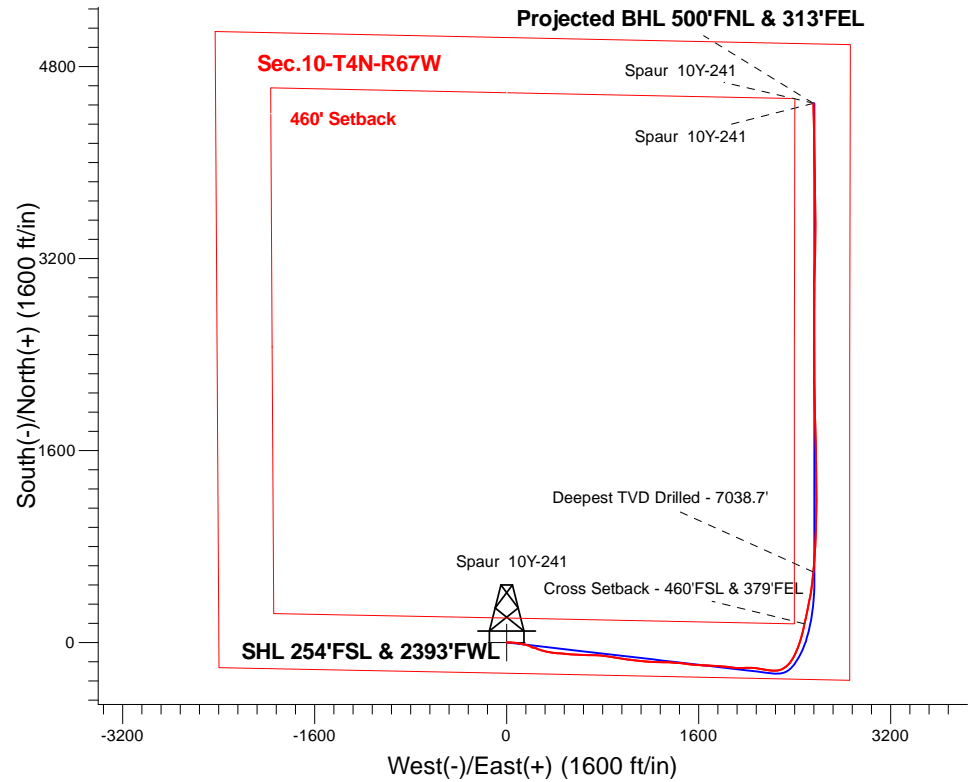
# PETROLEUM DEVELOPMENT CORP DJ Basin

Well Name: **Spaur 10Y-241**

Surface Location: Spaur 4N67W10LQ Pad Sec.10-T4N-R67W  
 North American Datum 1983 , US State Plane 1983, Colorado Northern Zone  
 Ground Elevation: 4831.0  
 +N/-S +E/-W Northing Easting Latitude Longitude Slot  
 0.0 0.0 1360127.24 3173449.67 40.320280 -104.877950  
 Ensign Rig #152 - RKB - 23'WELL @ 4854.0ft (Ensign Rig #152 - RKB - 23')

## FINAL SURVEY

Projected Bottom Hole Location  
 11951'MD 7004'TVD 4492'N & 2557'E of SHL  
 91.8 degree Incl @ 358.8 degree AZM



Spaur 4N67W10LQ Pad Sec.10-T4N-R67W  
 Spaur 10Y-241  
 Wellbore #1  
 12:08, February 18 2016

ANNOTATIONS		
TVD	MD	Annotation
6939.3	7590.4	Cross Setback - 460'FSL & 379'FEL
7038.7	8043.4	Deepest TVD Drilled - 7038.7'

### LEGEND

- Spaur 10Y-241, Wellbore #1, Plan #2 (1-21-16) V0
- Wellbore #1
- Survey #1



# Directional

## PETROLEUM DEVELOPMENT CORP DJ Basin

SEC.10-T4N-R67W

Spaur 4N67W10LQ Pad Sec.10-T4N-R67W

Spaur 10Y-241

Wellbore #1

Survey: Survey #1

## Standard Survey Report

18 February, 2016



<b>Company:</b>	PETROLEUM DEVELOPMENT CORP DJ Basin	<b>Local Co-ordinate Reference:</b>	Well Spaur 10Y-241
<b>Project:</b>	SEC.10-T4N-R67W	<b>TVD Reference:</b>	WELL @ 4854.0ft (Ensign Rig #152 - RKB - 23')
<b>Site:</b>	Spaur 4N67W10LQ Pad Sec.10-T4N-R67W	<b>MD Reference:</b>	WELL @ 4854.0ft (Ensign Rig #152 - RKB - 23')
<b>Well:</b>	Spaur 10Y-241	<b>North Reference:</b>	True
<b>Wellbore:</b>	Wellbore #1	<b>Survey Calculation Method:</b>	Minimum Curvature
<b>Design:</b>	Wellbore #1	<b>Database:</b>	US_EDM

<b>Project</b>	SEC.10-T4N-R67W, Weld County, Colorado		
<b>Map System:</b>	US State Plane 1983	<b>System Datum:</b>	Mean Sea Level
<b>Geo Datum:</b>	North American Datum 1983		
<b>Map Zone:</b>	Colorado Northern Zone		Using geodetic scale factor

<b>Site</b>	Spaur 4N67W10LQ Pad Sec.10-T4N-R67W				
<b>Site Position:</b>		<b>Northing:</b>	1,360,218.33 usft	<b>Latitude:</b>	40.320530
<b>From:</b>	Lat/Long	<b>Easting:</b>	3,173,449.03 usft	<b>Longitude:</b>	-104.877950
<b>Position Uncertainty:</b>	0.0 ft	<b>Slot Radius:</b>	13-3/16 "	<b>Grid Convergence:</b>	0.40 °

<b>Well</b>	Spaur 10Y-241					
<b>Well Position</b>	<b>+N/-S</b>	0.0 ft	<b>Northing:</b>	1,360,127.24 usft	<b>Latitude:</b>	40.320280
	<b>+E/-W</b>	0.0 ft	<b>Easting:</b>	3,173,449.67 usft	<b>Longitude:</b>	-104.877950
<b>Position Uncertainty</b>		0.0 ft	<b>Wellhead Elevation:</b>	ft	<b>Ground Level:</b>	4,831.0 ft

<b>Wellbore</b>	Wellbore #1				
<b>Magnetics</b>	<b>Model Name</b>	<b>Sample Date</b>	<b>Declination (°)</b>	<b>Dip Angle (°)</b>	<b>Field Strength (nT)</b>
	IGRF2010	1/21/2016	8.30	66.81	52,593

<b>Design</b>	Wellbore #1				
<b>Audit Notes:</b>					
<b>Version:</b>	1.0	<b>Phase:</b>	ACTUAL	<b>Tie On Depth:</b>	0.0
<b>Vertical Section:</b>	<b>Depth From (TVD) (ft)</b>	<b>+N/-S (ft)</b>	<b>+E/-W (ft)</b>	<b>Direction (°)</b>	
	0.0	0.0	0.0	29.73	

<b>Survey Program</b>	<b>Date</b>	2/18/2016			
<b>From (ft)</b>	<b>To (ft)</b>	<b>Survey (Wellbore)</b>	<b>Tool Name</b>	<b>Description</b>	
102.0	11,951.0	Survey #1 (Wellbore #1)	MWD	MWD - Standard	

<b>Survey</b>										
<b>Measured Depth (ft)</b>	<b>Inclination (°)</b>	<b>Azimuth (°)</b>	<b>Vertical Depth (ft)</b>	<b>+N/-S (ft)</b>	<b>+E/-W (ft)</b>	<b>Vertical Section (ft)</b>	<b>Dogleg Rate (°/100usft)</b>	<b>Build Rate (°/100usft)</b>	<b>Turn Rate (°/100usft)</b>	
0.0	0.00	0.00	0.0	0.0	0.0	0.0	0.00	0.00	0.00	
102.0	0.30	174.40	102.0	-0.3	0.0	-0.2	0.29	0.29	0.00	
166.0	0.40	163.70	166.0	-0.6	0.1	-0.5	0.19	0.16	-16.72	
262.0	1.20	99.40	262.0	-1.1	1.2	-0.4	1.13	0.83	-66.98	
357.0	3.40	87.20	356.9	-1.2	5.0	1.5	2.36	2.32	-12.84	
453.0	5.00	81.10	452.6	-0.4	12.0	5.6	1.73	1.67	-6.35	
549.0	6.40	85.80	548.2	0.7	21.4	11.2	1.54	1.46	4.90	
645.0	6.90	93.70	643.5	0.7	32.5	16.7	1.08	0.52	8.23	
741.0	6.80	92.70	738.8	0.0	44.0	21.8	0.16	-0.10	-1.04	
836.0	8.20	99.00	833.0	-1.3	56.3	26.8	1.71	1.47	6.63	

<b>Company:</b>	PETROLEUM DEVELOPMENT CORP DJ Basin	<b>Local Co-ordinate Reference:</b>	Well Spaur 10Y-241
<b>Project:</b>	SEC.10-T4N-R67W	<b>TVD Reference:</b>	WELL @ 4854.0ft (Ensign Rig #152 - RKB - 23')
<b>Site:</b>	Spaur 4N67W10LQ Pad Sec.10-T4N-R67W	<b>MD Reference:</b>	WELL @ 4854.0ft (Ensign Rig #152 - RKB - 23')
<b>Well:</b>	Spaur 10Y-241	<b>North Reference:</b>	True
<b>Wellbore:</b>	Wellbore #1	<b>Survey Calculation Method:</b>	Minimum Curvature
<b>Design:</b>	Wellbore #1	<b>Database:</b>	US_EDM

Survey										
Measured Depth (ft)	Inclination (°)	Azimuth (°)	Vertical Depth (ft)	+N/-S (ft)	+E/-W (ft)	Vertical Section (ft)	Dogleg Rate (°/100usft)	Build Rate (°/100usft)	Turn Rate (°/100usft)	
932.0	9.60	98.50	927.9	-3.5	70.9	32.1	1.46	1.46	-0.52	
1,028.0	10.80	97.10	1,022.4	-5.8	87.8	38.5	1.28	1.25	-1.46	
1,124.0	11.70	99.70	1,116.5	-8.6	106.3	45.3	1.08	0.94	2.71	
1,219.0	12.80	101.50	1,209.3	-12.3	126.1	51.9	1.23	1.16	1.89	
1,283.0	12.80	103.90	1,271.8	-15.4	139.9	56.0	0.83	0.00	3.75	
1,412.0	12.00	103.40	1,397.7	-22.0	166.9	63.7	0.63	-0.62	-0.39	
1,508.0	11.80	110.10	1,491.7	-27.6	185.8	68.1	1.45	-0.21	6.98	
1,604.0	11.00	122.70	1,585.8	-36.0	202.7	69.3	2.72	-0.83	13.13	
1,700.0	9.00	100.80	1,680.4	-42.3	217.8	71.2	4.44	-2.08	-22.81	
1,795.0	12.00	102.00	1,773.8	-45.8	234.8	76.7	3.17	3.16	1.26	
1,891.0	8.50	115.40	1,868.2	-50.9	250.9	80.2	4.39	-3.65	13.96	
1,987.0	13.00	112.00	1,962.5	-58.0	267.4	82.2	4.73	4.69	-3.54	
2,082.0	16.40	106.20	2,054.4	-65.7	290.2	86.8	3.90	3.58	-6.11	
2,179.0	17.90	103.70	2,147.1	-73.1	317.8	94.1	1.72	1.55	-2.58	
2,275.0	20.90	102.30	2,237.6	-80.2	348.9	103.3	3.16	3.13	-1.46	
2,370.0	23.00	97.20	2,325.8	-86.2	383.9	115.5	2.98	2.21	-5.37	
2,465.0	25.90	93.60	2,412.2	-89.8	423.0	131.8	3.43	3.05	-3.79	
2,561.0	29.90	95.70	2,497.1	-93.5	467.7	150.7	4.29	4.17	2.19	
2,657.0	29.60	94.60	2,580.4	-97.8	515.2	170.6	0.65	-0.31	-1.15	
2,752.0	29.50	93.20	2,663.0	-101.0	561.9	191.0	0.73	-0.11	-1.47	
2,848.0	27.70	91.30	2,747.3	-102.8	607.8	212.1	2.10	-1.88	-1.98	
2,944.0	27.70	92.30	2,832.3	-104.2	652.4	233.0	0.48	0.00	1.04	
3,040.0	28.80	92.30	2,916.9	-106.0	697.8	254.0	1.15	1.15	0.00	
3,136.0	26.20	90.20	3,002.0	-107.0	742.1	275.1	2.89	-2.71	-2.19	
3,231.0	25.10	94.40	3,087.7	-108.6	783.2	294.0	2.24	-1.16	4.42	
3,328.0	24.00	98.30	3,175.9	-113.1	823.2	310.0	2.02	-1.13	4.02	
3,424.0	24.40	100.20	3,263.5	-119.4	862.1	323.8	0.91	0.42	1.98	
3,520.0	23.80	97.60	3,351.1	-125.5	900.8	337.7	1.27	-0.63	-2.71	
3,615.0	20.80	99.90	3,439.0	-130.9	936.4	350.7	3.29	-3.16	2.42	
3,711.0	25.60	99.00	3,527.2	-137.1	973.7	363.8	5.01	5.00	-0.94	
3,808.0	23.90	95.80	3,615.3	-142.3	1,014.0	379.2	2.23	-1.75	-3.30	
3,904.0	26.50	97.20	3,702.2	-147.0	1,054.6	395.3	2.78	2.71	1.46	
4,000.0	27.80	97.10	3,787.6	-152.4	1,098.0	412.1	1.36	1.35	-0.10	
4,096.0	27.90	95.80	3,872.5	-157.5	1,142.6	429.8	0.64	0.10	-1.35	
4,192.0	26.80	94.10	3,957.7	-161.3	1,186.5	448.3	1.41	-1.15	-1.77	
4,288.0	26.20	91.10	4,043.7	-163.2	1,229.3	467.8	1.53	-0.63	-3.13	
4,384.0	25.70	91.60	4,130.0	-164.2	1,271.3	487.8	0.57	-0.52	0.52	
4,479.0	26.10	90.70	4,215.4	-165.1	1,312.8	507.6	0.59	0.42	-0.95	
4,576.0	25.90	92.30	4,302.6	-166.2	1,355.3	527.7	0.75	-0.21	1.65	
4,671.0	24.40	95.30	4,388.6	-168.8	1,395.6	545.4	2.07	-1.58	3.16	
4,767.0	24.30	94.10	4,476.1	-172.1	1,435.0	562.1	0.53	-0.10	-1.25	
4,863.0	24.40	96.70	4,563.5	-175.8	1,474.4	578.4	1.12	0.10	2.71	
4,959.0	25.80	97.10	4,650.5	-180.7	1,514.8	594.2	1.47	1.46	0.42	
5,055.0	28.20	95.80	4,736.0	-185.6	1,558.1	611.5	2.57	2.50	-1.35	

<b>Company:</b>	PETROLEUM DEVELOPMENT CORP DJ Basin	<b>Local Co-ordinate Reference:</b>	Well Spaur 10Y-241
<b>Project:</b>	SEC.10-T4N-R67W	<b>TVD Reference:</b>	WELL @ 4854.0ft (Ensign Rig #152 - RKB - 23')
<b>Site:</b>	Spaur 4N67W10LQ Pad Sec.10-T4N-R67W	<b>MD Reference:</b>	WELL @ 4854.0ft (Ensign Rig #152 - RKB - 23')
<b>Well:</b>	Spaur 10Y-241	<b>North Reference:</b>	True
<b>Wellbore:</b>	Wellbore #1	<b>Survey Calculation Method:</b>	Minimum Curvature
<b>Design:</b>	Wellbore #1	<b>Database:</b>	US_EDM

Survey										
Measured Depth (ft)	Inclination (°)	Azimuth (°)	Vertical Depth (ft)	+N/-S (ft)	+E/-W (ft)	Vertical Section (ft)	Dogleg Rate (°/100usft)	Build Rate (°/100usft)	Turn Rate (°/100usft)	
5,180.0	25.10	93.70	4,847.7	-190.3	1,614.0	635.1	2.59	-2.48	-1.68	
5,276.0	24.20	89.90	4,935.0	-191.5	1,654.0	653.8	1.90	-0.94	-3.96	
5,371.0	23.00	93.40	5,022.0	-192.6	1,692.0	671.7	1.94	-1.26	3.68	
5,467.0	24.00	94.40	5,110.1	-195.2	1,730.2	688.4	1.12	1.04	1.04	
5,563.0	24.70	92.90	5,197.5	-197.7	1,769.7	705.8	0.97	0.73	-1.56	
5,659.0	23.30	94.30	5,285.2	-200.2	1,808.7	723.0	1.57	-1.46	1.46	
5,754.0	21.00	99.40	5,373.2	-204.4	1,844.2	737.0	3.15	-2.42	5.37	
5,850.0	22.10	97.60	5,462.5	-209.6	1,879.1	749.8	1.34	1.15	-1.88	
5,946.0	22.50	92.70	5,551.3	-212.8	1,915.3	764.9	1.98	0.42	-5.10	
6,041.0	23.00	87.80	5,638.9	-212.9	1,952.0	783.0	2.06	0.53	-5.16	
6,137.0	23.60	88.50	5,727.1	-211.7	1,990.0	802.9	0.69	0.63	0.73	
6,233.0	24.40	90.70	5,814.8	-211.5	2,029.0	822.5	1.25	0.83	2.29	
6,329.0	24.50	96.50	5,902.2	-214.0	2,068.6	839.9	2.50	0.10	6.04	
6,425.0	26.00	98.80	5,989.0	-219.4	2,109.2	855.3	1.87	1.56	2.40	
6,520.0	24.50	99.40	6,075.0	-225.8	2,149.2	869.6	1.60	-1.58	0.63	
6,616.0	22.60	97.90	6,163.0	-231.6	2,187.1	883.4	2.08	-1.98	-1.56	
6,711.0	23.00	95.00	6,250.5	-235.8	2,223.7	897.9	1.26	0.42	-3.05	
6,806.0	24.40	79.10	6,337.6	-233.7	2,261.5	918.5	6.87	1.47	-16.74	
6,902.0	24.70	63.30	6,425.0	-220.9	2,298.9	948.1	6.83	0.31	-16.46	
6,997.0	25.30	50.10	6,511.2	-198.9	2,332.3	983.7	5.90	0.63	-13.89	
7,093.0	27.90	38.70	6,597.1	-168.2	2,362.1	1,025.2	5.96	2.71	-11.88	
7,189.0	34.10	29.20	6,679.4	-127.1	2,389.3	1,074.3	8.21	6.46	-9.90	
7,285.0	39.00	24.50	6,756.5	-76.1	2,415.0	1,131.4	5.88	5.10	-4.90	
7,381.0	47.60	18.70	6,826.3	-14.9	2,438.9	1,196.4	9.86	8.96	-6.04	
7,476.0	57.20	14.30	6,884.2	57.2	2,460.1	1,269.5	10.75	10.11	-4.63	
7,572.0	64.00	13.20	6,931.3	138.4	2,479.9	1,349.9	7.15	7.08	-1.15	
7,590.4	64.82	12.83	6,939.3	154.6	2,483.6	1,365.8	4.83	4.47	-2.03	
<b>Cross Setback - 460'FSL &amp; 379'FEL</b>										
7,668.0	68.30	11.30	6,970.2	224.2	2,498.5	1,433.6	4.83	4.48	-1.97	
7,764.0	73.50	11.50	7,001.6	313.1	2,516.4	1,519.7	5.42	5.42	0.21	
7,860.0	80.40	10.40	7,023.2	404.8	2,534.2	1,608.2	7.27	7.19	-1.15	
7,956.0	85.60	6.40	7,034.9	499.1	2,548.1	1,696.9	6.81	5.42	-4.17	
8,043.4	89.51	4.58	7,038.7	586.0	2,556.4	1,776.5	4.94	4.48	-2.08	
<b>Deepest TVD Drilled - 7038.7'</b>										
8,052.0	89.90	4.40	7,038.7	594.5	2,557.1	1,784.2	4.94	4.48	-2.08	
8,147.0	90.50	3.90	7,038.4	689.3	2,564.0	1,869.9	0.82	0.63	-0.53	
8,243.0	90.80	2.90	7,037.3	785.1	2,569.7	1,956.0	1.09	0.31	-1.04	
8,339.0	91.50	3.00	7,035.3	880.9	2,574.6	2,041.7	0.74	0.73	0.10	
8,435.0	90.60	3.00	7,033.6	976.8	2,579.6	2,127.4	0.94	-0.94	0.00	
8,531.0	89.80	0.20	7,033.3	1,072.8	2,582.3	2,212.0	3.03	-0.83	-2.92	
8,627.0	90.30	0.00	7,033.2	1,168.8	2,582.5	2,295.5	0.56	0.52	-0.21	
8,722.0	90.90	359.50	7,032.2	1,263.7	2,582.1	2,377.8	0.82	0.63	-0.53	
8,818.0	91.50	358.60	7,030.2	1,359.7	2,580.5	2,460.3	1.13	0.63	-0.94	

<b>Company:</b>	PETROLEUM DEVELOPMENT CORP DJ Basin	<b>Local Co-ordinate Reference:</b>	Well Spaur 10Y-241
<b>Project:</b>	SEC.10-T4N-R67W	<b>TVD Reference:</b>	WELL @ 4854.0ft (Ensign Rig #152 - RKB - 23')
<b>Site:</b>	Spaur 4N67W10LQ Pad Sec.10-T4N-R67W	<b>MD Reference:</b>	WELL @ 4854.0ft (Ensign Rig #152 - RKB - 23')
<b>Well:</b>	Spaur 10Y-241	<b>North Reference:</b>	True
<b>Wellbore:</b>	Wellbore #1	<b>Survey Calculation Method:</b>	Minimum Curvature
<b>Design:</b>	Wellbore #1	<b>Database:</b>	US_EDM

Survey										
Measured Depth (ft)	Inclination (°)	Azimuth (°)	Vertical Depth (ft)	+N/-S (ft)	+E/-W (ft)	Vertical Section (ft)	Dogleg Rate (°/100usft)	Build Rate (°/100usft)	Turn Rate (°/100usft)	
8,914.0	90.20	359.30	7,028.7	1,455.7	2,578.7	2,542.8	1.54	-1.35	0.73	
9,010.0	91.30	359.00	7,027.5	1,551.7	2,577.3	2,625.4	1.19	1.15	-0.31	
9,105.0	90.10	359.70	7,026.3	1,646.6	2,576.2	2,707.4	1.46	-1.26	0.74	
9,201.0	90.10	358.60	7,026.2	1,742.6	2,574.8	2,790.0	1.15	0.00	-1.15	
9,297.0	90.80	357.90	7,025.4	1,838.6	2,571.9	2,871.9	1.03	0.73	-0.73	
9,393.0	92.20	357.80	7,022.9	1,934.5	2,568.3	2,953.4	1.46	1.46	-0.10	
9,489.0	91.00	359.50	7,020.2	2,030.4	2,566.0	3,035.6	2.17	-1.25	1.77	
9,584.0	90.20	359.70	7,019.2	2,125.4	2,565.3	3,117.7	0.87	-0.84	0.21	
9,679.0	90.60	359.00	7,018.5	2,220.4	2,564.2	3,199.7	0.85	0.42	-0.74	
9,775.0	90.10	0.00	7,018.0	2,316.4	2,563.4	3,282.6	1.16	-0.52	1.04	
9,871.0	90.70	359.70	7,017.3	2,412.4	2,563.2	3,365.9	0.70	0.63	-0.31	
9,967.0	91.60	359.00	7,015.4	2,508.4	2,562.1	3,448.7	1.19	0.94	-0.73	
10,063.0	90.20	0.20	7,013.9	2,604.3	2,561.4	3,531.7	1.92	-1.46	1.25	
10,159.0	91.50	359.50	7,012.4	2,700.3	2,561.2	3,614.9	1.54	1.35	-0.73	
10,255.0	89.70	0.60	7,011.4	2,796.3	2,561.2	3,698.3	2.20	-1.88	1.15	
10,351.0	90.50	0.60	7,011.3	2,892.3	2,562.2	3,782.2	0.83	0.83	0.00	
10,447.0	90.00	1.80	7,010.8	2,988.3	2,564.2	3,866.5	1.35	-0.52	1.25	
10,543.0	90.80	1.40	7,010.2	3,084.2	2,566.9	3,951.2	0.93	0.83	-0.42	
10,639.0	88.30	1.60	7,010.9	3,180.2	2,569.4	4,035.8	2.61	-2.60	0.21	
10,734.0	88.60	1.40	7,013.5	3,275.1	2,571.9	4,119.4	0.38	0.32	-0.21	
10,830.0	88.50	0.90	7,015.9	3,371.1	2,573.9	4,203.7	0.53	-0.10	-0.52	
10,926.0	89.40	359.70	7,017.7	3,467.1	2,574.4	4,287.3	1.56	0.94	-1.25	
11,022.0	90.20	359.20	7,018.0	3,563.1	2,573.4	4,370.2	0.98	0.83	-0.52	
11,118.0	91.20	359.00	7,016.8	3,659.0	2,571.9	4,452.8	1.06	1.04	-0.21	
11,213.0	90.50	359.70	7,015.4	3,754.0	2,570.9	4,534.8	1.04	-0.74	0.74	
11,309.0	90.70	358.80	7,014.4	3,850.0	2,569.6	4,617.5	0.96	0.21	-0.94	
11,405.0	91.40	358.10	7,012.7	3,946.0	2,567.0	4,699.5	1.03	0.73	-0.73	
11,501.0	89.70	359.20	7,011.8	4,041.9	2,564.7	4,781.8	2.11	-1.77	1.15	
11,597.0	90.30	359.20	7,011.8	4,137.9	2,563.4	4,864.5	0.63	0.63	0.00	
11,693.0	91.30	359.00	7,010.4	4,233.9	2,561.9	4,947.1	1.06	1.04	-0.21	
11,788.0	90.90	359.30	7,008.6	4,328.9	2,560.5	5,028.8	0.53	-0.42	0.32	
11,884.0	91.60	358.80	7,006.5	4,424.8	2,558.9	5,111.4	0.90	0.73	-0.52	
11,901.0	91.80	358.80	7,006.0	4,441.8	2,558.5	5,125.9	1.18	1.18	0.00	
11,951.0	91.80	358.80	7,004.4	4,491.8	2,557.5	5,168.8	0.00	0.00	0.00	

Design Targets										
Target Name	Dip Angle (°)	Dip Dir. (°)	TVD (ft)	+N/-S (ft)	+E/-W (ft)	Northing (usft)	Easting (usft)	Latitude	Longitude	
SHL 254'FSL & 2393'FV - hit/miss target - Shape - survey hits target center - Point	0.00	0.00	1.0	0.0	0.0	1,360,127.26	3,173,449.67	40.320280	-104.877950	

<b>Company:</b>	PETROLEUM DEVELOPMENT CORP DJ Basin	<b>Local Co-ordinate Reference:</b>	Well Spaur 10Y-241
<b>Project:</b>	SEC.10-T4N-R67W	<b>TVD Reference:</b>	WELL @ 4854.0ft (Ensign Rig #152 - RKB - 23')
<b>Site:</b>	Spaur 4N67W10LQ Pad Sec.10-T4N-R67W	<b>MD Reference:</b>	WELL @ 4854.0ft (Ensign Rig #152 - RKB - 23')
<b>Well:</b>	Spaur 10Y-241	<b>North Reference:</b>	True
<b>Wellbore:</b>	Wellbore #1	<b>Survey Calculation Method:</b>	Minimum Curvature
<b>Design:</b>	Wellbore #1	<b>Database:</b>	US_EDM

Survey Annotations				
Measured Depth (ft)	Vertical Depth (ft)	Local Coordinates		Comment
		+N/-S (ft)	+E/-W (ft)	
7,590.4	6,939.3	154.6	2,483.6	Cross Setback - 460'FSL & 379'FEL
8,043.4	7,038.7	586.0	2,556.4	Deepest TVD Drilled - 7038.7'

Checked By: \_\_\_\_\_ Approved By: \_\_\_\_\_ Date: \_\_\_\_\_