

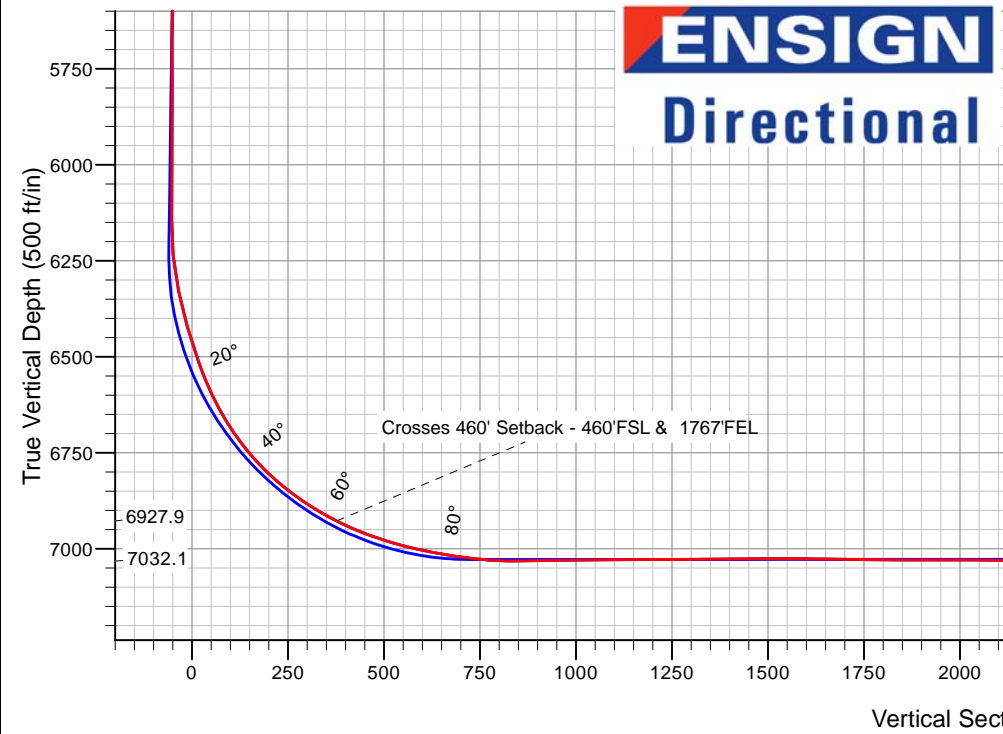
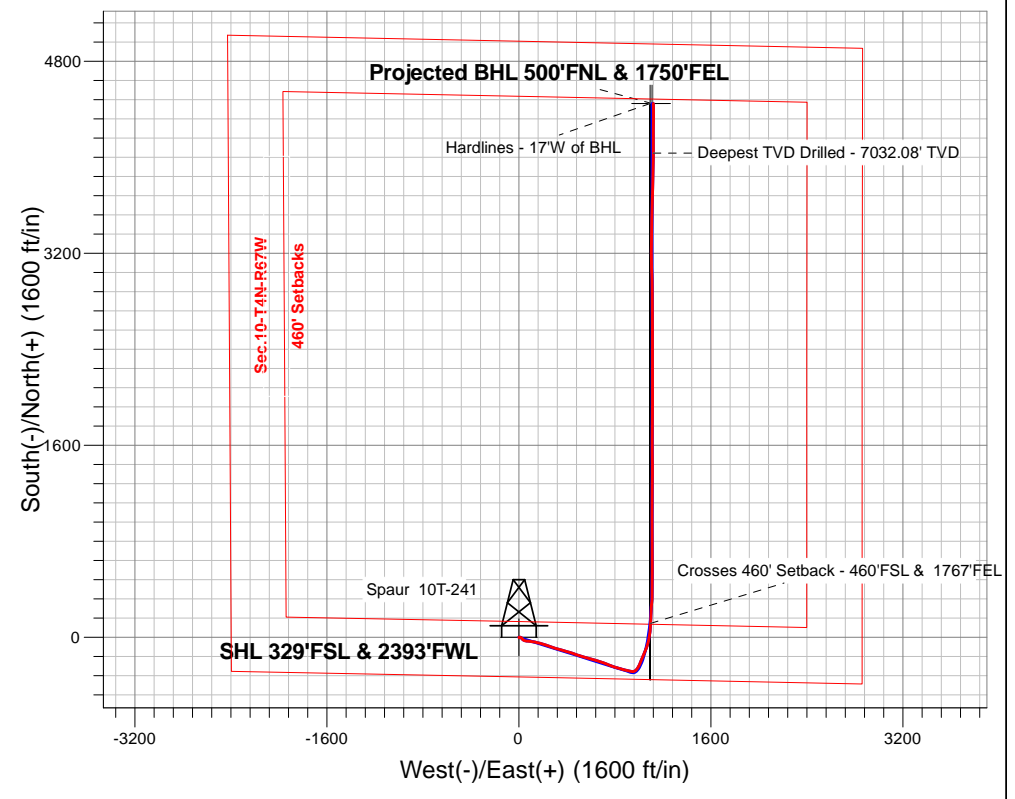
# PETROLEUM DEVELOPMENT CORP DJ Basin

Well Name: **Spaur 10T-241**

Surface Location: Spaur 4N67W10LQ Pad Sec.10-T4N-R67W  
 North American Datum 1983 , US State Plane 1983, Colorado Northern Zone  
 Ground Elevation: 4830.0  
 +N/-S+E/-W Northing Easting Latitude Longitude Slot  
 0.0 0.0 1360200.093173449.16 40.320480 -104.877950  
 Ensign Rig #152 - RKB -23' WELL @ 4853.0ft (Ensign Rig #152 - RKB -23')

## FINAL SURVEY

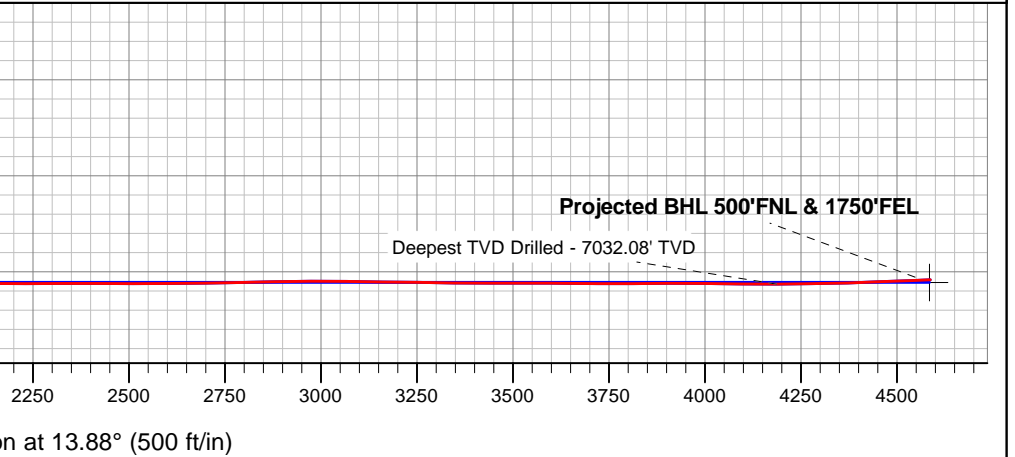
**Projected Bottom Hole Location**  
**11545'MD 7021'TVD 4448'N & 1121'E of SHL**  
**92.2 degree Incl @ 359.8 degree AZM**



Spaur 4N67W10LQ Pad Sec.10-T4N-R67W  
 Spaur 10T-241  
 Wellbore #1  
 8:35, March 28 2016

ANNOTATIONS		
TVD	MD	Annotation
6927.9	7198.1	Crosses 460' Setback - 460'FSL & 1767'FEL
7032.1	11133.0	Deepest TVD Drilled - 7032.08' TVD

LEGEND	
	Spaur 10T-241, Wellbore #1, Plan #4 (3-17-16) V0
	Wellbore #1
	Survey #1





# **PETROLEUM DEVELOPMENT CORP DJ Basin**

**SEC.10-T4N-R67W**

**Spaur 4N67W10LQ Pad Sec.10-T4N-R67W**

**Spaur 10T-241**

**Wellbore #1**

**Survey: Survey #1**

## **Standard Survey Report**

**28 March, 2016**



<b>Company:</b>	PETROLEUM DEVELOPMENT CORP DJ Basin	<b>Local Co-ordinate Reference:</b>	Well Spaur 10T-241
<b>Project:</b>	SEC.10-T4N-R67W	<b>TVD Reference:</b>	WELL @ 4853.0ft (Ensign Rig #152 - RKB -23')
<b>Site:</b>	Spaur 4N67W10LQ Pad Sec.10-T4N-R67W	<b>MD Reference:</b>	WELL @ 4853.0ft (Ensign Rig #152 - RKB -23')
<b>Well:</b>	Spaur 10T-241	<b>North Reference:</b>	True
<b>Wellbore:</b>	Wellbore #1	<b>Survey Calculation Method:</b>	Minimum Curvature
<b>Design:</b>	Wellbore #1	<b>Database:</b>	US_EDM

<b>Project</b>	SEC.10-T4N-R67W, Weld County, Colorado		
<b>Map System:</b>	US State Plane 1983	<b>System Datum:</b>	Mean Sea Level
<b>Geo Datum:</b>	North American Datum 1983		
<b>Map Zone:</b>	Colorado Northern Zone		Using geodetic scale factor

<b>Site</b>	Spaur 4N67W10LQ Pad Sec.10-T4N-R67W				
<b>Site Position:</b>		<b>Northing:</b>	1,360,218.33 usft	<b>Latitude:</b>	40.320530
<b>From:</b>	Lat/Long	<b>Easting:</b>	3,173,449.03 usft	<b>Longitude:</b>	-104.877950
<b>Position Uncertainty:</b>	0.0 ft	<b>Slot Radius:</b>	13-3/16 "	<b>Grid Convergence:</b>	0.40 °

<b>Well</b>	Spaur 10T-241					
<b>Well Position</b>	<b>+N/-S</b>	0.0 ft	<b>Northing:</b>	1,360,200.09 usft	<b>Latitude:</b>	40.320480
	<b>+E/-W</b>	0.0 ft	<b>Easting:</b>	3,173,449.16 usft	<b>Longitude:</b>	-104.877950
<b>Position Uncertainty</b>		0.0 ft	<b>Wellhead Elevation:</b>	ft	<b>Ground Level:</b>	4,830.0 ft

<b>Wellbore</b>	Wellbore #1				
<b>Magnetics</b>	<b>Model Name</b>	<b>Sample Date</b>	<b>Declination (°)</b>	<b>Dip Angle (°)</b>	<b>Field Strength (nT)</b>
	IGRF2010	3/17/2016	8.28	66.80	52,577

<b>Design</b>	Wellbore #1				
<b>Audit Notes:</b>					
<b>Version:</b>	1.0	<b>Phase:</b>	ACTUAL	<b>Tie On Depth:</b>	0.0
<b>Vertical Section:</b>	<b>Depth From (TVD) (ft)</b>	<b>+N/-S (ft)</b>	<b>+E/-W (ft)</b>	<b>Direction (°)</b>	
	0.0	0.0	0.0	13.88	

<b>Survey Program</b>	<b>Date</b>	3/28/2016			
<b>From (ft)</b>	<b>To (ft)</b>	<b>Survey (Wellbore)</b>	<b>Tool Name</b>	<b>Description</b>	
104.0	11,545.0	Survey #1 (Wellbore #1)	MWD	MWD - Standard	

<b>Survey</b>										
<b>Measured Depth (ft)</b>	<b>Inclination (°)</b>	<b>Azimuth (°)</b>	<b>Vertical Depth (ft)</b>	<b>+N/-S (ft)</b>	<b>+E/-W (ft)</b>	<b>Vertical Section (ft)</b>	<b>Dogleg Rate (°/100usft)</b>	<b>Build Rate (°/100usft)</b>	<b>Turn Rate (°/100usft)</b>	
0.0	0.00	0.00	0.0	0.0	0.0	0.0	0.00	0.00	0.00	
1.0	0.00	95.00	1.0	0.0	0.0	0.0	0.38	0.38	0.00	
<b>SHL 329'FSL &amp; 2393'FWL</b>										
3.4	0.01	95.00	3.4	0.0	0.0	0.0	0.38	0.38	0.00	
<b>Hardlines - 17'W of BHL</b>										
104.0	0.40	95.00	104.0	0.0	0.4	0.1	0.38	0.38	0.00	
168.0	0.20	102.30	168.0	-0.1	0.7	0.1	0.32	-0.31	11.41	
264.0	0.50	105.90	264.0	-0.2	1.3	0.1	0.31	0.31	3.75	
359.0	0.50	124.10	359.0	-0.6	2.0	-0.1	0.17	0.00	19.16	
455.0	0.50	111.00	455.0	-1.0	2.7	-0.3	0.12	0.00	-13.65	

<b>Company:</b>	PETROLEUM DEVELOPMENT CORP DJ Basin	<b>Local Co-ordinate Reference:</b>	Well Spaur 10T-241
<b>Project:</b>	SEC.10-T4N-R67W	<b>TVD Reference:</b>	WELL @ 4853.0ft (Ensign Rig #152 - RKB -23')
<b>Site:</b>	Spaur 4N67W10LQ Pad Sec.10-T4N-R67W	<b>MD Reference:</b>	WELL @ 4853.0ft (Ensign Rig #152 - RKB -23')
<b>Well:</b>	Spaur 10T-241	<b>North Reference:</b>	True
<b>Wellbore:</b>	Wellbore #1	<b>Survey Calculation Method:</b>	Minimum Curvature
<b>Design:</b>	Wellbore #1	<b>Database:</b>	US_EDM

Survey										
Measured Depth (ft)	Inclination (°)	Azimuth (°)	Vertical Depth (ft)	+N/-S (ft)	+E/-W (ft)	Vertical Section (ft)	Dogleg Rate (°/100usft)	Build Rate (°/100usft)	Turn Rate (°/100usft)	
551.0	0.60	113.40	551.0	-1.3	3.6	-0.4	0.11	0.10	2.50	
647.0	0.50	110.10	647.0	-1.6	4.4	-0.5	0.11	-0.10	-3.44	
743.0	0.40	125.50	743.0	-2.0	5.1	-0.7	0.16	-0.10	16.04	
839.0	0.40	134.00	839.0	-2.4	5.6	-1.0	0.06	0.00	8.85	
934.0	0.70	38.70	934.0	-2.2	6.2	-0.6	0.88	0.32	-100.32	
1,030.0	1.10	22.00	1,030.0	-0.9	6.9	0.8	0.49	0.42	-17.40	
1,126.0	1.50	50.00	1,126.0	0.8	8.2	2.7	0.77	0.42	29.17	
1,221.0	0.90	59.60	1,221.0	2.0	9.8	4.3	0.66	-0.63	10.11	
1,289.0	0.20	163.90	1,289.0	2.1	10.3	4.5	1.42	-1.03	153.38	
1,413.0	0.30	231.90	1,413.0	1.7	10.1	4.1	0.24	0.08	54.84	
1,508.0	2.00	129.20	1,508.0	0.5	11.2	3.2	2.20	1.79	-108.11	
1,604.0	4.10	109.00	1,604.0	-1.7	15.8	2.2	2.42	2.19	-21.04	
1,700.0	4.30	130.40	1,700.0	-5.1	21.8	0.2	1.64	0.21	22.29	
1,796.0	4.20	161.00	1,796.0	-10.8	25.6	-4.3	2.34	-0.10	31.88	
1,891.0	6.40	135.40	1,891.0	-17.8	30.5	-10.0	3.35	2.32	-26.95	
1,987.0	7.90	117.80	1,987.0	-24.7	40.1	-14.4	2.75	1.56	-18.33	
2,083.0	8.00	103.90	2,083.0	-29.4	52.4	-16.0	2.00	0.10	-14.48	
2,179.0	9.10	93.70	2,179.0	-31.5	66.5	-14.6	1.95	1.15	-10.63	
2,276.0	11.70	96.20	2,276.0	-33.1	83.9	-12.0	2.72	2.68	2.58	
2,370.0	12.90	97.40	2,370.0	-35.4	103.8	-9.5	1.31	1.28	1.28	
2,466.0	13.70	98.10	2,466.0	-38.4	125.7	-7.2	0.85	0.83	0.73	
2,562.0	13.90	104.60	2,562.0	-42.9	148.1	-6.2	1.63	0.21	6.77	
2,657.0	14.20	105.30	2,657.0	-48.9	170.4	-6.6	0.36	0.32	0.74	
2,753.0	13.70	103.40	2,753.0	-54.6	192.8	-6.8	0.71	-0.52	-1.98	
2,849.0	13.50	109.70	2,849.0	-61.0	214.4	-7.8	1.56	-0.21	6.56	
2,945.0	13.10	108.10	2,945.0	-68.2	235.3	-9.8	0.57	-0.42	-1.67	
3,041.0	12.20	106.70	3,041.0	-74.5	255.3	-11.1	0.99	-0.94	-1.46	
3,136.0	12.40	110.40	3,136.0	-80.9	274.5	-12.7	0.86	0.21	3.89	
3,232.0	11.30	110.20	3,232.0	-87.8	293.0	-14.9	1.15	-1.15	-0.21	
3,328.0	12.00	106.50	3,328.0	-93.9	311.4	-16.4	1.07	0.73	-3.85	
3,424.0	12.60	103.70	3,424.0	-99.2	331.1	-16.8	0.88	0.63	-2.92	
3,520.0	14.00	107.40	3,520.0	-105.1	352.4	-17.5	1.71	1.46	3.85	
3,616.0	13.50	106.50	3,616.0	-111.8	374.2	-18.7	0.57	-0.52	-0.94	
3,712.0	13.10	107.10	3,712.0	-118.2	395.4	-19.9	0.44	-0.42	0.63	
3,853.0	12.70	104.40	3,853.0	-126.7	425.7	-20.9	0.51	-0.28	-1.91	
4,044.0	14.30	109.20	4,044.0	-139.7	468.3	-23.3	1.02	0.84	2.51	
4,237.0	12.10	108.70	4,237.0	-154.0	509.9	-27.2	1.14	-1.14	-0.26	
4,428.0	12.90	107.80	4,428.0	-167.0	549.2	-30.3	0.43	0.42	-0.47	
4,620.0	11.30	106.50	4,620.0	-178.8	587.7	-32.7	0.85	-0.83	-0.68	
4,811.0	12.90	101.80	4,811.0	-188.5	626.5	-32.7	0.98	0.84	-2.46	
4,907.0	12.90	105.10	4,907.0	-193.5	647.3	-32.6	0.77	0.00	3.44	
5,003.0	12.40	105.00	5,003.0	-199.0	667.6	-33.0	0.52	-0.52	-0.10	
5,099.0	12.10	107.80	5,099.0	-204.7	687.1	-33.9	0.69	-0.31	2.92	

<b>Company:</b>	PETROLEUM DEVELOPMENT CORP DJ Basin	<b>Local Co-ordinate Reference:</b>	Well Spaur 10T-241
<b>Project:</b>	SEC.10-T4N-R67W	<b>TVD Reference:</b>	WELL @ 4853.0ft (Ensign Rig #152 - RKB -23')
<b>Site:</b>	Spaur 4N67W10LQ Pad Sec.10-T4N-R67W	<b>MD Reference:</b>	WELL @ 4853.0ft (Ensign Rig #152 - RKB -23')
<b>Well:</b>	Spaur 10T-241	<b>North Reference:</b>	True
<b>Wellbore:</b>	Wellbore #1	<b>Survey Calculation Method:</b>	Minimum Curvature
<b>Design:</b>	Wellbore #1	<b>Database:</b>	US_EDM

Survey										
Measured Depth (ft)	Inclination (°)	Azimuth (°)	Vertical Depth (ft)	+N/-S (ft)	+E/-W (ft)	Vertical Section (ft)	Dogleg Rate (°/100usft)	Build Rate (°/100usft)	Turn Rate (°/100usft)	
5,195.0	12.80	114.80	5,116.3	-212.2	706.4	-36.6	1.73	0.73	7.29	
5,291.0	13.40	112.20	5,209.8	-220.9	726.3	-40.2	0.88	0.63	-2.71	
5,386.0	13.10	111.50	5,302.3	-229.0	746.5	-43.2	0.36	-0.32	-0.74	
5,482.0	12.60	108.80	5,395.8	-236.4	766.6	-45.6	0.81	-0.52	-2.81	
5,578.0	12.30	110.60	5,489.6	-243.3	786.1	-47.7	0.51	-0.31	1.88	
5,673.0	13.10	111.30	5,582.3	-250.8	805.6	-50.3	0.86	0.84	0.74	
5,769.0	13.50	103.40	5,675.7	-257.4	826.6	-51.6	1.94	0.42	-8.23	
5,865.0	12.80	102.30	5,769.2	-262.2	847.9	-51.2	0.77	-0.73	-1.15	
5,961.0	12.30	106.20	5,862.9	-267.4	868.1	-51.3	1.02	-0.52	4.06	
6,056.0	12.00	104.80	5,955.8	-272.7	887.4	-51.9	0.44	-0.32	-1.47	
6,152.0	13.20	104.60	6,049.4	-278.0	907.6	-52.2	1.25	1.25	-0.21	
6,248.0	13.90	105.10	6,142.8	-283.8	929.4	-52.5	0.74	0.73	0.52	
6,344.0	14.60	84.60	6,235.9	-285.6	952.6	-48.8	5.28	0.73	-21.35	
6,440.0	14.80	48.50	6,328.9	-276.4	973.8	-34.7	9.40	0.21	-37.60	
6,535.0	16.20	31.00	6,420.5	-256.9	989.8	-12.0	5.12	1.47	-18.42	
6,631.0	20.00	25.00	6,511.8	-230.6	1,003.6	16.9	4.40	3.96	-6.25	
6,726.0	25.30	22.70	6,599.4	-197.1	1,018.3	52.9	5.66	5.58	-2.42	
6,821.0	33.20	22.50	6,682.2	-154.3	1,036.1	98.8	8.32	8.32	-0.21	
6,917.0	41.10	21.50	6,758.7	-100.6	1,057.8	156.1	8.25	8.23	-1.04	
7,012.0	49.30	14.30	6,825.6	-36.5	1,078.2	223.3	10.16	8.63	-7.58	
7,108.0	57.00	6.00	6,883.2	39.0	1,091.4	299.7	10.58	8.02	-8.65	
7,198.1	63.57	2.98	6,927.9	117.0	1,097.5	376.9	7.85	7.29	-3.35	
<b>Crosses 460' Setback - 460'FSL &amp; 1767'FEL</b>										
7,204.0	64.00	2.80	6,930.5	122.3	1,097.7	382.0	7.85	7.33	-3.13	
7,300.0	71.00	3.40	6,967.2	210.8	1,102.5	469.1	7.31	7.29	0.63	
7,396.0	75.90	3.40	6,994.5	302.6	1,108.0	559.6	5.10	5.10	0.00	
7,491.0	80.60	1.40	7,013.9	395.5	1,111.9	650.7	5.36	4.95	-2.11	
7,587.0	84.00	359.00	7,026.7	490.6	1,112.2	743.1	4.32	3.54	-2.50	
7,683.0	89.70	358.60	7,032.0	586.4	1,110.2	835.6	5.95	5.94	-0.42	
7,779.0	91.50	359.30	7,031.0	682.4	1,108.4	928.4	2.01	1.88	0.73	
7,875.0	90.30	0.40	7,029.5	778.4	1,108.2	1,021.5	1.70	-1.25	1.15	
7,970.0	90.40	0.70	7,028.9	873.4	1,109.1	1,113.9	0.33	0.11	0.32	
8,067.0	90.40	0.70	7,028.2	970.4	1,110.3	1,208.4	0.00	0.00	0.00	
8,162.0	90.30	0.00	7,027.6	1,065.4	1,110.8	1,300.7	0.74	-0.11	-0.74	
8,258.0	90.50	0.20	7,027.0	1,161.4	1,111.0	1,394.0	0.29	0.21	0.21	
8,354.0	90.30	0.20	7,026.3	1,257.4	1,111.3	1,487.3	0.21	-0.21	0.00	
8,450.0	89.80	0.20	7,026.2	1,353.4	1,111.7	1,580.5	0.52	-0.52	0.00	
8,545.0	89.10	359.80	7,027.1	1,448.4	1,111.7	1,672.7	0.85	-0.74	-0.42	
8,641.0	88.90	359.30	7,028.8	1,544.3	1,110.9	1,765.7	0.56	-0.21	-0.52	
8,737.0	90.40	0.50	7,029.4	1,640.3	1,110.8	1,858.9	2.00	1.56	1.25	
8,833.0	90.00	0.50	7,029.1	1,736.3	1,111.6	1,952.3	0.42	-0.42	0.00	
8,929.0	89.50	0.40	7,029.5	1,832.3	1,112.4	2,045.7	0.53	-0.52	-0.10	
9,024.0	89.10	0.50	7,030.6	1,927.3	1,113.1	2,138.1	0.43	-0.42	0.11	
9,120.0	90.40	0.40	7,031.1	2,023.3	1,113.9	2,231.4	1.36	1.35	-0.10	

<b>Company:</b>	PETROLEUM DEVELOPMENT CORP DJ Basin	<b>Local Co-ordinate Reference:</b>	Well Spaur 10T-241
<b>Project:</b>	SEC.10-T4N-R67W	<b>TVD Reference:</b>	WELL @ 4853.0ft (Ensign Rig #152 - RKB -23')
<b>Site:</b>	Spaur 4N67W10LQ Pad Sec.10-T4N-R67W	<b>MD Reference:</b>	WELL @ 4853.0ft (Ensign Rig #152 - RKB -23')
<b>Well:</b>	Spaur 10T-241	<b>North Reference:</b>	True
<b>Wellbore:</b>	Wellbore #1	<b>Survey Calculation Method:</b>	Minimum Curvature
<b>Design:</b>	Wellbore #1	<b>Database:</b>	US_EDM

Survey										
Measured Depth (ft)	Inclination (°)	Azimuth (°)	Vertical Depth (ft)	+N/-S (ft)	+E/-W (ft)	Vertical Section (ft)	Dogleg Rate (°/100usft)	Build Rate (°/100usft)	Turn Rate (°/100usft)	
9,216.0	90.10	0.20	7,030.6	2,119.3	1,114.4	2,324.7	0.38	-0.31	-0.21	
9,312.0	89.70	359.70	7,030.8	2,215.3	1,114.3	2,417.9	0.67	-0.42	-0.52	
9,408.0	90.00	359.70	7,031.1	2,311.3	1,113.8	2,511.0	0.31	0.31	0.00	
9,504.0	90.50	359.70	7,030.6	2,407.3	1,113.3	2,604.1	0.52	0.52	0.00	
9,599.0	90.50	359.80	7,029.8	2,502.3	1,112.8	2,696.2	0.11	0.00	0.11	
9,694.0	91.50	359.70	7,028.1	2,597.3	1,112.4	2,788.3	1.06	1.05	-0.11	
9,790.0	90.60	359.80	7,026.4	2,693.3	1,112.0	2,881.4	0.94	-0.94	0.10	
9,886.0	91.10	359.70	7,025.0	2,789.3	1,111.6	2,974.5	0.53	0.52	-0.10	
9,982.0	88.80	359.10	7,025.0	2,885.2	1,110.6	3,067.4	2.48	-2.40	-0.63	
10,078.0	89.20	359.00	7,026.7	2,981.2	1,109.0	3,160.2	0.43	0.42	-0.10	
10,175.0	89.30	358.40	7,028.0	3,078.2	1,106.8	3,253.8	0.63	0.10	-0.62	
10,270.0	89.20	0.40	7,029.2	3,173.2	1,105.8	3,345.8	2.11	-0.11	2.11	
10,366.0	89.90	0.00	7,030.0	3,269.2	1,106.1	3,439.0	0.84	0.73	-0.42	
10,462.0	90.50	359.30	7,029.7	3,365.2	1,105.6	3,532.1	0.96	0.63	-0.73	
10,558.0	89.00	1.80	7,030.1	3,461.1	1,106.5	3,625.5	3.04	-1.56	2.60	
10,654.0	89.80	1.80	7,031.1	3,557.1	1,109.5	3,719.4	0.83	0.83	0.00	
10,749.0	90.10	1.60	7,031.2	3,652.0	1,112.3	3,812.2	0.38	0.32	-0.21	
10,845.0	90.80	1.40	7,030.4	3,748.0	1,114.8	3,906.0	0.76	0.73	-0.21	
10,941.0	89.00	0.90	7,030.6	3,844.0	1,116.7	3,999.6	1.95	-1.88	-0.52	
11,037.0	89.50	0.90	7,031.8	3,940.0	1,118.3	4,093.2	0.52	0.52	0.00	
11,133.0	90.20	0.70	7,032.1	4,036.0	1,119.6	4,186.7	0.76	0.73	-0.21	
<b>Deepest TVD Drilled - 7032.08' TVD</b>										
11,228.0	90.90	0.40	7,031.2	4,130.9	1,120.5	4,279.1	0.80	0.74	-0.32	
11,324.0	91.60	0.40	7,029.1	4,226.9	1,121.2	4,372.4	0.73	0.73	0.00	
11,420.0	92.20	0.00	7,025.9	4,322.9	1,121.5	4,465.7	0.75	0.63	-0.42	
11,495.0	92.20	359.80	7,023.0	4,397.8	1,121.4	4,538.4	0.27	0.00	-0.27	
11,545.0	92.20	359.80	7,021.1	4,447.8	1,121.2	4,586.9	0.00	0.00	0.00	
<b>BHL 500'FNL &amp; 1762'FEL</b>										

Design Targets										
Target Name	Dip Angle (°)	Dip Dir. (°)	TVD (ft)	+N/-S (ft)	+E/-W (ft)	Northing (usft)	Easting (usft)	Latitude	Longitude	
Hardlines - 17'W of BHL	0.00	0.00	1.0	4,448.2	1,092.6	1,364,655.66	3,174,510.48	40.332690	-104.874031	
- survey misses target center by 4580.4ft at 1.1ft MD (1.1 TVD, 0.0 N, 0.0 E)										
- Polygon										
Point 1			1.0	0.0	0.0	1,364,655.66	3,174,510.48			
Point 2			1.0	-4,800.0	0.0	1,359,855.99	3,174,544.15			
SHL 329'FSL & 2393'FW	0.00	0.00	1.0	0.0	0.0	1,360,200.12	3,173,449.16	40.320480	-104.877950	
- survey hits target center										
- Point										
BHL 500'FNL & 1762'FE	0.00	0.00	7,028.0	4,448.2	1,109.6	1,364,655.81	3,174,527.50	40.332690	-104.873970	
- survey misses target center by 13.5ft at 11545.0ft MD (7021.1 TVD, 4447.8 N, 1121.2 E)										
- Point										

<b>Company:</b>	PETROLEUM DEVELOPMENT CORP DJ Basin	<b>Local Co-ordinate Reference:</b>	Well Spaur 10T-241
<b>Project:</b>	SEC.10-T4N-R67W	<b>TVD Reference:</b>	WELL @ 4853.0ft (Ensign Rig #152 - RKB -23')
<b>Site:</b>	Spaur 4N67W10LQ Pad Sec.10-T4N-R67W	<b>MD Reference:</b>	WELL @ 4853.0ft (Ensign Rig #152 - RKB -23')
<b>Well:</b>	Spaur 10T-241	<b>North Reference:</b>	True
<b>Wellbore:</b>	Wellbore #1	<b>Survey Calculation Method:</b>	Minimum Curvature
<b>Design:</b>	Wellbore #1	<b>Database:</b>	US_EDM

Survey Annotations				
Measured Depth (ft)	Vertical Depth (ft)	Local Coordinates		Comment
		+N/-S (ft)	+E/-W (ft)	
7,198.1	6,927.9	117.0	1,097.5	Crosses 460' Setback - 460'FSL & 1767'FEL
11,133.0	7,032.1	4,036.0	1,119.6	Deepest TVD Drilled - 7032.08' TVD

Checked By: \_\_\_\_\_ Approved By: \_\_\_\_\_ Date: \_\_\_\_\_