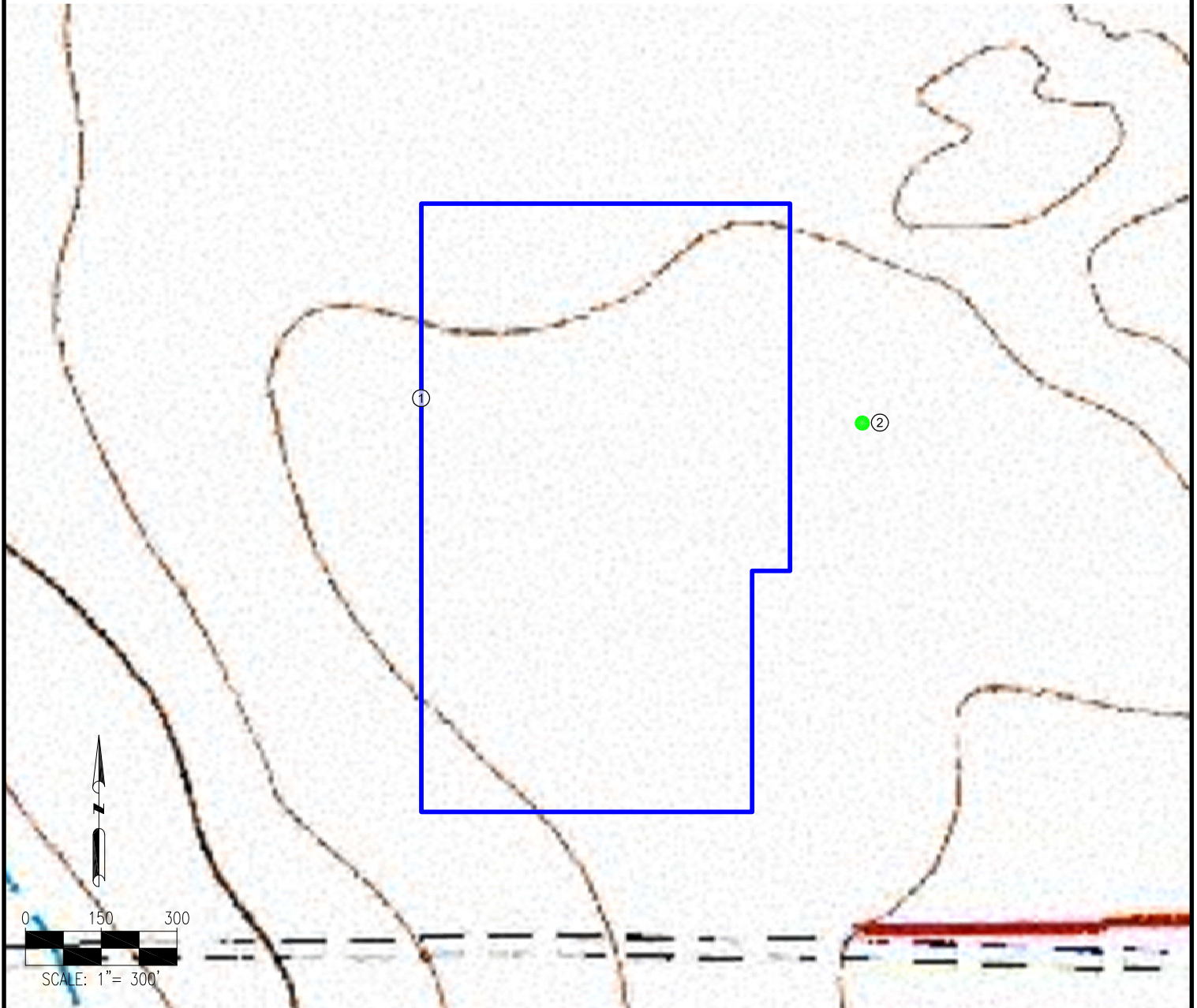


ANDERSON FACILITY 9-59-31-SESW REFERENCE AREA MAP



1. DISTURBANCE AREA
2. REFERENCE PHOTO POINT

REFERENCE LOCATION

REFERENCE PHOTO POINT
LAT: 40.702149°
LONG: -104.021702°
ELEVATION: 4877'

LEGEND:

- = REFERENCE PHOTO POINT
- = DISTURBANCE AREA

NOTES:

1. THIS ILLUSTRATION DOES NOT REPRESENT A MONUMENTED LAND SURVEY AND THEREFORE CANNOT BE RELIED UPON TO DETERMINE OWNERSHIP.
2. THIS ILLUSTRATION IS INTENDED FOR REFERENCE USE ONLY AND SHOULD NOT BE USED TO ESTABLISH, TRANSFER, OR DISPUTE BOUNDARIES.
3. PARCEL LINES DEPICTED HEREON MAY NOT HAVE BEEN FIELD VERIFIED AND MAY BE BASED UPON PUBLICLY AVAILABLE DATA.

DATA SOURCE:

TOPO MAP: USGS

PUBLICLY AVAILABLE DATA
SOURCES HAVE NOT BEEN
INDEPENDENTLY VERIFIED BY PFS.

PREPARED BY:



FIELD DATE:

02-24-16

DRAWING DATE:

04-25-16

BY:

KAD

CHECKED BY:

MLP

SITE NAME:

ANDERSON FACILITY 9-59-31-SESW

SURFACE LOCATION:

SE 1/4 SW 1/4 SEC. 31, T9N, R59W, 6TH P.M.
WELD COUNTY, COLORADO

PREPARED FOR:

