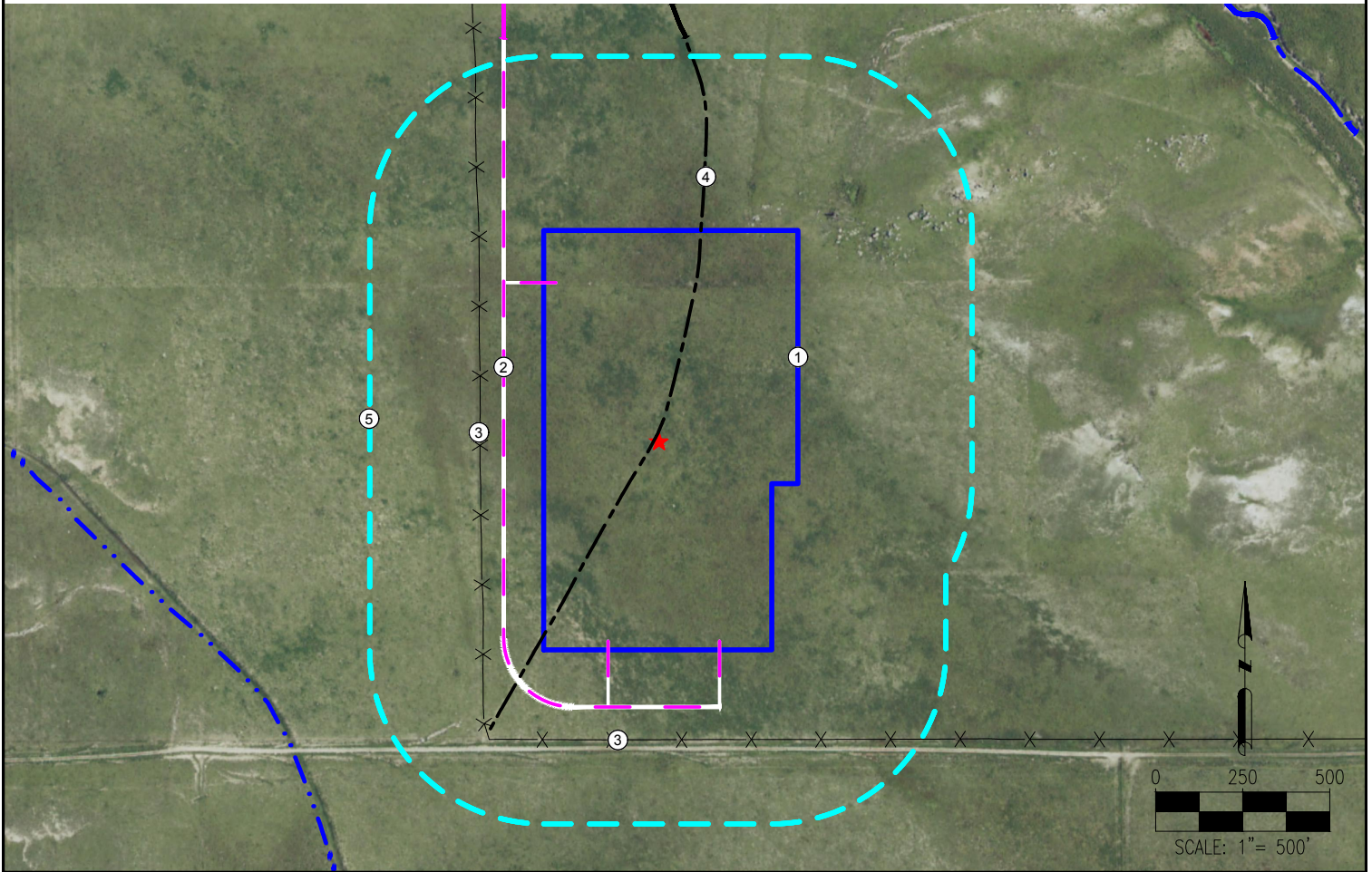


ANDERSON FACILITY 9-59-31-SESW LOCATION DRAWING



MEASUREMENTS ARE MADE FROM THE NEAREST EDGE OF THE DISTURBANCE AREA.

1. DISTURBANCE AREA
2. PROPOSED ACCESS ROAD
3. FENCES ARE $\pm 174'$ W, $\pm 258'$ S
4. PRIVATE ROAD IS $\pm 0'$
5. 500' RADIUS

LEGEND:

---	= PROPOSED ROAD	 	= DISTURBANCE AREA
---	= STREAM	 	= 500' RADIUS
-.-.-	= DITCH		
---	= EXISTING ROAD		
X X X X X	= FENCE		

MEASURED FROM NEAREST FACILITY EQUIPMENT:

BUILDING	$\pm 5280'$ NW
BUILDING UNIT	$\pm 5280'$ NW
PUBLIC ROAD (COUNTY ROAD 100)	$\pm 4097'$ N
PROPERTY LINE (STATE OF COLORADO)	$\pm 266'$ W
UTILITY (POWERLINE)	$\pm 5280'$ NW
RAILROAD	$\pm 5280'$ W



LAT: 40.701705°
LONG: -104.023666°
ELEVATION: 4878'
890' FSL & 1844' FWL
PDOP: 2.9
GPS OPERATOR: ALEC SHULL

NOTES:

1. THIS ILLUSTRATION DOES NOT REPRESENT A MONUMENTED LAND SURVEY AND THEREFORE CANNOT BE RELIED UPON TO DETERMINE OWNERSHIP.
2. THIS ILLUSTRATION IS INTENDED FOR REFERENCE USE ONLY AND SHOULD NOT BE USED TO ESTABLISH, TRANSFER, OR DISPUTE BOUNDARIES.
3. PARCEL LINES DEPICTED HEREON MAY NOT HAVE BEEN FIELD VERIFIED AND MAY BE BASED UPON PUBLICLY AVAILABLE DATA.

DATA SOURCE:

AERIAL IMAGERY: NAIP 2015
WATER WELLS: COLORADO DWR
NHD: USGS

PUBLICLY AVAILABLE DATA
SOURCES HAVE NOT BEEN
INDEPENDENTLY VERIFIED BY
PFS.

MEASURED FROM NEAREST EDGE OF DISTURBANCE:

SURFACE WATER (DITCH) $\pm 777'$ SW

MEASURED FROM NEAREST FACILITY EQUIPMENT:
WATER WELL $\pm 2753'$ SW SWL = 77'
PERMIT: 123001 RECEIPT: 9066355

DISTURBANCE ACREAGE:

19.37 ACRES DRILLING OPERATIONS
19.37 ACRES INTERIM RECLAIM

CURRENT SURFACE USE:
RANGELAND

FUTURE SURFACE USE:
RANGELAND

PREPARED BY:



FIELD DATE:

02-24-16

DRAWING DATE:

04-25-16

BY:

KAD

CHECKED BY:

MLP

SITE NAME:

ANDERSON FACILITY 9-59-31-SESW

SURFACE LOCATION:

SE 1/4 SW 1/4 SEC. 31, T9N, R59W, 6TH P.M.
WELD COUNTY, COLORADO

PREPARED FOR:

