

## WELLBORE DIAGRAM

**Subsequent PA**

**Energy Search Company**

**Tsuzuki #6**

NWNW Sec. 27, T1S, R67W

SHL: 809 FNL, 560 FWL

Lat/Long: 39.940874/-104.882291

Adams County CO

05-001-07230

Directions: From 136th Ave at Yosemite, cont. 0.1  
mi S, cont. 0.1 mi E into

Spud date: 5/4/1977

Updated

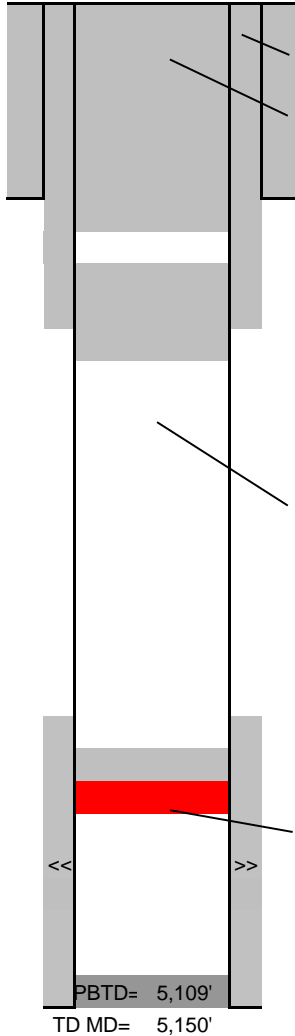
5/5/2016

FCO

G.L.= 5100

K.B.= 5107

7



Cut off casings 20' below GL and weld on marker plate w/ well  
name, number & API number.

Place 68 sks cement from 492' to surface

8-5/8" 24# set at 100'

Cmt'd w/ 100 sks to Surf.

Stage Tool at 1278' w/ cmnt to surface per CBL

Place 50 sks cement from 1333' to 905', tagged

TOC: 4264'  
Per CBL

Set CIBP at 5022' w/ 2 sks cement

SUSX 5068-5090', 44 holes

4.5", 10.5#, set 5150' (7-7/8" O.H.)

Cmt'd w/ 200 sks

PBTD= 5,109'

TD MD= 5,150'