



**CEMENT BOND LOG**  
**GAMMA RAY**  
**CCL**

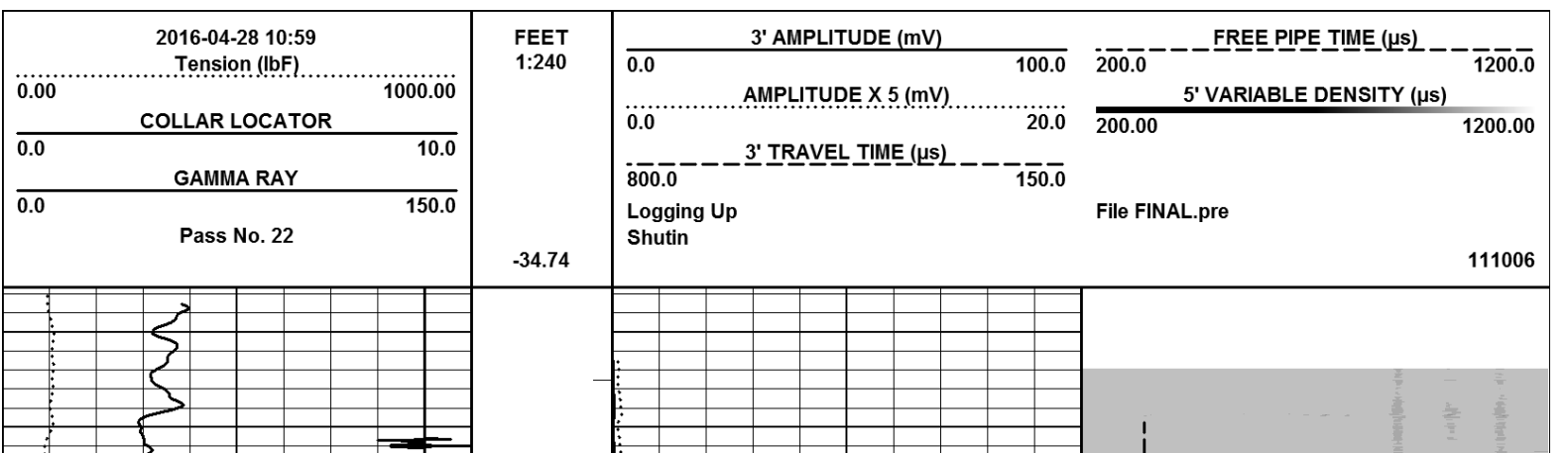
## ENERGY SERVICES

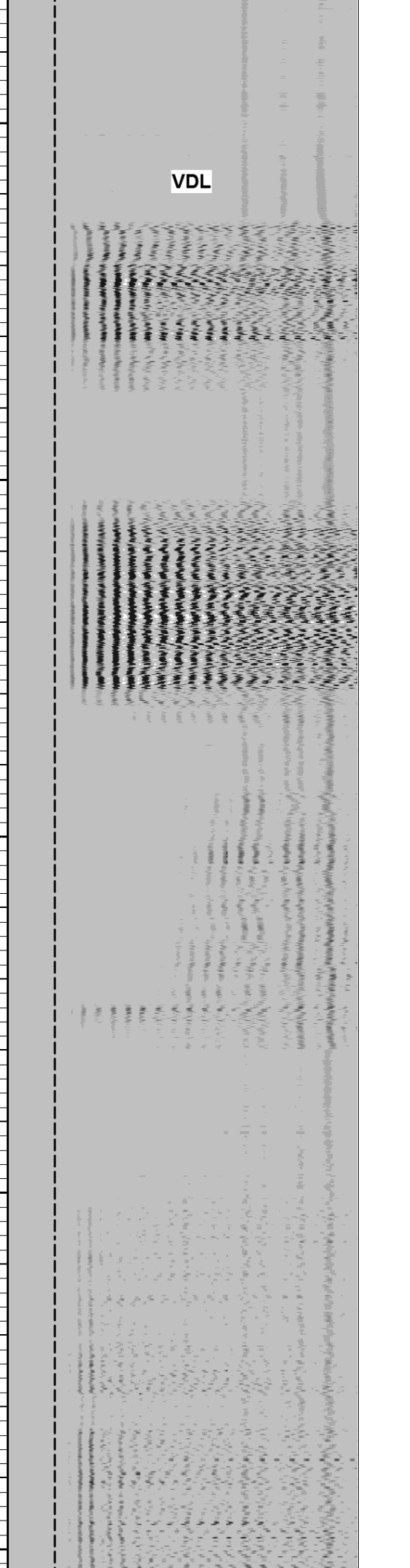
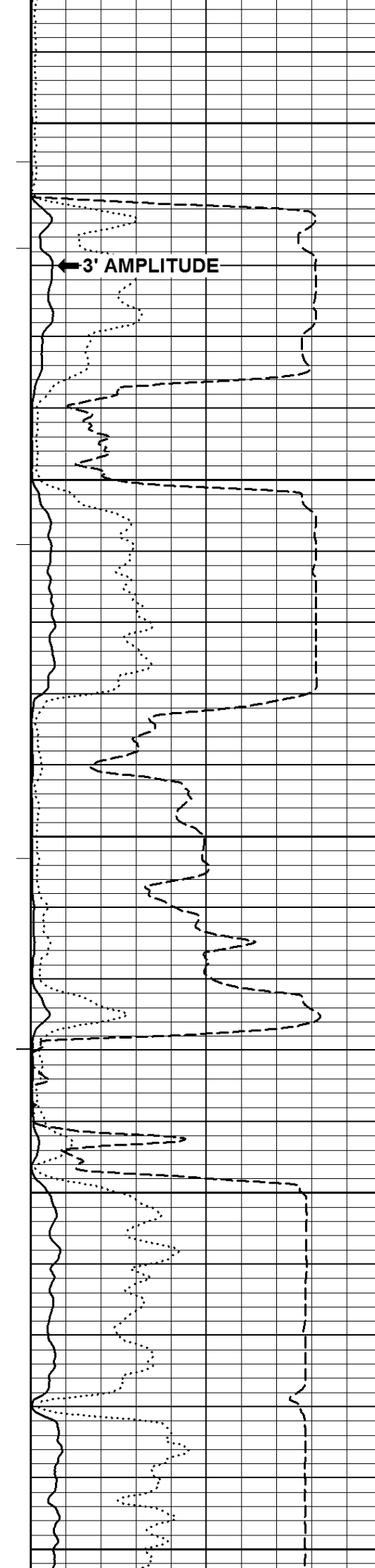
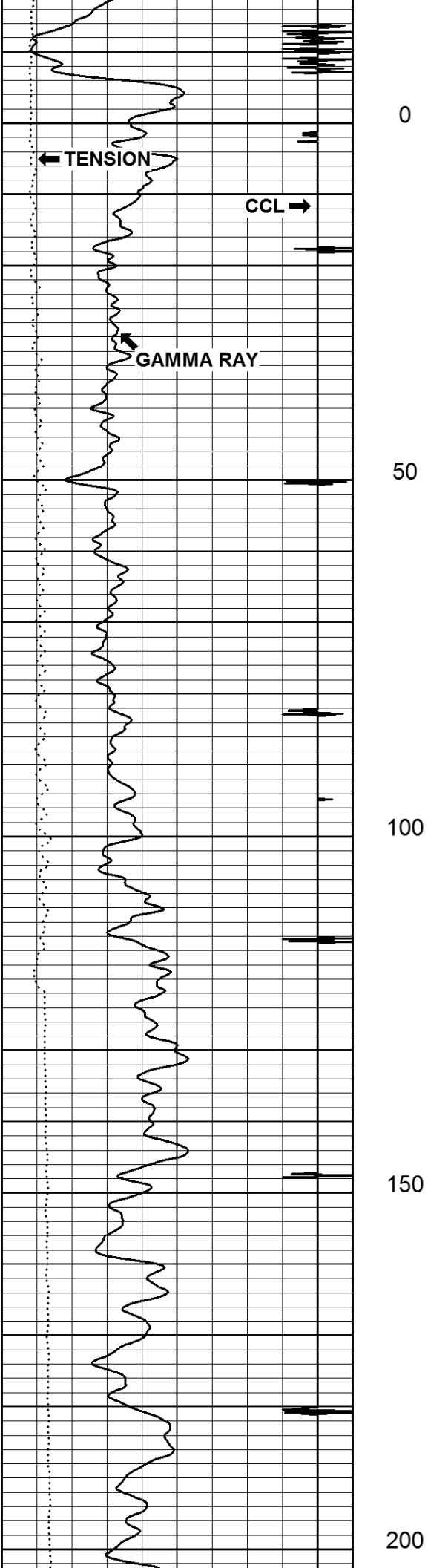
[illegible]

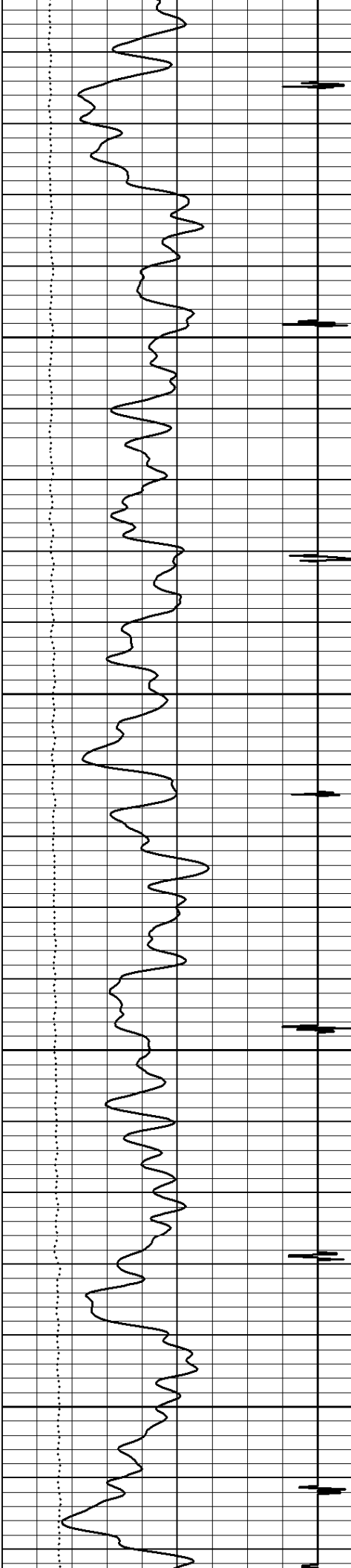
Remarks:

Previous Well Information	
Depth Control Log	
Perforated	
Bridge Plug Set At	
Cement Retainer Set At	
Production Packer Set At	

All interpretations are opinions based on inferences from electrical or other measurements and we cannot, and do not guarantee the accuracy or correctness of any interpretations, and we shall not, except in the case of gross or willful negligence on our part, be liable or responsible for any loss, costs, damages or expenses incurred or sustained by anyone resulting from any interpretation made by any of our officers, agents, or employees. These interpretations are also subject to our general terms and conditions as set out in our current price schedule.





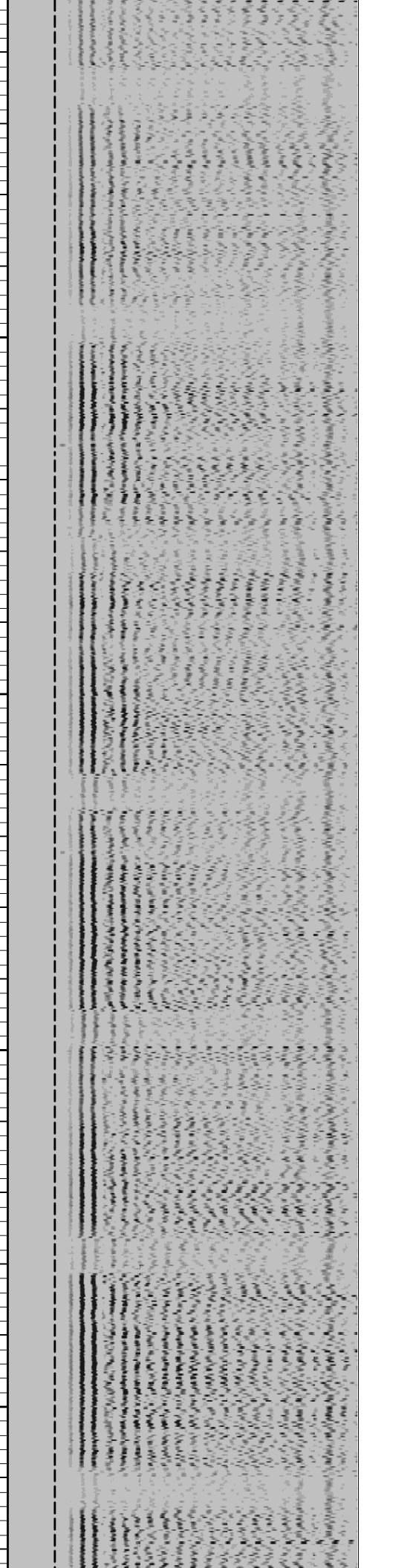
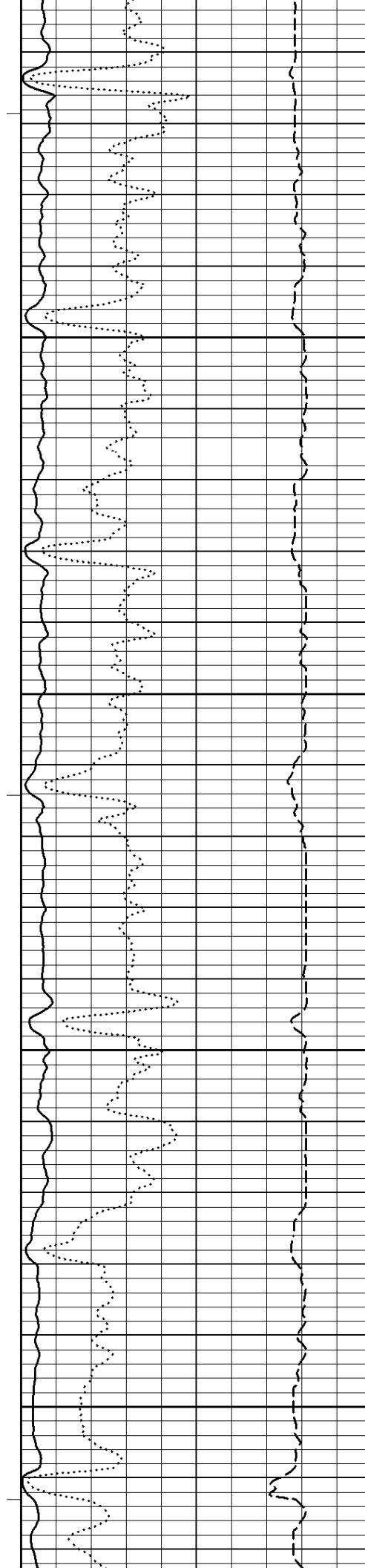


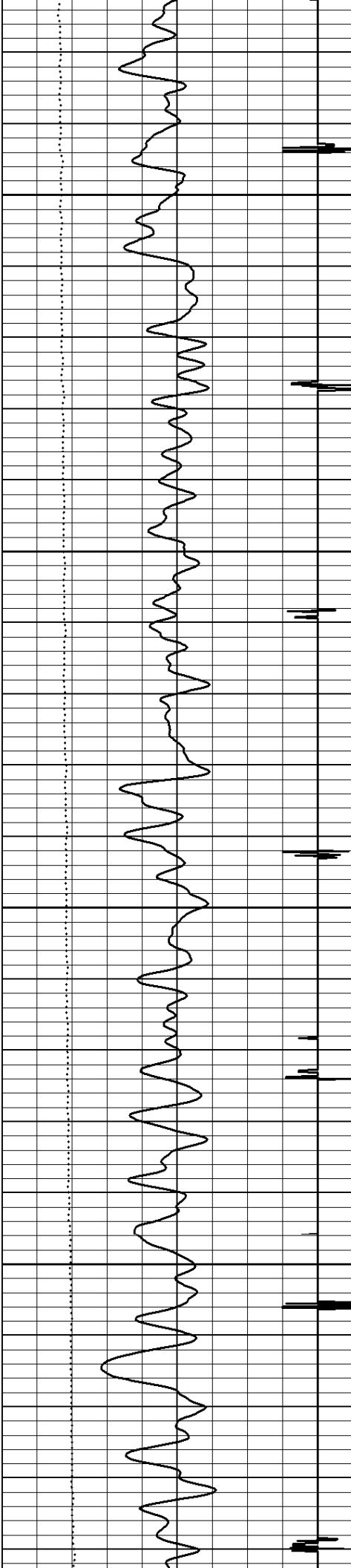
250

300

350

400



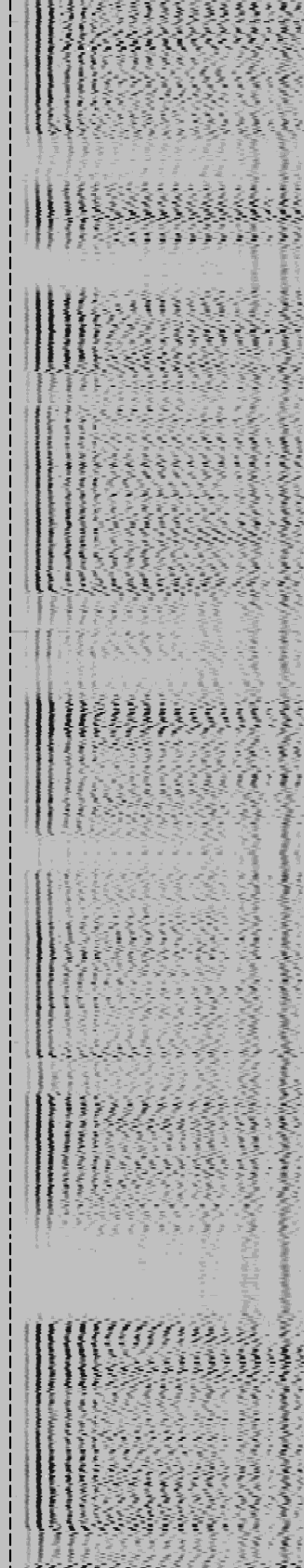
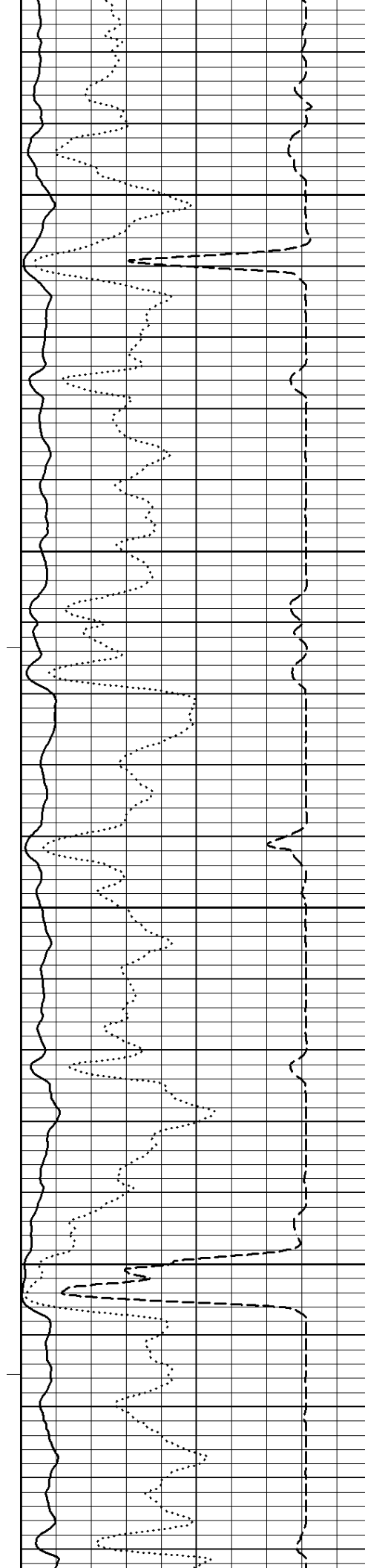


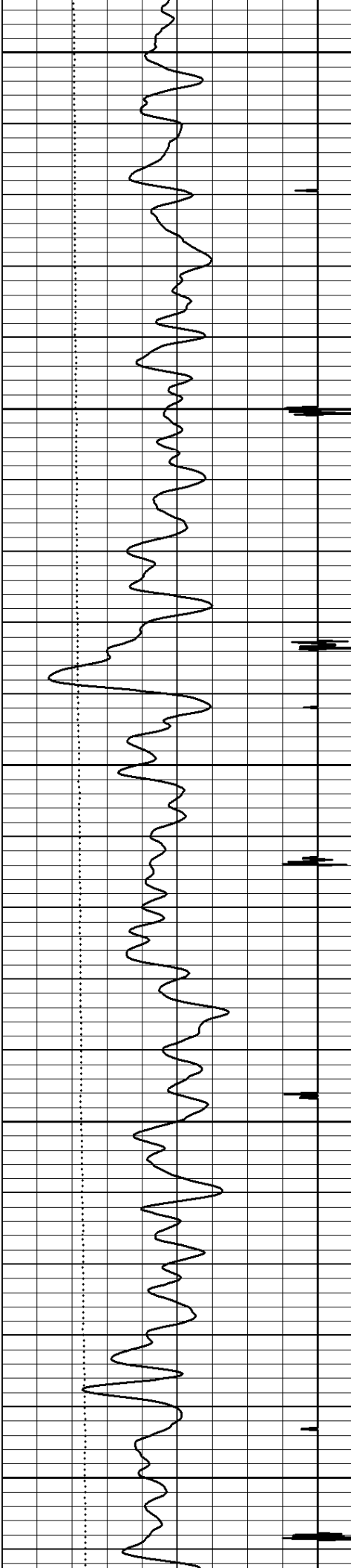
450

500

550

600





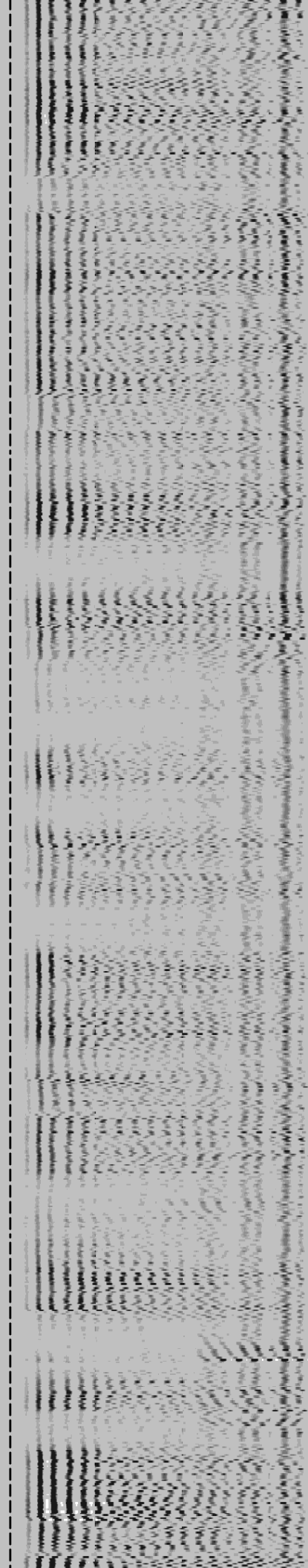
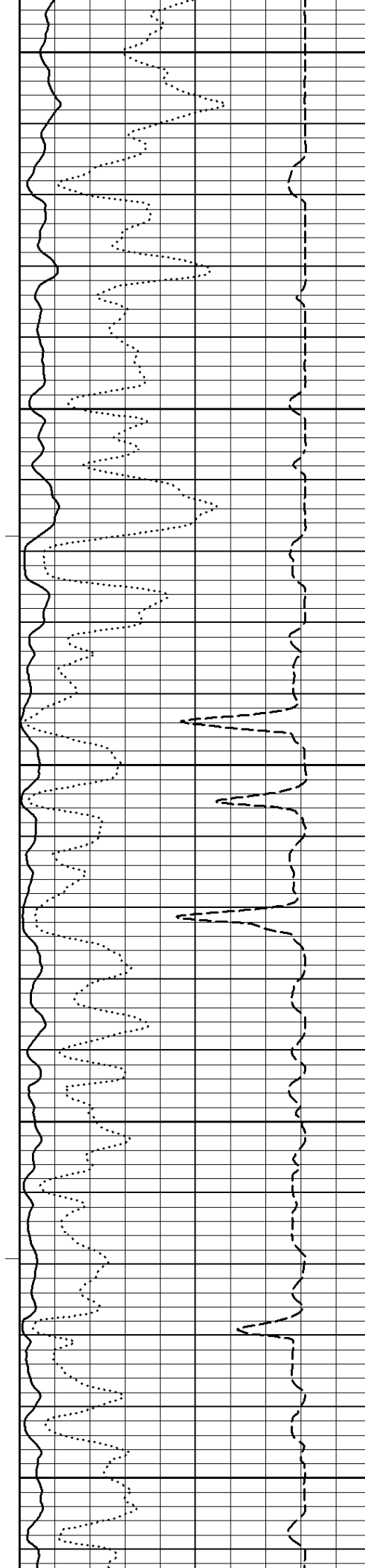
650

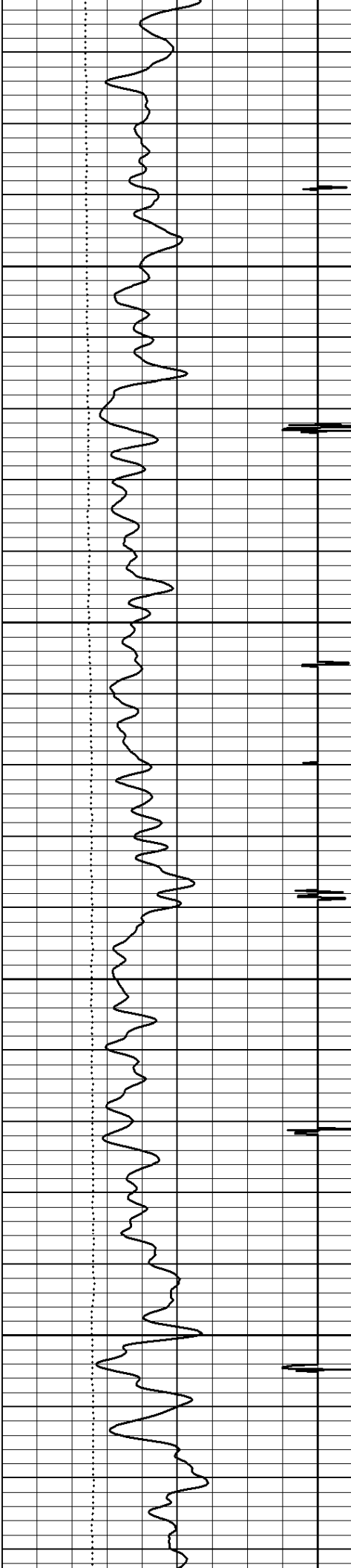
700

750

800

850



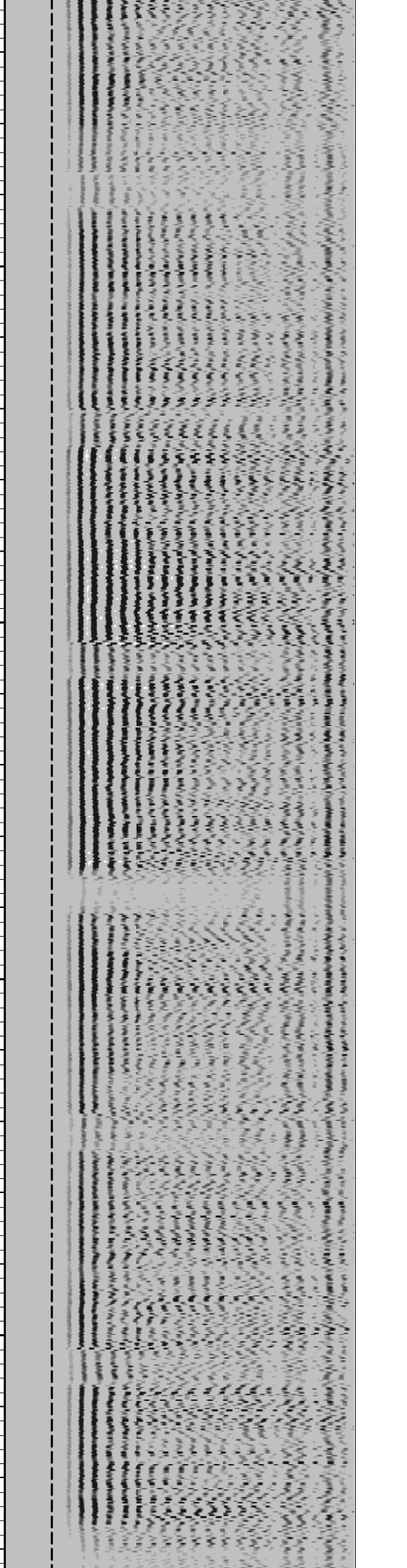
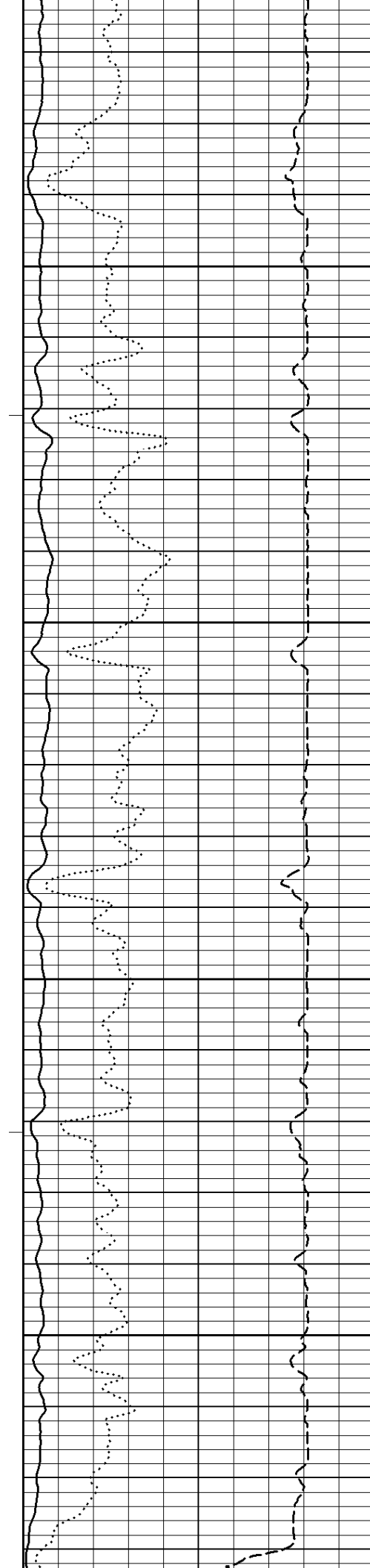


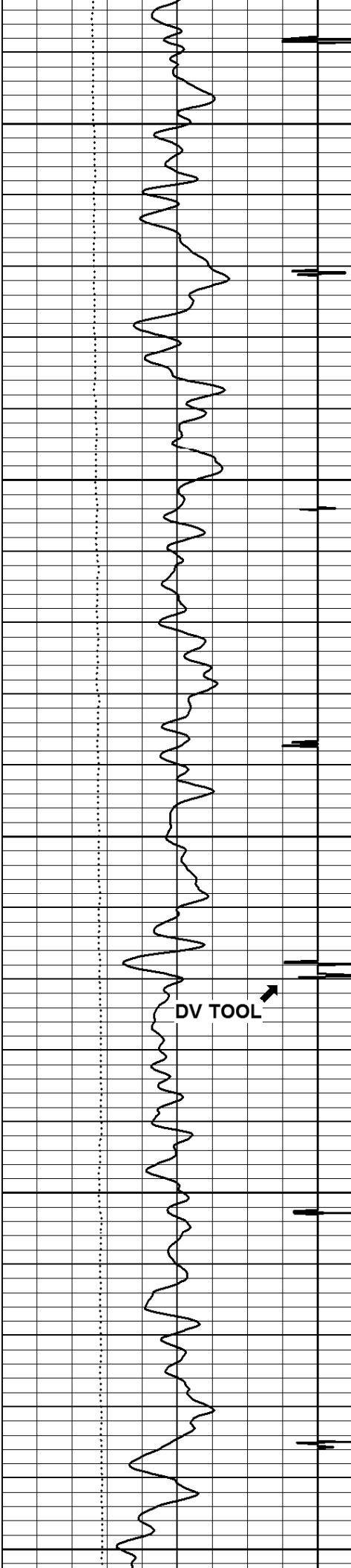
900

950

1000

1050





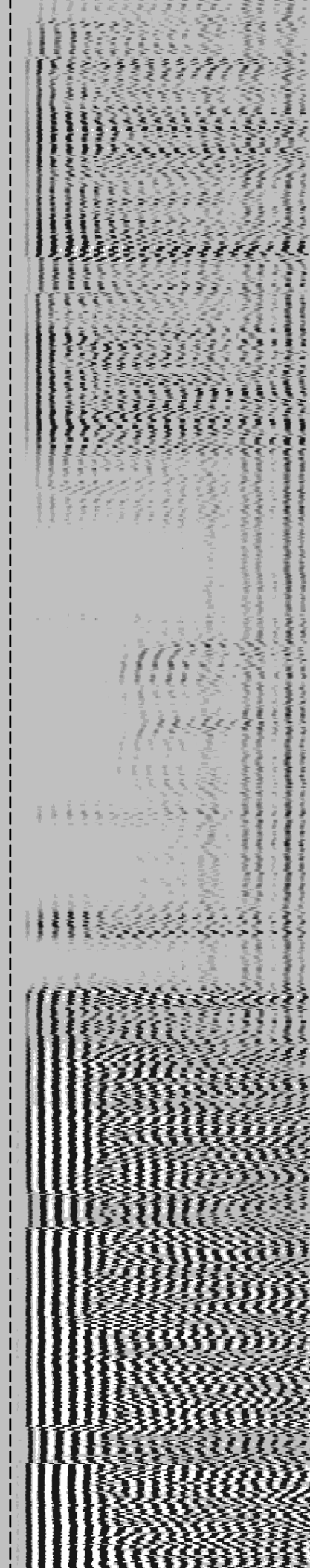
1100

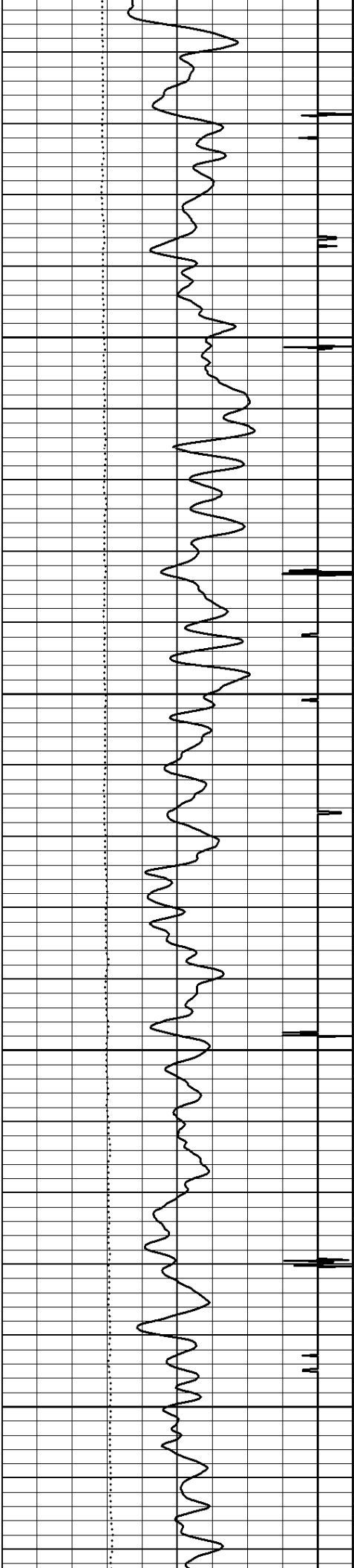
1150

1200

1250

1300



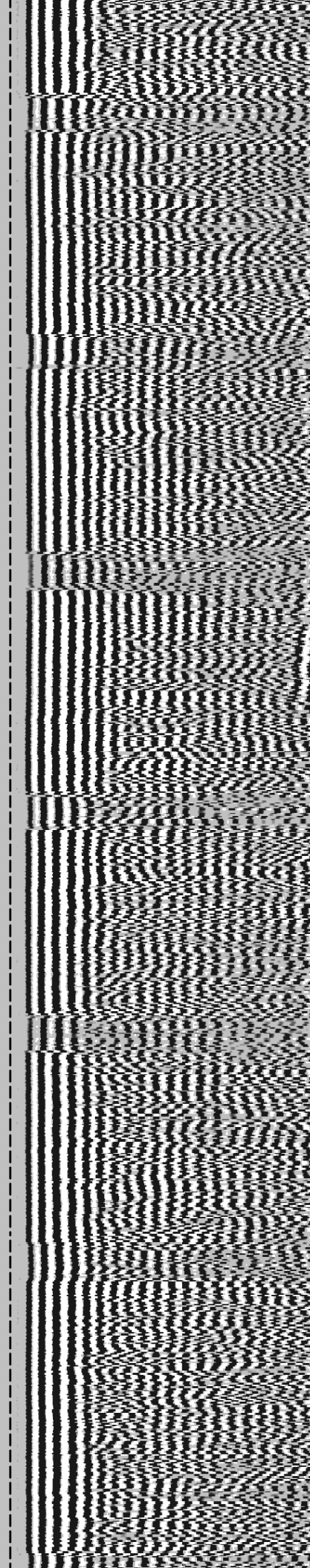
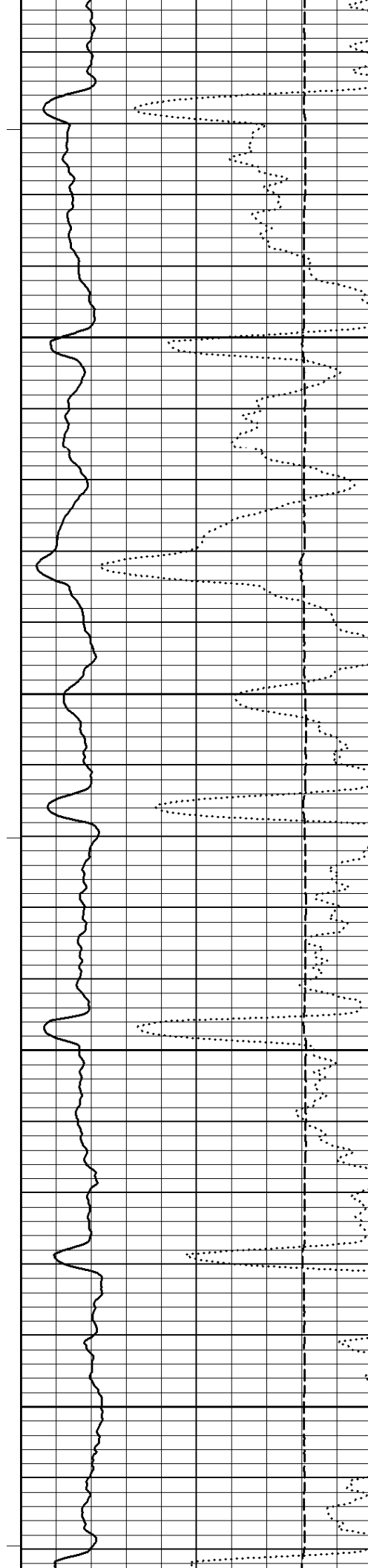


1350

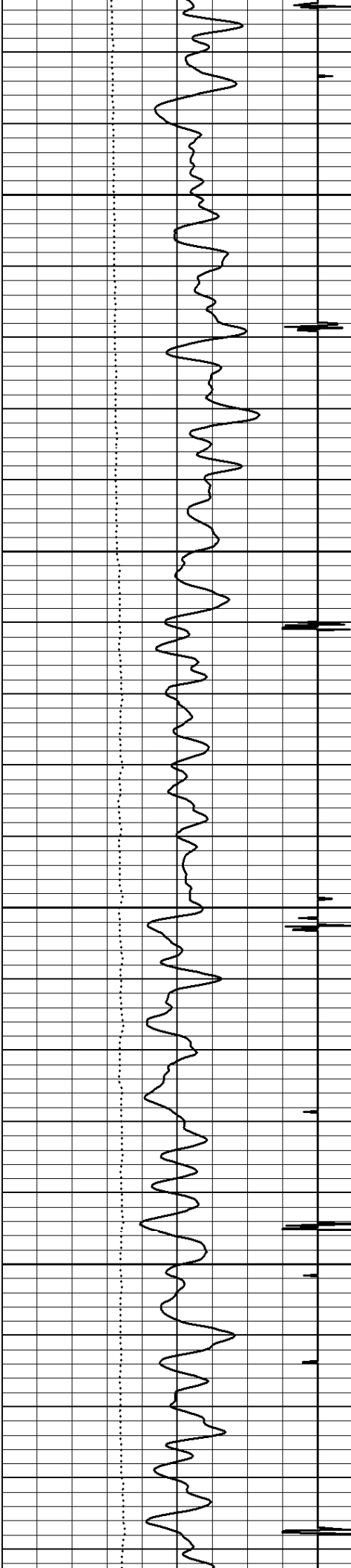
1400

1450

1500





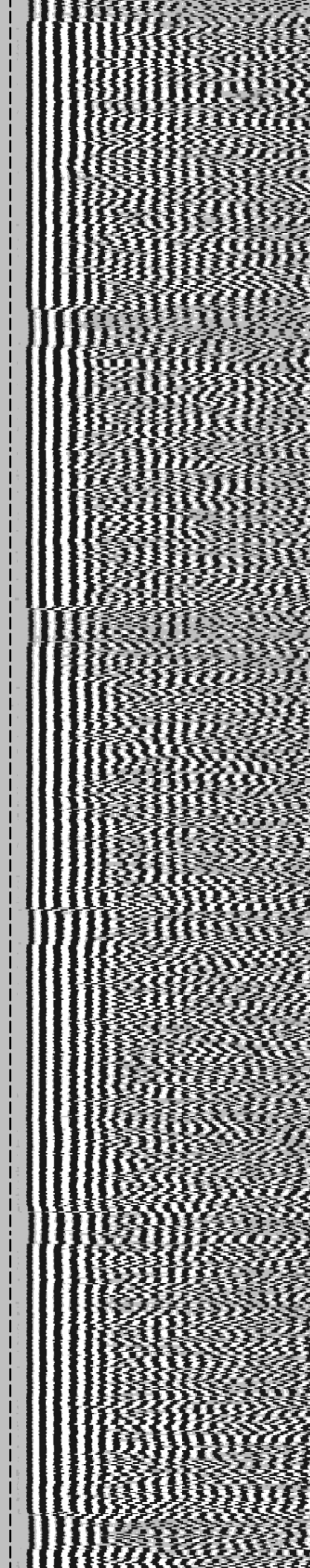
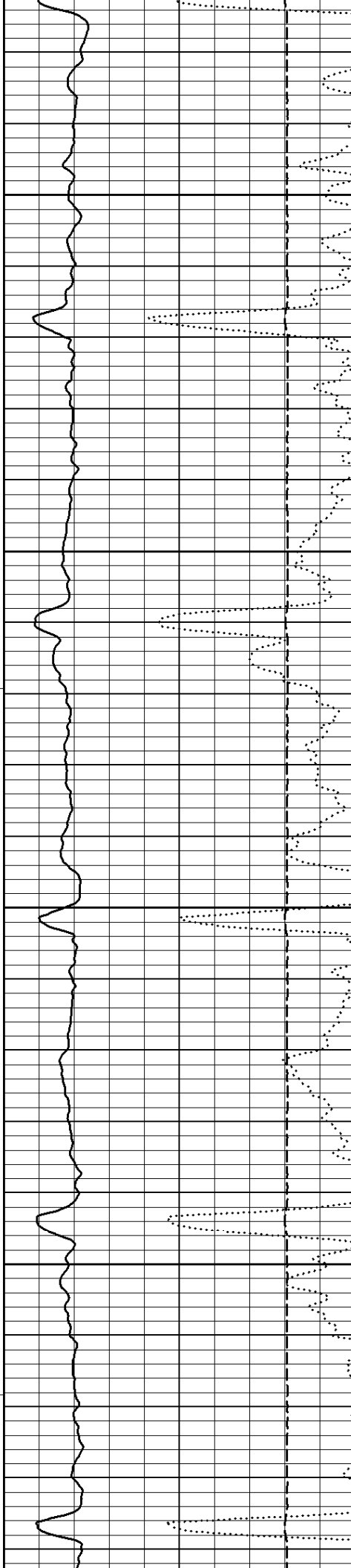


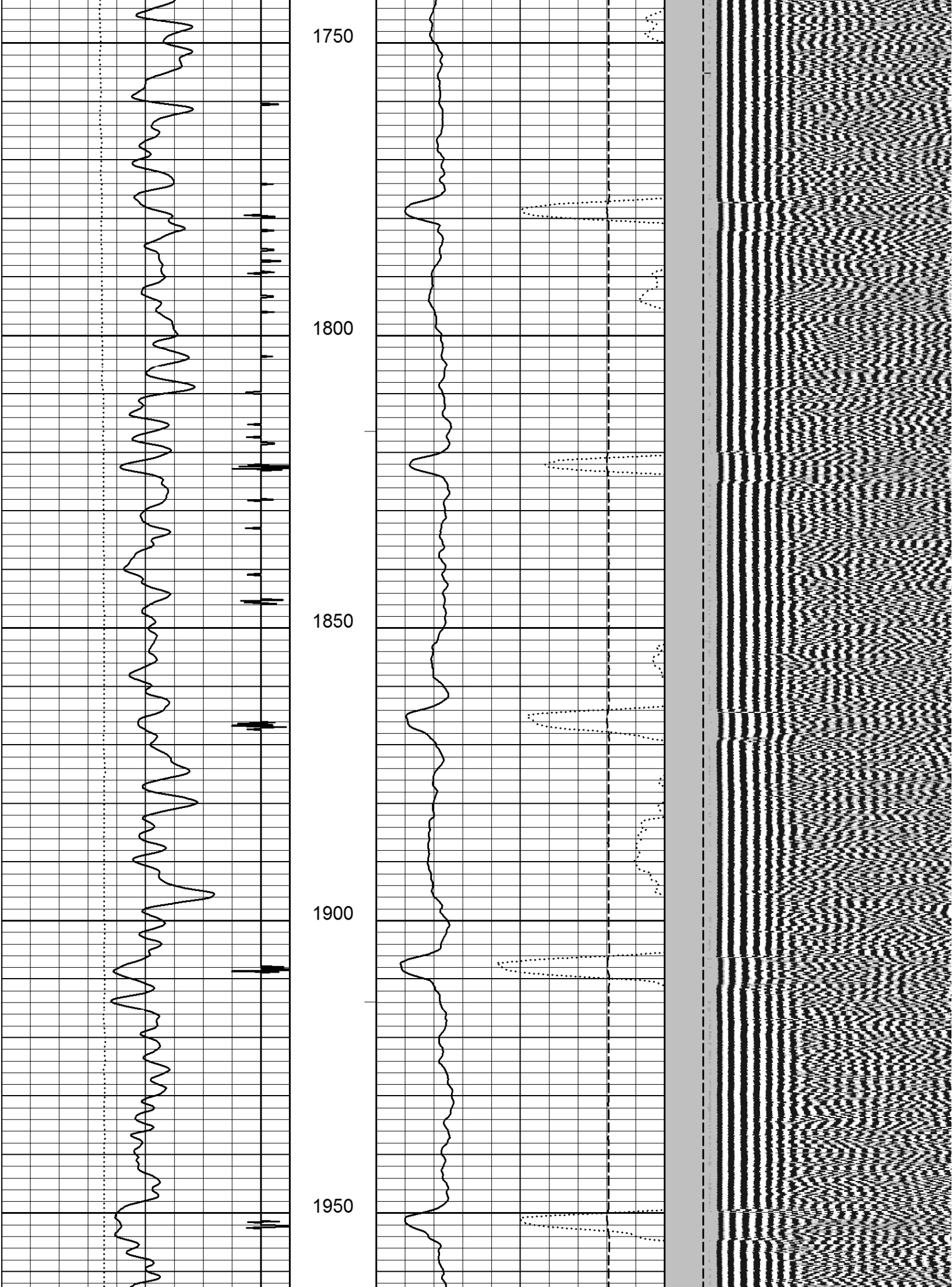
1550

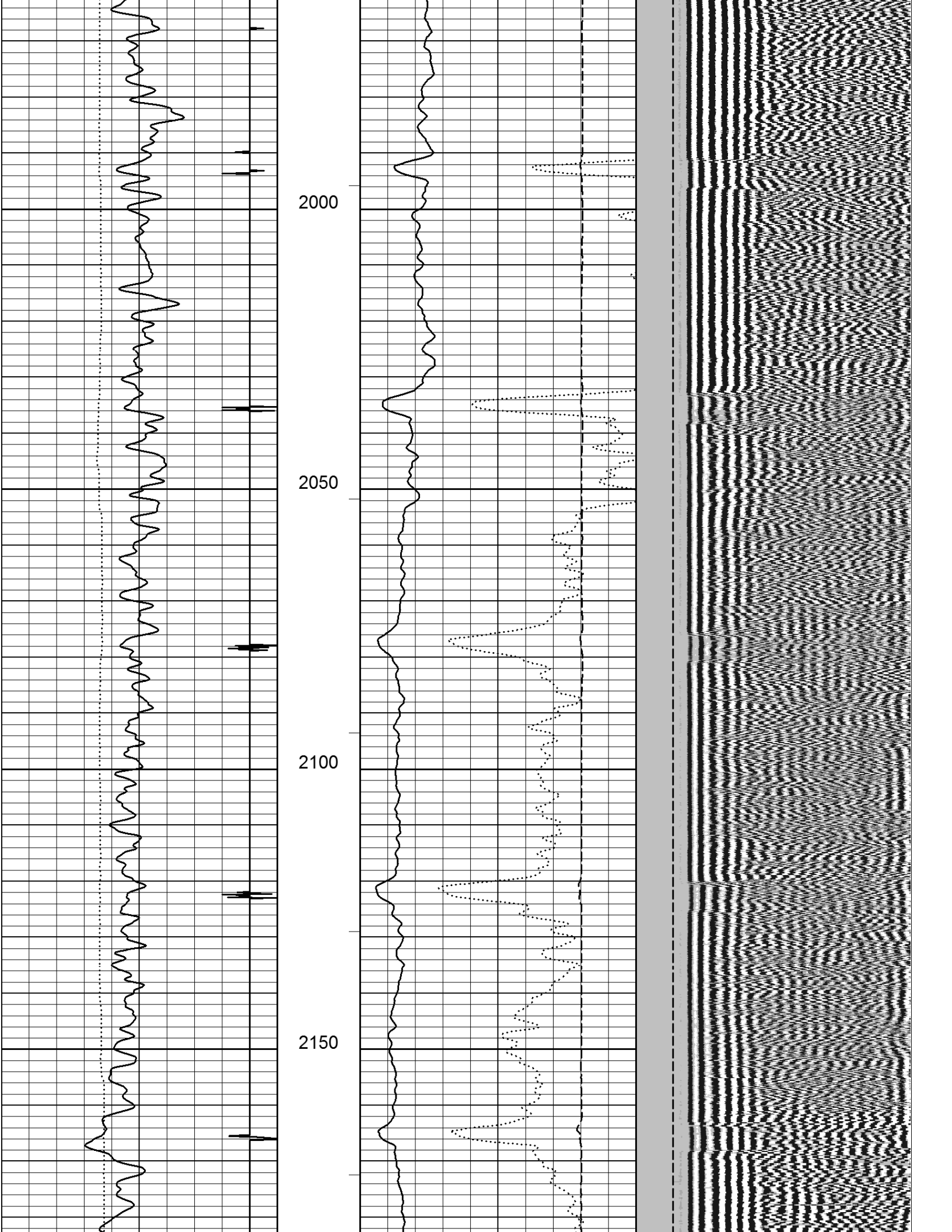
1600

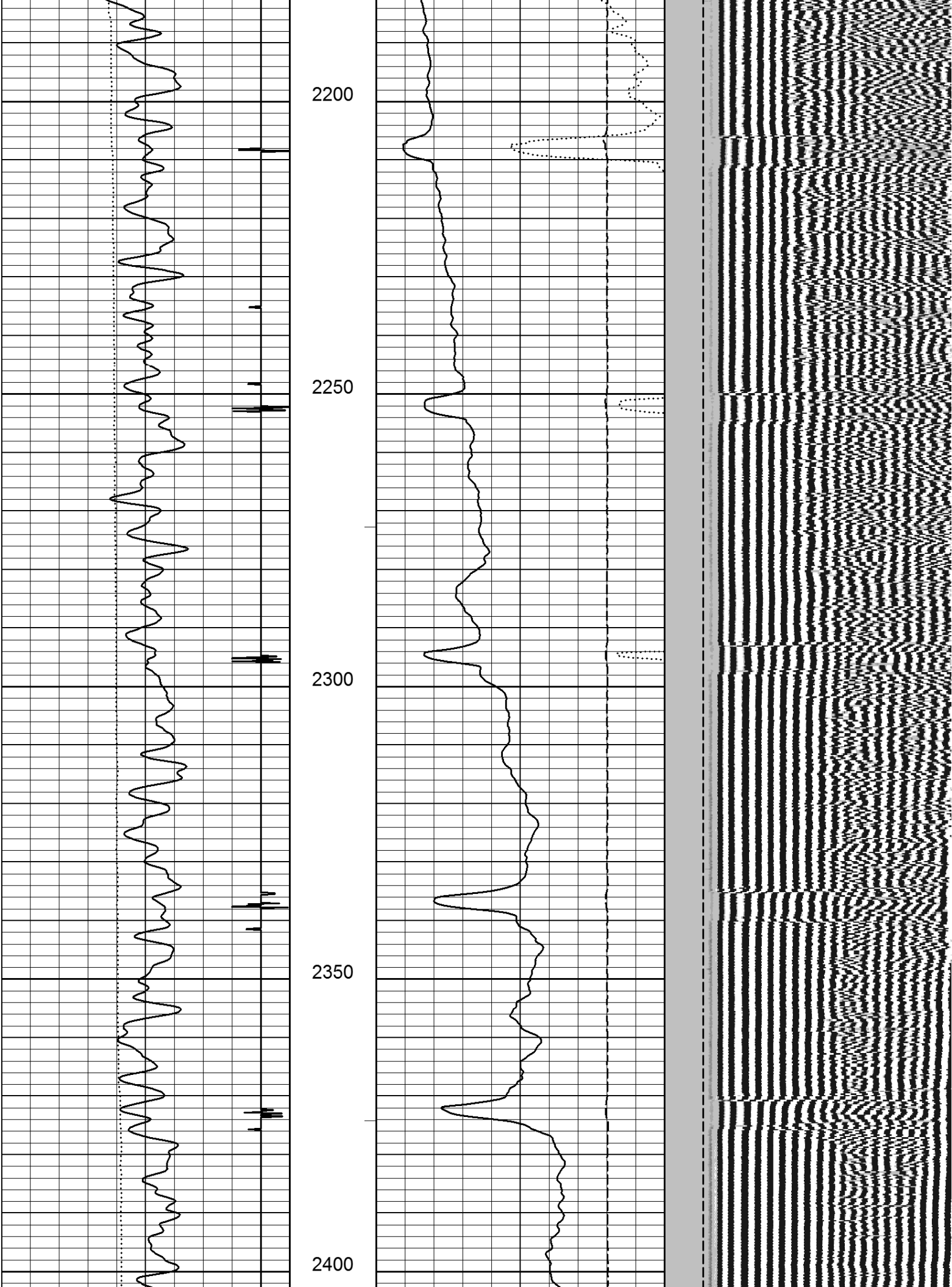
1650

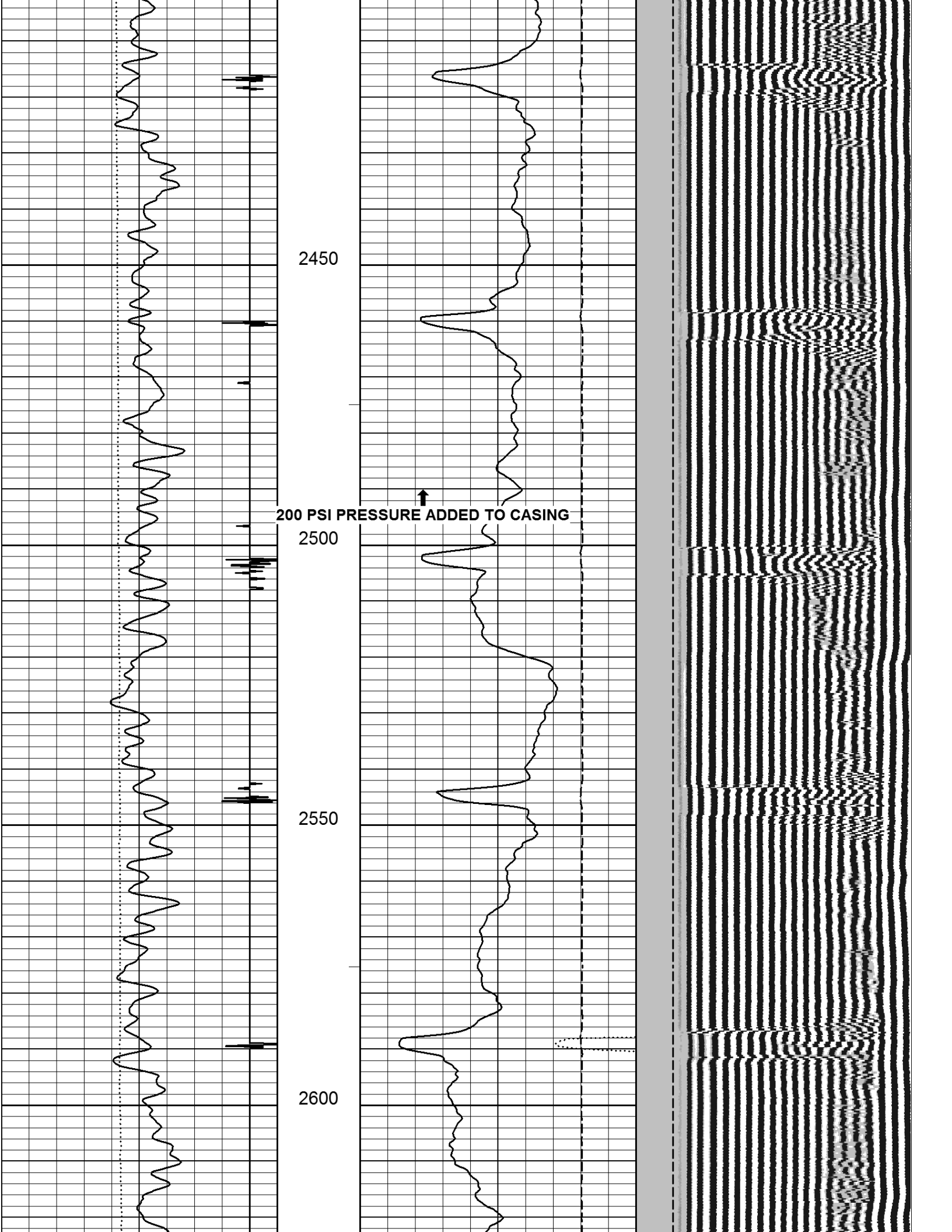
1700

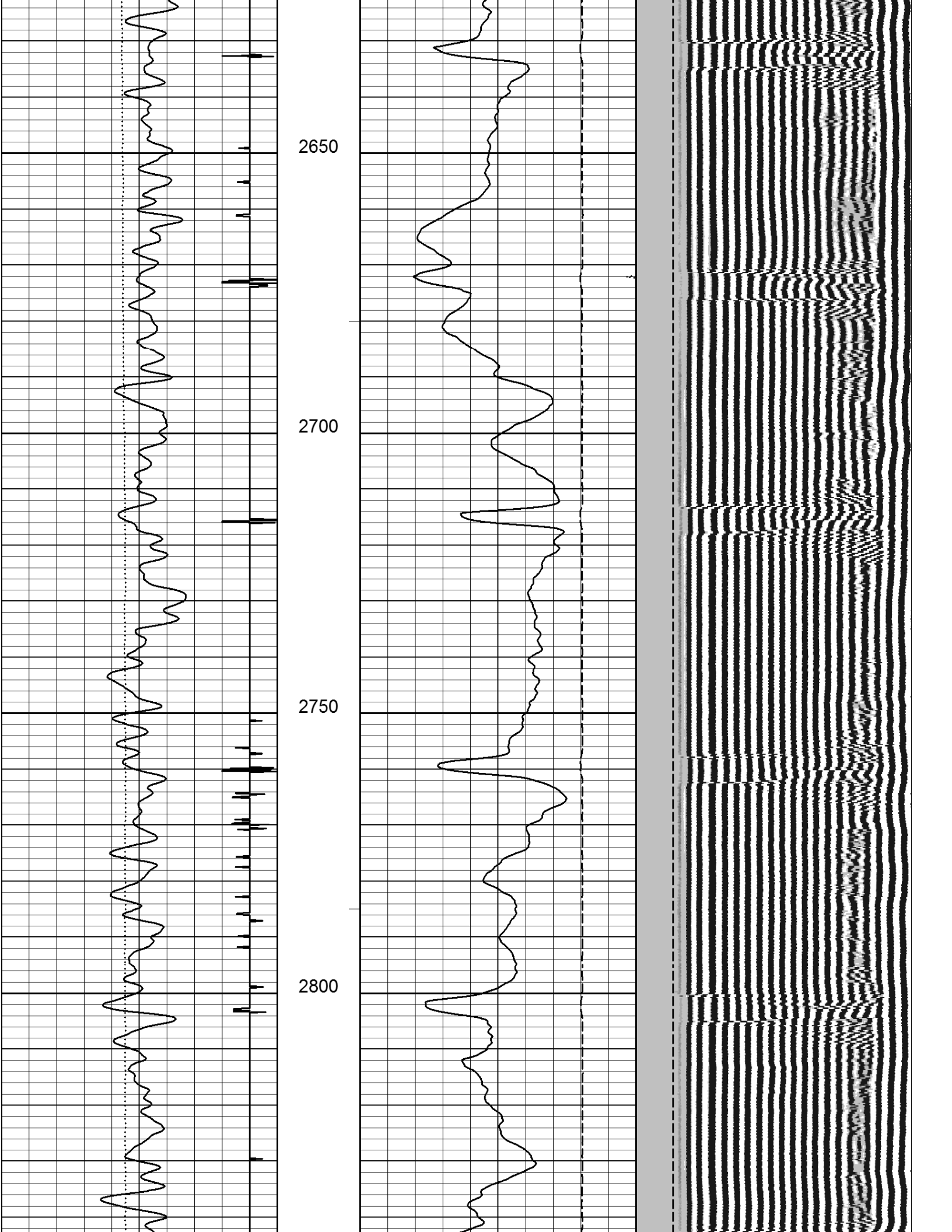


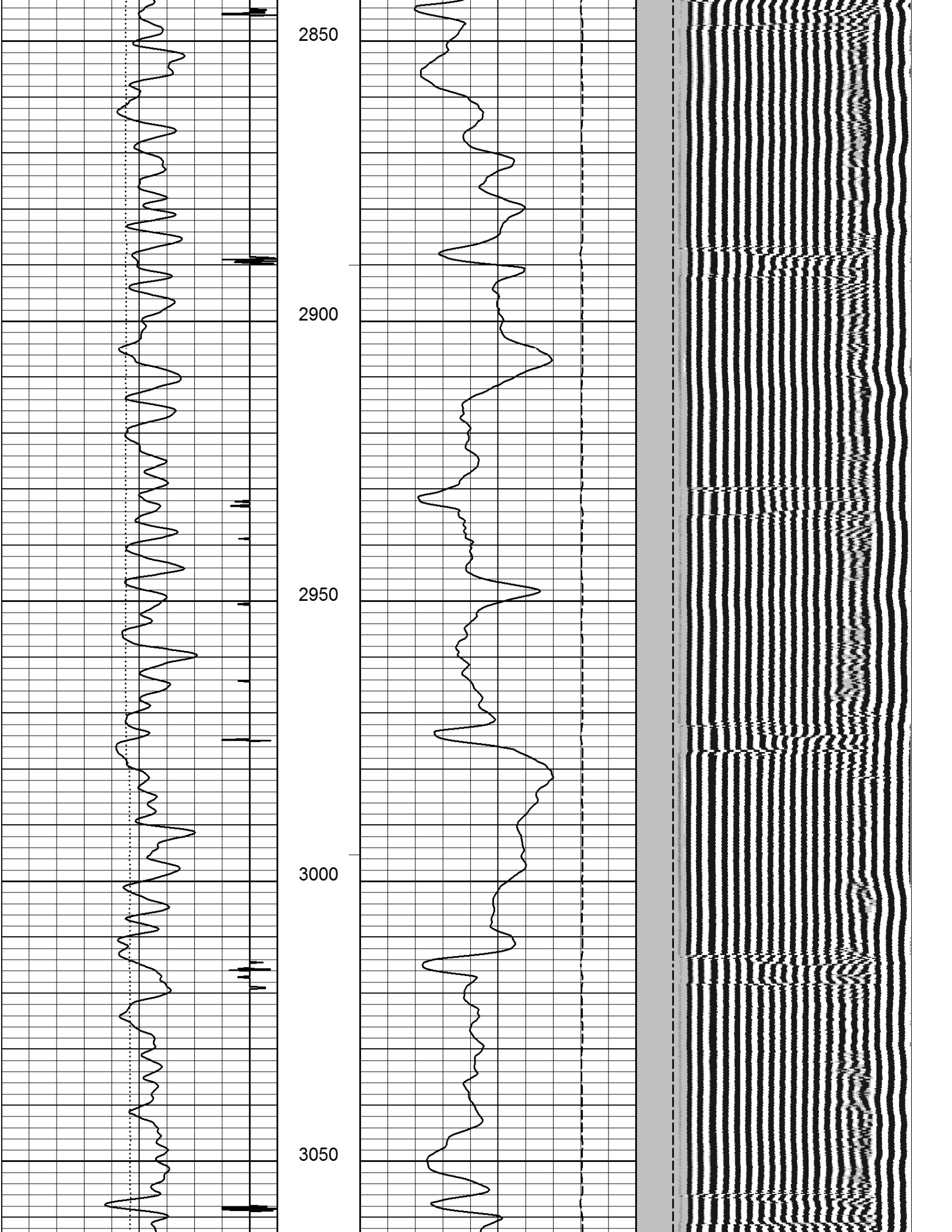


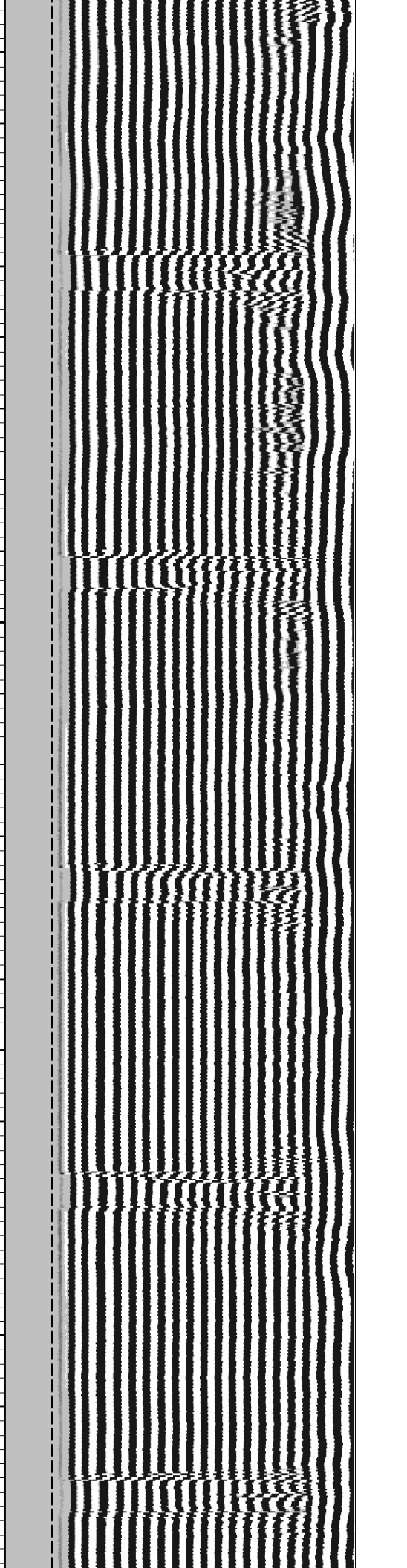
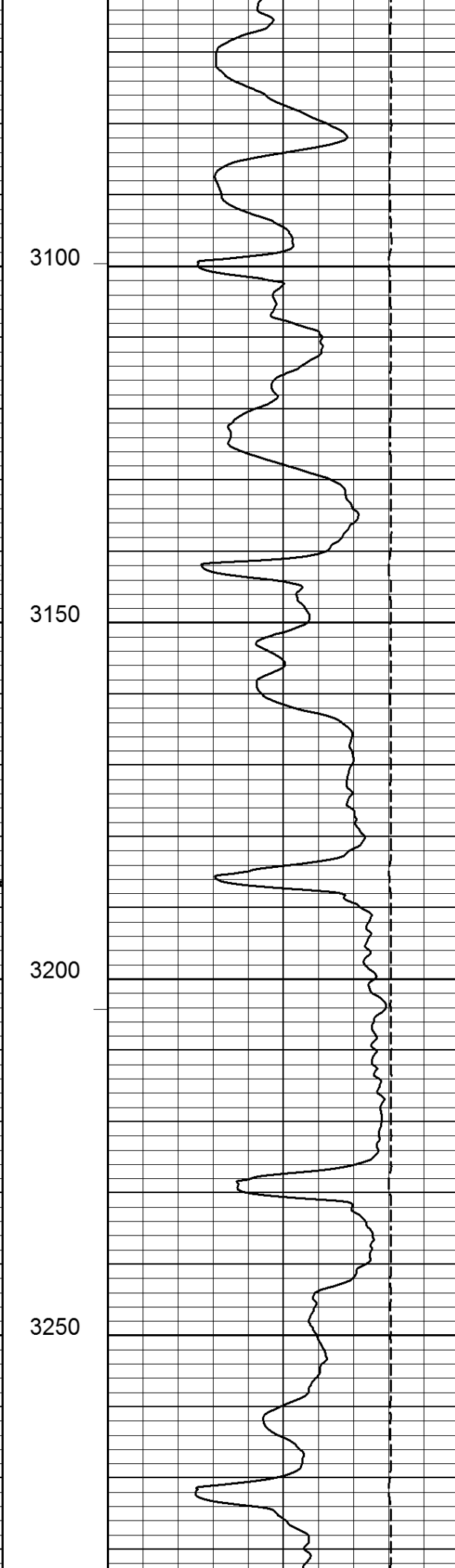
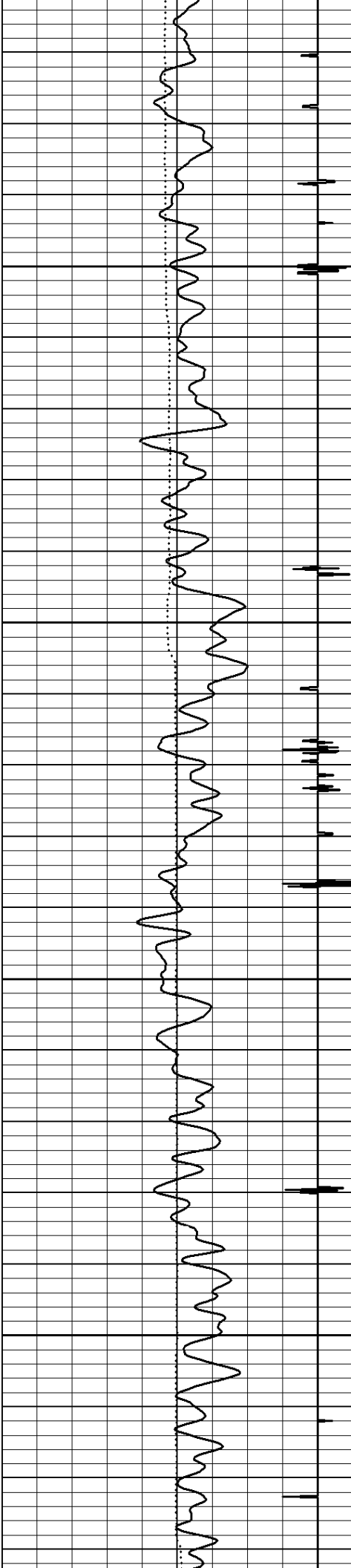




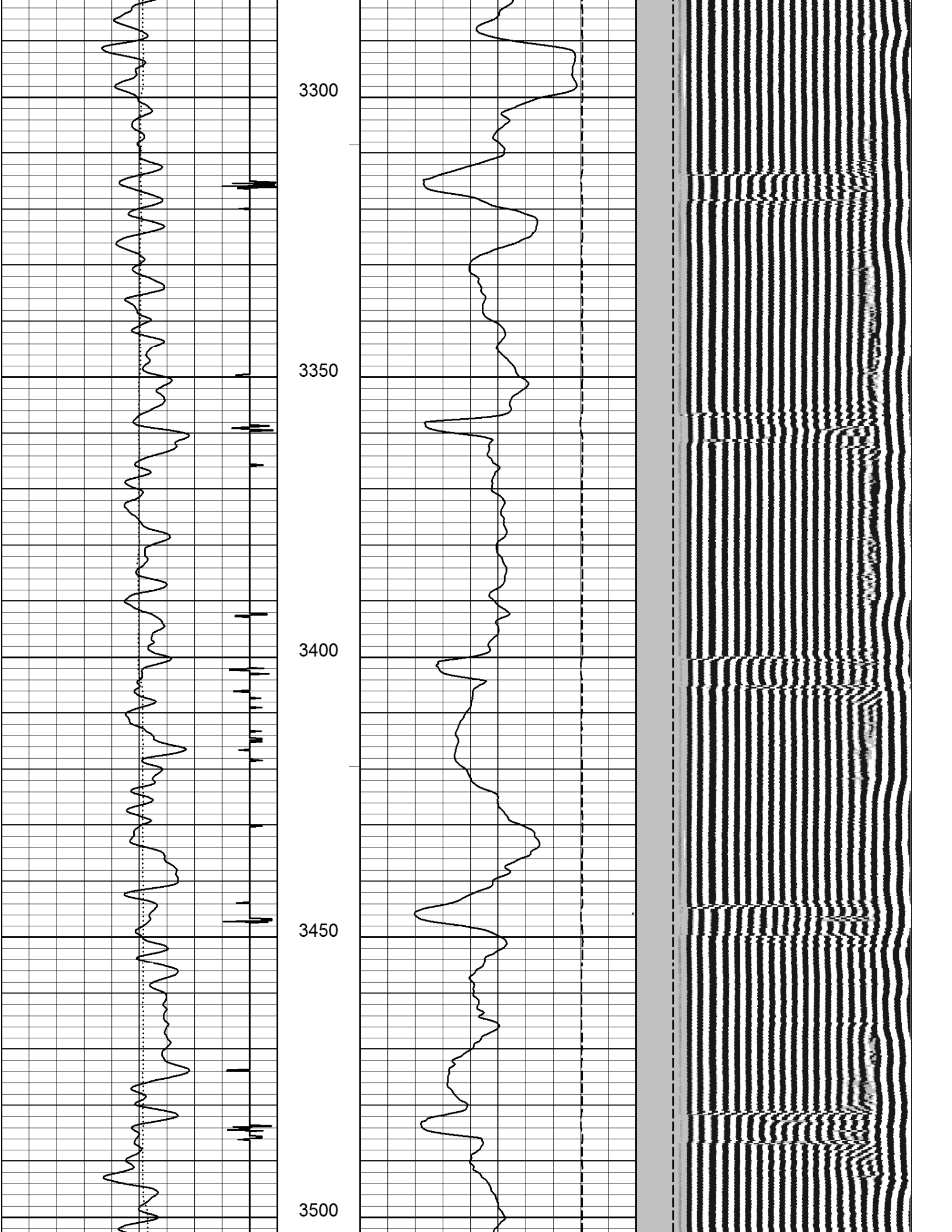


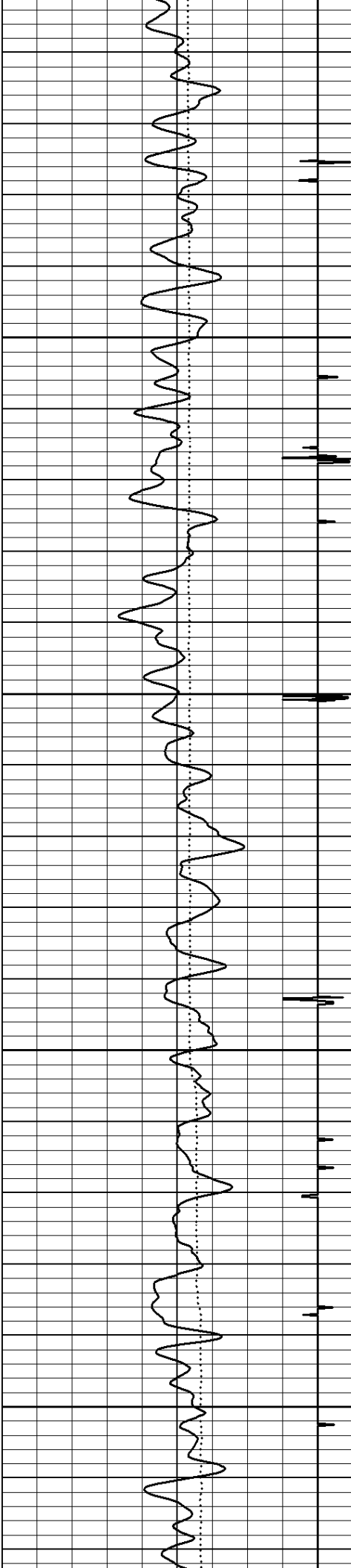










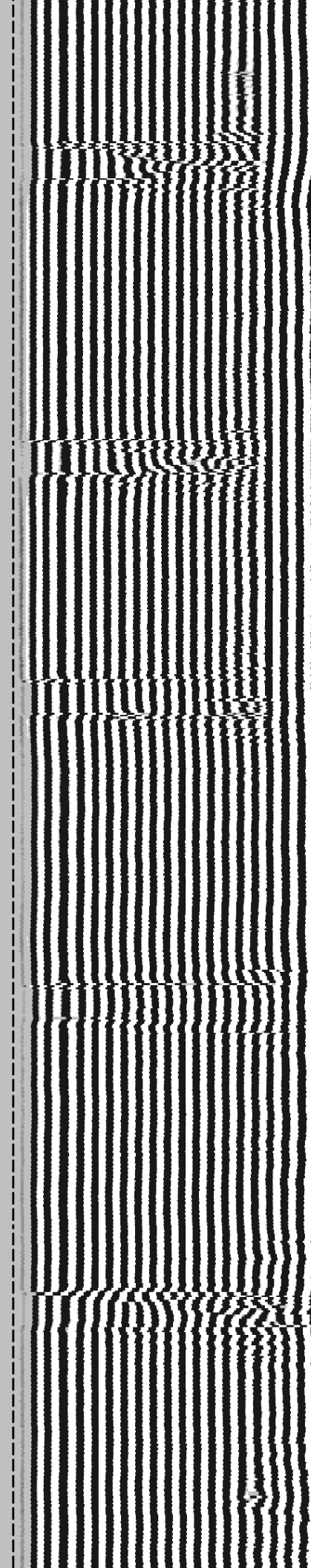
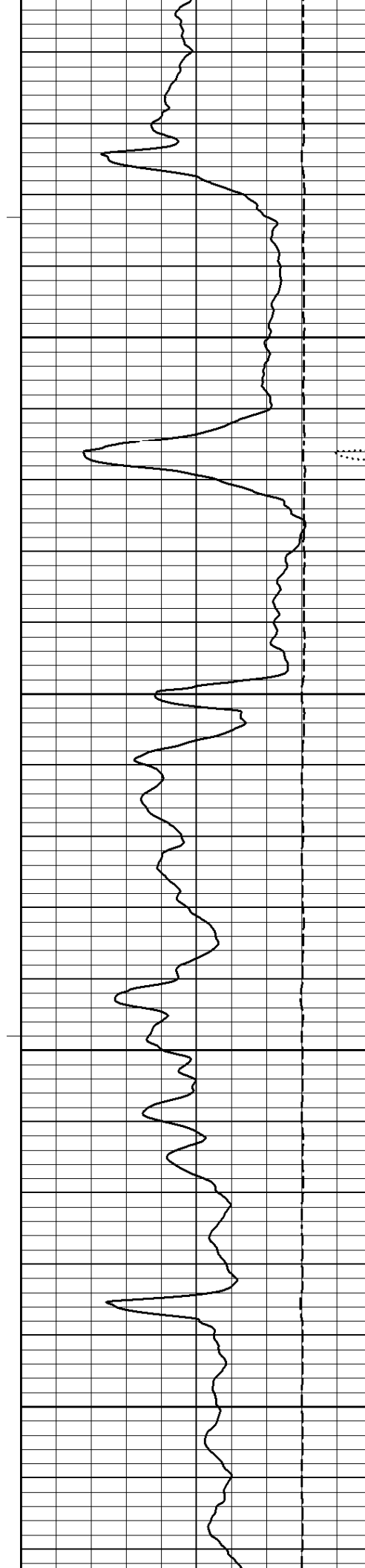


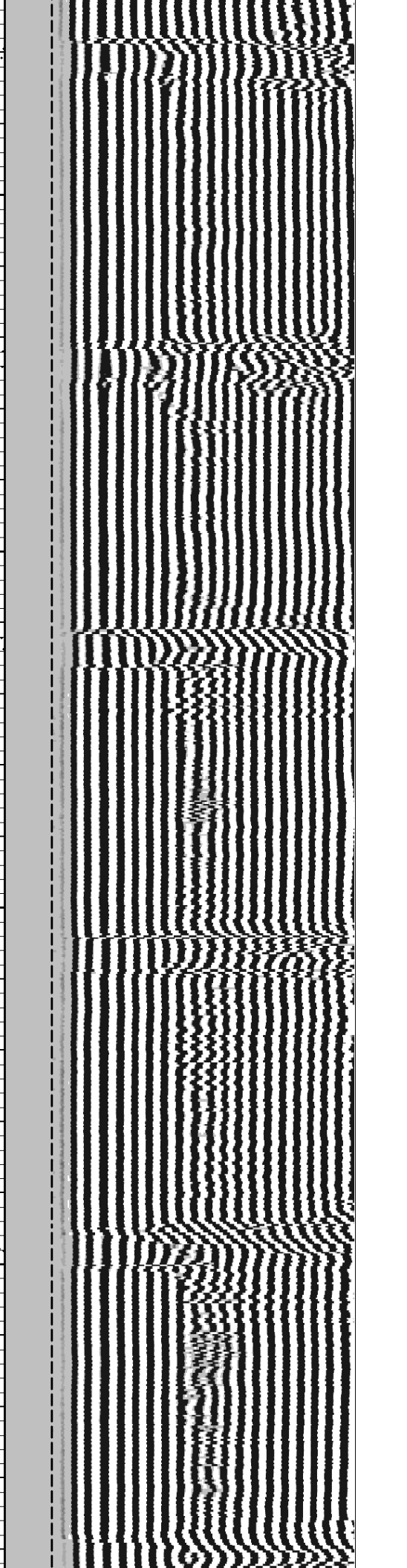
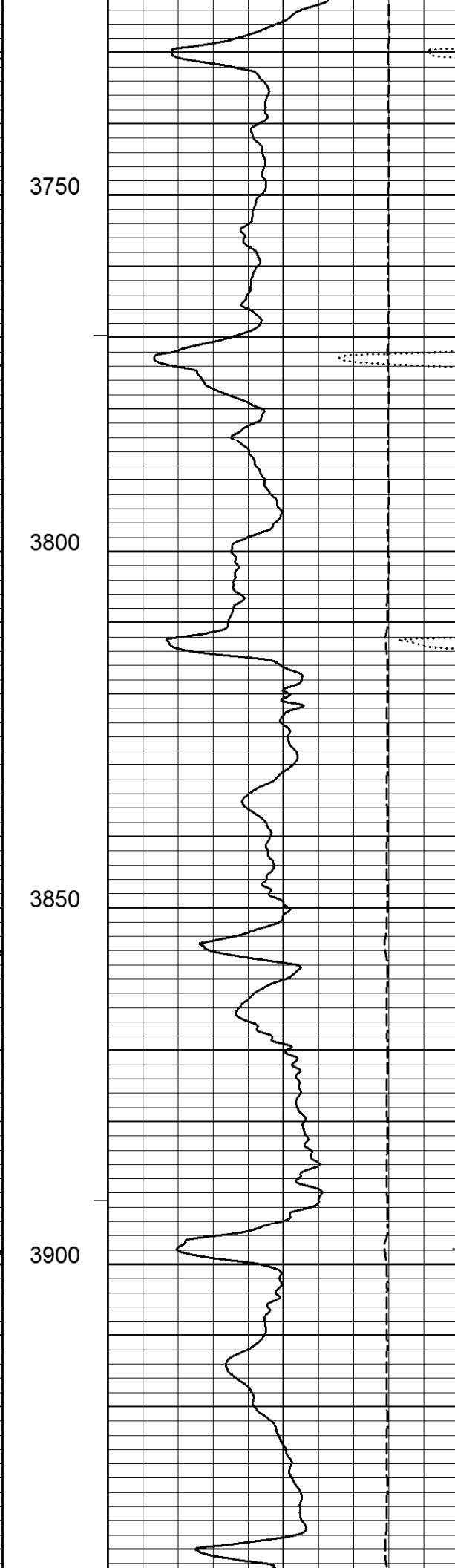
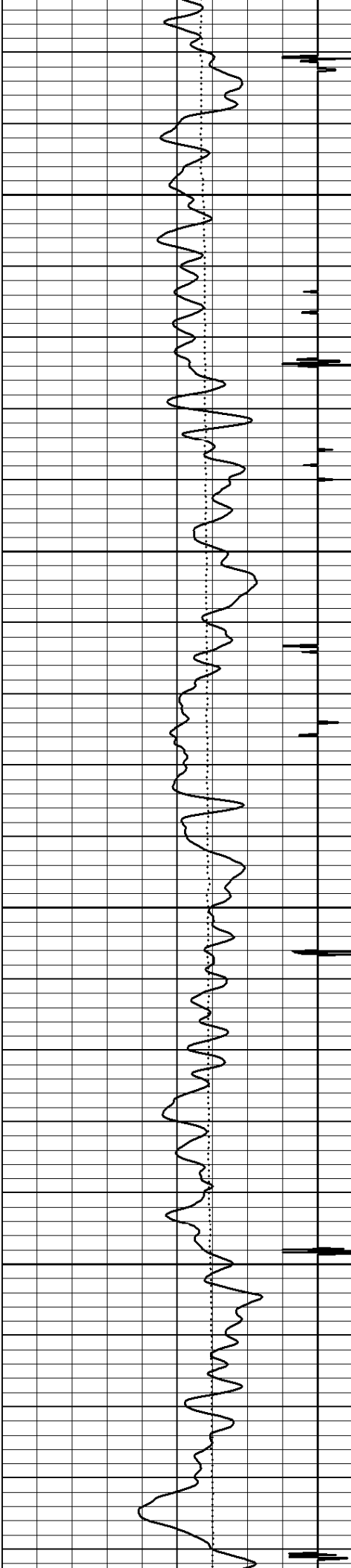
3550

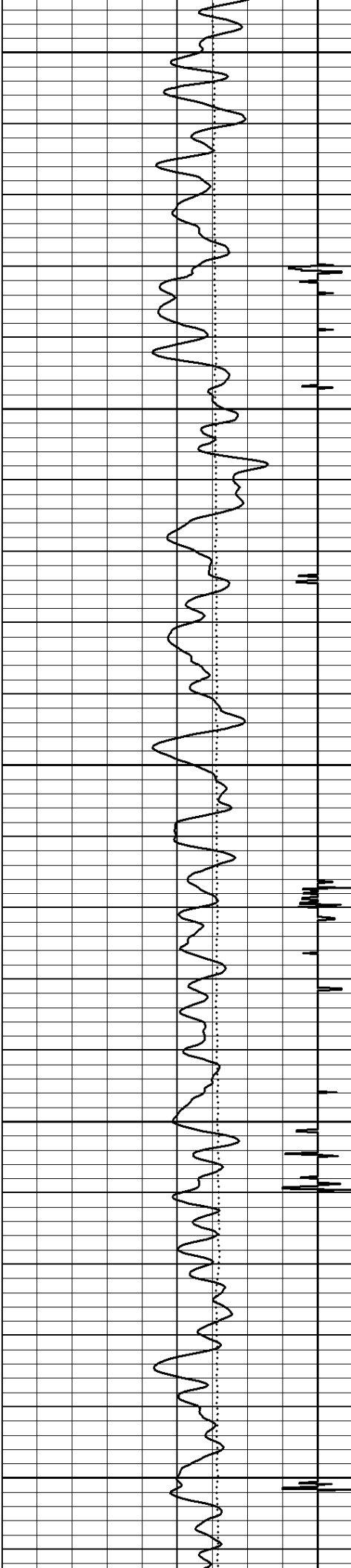
3600

3650

3700







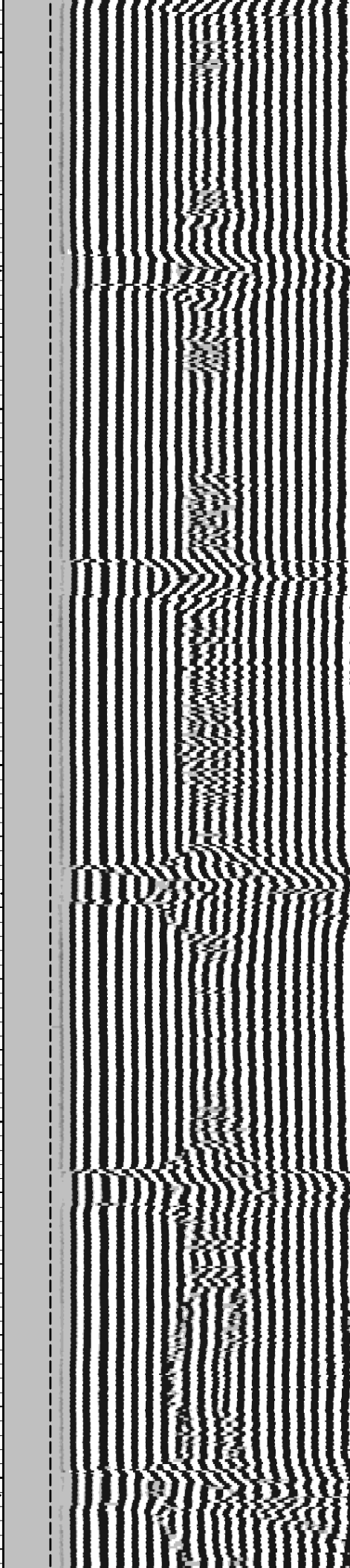
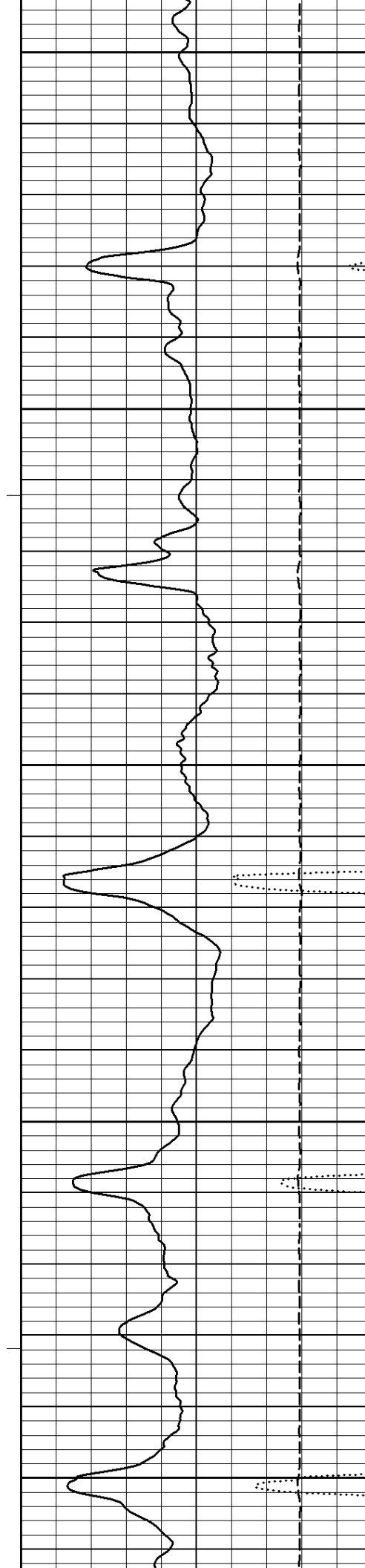
3950

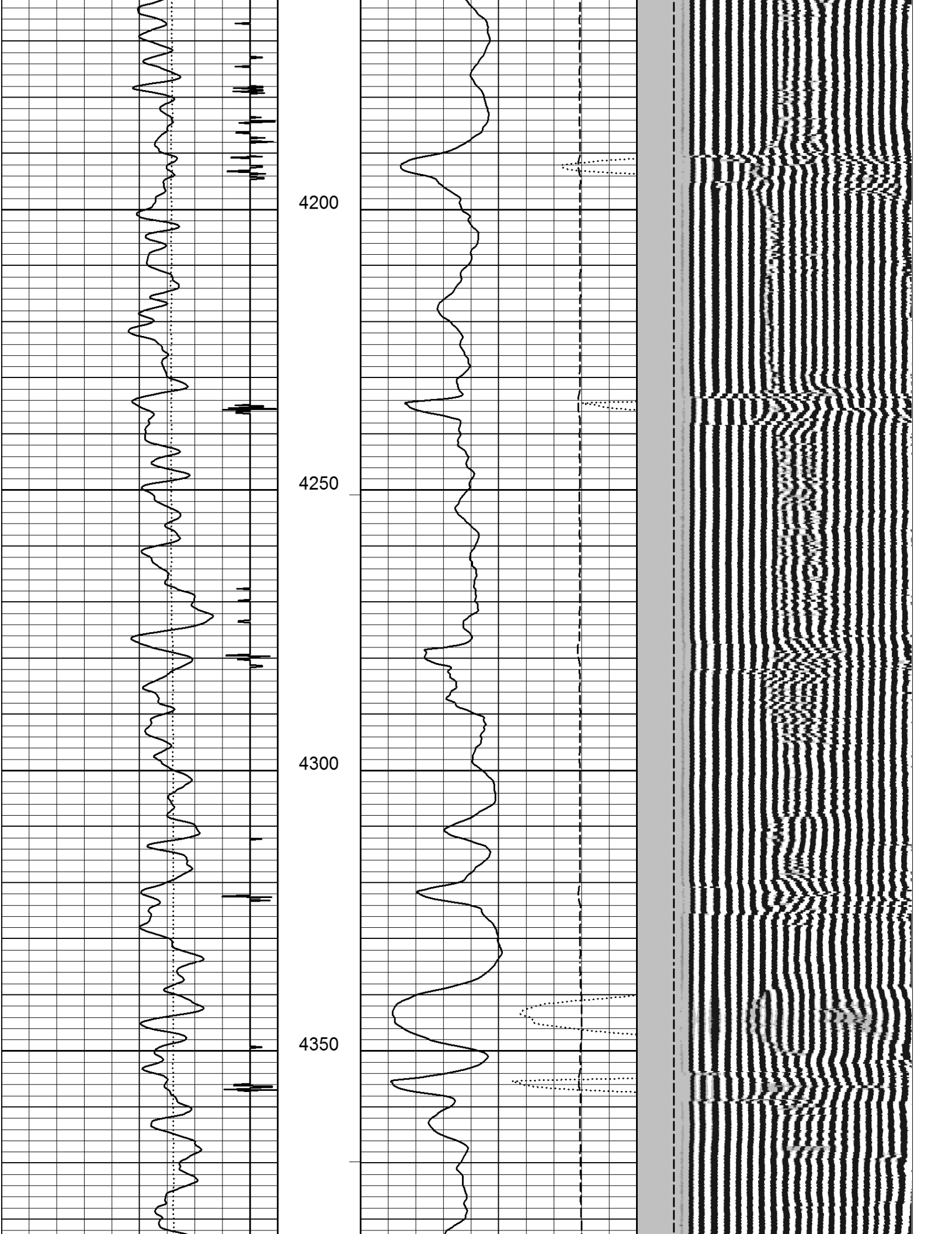
4000

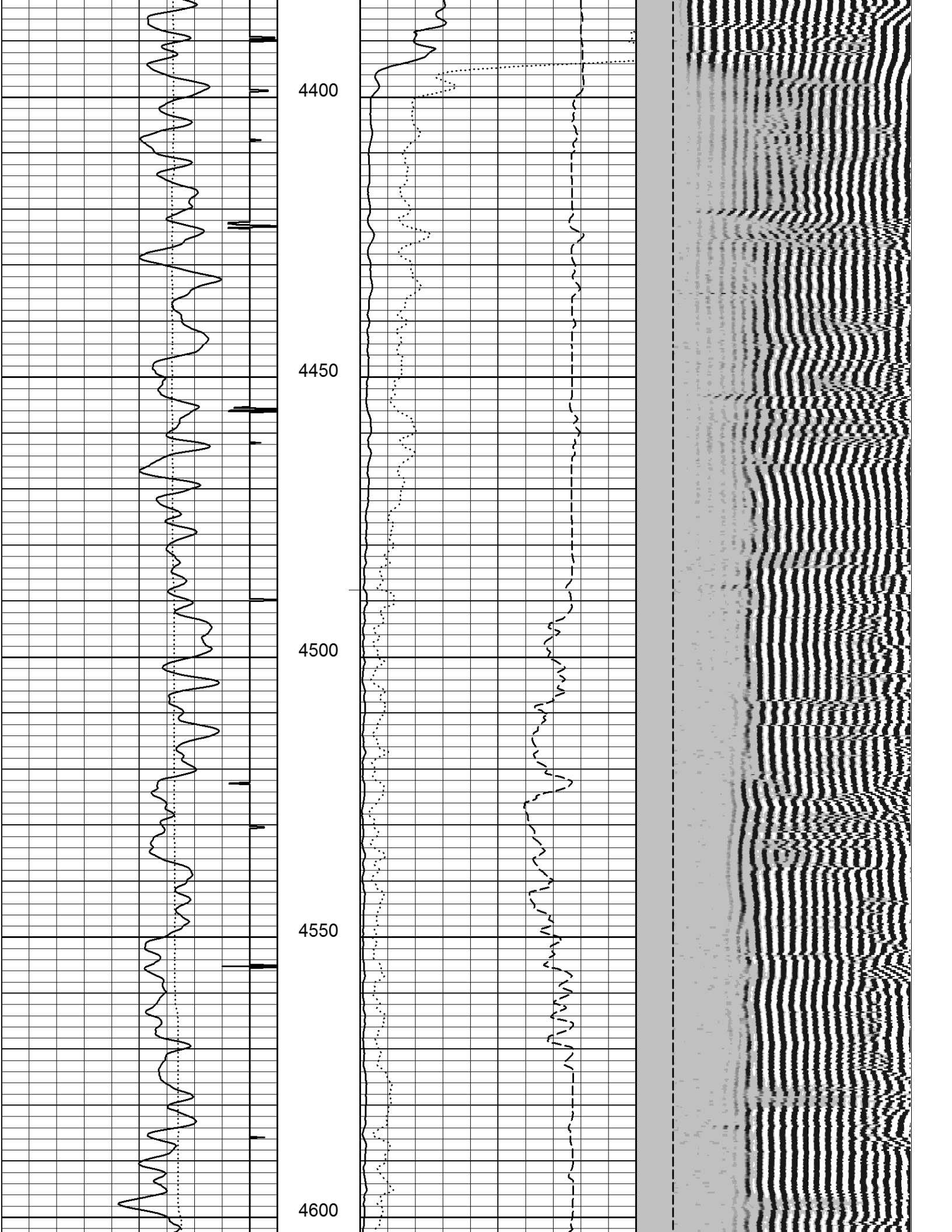
4050

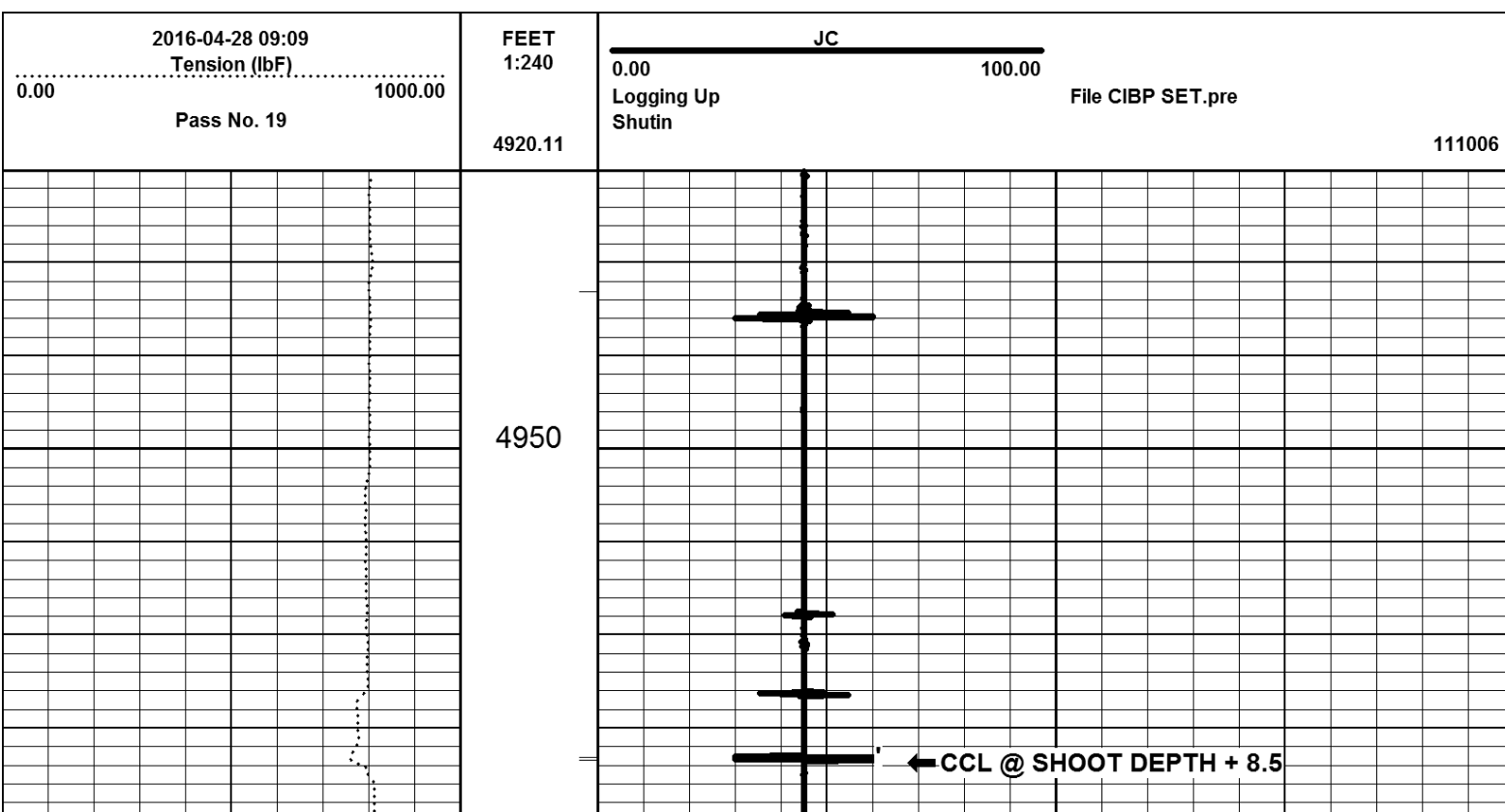
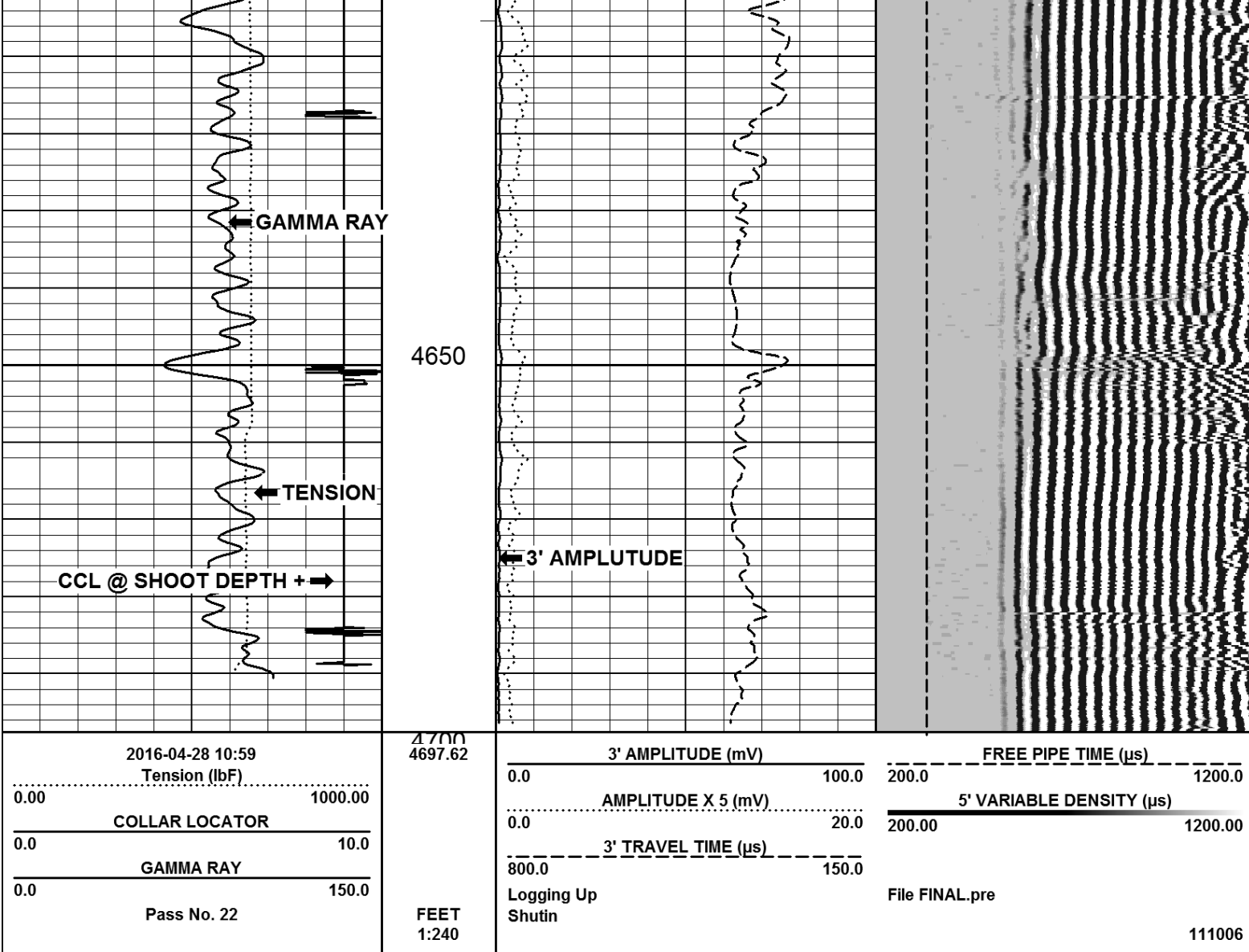
4100

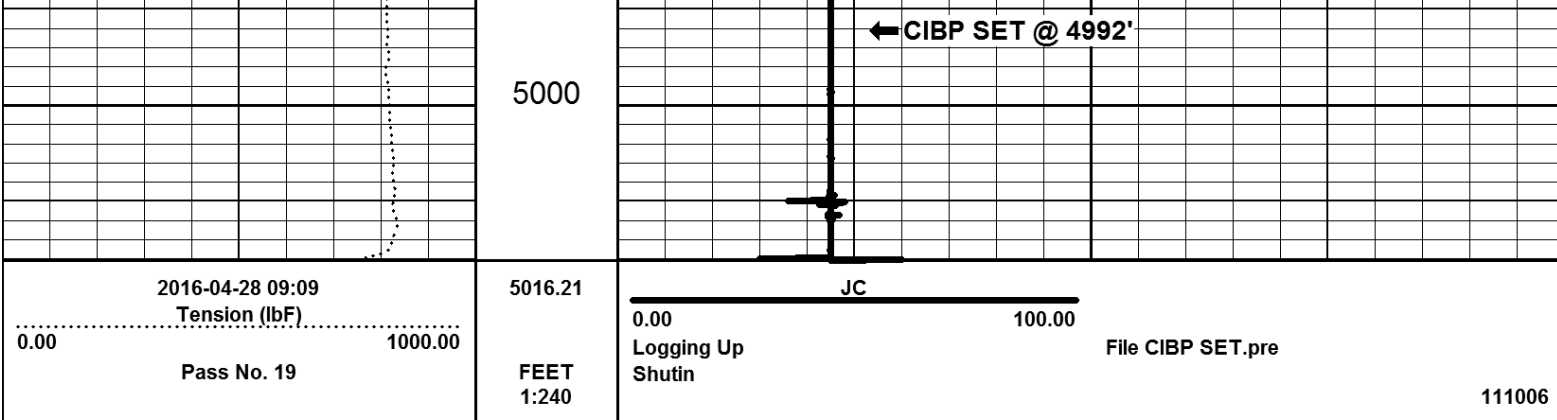
4150











Company ENERGY SEARCH COMPANY

Well TSUZUKI #5

Field

County ADAMS

State COLORADO

1/4'S SWNW SEC. 27 TWP. 1S RGE. 67W