

## WELLBORE DIAGRAM

**Subsequent PA**  
**Energy Search Company**  
**Tsuzuki #5**

SWNW Sec. 27, T1S, R67W  
SHL: 2048 FNL, 633 FWL  
Lat/Long: 39.9375/-104.881895  
Adams County CO  
05-001-07229

Directions: From 136th Ave at Yosemite, cont. 0.1  
mi S, cont. 0.1 mi E, cont. 0.3 mi S.

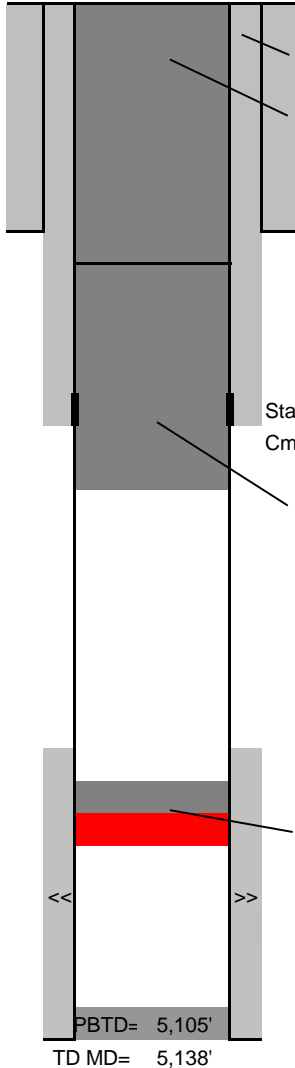
Spud date: 3/19/1977

Updated  
5/5/2016  
FCO

G.L.= 5086

K.B.= 5093

7



Cut off casings 20' below GL and weld on marker plate w/ well  
name, number & API number.

Place 48 sks cement from 530' to surface

8-5/8" 24# set at 200'  
Cmt'd w/ 200 sks to Surf.

Stage Tool at 1220' per CBL  
Cmt'd w/ 300 sks, TOC at surface

Placed 50 sks cement from 1275' to 530', tagged

Set CIBP at 4992' w/ 2 sks cement

SUSX 5042-5060', 30 holes

4.5", 10.5#, set 5105' (7-7/8" O.H.)  
Cmt'd w/ 200 sks

TOC: 4334'  
Per CBL

<<

>>

PBTD= 5,105'

TD MD= 5,138'