

Interim Reclamation Inspection

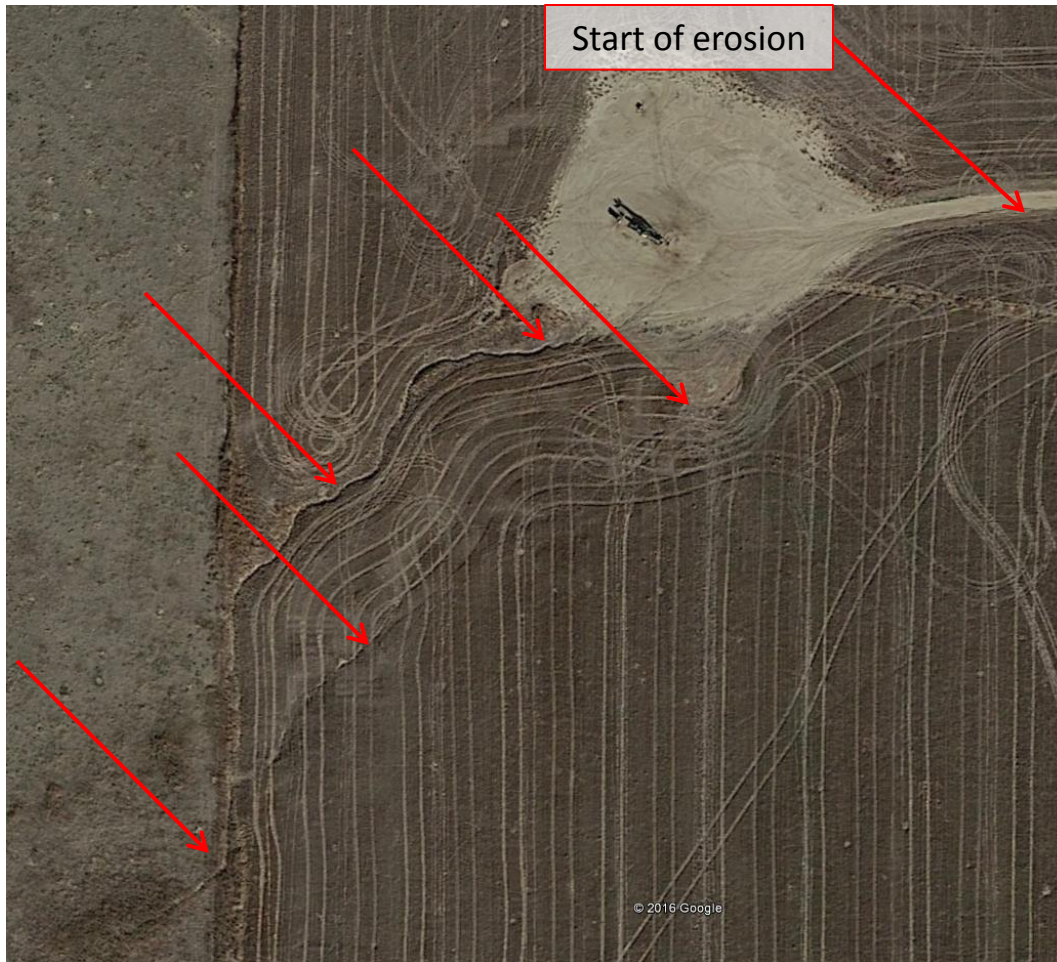


Photo 1. Google Earth aerial imagery taken 10/9/2015 illustrating erosion initiating from access road then continues onto well location and southwest onto adjacent lands.

Interim Reclamation Inspection



Photo 2. Photo taken of PR well sign for API #001-06321.

Interim Reclamation Inspection



Photo 3. Photo taken from the well location, facing East along access road. Need to control stormwater runoff that minimizes erosion and transport of sediment offsite per Rule 1002. Erosion and transport of sediment initiates from access road then continues onto well location and southwest onto adjacent lands.

Interim Reclamation Inspection



Photo 4. Photo taken from the well location, facing Southwest. Need to control stormwater runoff that minimizes erosion and transport of sediment offsite per Rule 1002. Erosion and transport of sediment initiates from access road then continues onto well location and southwest onto adjacent lands.

Interim Reclamation Inspection



Photo 5. Photo taken from southwest well location, facing Southwest. Need to control stormwater runoff that minimizes erosion and transport of sediment offsite per Rule 1002. Gully erosion forming at well perimeter and continue to enlarge further southwest.

Interim Reclamation Inspection



Photo 6. Photo taken southwest of well location, facing Southwest. Need to control stormwater runoff that minimizes erosion and transport of sediment offsite per Rule 1002. Gully erosion enlarging further southwest.

Interim Reclamation Inspection



Photo 7. Photo taken southwest of well location, facing Southwest. Need to control stormwater runoff that minimizes erosion and transport of sediment offsite per Rule 1002. Gully erosion enlarging further southwest.

Interim Reclamation Inspection



Photo 8. Photo taken southwest of well location, facing Southwest illustrating erosion occurring on adjacent lands. Need to control stormwater runoff that minimizes erosion and transport of sediment offsite per Rule 1002.

Interim Reclamation Inspection



Photo 9. Photo taken from mid-way point of gully erosion measuring an average depth of 24".