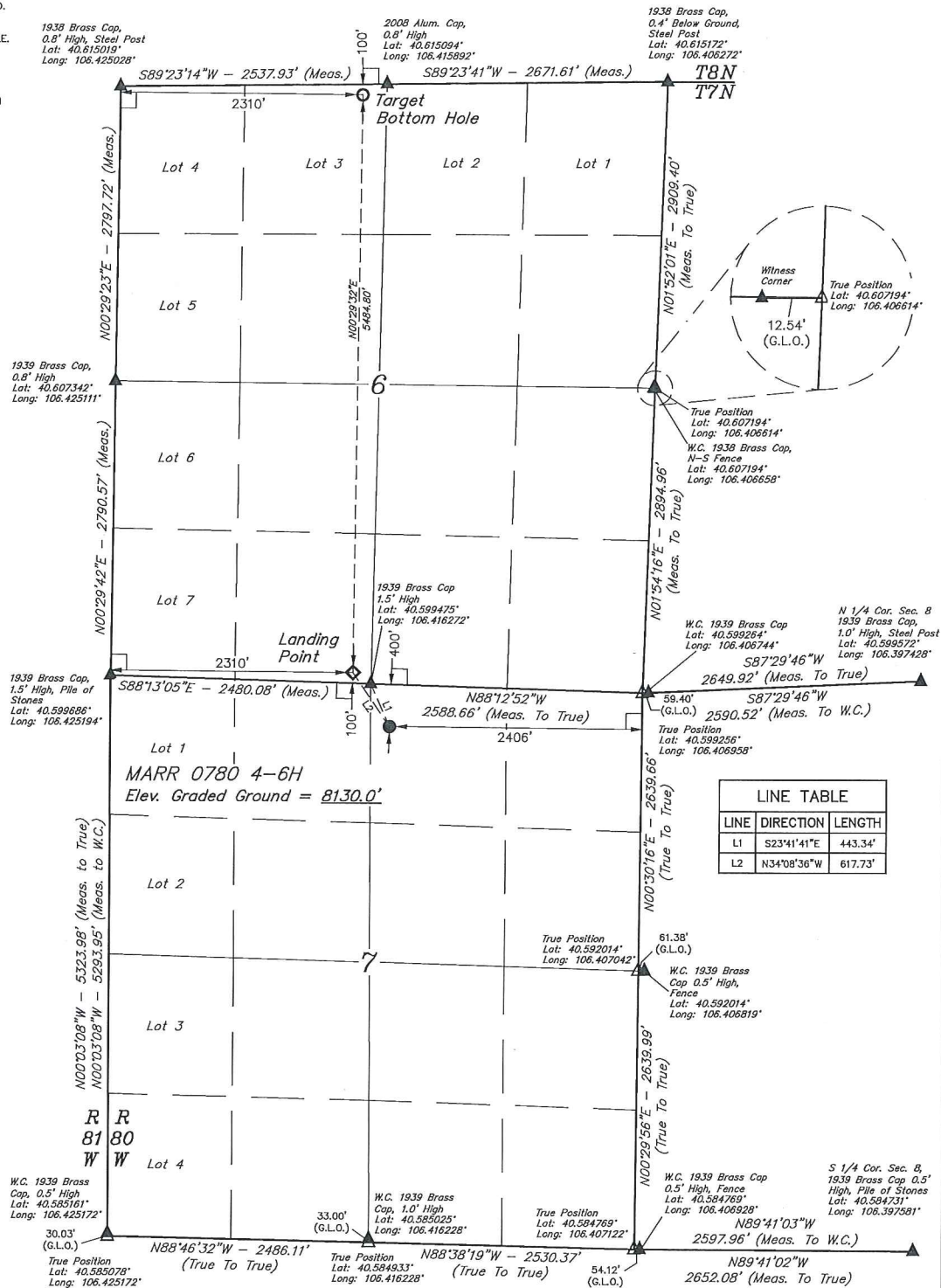


T7N, R80W, 6th P.M.

- 1938 Brass Cap,
0.4' Below Ground,
Steel Post
Lat: 40.615172°
Long: 106.406272°



LINE TABLE		
LINE	DIRECTION	LENGTH
L1	S23°41'41"E	443.34'
L2	N34°08'36"W	617.73'

NAD 83 (SURFACE LOCATION)	NAD 83 (LANDING POINT)	NAD 83 (TARGET BOTTOM HOLE)
LATITUDE = 40°35'54.10" (40.598361)	LATITUDE = 40°35'59.15" (40.599786)	LATITUDE = 40°36'35.33" (40.614814)
LONGITUDE = 106°25'54.16" (106.415601)	LONGITUDE = 106°24'58.25" (106.416878)	LONGITUDE = 106°25'50.16" (106.416711)
NAD 27 (SURFACE LOCATION)	NAD 27 (LANDING POINT)	NAD 27 (TARGET BOTTOM HOLE)
LATITUDE = 40°35'54.16" (40.598383)	LATITUDE = 40°35'59.23" (40.599786)	LATITUDE = 40°36'53.41" (40.614836)
LONGITUDE = 106°25'54.16" (106.415044)	LONGITUDE = 106°24'58.25" (106.416292)	LONGITUDE = 106°24'58.03" (106.416125)
STATE PLANE NAD 83 (CO. NORTH)	STATE PLANE NAD 83 (CO. NORTH)	STATE PLANE NAD 83 (CO. NORTH)
N: 1462137.59 E: 2745738.13	N: 1462652.14 E: 2745396.78	N: 1468133.71 E: 2745499.65
STATE PLANE NAD 27 (CO. NORTH)	STATE PLANE NAD 27 (CO. NORTH)	STATE PLANE NAD 27 (CO. NORTH)
N: 462135.48 E: 1745894.36	N: 462650.03 E: 1745553.01	N: 468131.63 E: 1745655.83



UINTAH
ENGINEERING & LAND SURVEYING

CERTIFICATE
 ABOVE STATE WAS PREPARED AND FIELD
 MADE BY ME OR UNDER MY SUPERVISION
 AND IS ACCURATE TO THE BEST OF MY
 KNOWLEDGE

[Signature] 28285

REGISTERED LAND SURVEYOR
 REGISTRATION NO. 28285
 STATE OF OREGON

05-04-16

REV: 2 05-04-16 M.D. (MOVED LANDING POINT)

MARR 0780 4-6H
NW 1/4 NE 1/4, SECTION 7, T7N, R80W, 6th P.M.
JACKSON COUNTY, COLORADO

SURVEYED BY	C.M., G.W.	04-18-16	SCALE
DRAWN BY	M.D.	04-27-16	1" = 1000'

WELL LOCATION PLAT