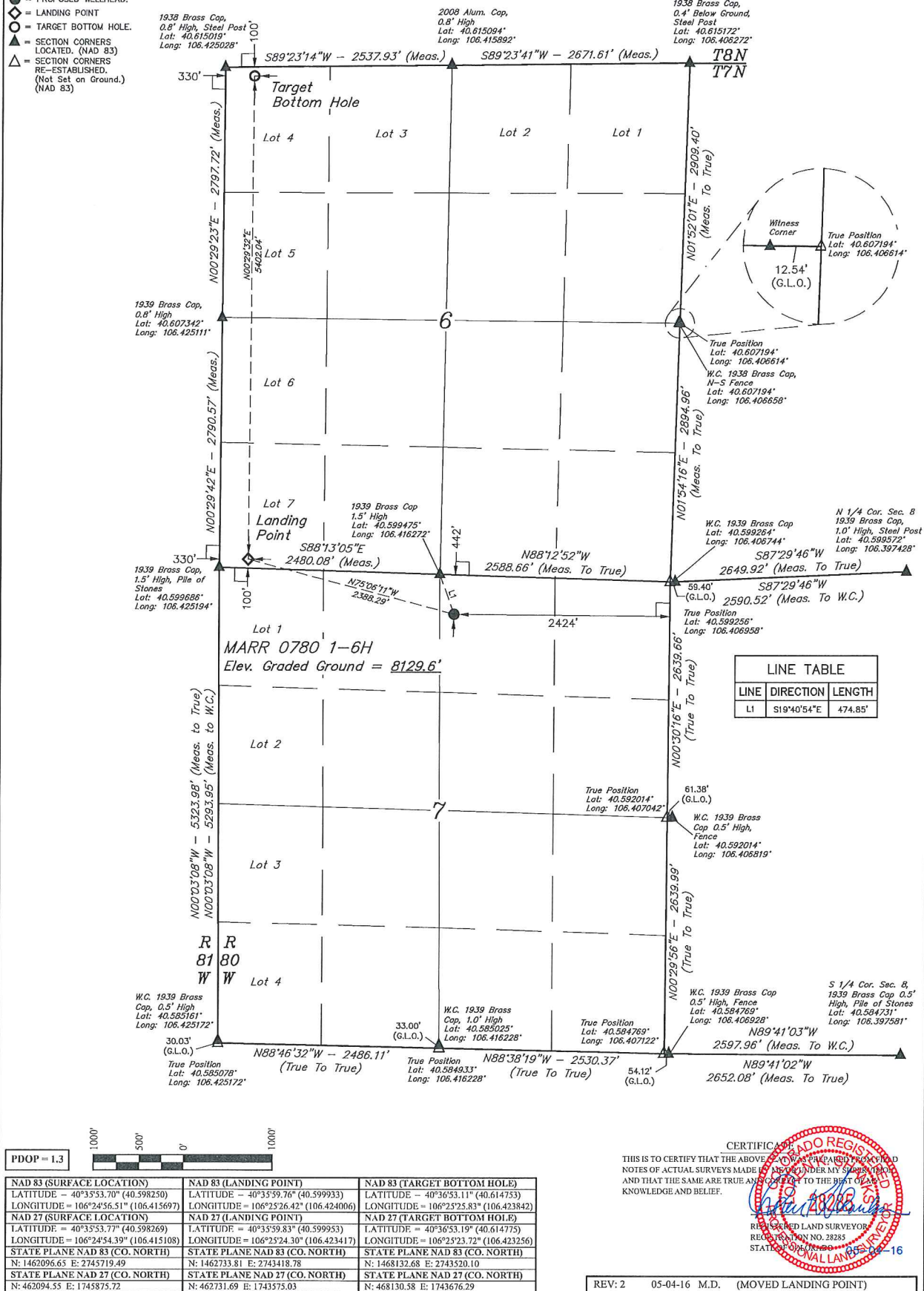


T7N, R80W, 6th P.M.

- 1938 Brass Cap,
0.8' High, Steel Po.
Lot: 40.615019*
Long: 106.425028*

2008 Alum. Cop,
0.8' High
Lat: 40.615094°
Long: 106.415892°

1938 Brass Cap,
0.4' Below Ground,
Steel Post
Lat: 40.615172°
Long: 106.406272°



BASIS OF BEARINGS
BASIS OF BEARINGS IS A G.P.S. OBSERVATION

BASIS OF ELEVATION
SPOT ELEVATION AT THE SOUTHEAST CORNER OF SECTION 29, T7N, R80W, 6th P.M. TAKEN FROM THE COALMONT QUADRANGLE, COLORADO, JACKSON COUNTY, 7.5 MINUTE QUAD. (TOPOGRAPHIC MAP) PUBLISHED BY THE UNITED STATES DEPARTMENT OF THE INTERIOR, GEOLOGICAL SURVEY. SAID ELEVATION IS MARKED AS BEING 8156 FEET.

UELS, LLC
Corporate Office * 85 South 200 East
Vernal, UT 84078 * (435) 789-1017



CERTIFICATE

THIS IS TO CERTIFY THAT THE ABOVE LIST WAS PREPARED FROM FIELD NOTES OF ACTUAL SURVEYS MADE BY ME OR UNDER MY SUPERVISION, AND THAT THE SAME ARE TRUE AND CORRECT TO THE BEST OF MY KNOWLEDGE AND BELIEF.

REGISTERED LAND SURVEYOR
REGISTRATION NO. 28285
STATE OF OREGON

REV: 2 05-04-16 M.D. (MOVED LANDING POINT)

SandRidge Exploration & Production, LLC
MARR 0780 1-6H
NW 1/4 NE 1/4, SECTION 7, T7N, R80W, 6th P.M.
JACKSON COUNTY, COLORADO

SURVEYED BY	C.M., G.W.	04-18-16	SCALE
DRAWN BY	M.D.	04-27-16	1" = 1000'

WELL LOCATION PLAT