



# Cement Bond Log

Company <b>Exxon Mobile</b>		State	CO.
Well	PCU 25-21	Field	Piceance Creek
County	Rio Blanco	County	<b>Rio Blanco</b>
Location:	API # :	State	<b>CO.</b>
Permanent Datum	SEC	TWP	RGE
Log Measured From	Elevation		
Drilling Measured From	Other Services		

Date of Service	June-10-2010			
Run Number	Three			
Depth Driller or PBTD	N/A			
Depth Logger	2170'			
Bottom Log Interval	2170'			
Top Log Interval	Surface			
Open Hole Size	N/A			
Type Fluid	Water			
Fluid Level	Full			
Fluid Density	8.4#			
Max. Recorded Temperature	N/A			
Max. Wellhead Pressure	0			
Wellhead Connection	7 1/16" 5K Flange			
Estimated Cement Top	See Log			
Unit Number	P-75			
Wireline Size	7/32"			
Location	Grand Junction			
Recorded By	R.Hall			
Witnessed By	Zach Simpson			
Tubing Record	Size	VW/Ft	Top	Bottom
Surface Casing				
Production Casing	5.5	14#	Surface	N/A
Liner Record				

<<< Fold Here >>>

All interpretations are opinions based on inferences from electrical or other measurements and Perf-O-Log cannot and does not guarantee the accuracy or correctness of any interpretation, and Perf-O-Log will not, except in the case of gross or willful negligence on our part, be liable or responsible for any loss, costs, damages, or expenses incurred or sustained by anyone resulting from any interpretation made by any of our officers, agents or employees. These interpretations are also subject to Perf-O-Log's general terms and conditions set out in our current Price Schedule.

## Comments

THANK YOU FOR USING PERF-O-LOG

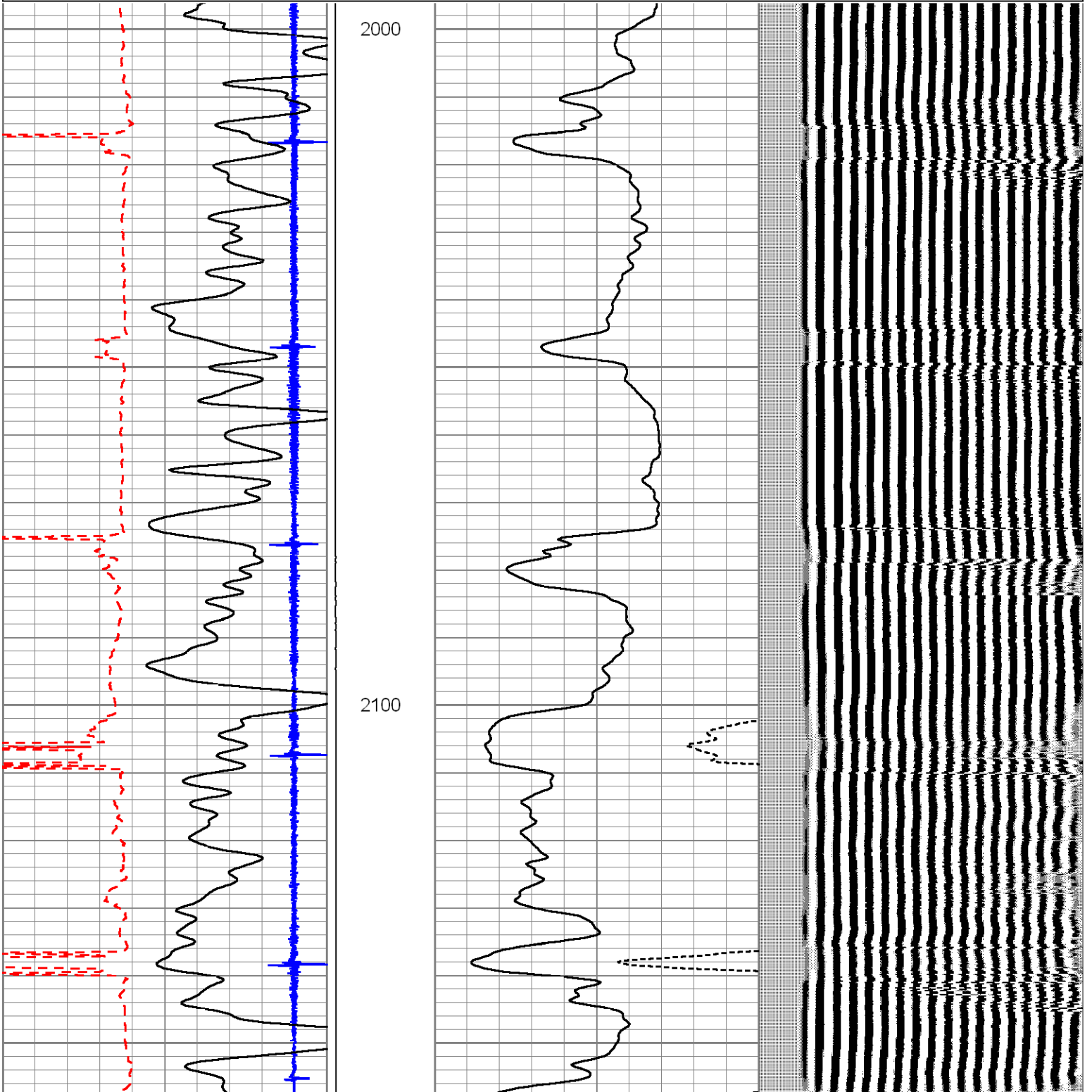
Your Perf-O-Log Crew Engineer: Richard Hall Operator: Ben Newman Operator: Chris Abraham Operator: Jim Hudson	Tool Data - Services Serial Number
---	---------------------------------------

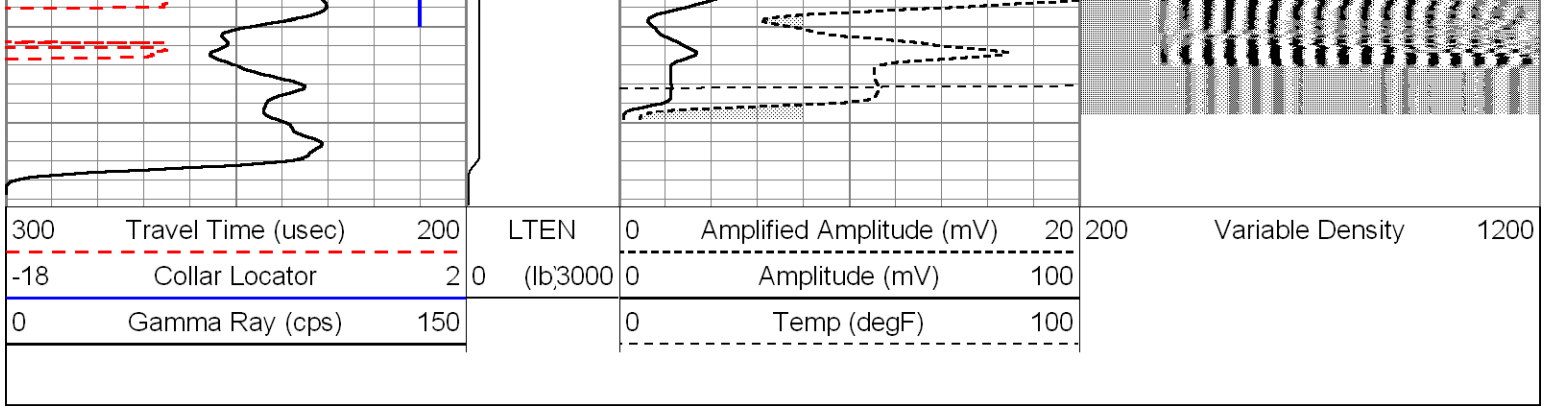


# Repeat Section

Database File: pcu 25-21.db  
 Dataset Pathname: pass4  
 Presentation Format: cbltemp  
 Dataset Creation: Thu Jun 10 16:54:11 2010 by Log Std Casedhole 07122  
 Charted by: Depth in Feet scaled 1:240

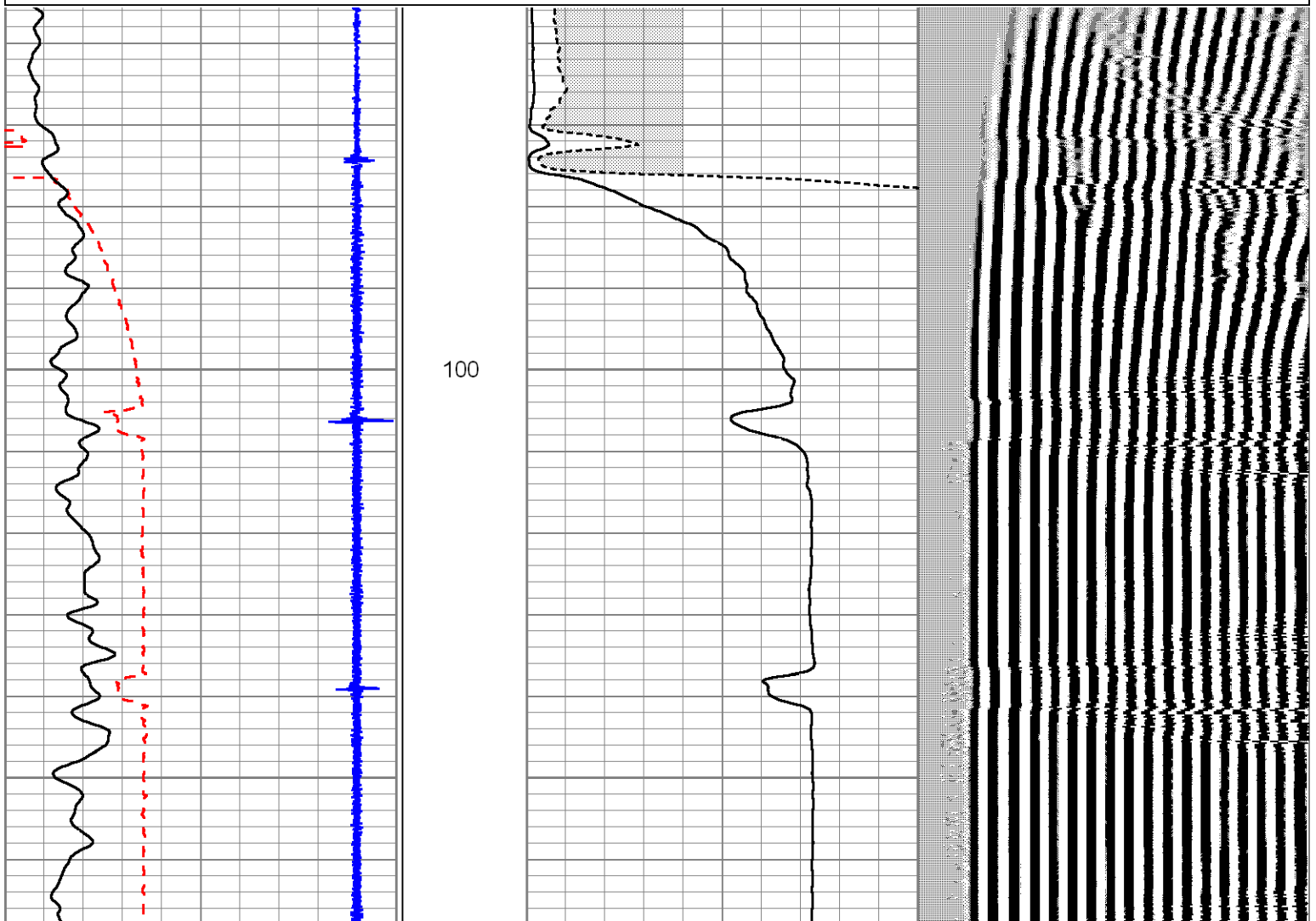
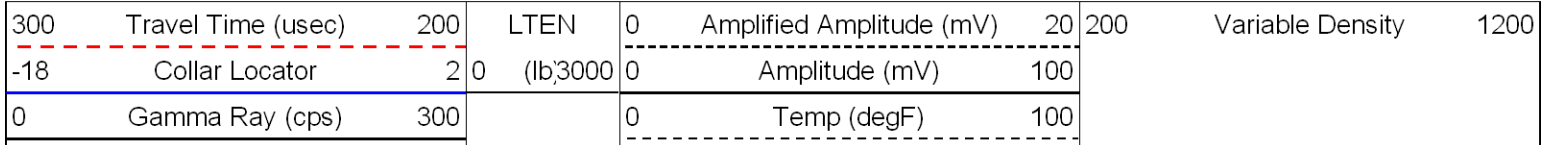
300	Travel Time (usec)	200	LTEN	0	Amplified Amplitude (mV)	20	200	Variable Density	1200
-18	Collar Locator	2	0	(lb)3000	0	Amplitude (mV)	100		
0	Gamma Ray (cps)	150			0	Temp (degF)	100		

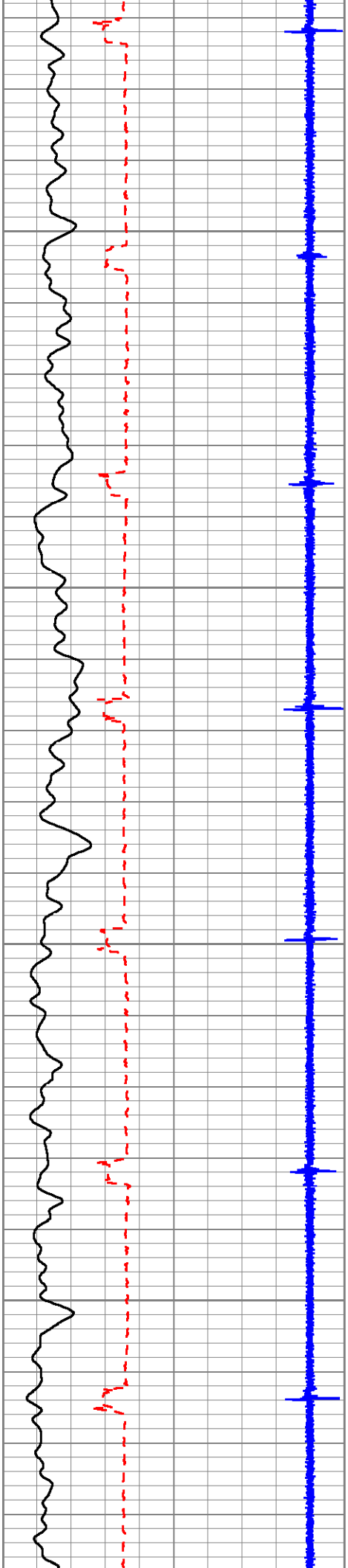




# Main Pass

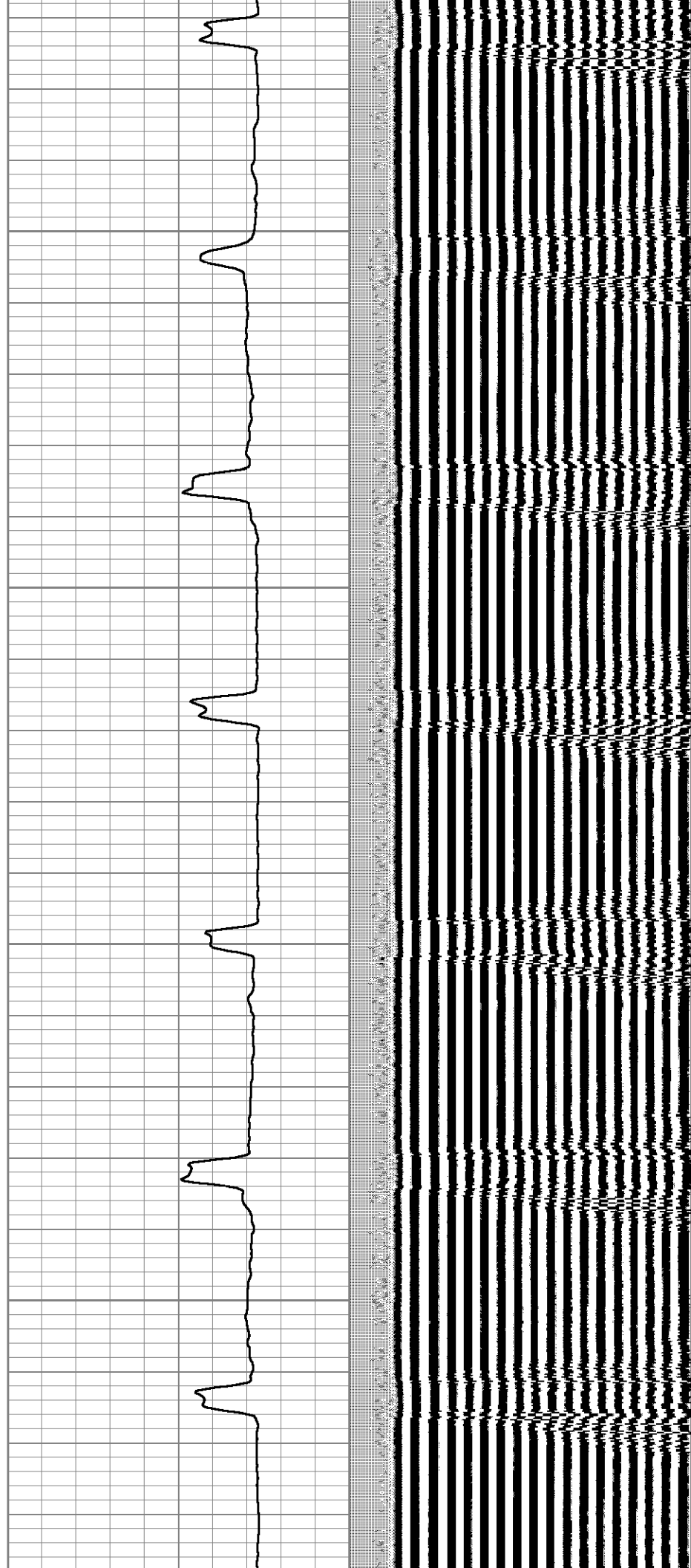
Database File: pcu 25-21.db  
 Dataset Pathname: pass5  
 Presentation Format: cbltemp  
 Dataset Creation: Thu Jun 10 16:59:07 2010 by Log Std Casedhole 07122  
 Charted by: Depth in Feet scaled 1:240

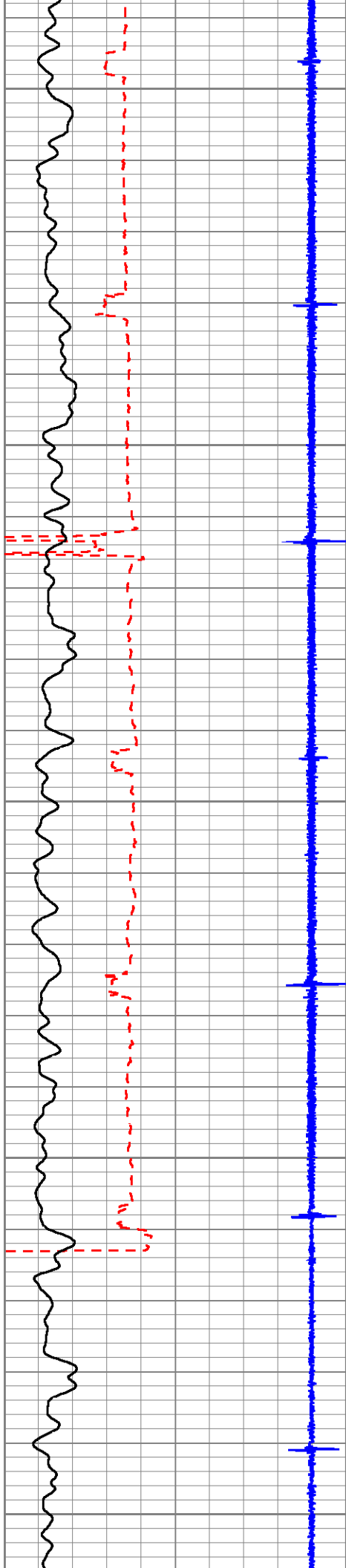




200

300

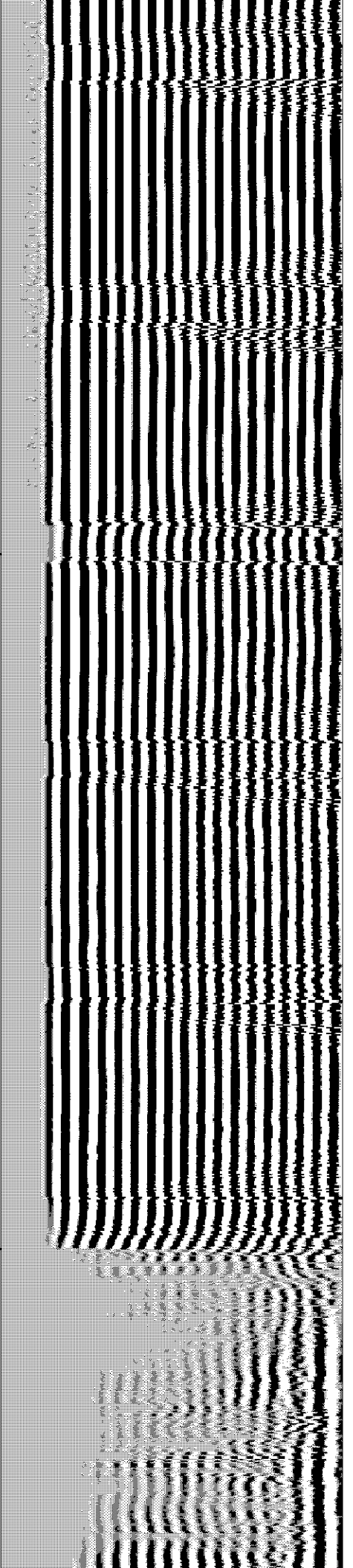
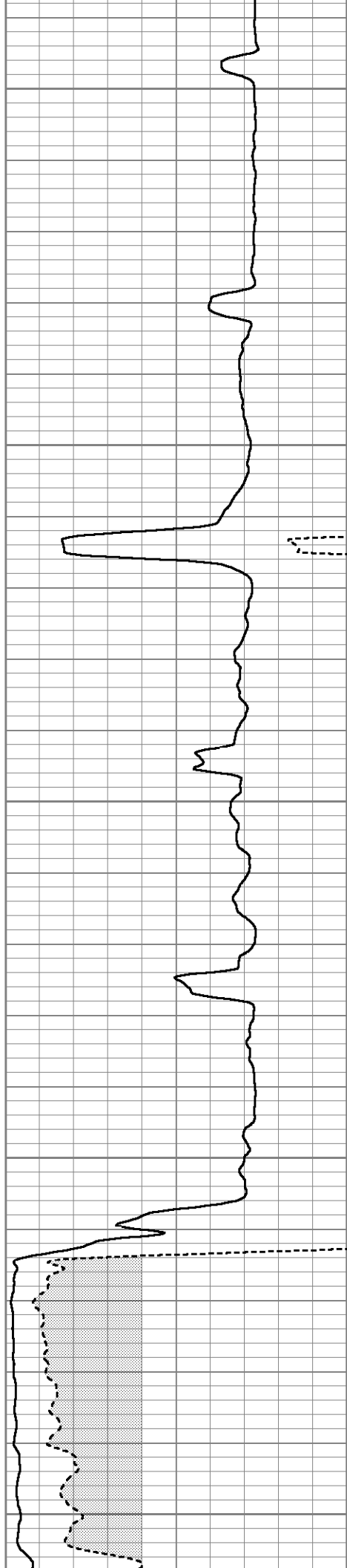


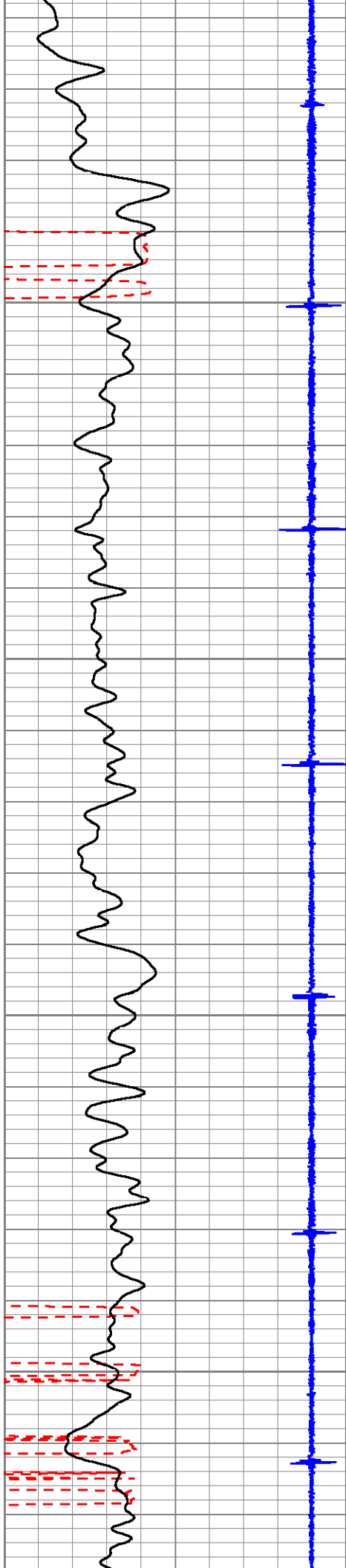


400

500

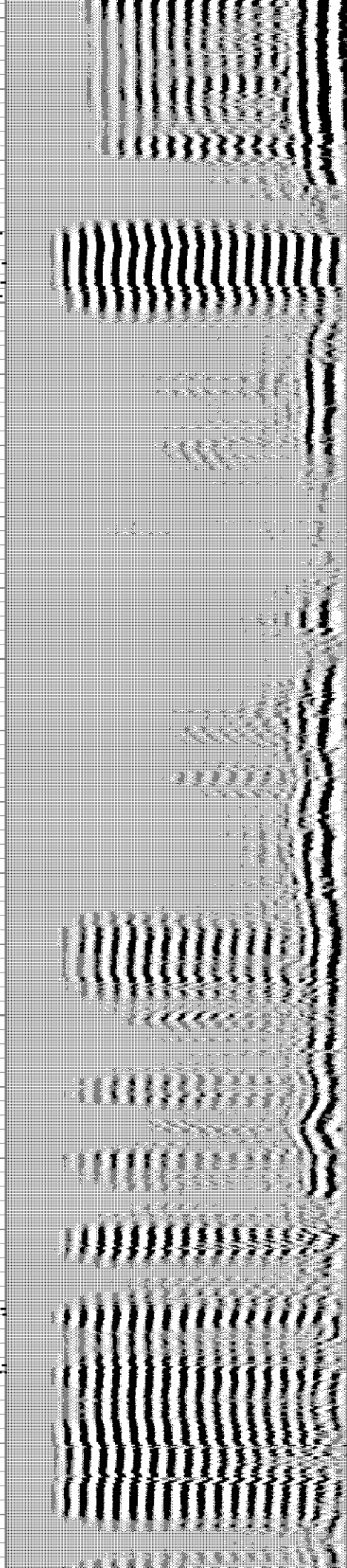
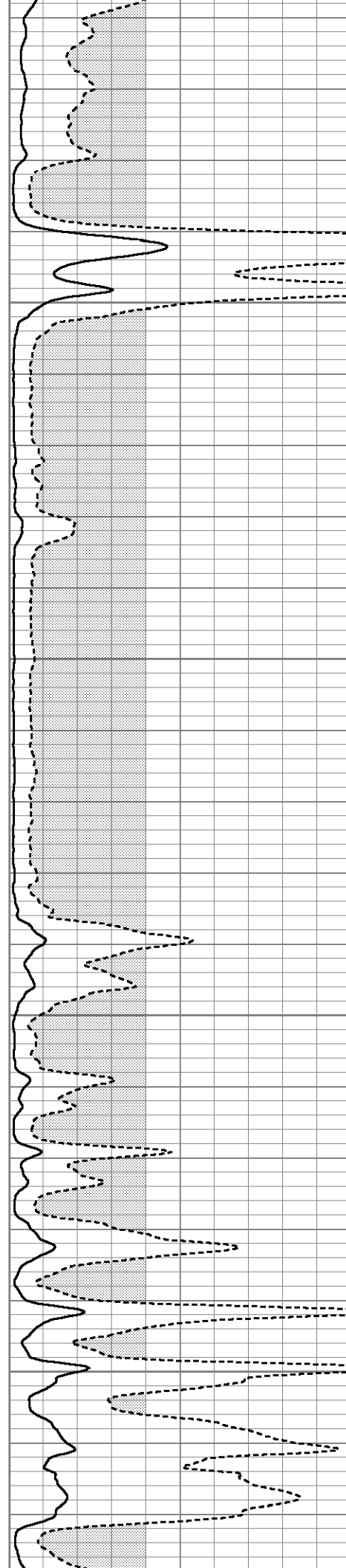
600

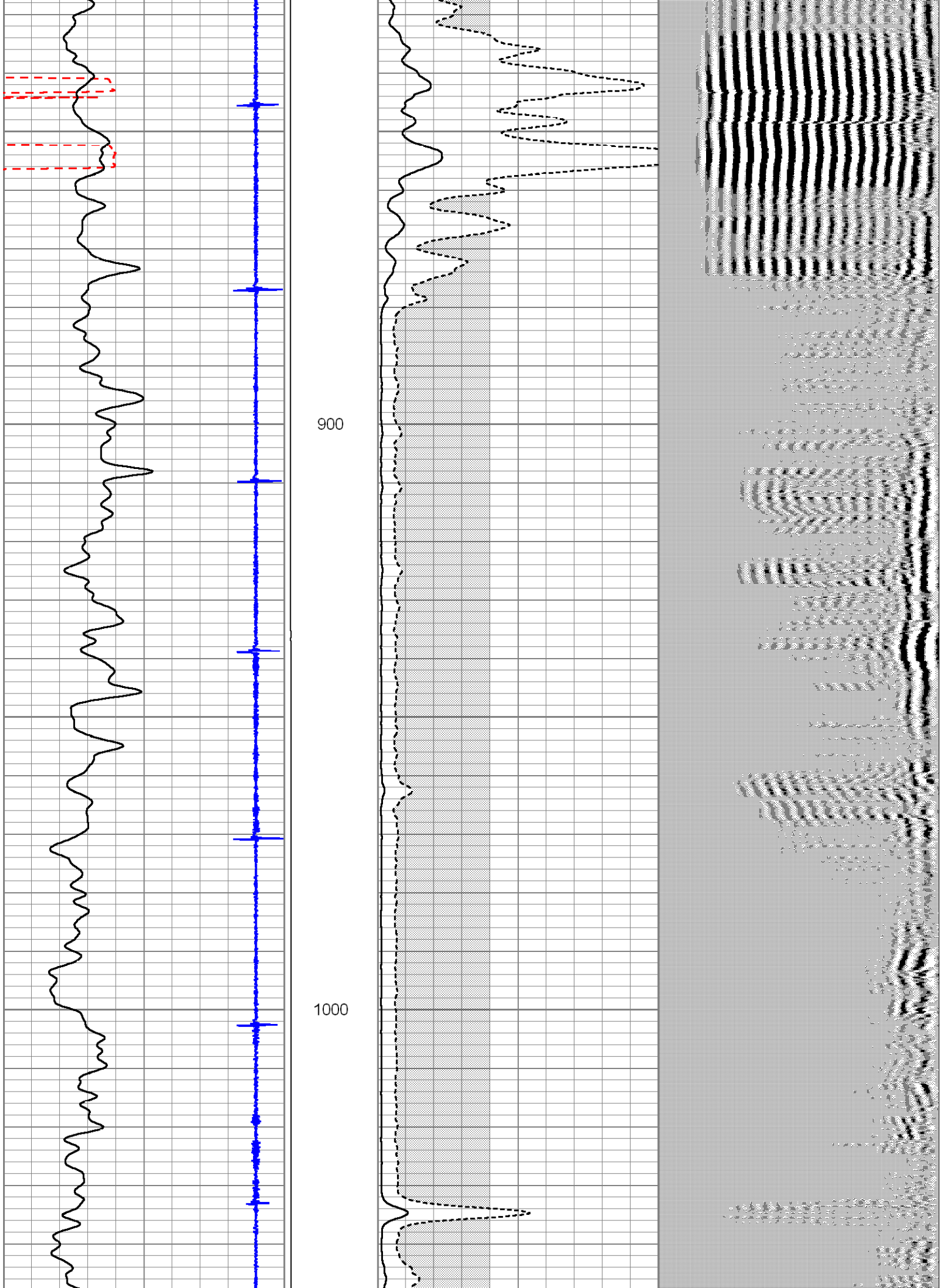


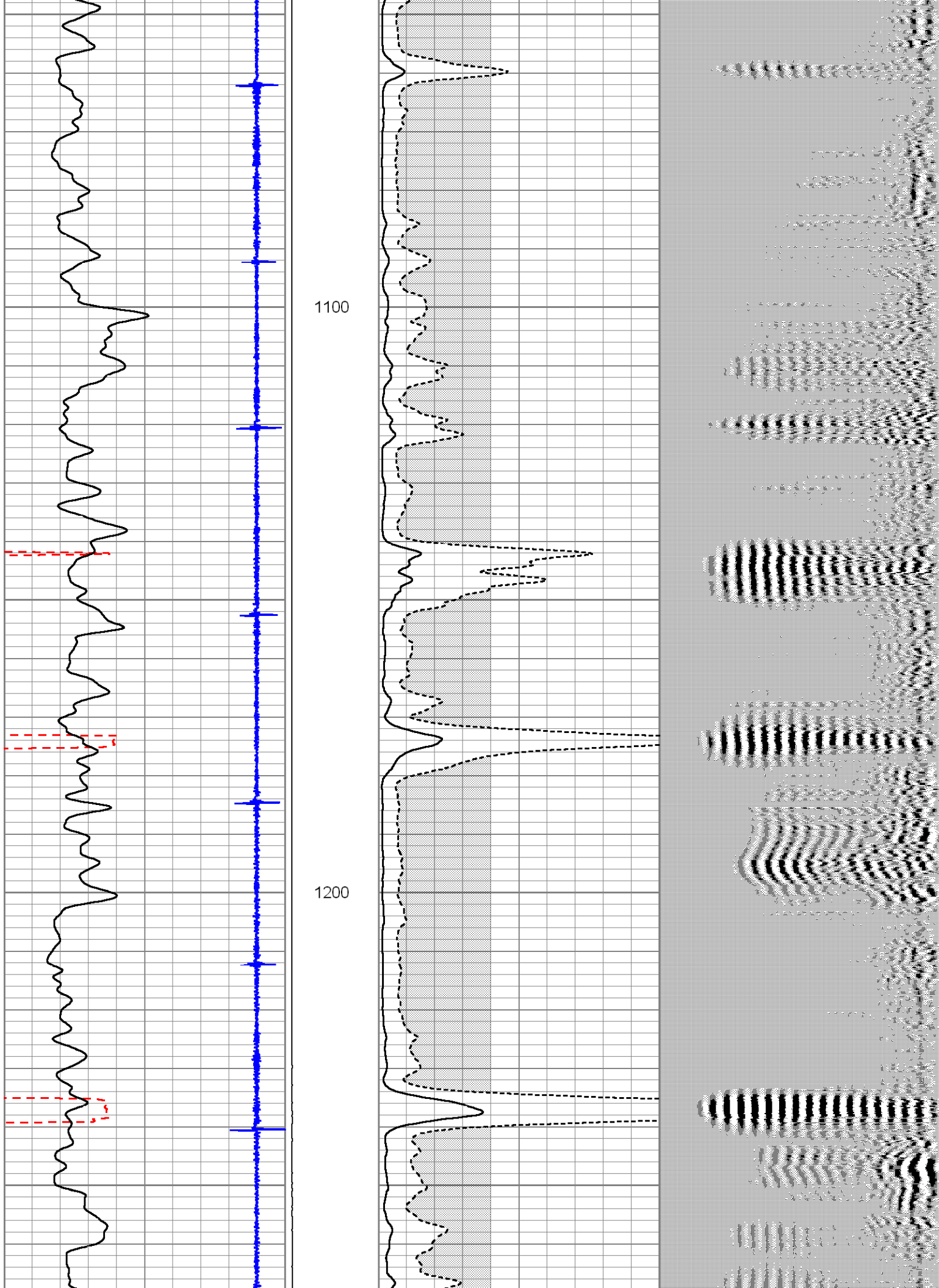


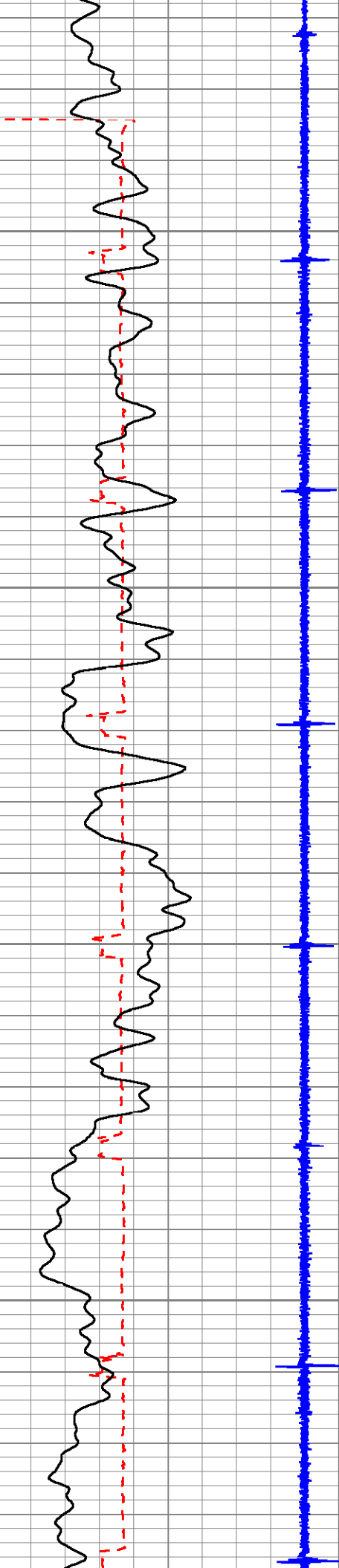
700

800



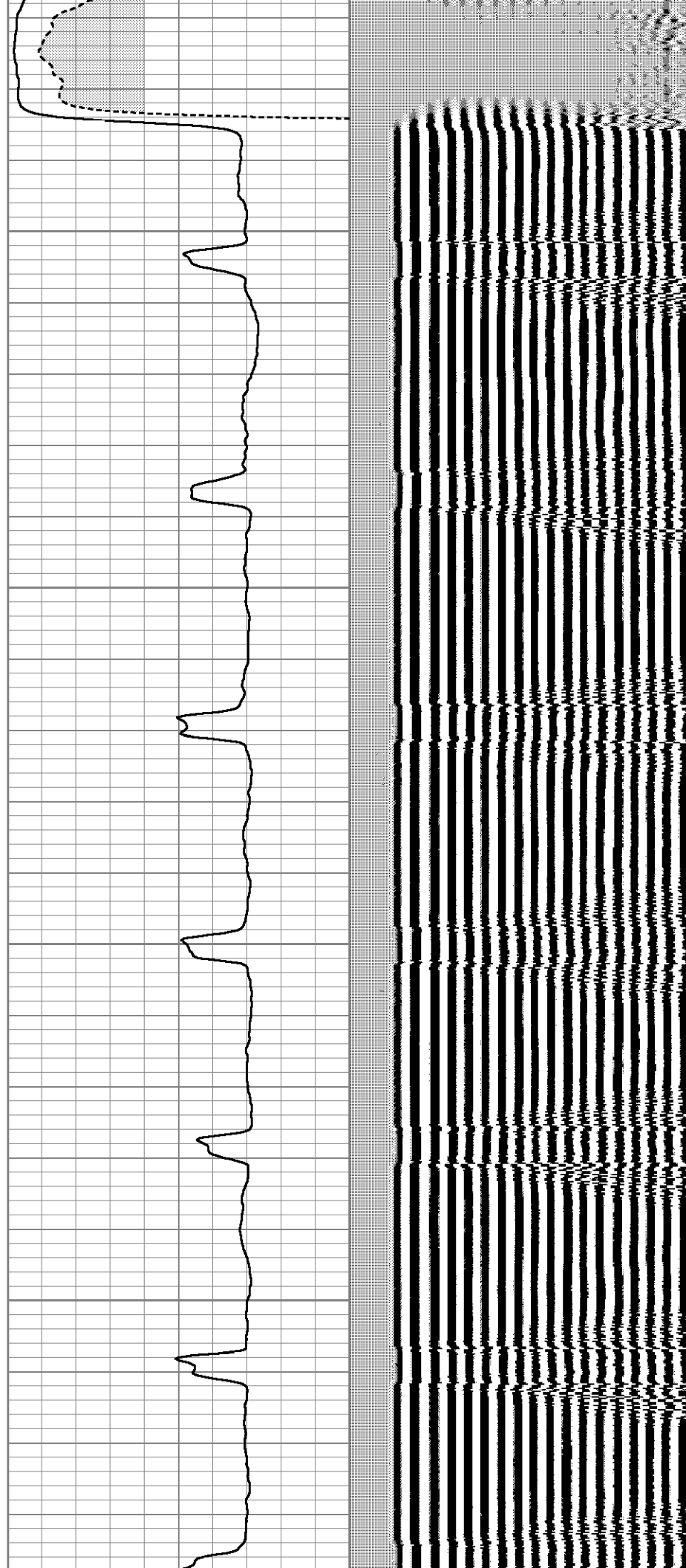


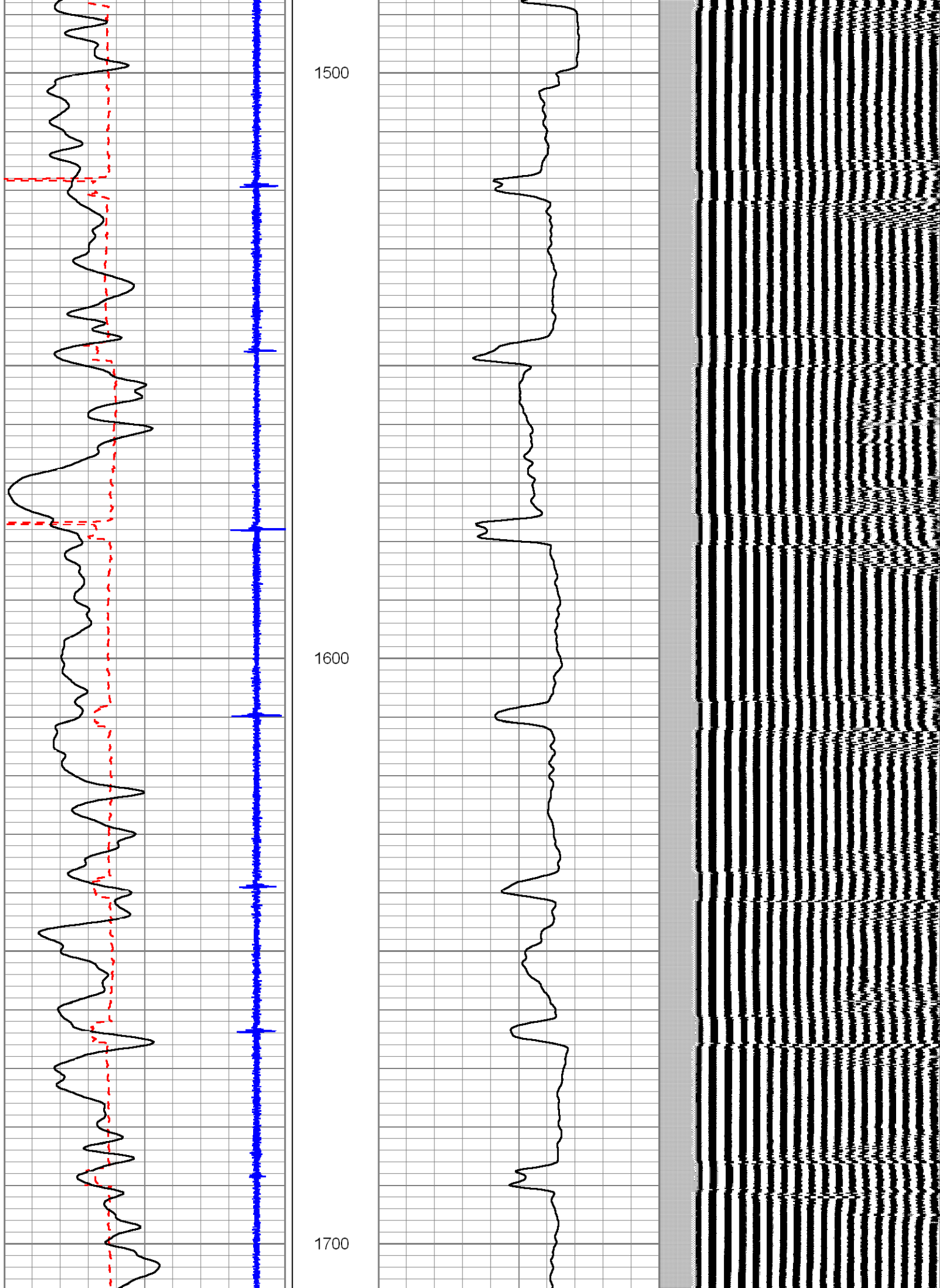


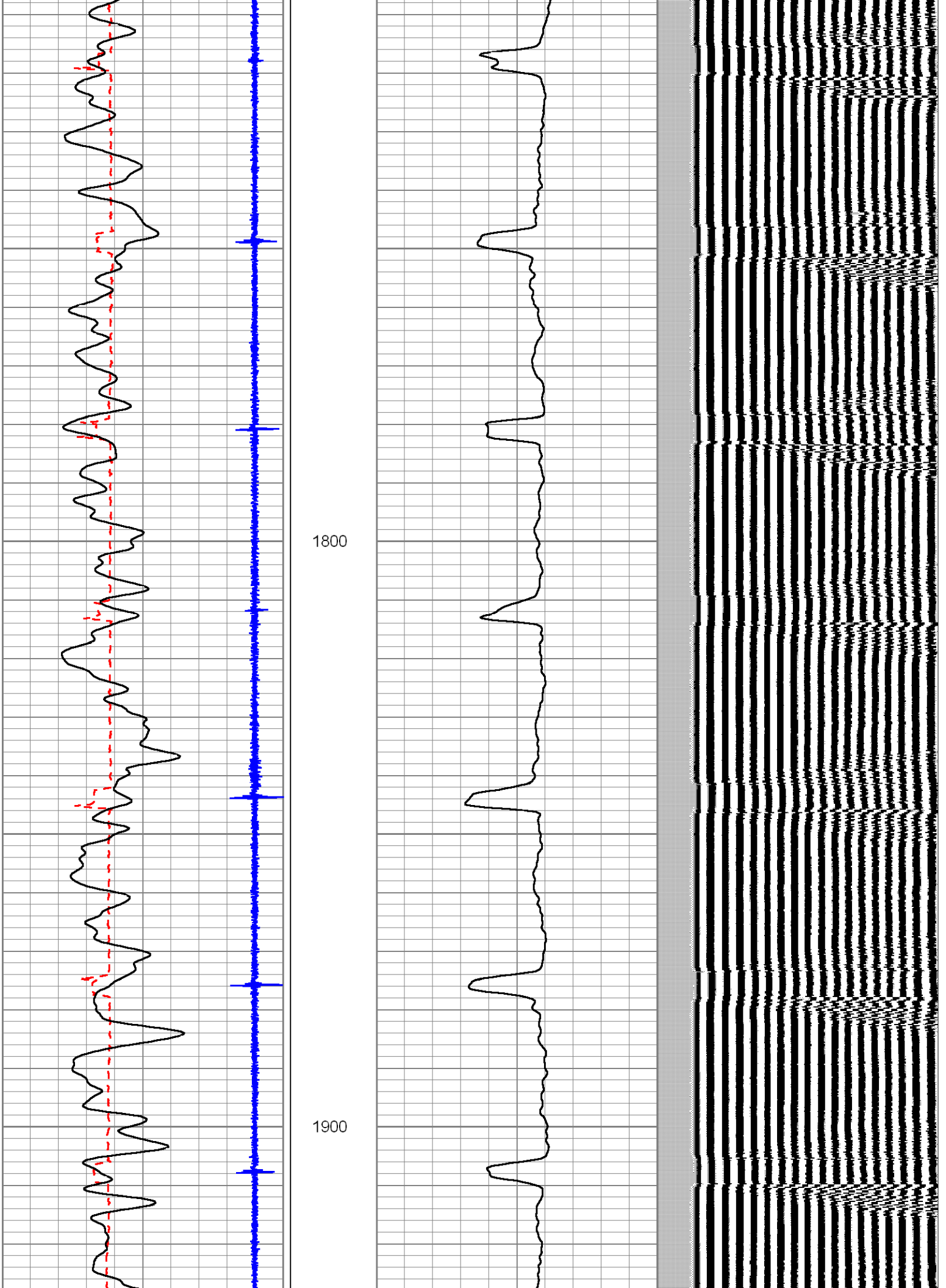


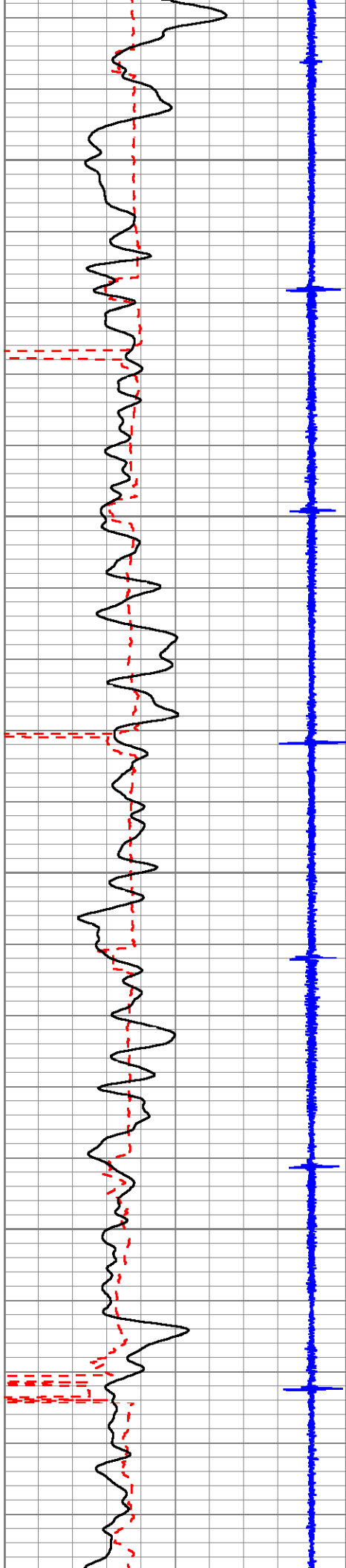
1300

1400



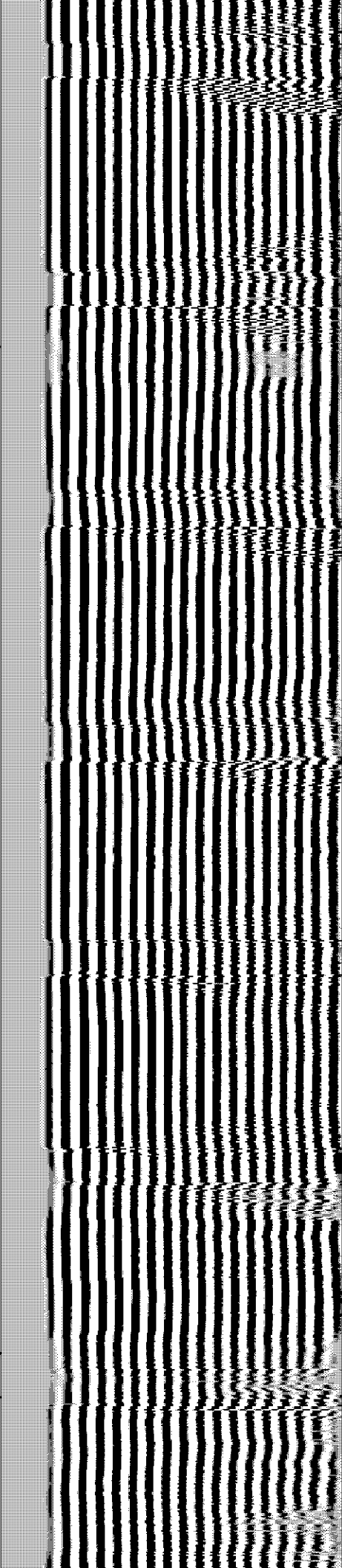
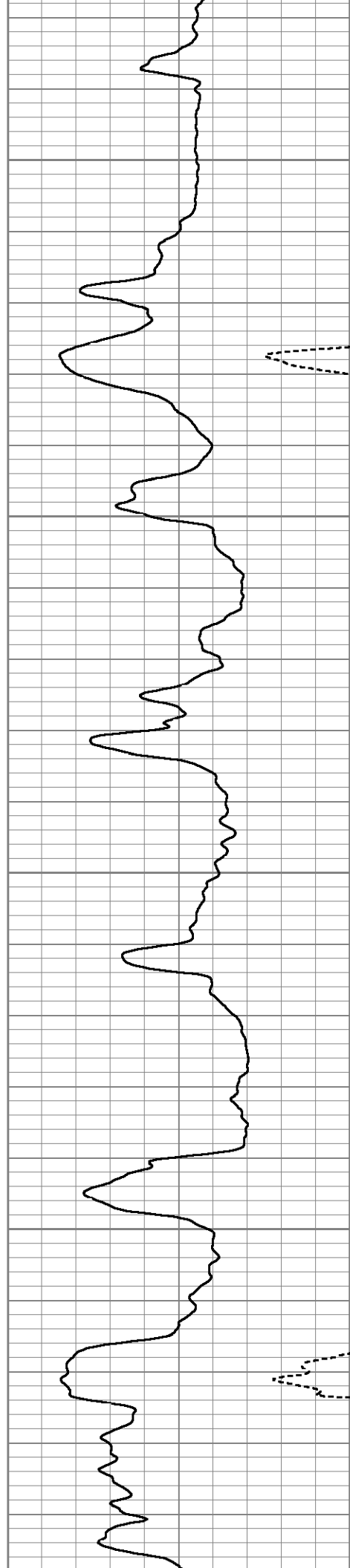


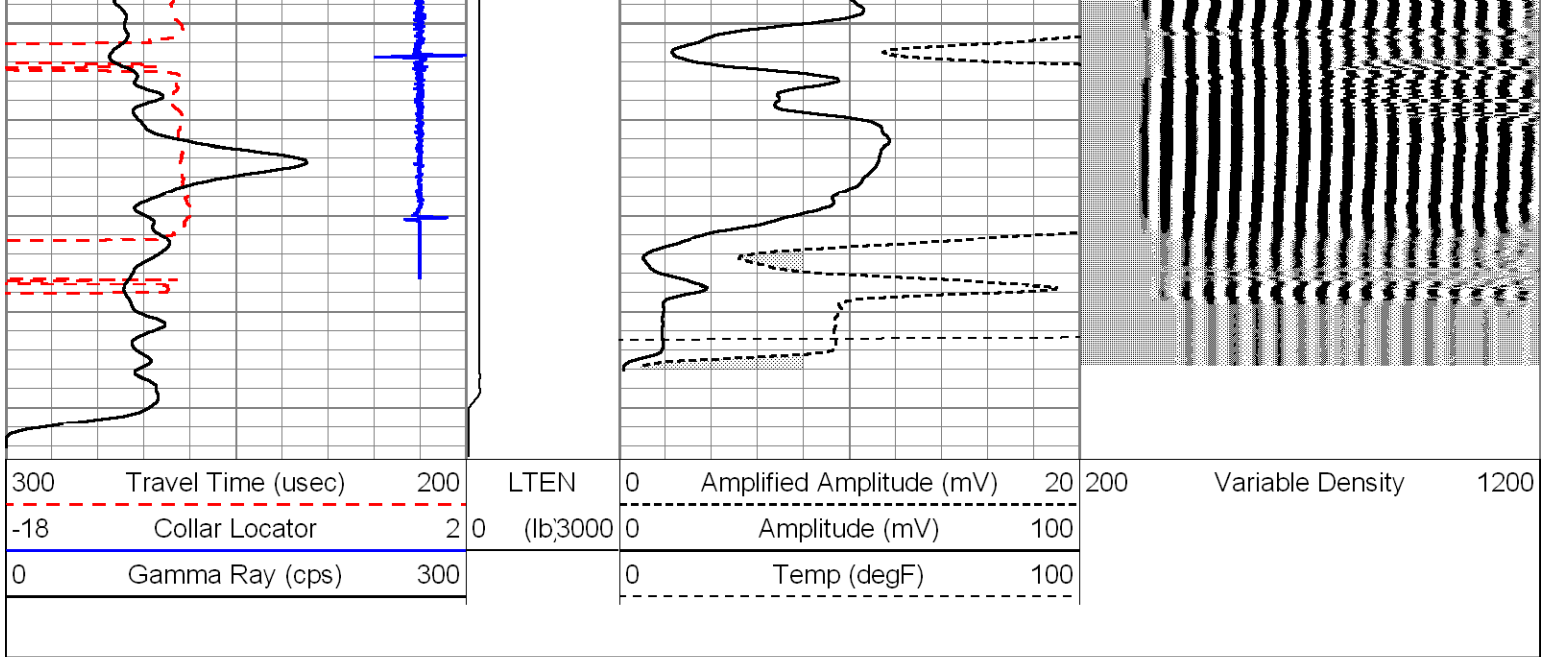




2000

2100





Sensor	Offset (ft)	Schematic	Description	Len (ft)	OD (in)	Wt (lb)	
CCL	18.71		CCL-MTEKCO (14) 2 3/4" TEKCO CCL	1.83	2.75	10.00	
			comp 2 3/4" COMPUTALOG BOW SPRING	2.64	2.75	10.00	
TEMP	12.78						
WVF3FT	10.62						
WVF5FT	9.62						
WVFTEMP	6.33		CBL-2.75TEKCONEW (CBLTEMP) 2 3/4" TEKCO 400 DEG. (DUAL REC.) CBL TEMP TOOL	9.08	2.75	90.00	

GR	3.72		GR-MTEKCO (14) 2 3/4" TEKCO GR	3.69	2.75	20.00
			comp 2 3/4" COMPUTALOG BOW SPRING	2.64	2.75	10.00
Dataset: pcu 25-21.db: field/well/run1/pass5 Total Length: 19.88 ft Total Weight: 140.00 lb O.D.: 2.75 in						

Calibration Report

Database File: pcu 25-21.db  
Dataset Pathname: pass5  
Dataset Creation: Thu Jun 10 16:59:07 2010 by Log Std Casedhole 07122

Gamma Ray Calibration Report

Serial Number: 14  
Tool Model: MTEKCO  
Performed: Sun Jun 13 13:33:21 1993

Calibrator Value: 1.0 cps

Background Reading: 0.0 cps  
Calibrator Reading: 1.0 cps

Sensitivity: 1.0000 cps/cps

Temperature Calibration Report

Serial Number: CBLTEMP  
Tool Model: 2.75TEKCONEW  
Performed: Tue Jan 29 07:47:20 2008

	Reference	Reading
Low Reference:	0.00 degF	0.00 usec
High Reference:	1.00 degF	1.00 usec
Gain:	0.33	
Offset:	-30.00	
Delta Spacing:	1	

Segmented Cement Bond Log Calibration Report

Serial Number: CBLTEMP  
Tool Model: 2.75TEKCONEW

Calibration Casing Diameter: 5.500 in  
Calibration Depth: 255.357 ft

Master Calibration, performed Thu Jun 10 16:40:39 2010:

	Raw (v)		Calibrated (mv)		Results	
	Zero	Cal	Zero	Cal	Gain	Offset
3'	0.003	2.024	1.000	71.921	35.096	0.895
CAL						
5'	0.003	2.232	1.000	71.921	31.822	0.902
SUM						
S1						
S2						
S3						
S4						
S5						
S6						
S7						
S8						

Internal Reference Calibration, performed Wed Dec 31 17:00:00 1969:

	Raw (v)		Calibrated (v)		Results	
	Zero	Cal	Zero	Cal	Gain	Offset
CAL						

Air Zero Calibration, performed Wed Dec 31 17:00:00 1969:

	Raw (v)		Calibrated (v)		Results	
	Zero		Zero		Offset	
3'	0.000		0.000		0.000	
5'	0.000		0.000		0.000	
SUM						
S1						
S2						
S3						
S4						
S5						
S6						
S7						
S8						