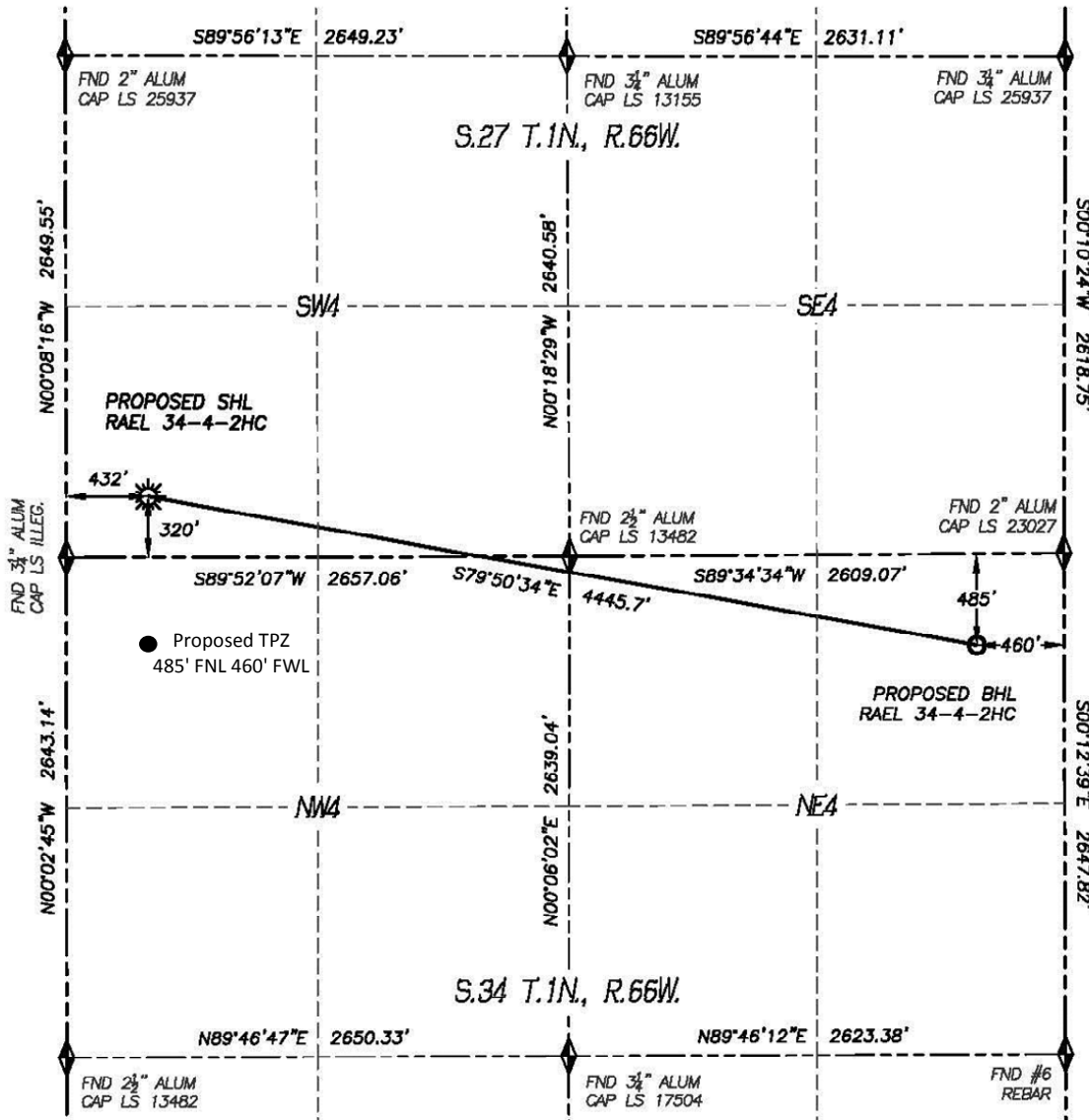


WELL LOCATION CERTIFICATE

RAEL-34-4-2HC

SECTION: 27
TOWNSHIP: 1N
RANGE: 66W



0 500 1000
SCALE: 1" = 1000'

LEGEND

- ◆ FOUND MONUMENT AS DESCRIBED
- ☼ PROPOSED WELL
- EXISTING WELL
- BOTTOM HOLE
- ABANDONED WELL
- ◆ CALCULATED POSITION

IN ACCORDANCE WITH A REQUEST FROM WARD PETROLEUM CORP., DALEY LAND SURVEYING, INC. HAS DETERMINED THE SURFACE LOCATION OF THE RAE 34-4-2HC WELL TO BE 320' FSL, 432' FWL, AS MEASURED AT NINETY (90) DEGREES FROM THE SECTION LINES OF SECTION 27, TOWNSHIP 1 NORTH, RANGE 66 WEST, AND THE BOTTOM HOLE LOCATION TO BE 485' FNL, 460' FWL, AS MEASURED AT NINETY (90) DEGREES FROM THE SECTION LINES OF SECTION 34, TOWNSHIP 1 NORTH, RANGE 66 WEST, OF THE 6TH PRINCIPAL MERIDIAN, WELD COUNTY, COLORADO.

I HEREBY STATE THAT THIS WELL LOCATION CERTIFICATE WAS PREPARED BY ME OR UNDER MY DIRECT SUPERVISION, THAT THE WORK WAS COMPLETED ON 2/8/2016 FOR AND ON BEHALF OF WARD PETROLEUM CORP., AND THAT THIS MAP DOES NOT REPRESENT A BOUNDARY SURVEY, IT IS NOT A LAND SURVEY PLAT OR AN IMPROVEMENT SURVEY PLAT AND IT IS NOT TO BE RELIED UPON FOR THE ESTABLISHMENT OF FENCE, BUILDING OR OTHER FUTURE IMPROVEMENT LINES.

NOTES:

- 1) BEARINGS FOR THIS MAP ARE ASSUMED AND BASED UPON GPS OBSERVATIONS MADE BETWEEN MONUMENTS LOCATED AT THE SOUTHWEST CORNER AND WEST QUARTER CORNER OF SECTION 27, T.1N., R.66W.
- 2) HORIZONTAL DATUM IS NAD83.
- 3) VERTICAL DATUM IS NAVD88 AND ORIGINATES FROM THE LOCAL C.O.R.S. NETWORK, UTILIZING THE GEOID12A MODEL.
- 4) SEE LOCATION DRAWING FOR VISIBLE IMPROVEMENTS WITHIN 500' OF PROPOSED DISTURBED AREA.
- 5) SURFACE USE: PASTURE.
- 6) INST. OPERATOR: TREVOR DALEY.

NEAREST CULTURAL ITEMS:

BUILDING: 749'± SW
BUILDING UNIT: 663'± SW
HIGH OCC. BLD. UNIT: 5280'±
DES. OUTSIDE ACTIVITY AREA: 5280'±
PUBLIC ROAD: 307'± S
ABOVE GROUND UTILITY: 291'± S
RAILROAD: 5280'±
PROPERTY LINE: 320'± S

NAD 83 LATITUDE AND LONGITUDE

SURFACE LOCATION:		BOTTOM HOLE:	
LATITUDE:	N40.01584°	LATITUDE:	N40.01369°
LONGITUDE:	W104.77116°	LONGITUDE:	W104.75554°
ELEV:	5058'	Landing Point (TPZ)	
PDOP:	1.1	485' FNL 460' FWL	
QTR/QTR:	SW4/SW4	(added by Operator 05/31/2016)	



FOR AND ON BEHALF OF
DALEY LAND SURVEYING INC.,
Robert Daley, PLS 35597

SHEET 1 OF 1

Drawing Date: 2/18/16